

PLEASE CHECK WWW.MOLEX.COM FOR LATEST PART INFORMATION

Part Number: [0190080038](#)
Status: **Active**
Description: Flag Krimptite™ Quick Disconnect, Female, for 12-14 (3.30-2.00) Wire, Box, Tab 6.35mm (.250") x 0.81mm (.032")

Documents:

[Drawing \(PDF\)](#) [RoHS Certificate of Compliance \(PDF\)](#)

General

Product Family	Quick Disconnects
Series	19008
Comments	Fits Hermetic Tabs
Crimp Quality Equipment	Yes
Product Name	Krimptite™
Type	Quick Disconnect

Physical

Barrel Type	Closed
Gender	Female
Glow-Wire Compliant	No
Insulation	None
Lock to Mating Part	None
Orientation	Flag
Packaging Type	Bag
Polarized to Mating Part	No
Tab Thickness	0.81mm (.032")
Tab Width	6.35mm (.250")
Temperature Range - Operating	Per Wire Specification
Wire Size AWG	12, 14
Wire Size mm²	2.00 - 3.30

Electrical

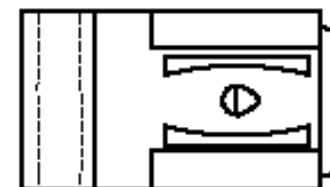
Voltage - Maximum	Per Wire Specification
-------------------	------------------------

Material Info

Old Part Number	B-175
-----------------	-------

Reference - Drawing Numbers

Sales Drawing	SD-19008-009
---------------	--------------



Series

image - Reference only

EU RoHS

ELV and RoHS Compliant

REACH SVHC

Not Reviewed

Halogen-Free

Status

Not Reviewed

China RoHS



Need more information on product environmental compliance?

Email productcompliance@molex.com
 For a multiple part number RoHS Certificate of Compliance, [click here](#)

Please visit the [Contact Us](#) section for any non-product compliance questions.

Search Parts in this Series

[19008Series](#)

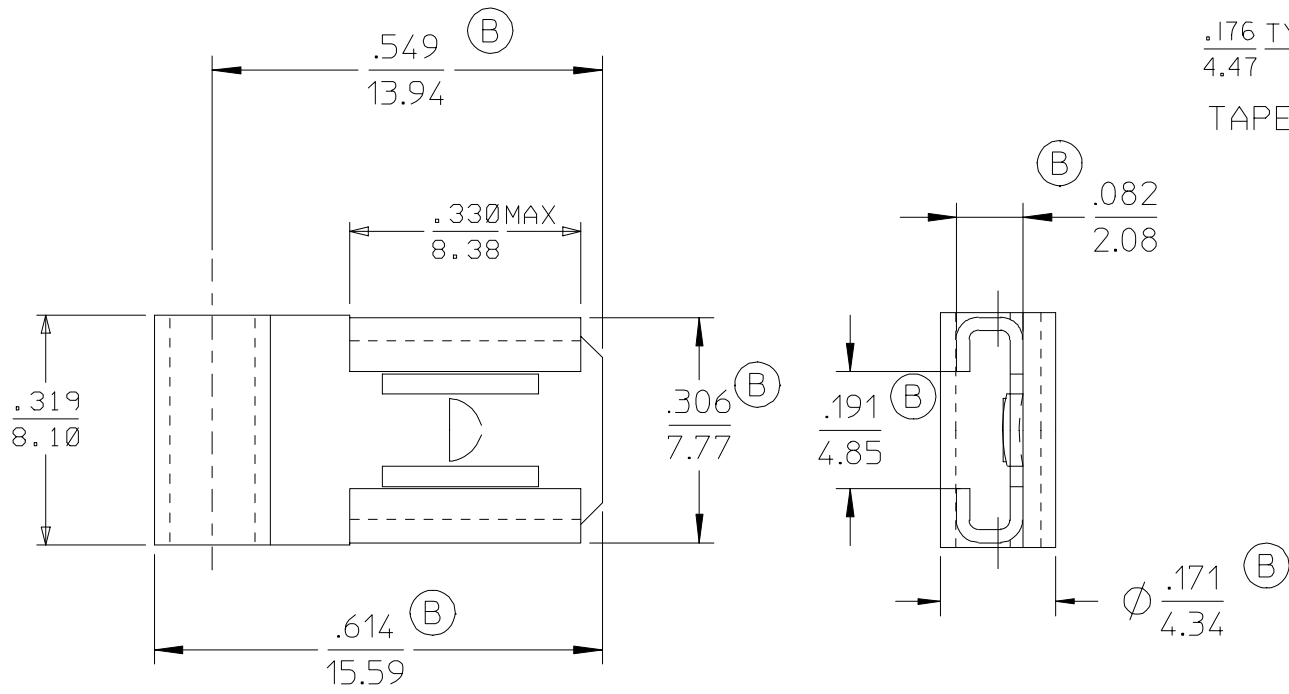
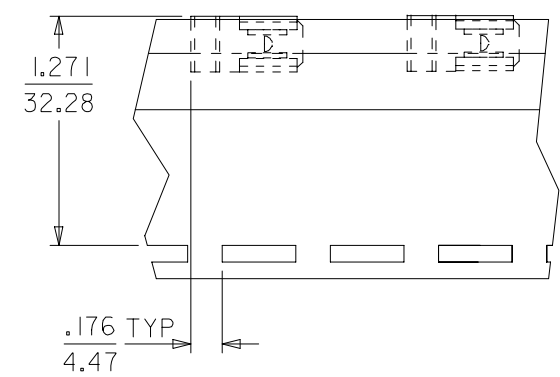
Application Tooling | FAQ

Tooling specifications and manuals are found by selecting the products below. Crimp Height Specifications are then contained in the Application Tooling Specification document.

Global

Description	Product #
Hand Crimp Tool	0640030700

6	5	4	3	2	1
MATERIAL NUMBER	ENGINEERING NUMBER	PLATING	CARRIER		
190080062	B-175P	NON-PLATED	LOOSE PIECE		
190080038	B-175	TIN PLATED	LOOSE PIECE		
190080039	B-175T	TIN PLATED	TAPE		



TAPE MOUNTING LOCATION

SALES DRAWING

- NOTES:
- MATERIAL: BRASS
 - PLATING SEE CHART.
 - RoHS COMPLIANT

CORRECT DIMS EC NO: ETC2007-0146 DRWN: JLOMASTRO 2006/10/11 CHKD: JMACNEIL 2006/10/11 APPR: JMACNEIL 2006/10/12 DESCRIPTION B	QUALITY SYMBOLS ▽=0 ▽=0	GENERAL TOLERANCES (UNLESS SPECIFIED) <table border="1"> <tr> <td></td> <td>mm</td> <td>INCH</td> </tr> <tr> <td>4 PLACES</td> <td>±---</td> <td>±---</td> </tr> <tr> <td>3 PLACES</td> <td>±---</td> <td>±.010</td> </tr> <tr> <td>2 PLACES</td> <td>±0.25</td> <td>±.010</td> </tr> <tr> <td>1 PLACE</td> <td>±0.3</td> <td>±---</td> </tr> </table>		mm	INCH	4 PLACES	±---	±---	3 PLACES	±---	±.010	2 PLACES	±0.25	±.010	1 PLACE	±0.3	±---	DIMENSION STYLE IN/MM DRAWN BY: JLOMASTRO DATE: 10/07/06 CHECKED BY: JMACNEIL DATE: 10/07/06 APPROVED BY: JMACNEIL DATE: 10/07/06	SCALE --- DESIGN UNITS INCH THIRD ANGLE PROJECTION	TITLE FLAG UNINSULATED KRIMPTITE 12-14 AWG MOLEX INCORPORATED DOCUMENT NO. SD-19008-009 SHEET NO. 1 OF 1
		mm	INCH																	
	4 PLACES	±---	±---																	
	3 PLACES	±---	±.010																	
2 PLACES	±0.25	±.010																		
1 PLACE	±0.3	±---																		
DRAFT WHERE APPLICABLE MUST REMAIN WITHIN DIMENSIONS		SEE CHART																		
		THIS DRAWING CONTAINS INFORMATION THAT IS PROPRIETARY TO MOLEX INCORPORATED AND SHOULD NOT BE USED WITHOUT WRITTEN PERMISSION																		