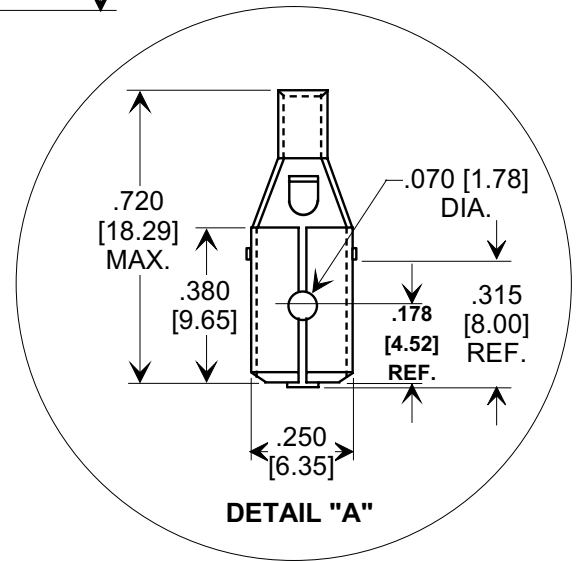
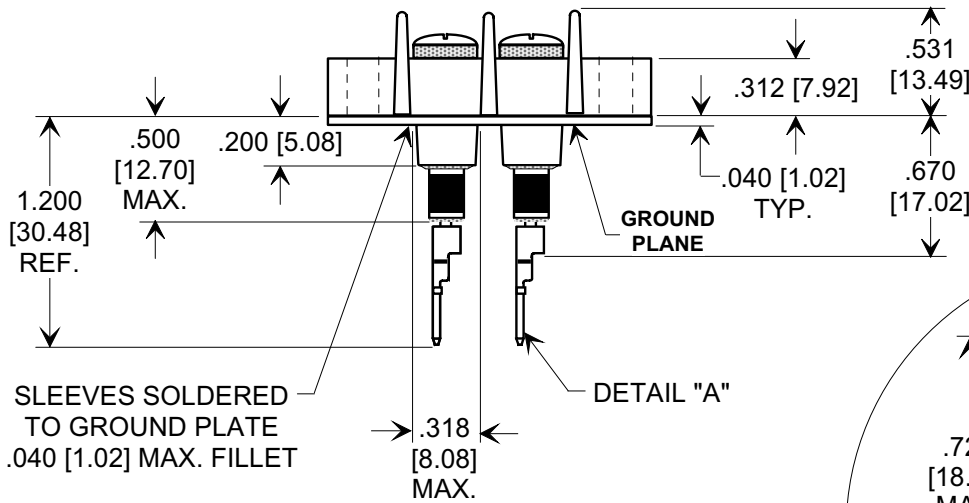
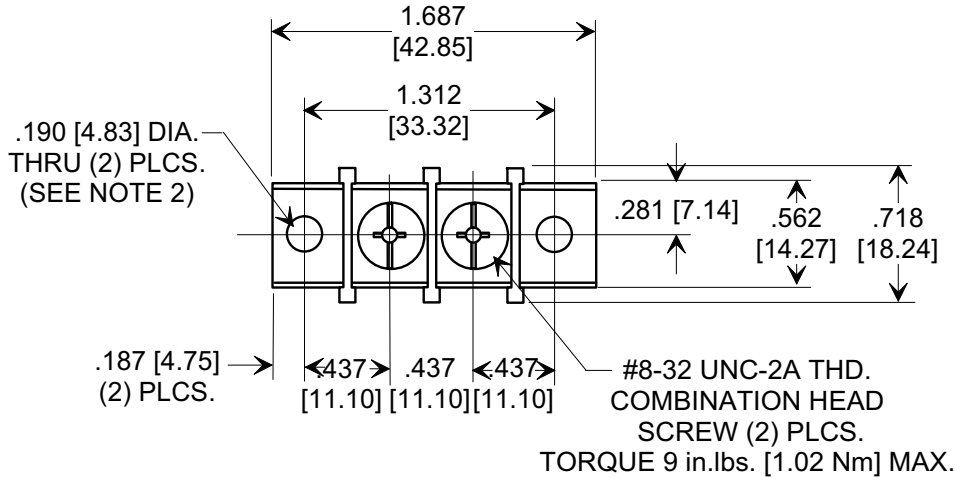
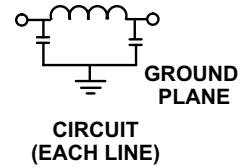
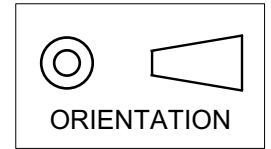


Electrical Testing
per Tusonix standard
test plans and Mil-Std-202
Test Methods.

MARKETING SALES DRAWING

DIMENSIONS IN INCHES - DO NOT SCALE THIS DRAWING
DIMENSIONS IN METRIC - []



- NOTES:
1. MAX. SOLDERING TEMPERATURE 500°F [260°C].
2. BLOCK MOUNTING: RECOMMENDED MOUNTING SCREW (# 8 PAN HEAD) TORQUE 5 in. lbs. [0.56 Nm] MAX.

Cx (pF)	WORKING VOLTAGE -40°C TO +125°C	I _{DC}	I.R. MIN. @ 100 (VDC.)	DWV (VDC)	TYPICAL NO LOAD INSERTION LOSS (dB) @ 25°C PER MIL-STD-220			
					10 MHz	100 MHz	1 GHz	10 GHz
2500/5000	250 VAC	20 Amps	10 G Ω	900	5	50	60	65

REVISION RECORD	0	Original Release	TOLERANCES unless otherwise specified	Title FILTERED TERMINAL BLOCK 2 POSITION	Drawn S.M. 01-06-98	Scale Full
	1	USED NEW SK FORMAT CHG CAP WAS 5000/2500 NR 10-26-98				
	2	WS SK7434-000, RMVD NIT.3, USED NEW FORMAT, RMVD CST. S.GNT. INFO. EC 10-28-98				
	3	19981026-1-02 REVISED DETAIL & ADDED SMALL TAB. S.M. 05-17-99				
	4	19990511-3-11 ADDED METRIC, DWV & I.R. REVISED NOTES. S.M. 06-15-04				
5	20040615-1-02 TITLE REVISED L.E. 06-29-04	20040628-5-02	ANGLES ± N/A	Approved S.C. 01-06-98	A	7602-002
TUSONIX TUCSON, ARIZONA						