

# T1/CEPT/ISDN PRI INTERFACE TRANSFORMER

Turns Ratio ( $\pm 5\%$ )

1:1/1.26\* & 1:1/1.26\*

PARAMETER	MIN.	MAX.	UNITS
OCL (Primary)	1..5		mH
Leakage Inductance		0.4	$\mu$ H
Capacitance ( $C_{w/w}$ )		45	pF
Primary DC Resistance		0.8	ohms
Secondary DC Resistance		1.0	ohms
ET Product	10		$V\mu$ S

Flammability: Materials used in the production of these units meet requirements of UL94-VO and IEC 695-2-2 needle flame test.

1500  $V_{RMS}$  Isolation (Hi-Pot)

Parts shipped in anti-static tubes. 29 pieces per tube

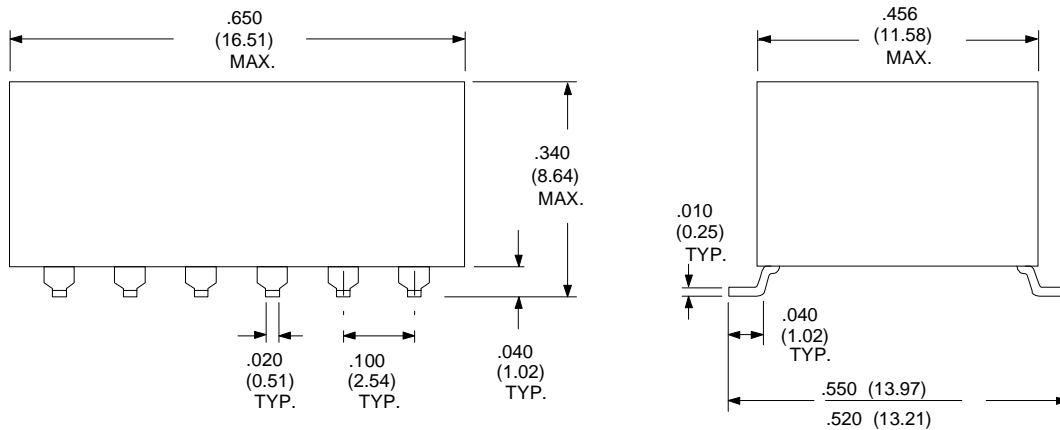
Tape and Reel available.

## Primary Pins 12-10 & 9-7

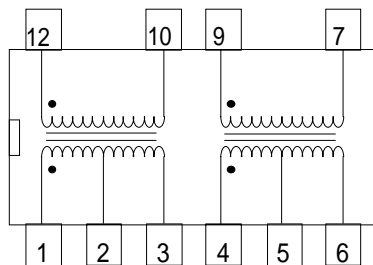
\*Pins 2-3 for 1:1, Pins 1-3 for 1:1.26

Pins 5-6 for 1:1, Pins 4-6 for 1:1.26

## PHYSICAL DIMENSIONS All dimensions in inches (mm):



## SCHEMATIC DIAGRAM:



RHOMBUS P/N: **T-14419**

CUST P/N:

NAME:

DATE: **2/23/98**

SHEET: 1 OF 1