

NOTES: UNLESS OTHERWISE SPECIFIED

1. MATERIAL SPECIFICATIONS:

BODYS & NUT: BRASS PER ASTM B16.
 CONTACT: COPPER ALLOY.
 INSULATOR: TEFLON PER ASTM D1710.
 BOARD LOCKS: PHOSPHOR BRONZE PER ASTM B139.
 INSULATOR: LCP PER ZENITE 6130LX BK010

2. FINISH SPECIFICATIONS:

CONTACT: .000030 MIN GOLD PER ASTM B488 OVER .000080 MIN NICKEL PER AMS-QQ-N-290.
 NUT : .000100 MIN NICKEL PER AMS-QQ-N-290 OVER COPPER FLASH PER ASTM B734.
 FRONT BODY: .000015 MIN GOLD PER ASTM B488 OVER .000080 MIN NICKEL PER AMS-QQ-N-290.
 REAR BODY AND BOARD LOCKS: .000050 MIN PURE TIN OVER .000080 MIN NICKEL PER AMS-QQ-N-290.

3. ELECTRICAL SPECIFICATIONS:

IMPEDANCE: 75 OHMS.
 FREQUENCY RANGE: DC-4.5GHz.
 RETURN LOSS (ON MID-LAYER OF 1.6mm PCB): <-15dB UP TO 3.0GHz, <-10dB UP TO 4.5 GHz.

4. COMPLIANT TO SMPTE 424M (3G-SDI) STANDARD.

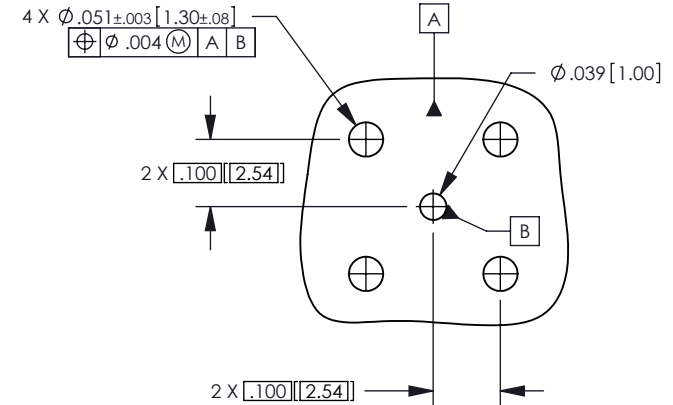
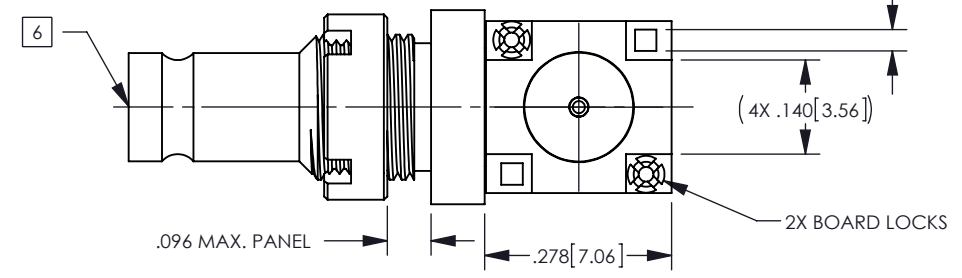
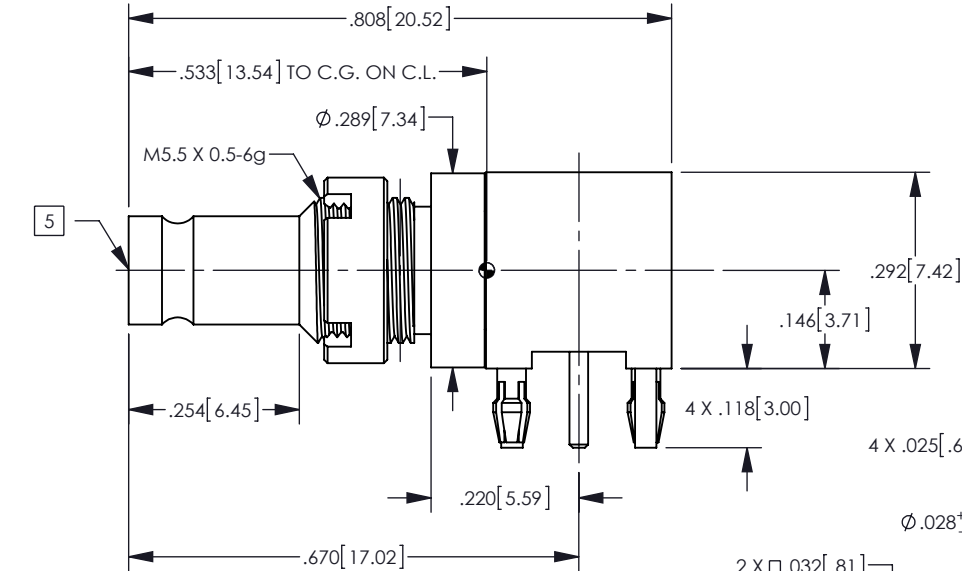
5 TIP MISALIGNMENT: .026[0.66] HORIZONTAL
 .005[0.13] VERTICAL

6 STUB RESISTANT INTERFACE

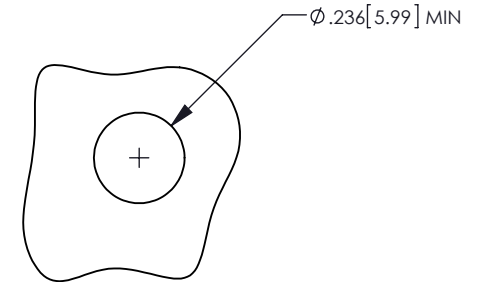
7. LEAD FREE SOLDER 260°C FOR 90 SECONDS.

P/N	DESCRIPTION	QTY
034B-060-00402H	TRAY PACK	360
034B-060-00402HU	TAPE & REEL PACK	350

REV	DESCRIPTION	BY DATE	APPD
B	REVISED PER ERO42473 CHANGE T & R QTY FROM 500 TO 350. CE MATERIAL UPDATED TO LCP. ADD LEAD FREE NOTE	06/19/12 CV	LL



RECOMMENDED PCB LAYOUT
 .063 [1.6] THICKNESS



RECOMMENDED PANEL
 MOUNTING HOLE

CATALOG P/N: 034B-060-00402H

PER ASME Y14.5M-1994 UNLESS OTHERWISE SPECIFIED: DIMENSIONS ARE IN INCHES [MM] TOLERANCES: DECIMAL: .XX [X.X] ± .01 [0.3] .XXX [X.XX] ± .005 [0.13] .XXXX [X.XXX] ± .XXXX ANGLES: ± 2° SCALE: 3.5:1				KINGS by WINCHESTER ELECTRONICS Winchester Electronics Corporation 62 Barnes Industrial Road North Wallingford, Connecticut 06492	
CUSTOMER DRAWING THIRD ANGLE			DIN 1.0/2.3 75 OHM JACK RIGHT ANGLE PCB MOUNT WITH BOARD LOCKS & STUB RESISTANT INTERFACE (RoHS)		
DRAWN DCam	DATE 10/07/11	APPROVED J.B	DATE 12/09/11	SHT 1	OF 1
APPROVED XXX	DATE XX/XX/XX	APPROVED XXX	DATE XX/XX/XX	REV A	REV B
SD034B-060-00402H					