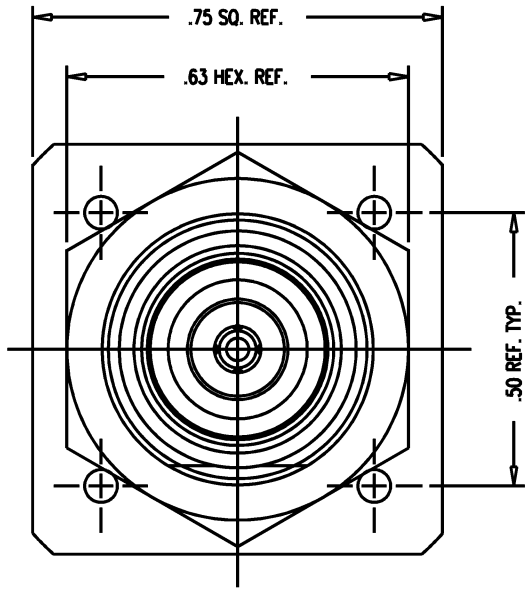
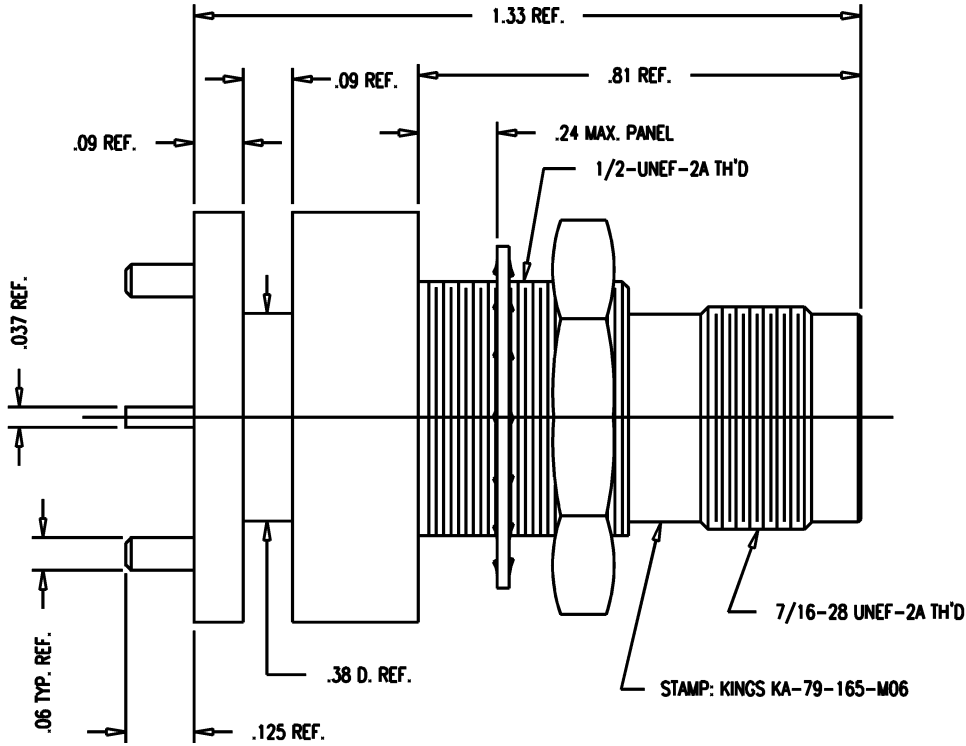
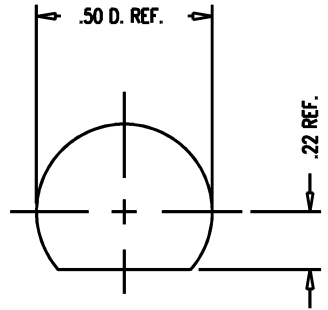


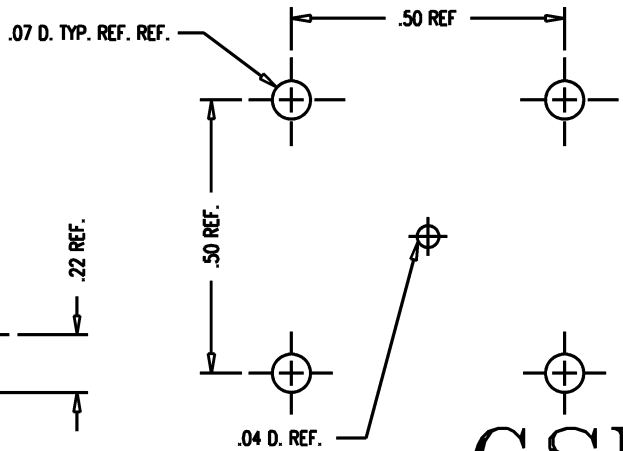
GSD



- NOTES:
- INTERFACE PER MIL-STD-348, 313-2.
 - MATERIALS:
 INSULATOR-TEFLON, ASTM-D-4894
 CENTER CONTACT-BER. COP., ASTM-B-196
 LOCKWASHER-PHOSPHOR BRONZE, QQ-B-750
 ALL OTHER METAL PARTS-BRASS, ASTM-B16
 - FINISHES:
 CENTER CONTACT-GOLD PLATE PER MIL-G-45204
 ALL OTHER METAL PARTS-KINGS TARNISH RESISTANT NICKEL FINISH (TR-5)
 - ELECTRIAL CHARACTERISTICS:
 NOMINAL IMPEDANCE-50 OHMS
 FREQUENCY RANGE-DC TO 11 GHZ
 WORKING VOLTAGE-500 VRMS



MOUNTING HOLE



MOUNTING PATTERN

GSD

KA-79-165-M06

REVISIONS	
ISSUE	CHANGES
6	CN 35361 D REDRAWN KH 07/11/94
7	CN 36639 C KH 11/09/95

SCALE 4:1	
APPROX SURFACE AREA	
WAS: E-9843	
USED ON	
REF: DIGITAL DWG. #1217979-0-0 REV. A	
RECEPTACLE, PCB, TNC	
DRAWN KH	08/04/91
DESIGN MJB	08/04/91
APPR.	DATE
KINGS ELECTRONICS CO., INC. TUCKAHOE, NEW YORK 10707	
KA-79-165-M06	

KAM0936