

New Jersey Semi-Conductor Products, Inc.

20 STERN AVE.
 SPRINGFIELD, NEW JERSEY 07081
 U.S.A.

TELEPHONE: (201) 376-2922
 (212) 227-6005
 FAX: (201) 376-8960

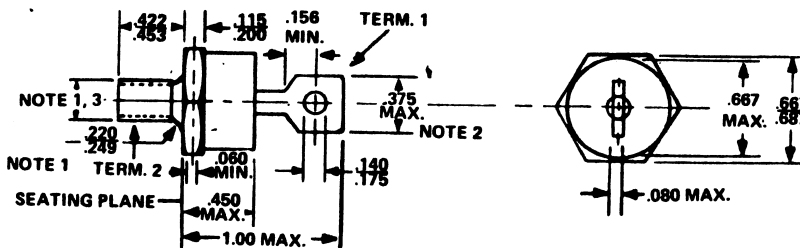
D.A.T.A. /P/A/L/ (v4.2)

1 of 3822

Ref/Reg Diodes, 10W < P(D)

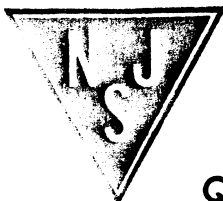
Part Number: 1N4549A
 Description: Ref/Reg Diodes, 10W < P(D)
 Manufacturer..... many
 Mil/High-Rel? (Y/N).....
 Nom. Ref. Volt..... 3.9
 Test Current..... 3.2
 Tol. (%)..... 10
 PD Max. (W)..... 50
 Dyn. Zmax (Ω)..... 160m
 Temp Coef pp/10k.....
 Oper. Temp (°C) Max..... 175|
 Pkg Style..... StR-1/4
 Surface Mounted (Y/N)..... N

D05



NOTES:

1. COMPLETE THREADS TO EXTEND TO WITHIN 2-1/2 THREADS OF SEATING PLANE.
2. ANGULAR ORIENTATION OF THIS TERMINAL IS UNDEFINED.
3. 1/4-28 UNF-2A. MAXIMUM PITCH DIAMETER OF PLATED THREADS SHALL BE BASIC PITCH DIAMETER (.2268", 5.74 MM) REF. (SCREW THREAD STANDARDS FOR FEDERAL SERVICES 1957) HANDBOOK H28 1957 P1.
4. MINIMUM FLAT.



Quality Semi-Conductors