

POWER LINE CHOKES COMMON MODE CHOKES

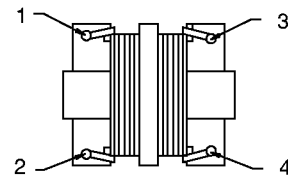
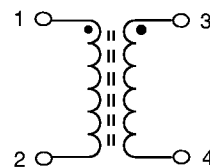
Power line chokes can be used to minimize EMI radiated noise in the common mode on all power applications. Bel offers a variety of inductances and rated currents, to provide full coverage of power requirements.

- * 2000 Volts AC for 60 seconds Isolation Voltage.
- * 250 Volts AC/DC rated voltage.
- * Insulation Resistance is 100 Mohms minimum at 500 VDC.

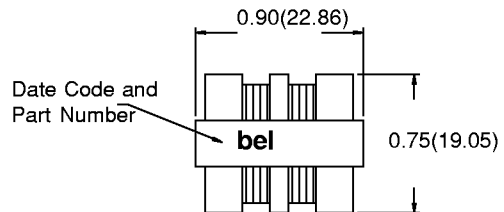
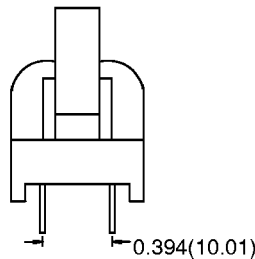
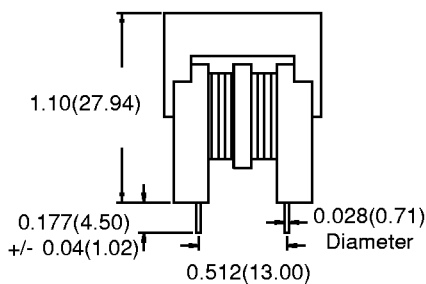
ELECTRICALS @ 25° C

Part Number	Rated Current I/Line	Inductance OCL (mH) Min	DCR (ohm/line) Max
0571-0303-00	0.40	30.0	2.80
0571-0203-00	0.40	20.0	2.20
0571-0203-01	0.50	20.0	1.60
0571-0103-00	0.60	10.0	1.20
0571-0083-00	0.80	8.00	0.80
0571-0063-00	0.80	6.00	0.70
0571-0063-01	1.00	6.00	0.50
0571-0043-00	1.00	4.00	0.40
0571-0033-00	0.75	3.00	1.00
0571-0033-01	1.20	3.00	0.40
0571-0023-00	1.20	2.00	0.30
0571-0013-00	1.50	1.50	0.30

SCHEMATIC



MECHANICALS



Dimensions are in inches(mm)
Dimension tolerance is equal to
+/- 0.02(0.51) unless otherwise stated.

Corporate Office
Bel Fuse Inc.
198 Van Vorst Street, Jersey City, NJ 07302-4496
Tel: 201-432-0463
Fax: 201-432-9542
E-Mail: BelFuse@belfuse.com
Internet: <http://www.belfuse.com>

Far East Office
Bel Fuse Ltd.
8F/8 Luk Hop Street
San Po Kong
Kowloon, Hong Kong
Tel: 852-2328-5515
Fax: 852-2352-3706

European Office
Bel Fuse Europe Ltd.
Preston Technology Management Centre
Marsh Lane, Preston PR1 8UD
Lancashire, U.K.
Tel: 44-1772-556601
Fax: 44-1772-888366