

**PRELIMINARY**

Notice: This is not a final specification.  
Some parametric limits are subject to change.

# MITSUBISHI HVIGBT MODULES CM600E2Y-34H

HIGH POWER SWITCHING USE  
INSULATED TYPE

HVIGBT (High Voltage Insulated Gate Bipolar Transistor) Modules

## CM600E2Y-34H

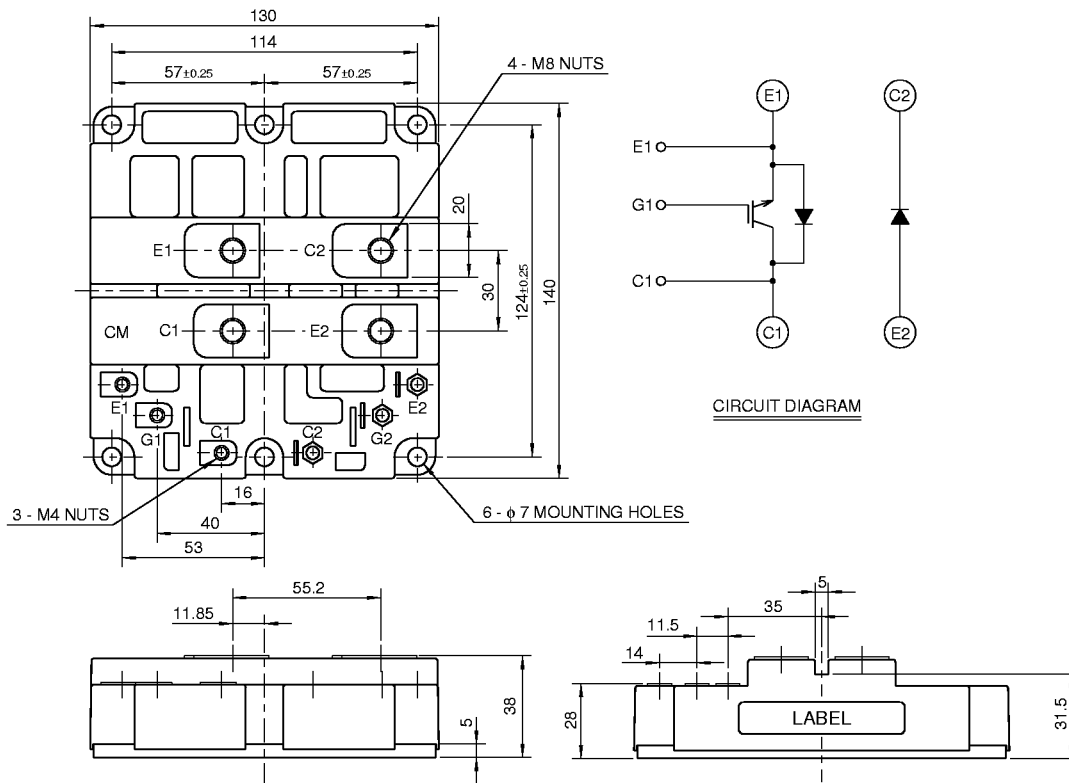
- Ic ..... 600A
- VCES ..... 1700V
- Insulated Type
- 1-elements in a pack (for brake)

## APPLICATION

DC choppers, Dynamic braking choppers.

## OUTLINE DRAWING & CIRCUIT DIAGRAM

Dimensions in mm



HVIGBT MODULES (High Voltage Insulated Gate Bipolar Transistor Modules)

Feb.1999

**PRELIMINARY**  
 Notice: This is not a final specification.  
 Some parametric limits are subject to change.

**CM600E2Y-34H**

**HIGH POWER SWITCHING USE  
 INSULATED TYPE**

HVIGBT (High Voltage Insulated Gate Bipolar Transistor) Modules

**MAXIMUM RATINGS (T<sub>J</sub> = 25°C)**

Symbol	Parameter	Conditions	Ratings	Unit
V <sub>CE</sub> S	Collector-emitter voltage	G-E Short	1700	V
V <sub>GE</sub> S	Gate-emitter voltage	C-E Short	±20	V
I <sub>C</sub>	Collector current	T <sub>C</sub> = 25°C	600	A
I <sub>CM</sub>		Pulse (Note 2)	1200	A
I <sub>E</sub> (Note 1)	Emitter current	T <sub>C</sub> = 25°C	600	A
I <sub>EM</sub> (Note 1)		Pulse (Note 2)	1200	A
P <sub>C</sub> (Note 3)	Maximum collector dissipation	T <sub>C</sub> = 25°C	6250	W
T <sub>J</sub>	Junction temperature		-40 ~ +150	°C
T <sub>stg</sub>	Storage temperature		-40 ~ +125	°C
V <sub>iso</sub>	Isolation voltage	Main terminal to Base, AC for 1 minute	4000	V
—	Mounting torque	Main terminals screw M8	6.67 ~ 13.00	N·m
		Mounting screw M6	2.84 ~ 6.00	N·m
		Auxiliary terminals screw M4	0.88 ~ 2.00	N·m
—	Weight	Typical value	1.5	kg

**ELECTRICAL CHARACTERISTICS (T<sub>J</sub> = 25°C)**

Symbol	Parameter	Test conditions	Limits			Unit
			Min	Typ	Max	
I <sub>CE</sub> S	Collector cutoff current	V <sub>CE</sub> = V <sub>CE</sub> S, V <sub>GE</sub> = 0V	—	—	15	mA
V <sub>GE(th)</sub>	Gate-emitter threshold voltage	I <sub>C</sub> = 60mA, V <sub>CE</sub> = 10V	4.5	6.0	7.5	V
I <sub>GE</sub> S	Gate-leakage current	V <sub>GE</sub> = V <sub>GE</sub> S, V <sub>CE</sub> = 0V	—	—	0.5	μA
V <sub>CE(sat)</sub>	Collector-emitter saturation voltage	T <sub>J</sub> = 25°C	—	2.75	3.58	V
		T <sub>J</sub> = 125°C	—	3.30	—	
C <sub>ies</sub>	Input capacitance	V <sub>CE</sub> = 10V V <sub>GE</sub> = 0V	—	70	—	nF
C <sub>oes</sub>	Output capacitance		—	10.0	—	nF
C <sub>res</sub>	Reverse transfer capacitance		—	3.8	—	nF
Q <sub>G</sub>	Total gate charge	V <sub>CC</sub> = 850V, I <sub>C</sub> = 600A, V <sub>GE</sub> = 15V	—	6	—	μC
t <sub>d(on)</sub>	Turn-on delay time	V <sub>CC</sub> = 850V, I <sub>C</sub> = 600A	—	—	1.20	μs
t <sub>r</sub>	Turn-on rise time	V <sub>GE1</sub> = V <sub>GE2</sub> = 15V	—	—	1.50	μs
t <sub>d(off)</sub>	Turn-off delay time	R <sub>G</sub> = 3.3Ω	—	—	2.00	μs
t <sub>f</sub>	Turn-off fall time	Resistive load switching operation	—	—	0.60	μs
V <sub>EC</sub> (Note 1)	Emitter-collector voltage	I <sub>E</sub> = 600A, V <sub>GE</sub> = 0V	—	2.40	3.12	V
t <sub>rr</sub> (Note 1)	Reverse recovery time	I <sub>E</sub> = 600A	—	—	2.00	μs
Q <sub>rr</sub> (Note 1)	Reverse recovery charge	die / dt = -1200A / μs	—	100	—	μC
R <sub>th(j-c)Q</sub>	Thermal resistance	IGBT part	—	—	0.020	°C/W
R <sub>th(j-c)R</sub>		FWDI part	—	—	0.064	°C/W
R <sub>th(c-f)</sub>	Contact thermal resistance	Case to fin, conductive grease applied (Per 1/2 module)	—	0.016	—	°C/W
V <sub>FM</sub>	Forward voltage	I <sub>F</sub> = 600A, Clamp diode part	—	2.60	3.38	V
t <sub>rr</sub>	Reverse recovery time	I <sub>F</sub> = 600A	—	—	2.00	μs
Q <sub>rr</sub>	Reverse recovery charge	di <sub>F</sub> / dt = -1200A / μs, Clamp diode part	—	100	—	μC
R <sub>th(j-c)</sub>	Thermal resistance	Clamp diode part	—	—	0.064	°C/W
R <sub>th(c-f)</sub>	Contact thermal resistance	Case to fin, conductive grease applied (Per 1/2 module)	—	0.016	—	°C/W

- Note 1. I<sub>E</sub>, V<sub>EC</sub>, t<sub>rr</sub>, Q<sub>rr</sub> & die/dt represent characteristics of the anti-parallel, emitter to collector free-wheel diode.  
 2. Pulse width and repetition rate should be such that the device junction temp. (T<sub>J</sub>) does not exceed T<sub>Jmax</sub> rating.  
 3. Junction temperature (T<sub>J</sub>) should not increase beyond 150°C.  
 4. Pulse width and repetition rate should be such as to cause negligible temperature rise.

