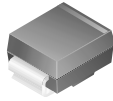
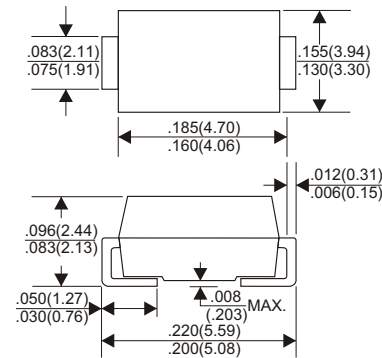


RoHS Compliant Product

A suffix of "-C" specifies halogen-free



DO-214AA(SMB)



Dimensions in inches and (millimeters)

FEATURES

- * Ideal for surface mount applications
- * Easy pick and place
- * Built-in strain relief
- * Fast switching speed

MECHANICAL DATA

- * Case: Molded plastic
- * Epoxy: UL 94V-0 rate flame retardant
- * Metallurgically bonded construction
- * Polarity: Color band denotes cathode end
- * Mounting position: Any
- * Weight: 1.02 grams

MAXIMUM RATINGS AND ELECTRICAL CHARACTERISTICS

Rating 25°C ambient temperature unless otherwise specified.
Single phase half wave, 60Hz, resistive or inductive load.
For capacitive load, derate current by 20%.

TYPE NUMBER	SEF201B	SEF202B	SEF203B	SEF204B	SEF205B	SEF206B	UNITS
Maximum Recurrent Peak Reverse Voltage	50	100	200	400	600	800	V
Maximum RMS Voltage	35	70	140	280	420	560	V
Maximum DC Blocking Voltage	50	100	200	400	600	800	V
Maximum Average Forward Rectified Current .375"(9.5mm) Lead Length at Ta=55°C	2.0						A
Peak Forward Surge Current, 8.3 ms single half sine-wave superimposed on rated load (JEDEC method)	50						A
Maximum Instantaneous Forward Voltage at 2.0A	0.98		1.3		1.5	1.7	V
Maximum DC Reverse Current Ta=25°C	5.0						µA
at Rated DC Blocking Voltage Ta=100°C	100						µA
Maximum Reverse Recovery Time (Note 1)	50					70	nS
Typical Junction Capacitance (Note 2)	15						pF
Thermal Resistance, Junction to Lead (Note 3)	18						°C/W
Thermal Resistance, Junction to Ambient (Note 3)	55						°C/W
Operating and Storage Temperature Range T _J , T _{STG}	-65 ~ +150						°C

NOTES:

1. Reverse Recovery Time test condition: IF=0.5A, IR=1.0A, IRR=0.25A
2. Measured at 1MHz and applied reverse voltage of 4.0V D.C.
3. Rating applies when surface mounted on the minimum pad size recommended, PC Board with 7.0 X 7.0mm copper pad.

RATING AND CHARACTERISTIC CURVES (SEF201B THRU SEF206B)

FIG.1-TYPICAL FORWARD CHARACTERISTICS

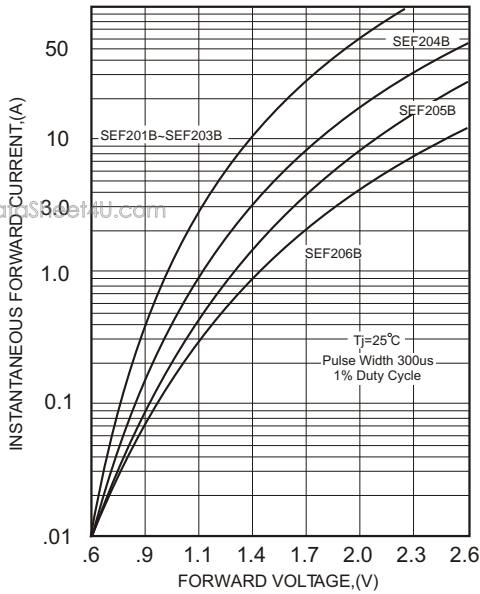


FIG.2-TYPICAL FORWARD CURRENT DERATING CURVE

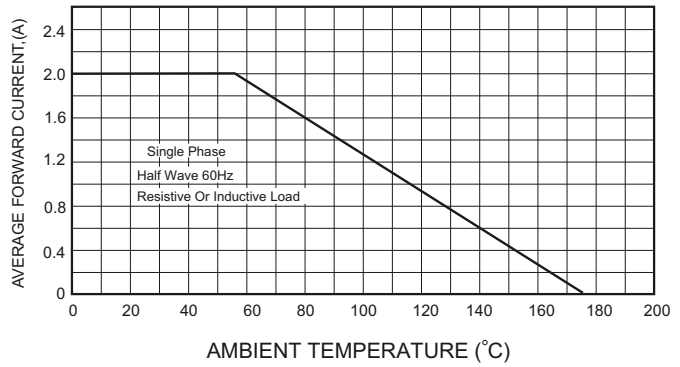


FIG.4-MAXIMUM NON-REPETITIVE FORWARD SURGE CURRENT

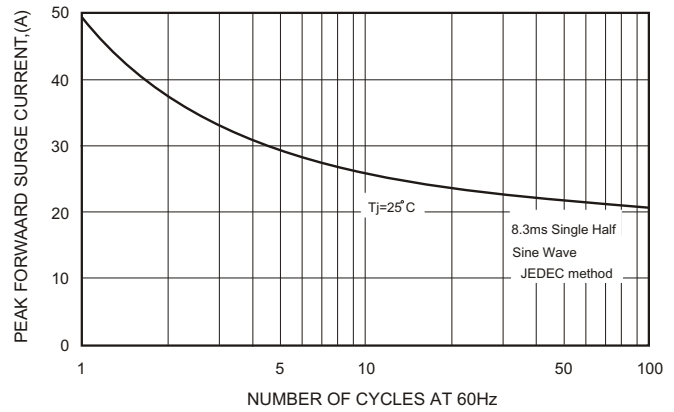
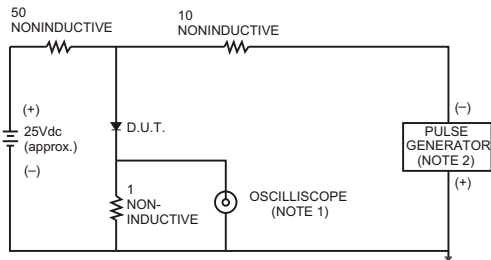


FIG.3- TEST CIRCUIT DIAGRAM AND REVERSE RECOVERY TIME CHARACTERISTICS



NOTES: 1. Rise Time= 7ns max., Input Impedance= 1 megohm.22pF.
2. Rise Time= 10ns max., Source Impedance= 50 ohms.

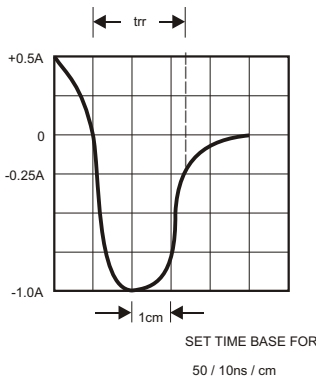


FIG.5-TYPICAL JUNCTION CAPACITANCE

