

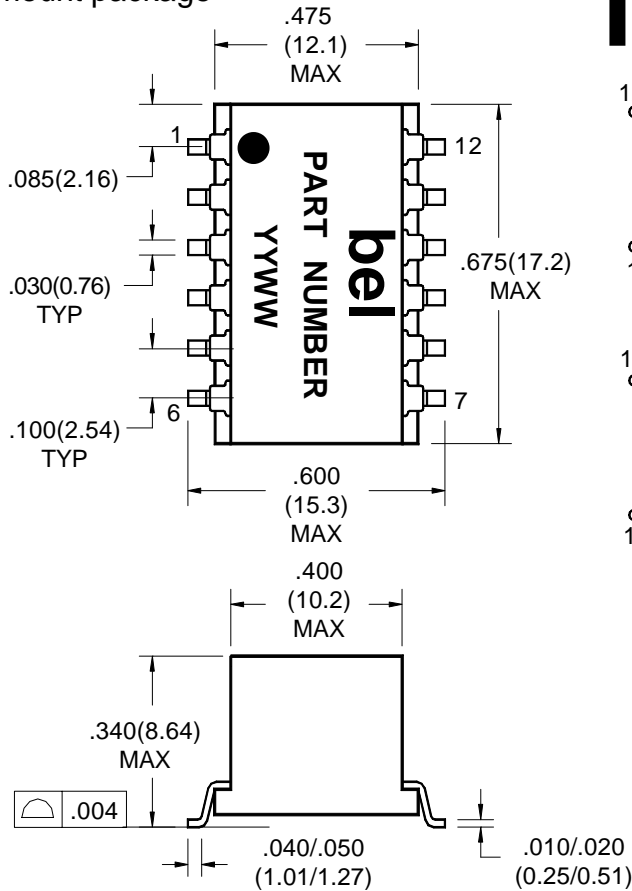


defining a degree of excellence

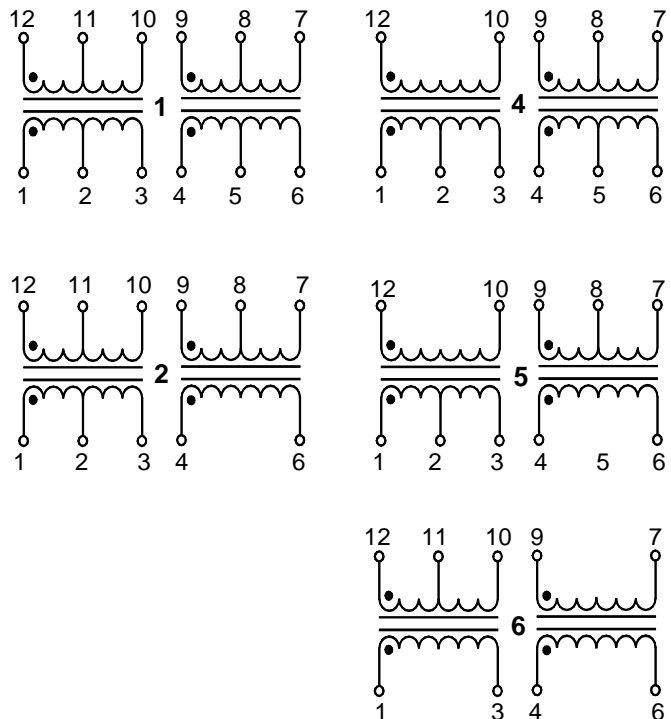
T1/CEPT/ISDN-PRI TRANSFORMERS DUAL SURFACE MOUNT

TM0002

Bel introduces a new ISDN TI/CEPT/ISDN-PRI Transformer in a surface mount package



Dual surface mount package contains both transmit and receive transformers.
Models matched to leading transceiver chips.
Provide 1500 Vrms Isolation.



ELECTRICALS SPECIFICATIONS @ 25°C

* Extended Temp. Range Models

Part Number	Turns Ratio (pri:sec +/-5%)	OCL 25° C (mH min)	Cw/w (pf max)	L _L (uH max)	DRC PRI (ohms max)	DRC SEC (ohms max)	Sch	Primary Pins
S553-6500-03	1ct:1ct & 1ct:1ct	1.2 & 1.2	50 & 50	0.8 & 0.8	1.0 & 1.0	1.0 & 1.0	1	12-10,4-6
S553-6500-05	1ct:2ct & 1ct:2ct	1.2 & 1.2	50 & 50	0.8 & 0.8	1.0 & 1.0	1.7 & 1.7	1	12-10,4-6
S553-6500-06	1ct:2ct & 1:1.36ct	1.6 & 1.6	60 & 50	1.0 & 0.8	1.5 & 1.5	2.0 & 1.7	2	12-10,4-6
S553-6500-07	1:1.15ct & 1ct:2ct	1.5 & 1.2	60 & 50	0.8 & 0.8	1.0 & 1.0	1.0 & 1.7	4	12-10,4-6
S553-6500-08	1:1:1.266 & 1:2ct	1.5 & 1.2	50 & 60	0.8 & 0.8	1.0 & 1.0	1.1 & 1.7	5	12-10,4-6
S553-6500-09	2:2ct & 2:1	1.6 & 1.6	50 & 40	1.3 & 1.3	1.1 & 1.1	1.1 & 0.7	6	1-3,4-6

At -40 degree C, OCL is 600 uH min. for all low temp. models with the exception of S553-6500-09 which is 800 uH min.. All other parameters are specified at +25 degree C only.

*Extended temp. range is -40°C to +85°C

Corporate Office

Bel Fuse Inc.
198 Van Vorst Street, Jersey City, NJ 07302-4496
Tel: 201-432-0463
Fax: 201-432-9542
E-Mail: BelFuse@belfuse.com
Internet: http://www.belfuse.com

Far East Office

Bel Fuse Ltd.
8F/8 Luk Hop Street
San Po Kong
Kowloon, Hong Kong
Tel: 852-2328-5515
Fax: 852-2352-3706

European Office

Bel Fuse Europe Ltd.
Preston Technology Management Centre
Marsh Lane, Preston PR1 8UD
Lancashire, U.K.
Tel: 44-1772-556601
Fax: 44-1772-888366