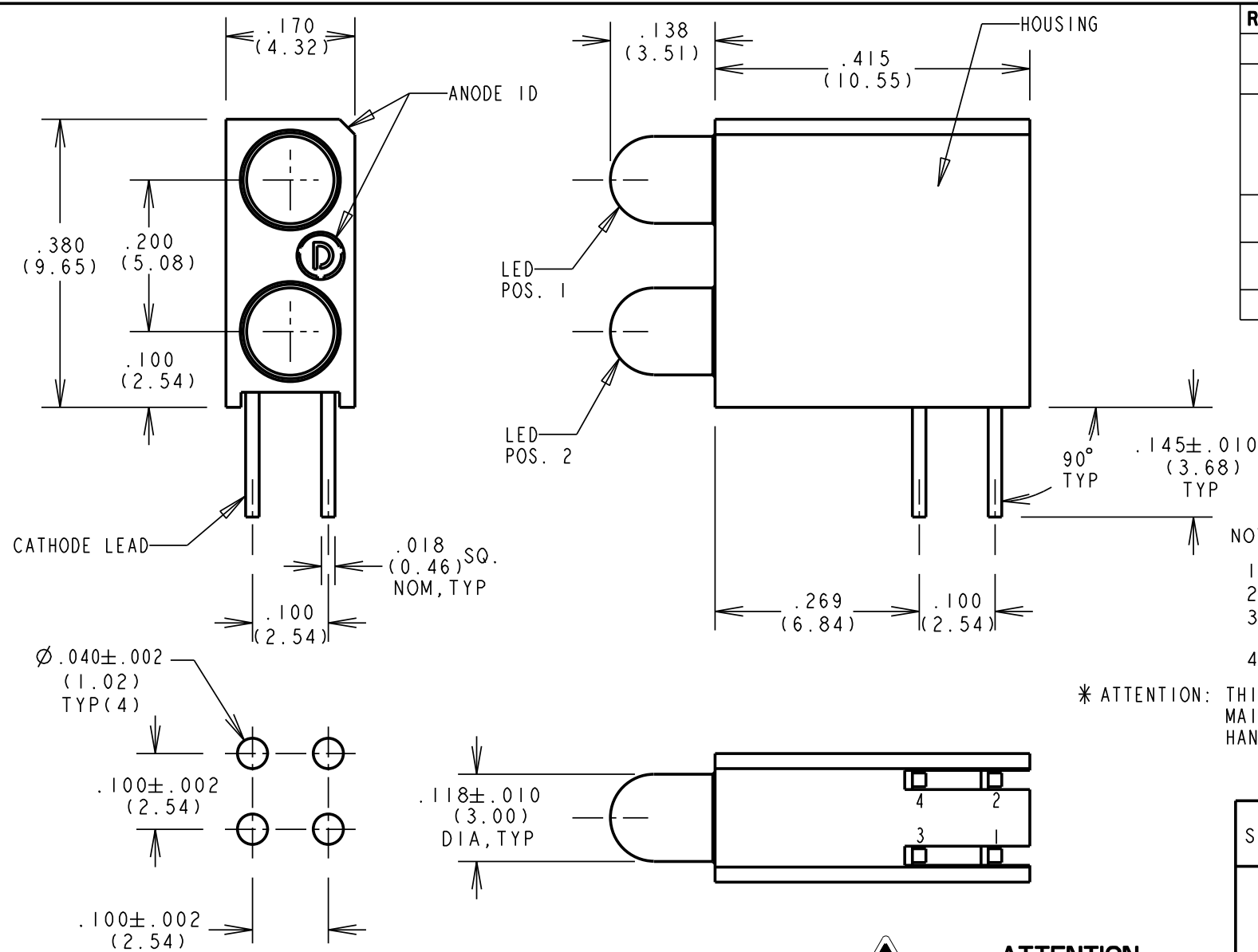
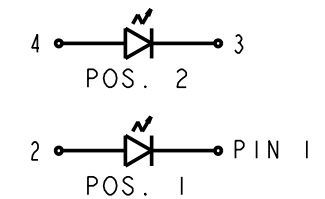


| PART NUMBER | LED COLOR(DIFFUSED) | |
|----------------|---------------------|------------|
| | POSITION 1 | POSITION 2 |
| 553-0101-200 | BLANK | RED |
| 553-0102-200 | BLANK | GREEN |
| 553-0103-200 | BLANK | YELLOW |
| 553-0110-200 | RED | BLANK |
| 553-0111-200 | RED | RED |
| 553-0112-200 | RED | GREEN |
| 553-0113-200 | RED | YELLOW |
| 553-0120-200 | GREEN | BLANK |
| 553-0121-200 | GREEN | RED |
| 553-0122-200 | GREEN | GREEN |
| 553-0123-200 | GREEN | YELLOW |
| * 553-0128-200 | GREEN | BLUE |
| 553-0130-200 | YELLOW | BLANK |
| 553-0131-200 | YELLOW | RED |
| 553-0132-200 | YELLOW | GREEN |
| 553-0133-200 | YELLOW | YELLOW |
| * 553-0188-200 | BLUE | BLUE |
| 553-0201-200 | BLANK | RED |
| 553-0202-200 | BLANK | GREEN |
| 553-0203-200 | BLANK | YELLOW |
| 553-0210-200 | RED | BLANK |
| 553-0211-200 | RED | RED |
| 553-0212-200 | RED | GREEN |
| 553-0213-200 | RED | YELLOW |
| 553-0220-200 | GREEN | BLANK |
| 553-0222-200 | GREEN | GREEN |
| 553-0232-200 | YELLOW | GREEN |
| 553-0233-200 | YELLOW | YELLOW |
| 553-0311-200 | RED | RED |
| 553-0322-200 | GREEN | GREEN |
| 553-0333-200 | YELLOW | YELLOW |



| REV | ECN NO | REVISIONS | DRN | CKD | APP | DATE |
|-----|--------|---|-----|------|------|----------|
| A | | NEW RELEASE | YY | -- | N.O. | 9-9-93 |
| B | | ADDED 25 NEW PART NUMBERS. | YY | -- | N.O. | 5-25-94 |
| C | | REVISED RED, YELLOW & GREEN LED SPECS.; ADDED NOTE 4; .118 WAS .115, 3.00 WAS 2.92; ADDED LOW CURRENT AND 5 VOLT INTEGRAL RESISTOR LED SPECS. | TC | D.C. | N.O. | 6-28-99 |
| D | | ADDED P/N 553-0188-200, LED SPECS. AND "ATTENTION" NOTE. | TC | D.C. | N.O. | 10-18-99 |
| E | | REVISED 2 mA & 5 V RED, GRN AND YELLOW LED SPECS. | TC | D.C. | N.O. | 9-18-00 |
| F | | ADDED 553-0128-200 | JMC | | | |



NOTES:

- MILLIMETER DIMENSIONS SHOWN FOR REFERENCE ONLY.
- LEADS TO FIT INTO HOLES SPACED AS PER PATTERN.
- PIN NUMBERS FOR REFERENCE ONLY, DESIGNATION NON-EXISTENT ON PART.
- DIALIGHT PART NUMBER: 553-0XXX-200.

* ATTENTION: THIS ASSEMBLY CONTAINS ELECTROSTATIC SENSITIVE DEVICES(ESDS). MAINTAIN ALL PRECAUTIONARY MEASURES DURING ASSEMBLY, HANDLING AND STORAGE IN ACCORDANCE WITH IPC-A-610.

OPERATING CHARACTERISTICS AT $T_A = 25^\circ\text{C}$

| SYMBOL | PARAMETER | COLOR | MIN | TYP | MAX | UNITS | TEST COND. |
|----------------|--------------------|--------|-----|------|-----|-------|-------------------------|
| V_F | FORWARD VOLTAGE | RED | | 2.0 | 2.8 | V | $I_F = 10 \text{ mA}$ |
| | | YELLOW | | 2.1 | 2.8 | | |
| | | GREEN | | 2.1 | 2.8 | | |
| | | BLUE | | 3.5 | 4.2 | | |
| V_R | REVERSE VOLTAGE | ALL | 5.0 | | | V | $I_R = 100 \mu\text{A}$ |
| λ_{PK} | PEAK WAVELENGTH | RED | | 635 | | nm | MEASURED AT PEAK |
| | | YELLOW | | 585 | | | |
| | | GREEN | | 565 | | | |
| | | BLUE | | 428 | | | |
| I_V | LUMINOUS INTENSITY | RED | 7.4 | 10.0 | | mcd | $I_F = 20 \text{ mA}$ |
| | | YELLOW | 7.4 | 10.0 | | | |
| | | GREEN | 4.7 | 12.6 | | mcd | $I_F = 10 \text{ mA}$ |
| | | BLUE | 6.3 | | 20 | | |



ATTENTION:
OBSERVE PRECAUTIONS FOR
HANDLING ELECTROSTATIC
SENSITIVE DEVICES

2 ma LOW CURRENT LED.
OPERATING CHARACTERISTICS AT 25°C AMBIENT
FOR 553-02XX-400)

| CHARACTERISTICS | L.E.D. COLOR | MIN | TYP | MAX | UNITS | TEST COND. |
|--------------------|--------------|-----|-----|-----|--------|------------------------|
| LUMINOUS INTENSITY | RED | 1.0 | 1.6 | | mcd | $I_F = 2 \text{ mA}$ |
| | YELLOW | 1.0 | 1.6 | | | |
| | GREEN | 1.0 | 1.6 | | | |
| FORWARD VOLTAGE | RED | | 1.7 | 2.2 | V | $I_F = 2 \text{ mA}$ |
| | YELLOW | | 1.8 | 2.7 | | |
| | GREEN | | 1.9 | 2.2 | | |
| REVERSE VOLTAGE | ALL | 5 | | | V | $I_R = 10 \mu\text{A}$ |
| PEAK WAVELENGTH | RED | | 635 | | nm | MEASURED AT PEAK |
| | YELLOW | | 585 | | | |
| | GREEN | | 565 | | | |
| VIEWING ANGLE | ALL | | 60 | | Degree | |

5 V., INTEGRAL RESISTOR LED
OPERATING CHARACTERISTICS AT 25°C AMBIENT
FOR 553-03XX-400)

| CHARACTERISTICS | L.E.D. COLOR | MIN | TYP | MAX | UNITS | TEST COND. |
|--------------------|--------------|-----|------|-----|--------|-------------------------|
| LUMINOUS INTENSITY | RED | 8.7 | 29 | | mcd | $V_F = 5 \text{ V}$ |
| | YELLOW | 3.7 | 12.6 | | | |
| | GREEN | 5.6 | 19 | | | |
| FORWARD CURRENT | RED | | 10 | 20 | mA | $V_F = 5 \text{ V}$ |
| | YELLOW | | 10 | 20 | | |
| | GREEN | | 12 | 20 | | |
| REVERSE VOLTAGE | ALL | 5 | | | V | $I_R = 100 \mu\text{A}$ |
| PEAK WAVELENGTH | RED | | 635 | | nm | MEASURED AT PEAK |
| | YELLOW | | 585 | | | |
| | GREEN | | 565 | | | |
| VIEWING ANGLE | ALL | | 60 | | Degree | |

THIS DRAWING AND THE CONTENTS HEREIN ARE CONFIDENTIAL AND THE SOLE PROPERTY OF DIALIGHT. REPRODUCTION OF THIS DRAWING OR CONSTRUCTION OF ANY PARTS WITHIN THIS DRAWING ARE FORBIDDEN WITHOUT THE WRITTEN CONSENT OF DIALIGHT.

| | | |
|---|-------------------|--|
| SCALE: 5:1 | DRAWING NUMBER | REV |
| ALL DIM'S IN: INCHES (MM) | C-15815 | F |
| TOLERANCES: UNLESS OTHERWISE SPECIFIED | TITLE | |
| FRACTIONS: $\pm 1/64$ | CBI, 3MM BI-LEVEL | |
| DECIMALS (.XX): $\pm .01$ | MATERIAL | |
| DECIMALS (.XXX): $\pm .005$ | | |
| DECIMALS (.XXXX): $\pm .0005$ | | |
| ANGLES: $\pm 1^\circ$ | | |
| FINISH: | | |
| FSCM 83330 | Dialight | 1501 ROUTE 34 SOUTH FARMINGDALE, NJ 07727 |
| | SHEET 1 OF 1 | FAMILY TABLE: |