

FEATURES AND SPECIFICATIONS

Features and Benefits

- Sizes 2 to 18 circuits
- Snap-in peg locks header to PCB for optimum retention
- Optional voided circuits available
- Various pin lengths available (contact Inside Sales)
- End-to-end stackable

Reference Information

Product Specification: PS-08-50

Packaging: Bag

UL File No.: E29179

CSA File No.: LR19980

TUV File No.: R75108

Mates With: 2139, 2145, 3069, 6442, 7674, 7675,

41695 and 41815

Designed In: Inches

Electrical

Voltage: 250V

Current: 7.0A

Contact Resistance: 6mΩ max.

Dielectric Withstanding Voltage: 1500V

Insulation Resistance: 50K MΩ min.

Mechanical

Durability:

Tin—25 cycles max.

Gold—100 cycles max.

Physical

Housing: White glass-filled polyester, UL 94V-0

Contact: Brass, 1.14mm (.045") square

Plating: See Table

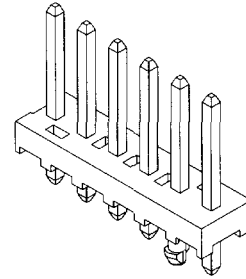
Temperature: 0 to +75°C

molex® 3.96mm (.156") Pitch
KK®

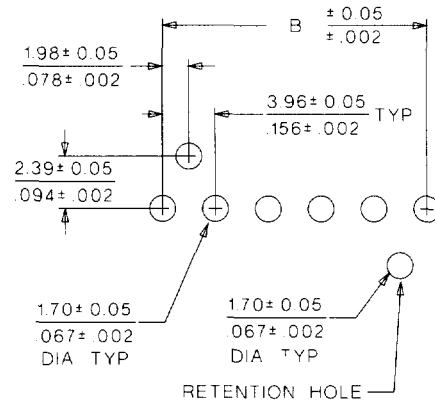
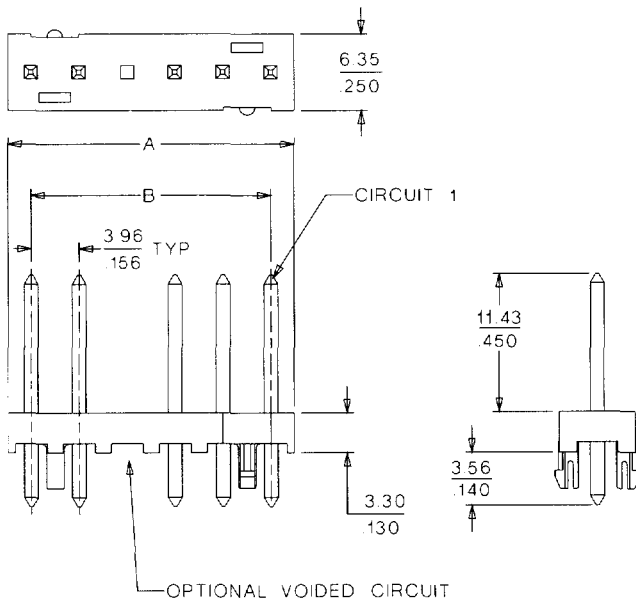
Solid Header

42871

**Vertical
With Snap-In Pegs**



PCB and Wire Connectors



PCB LAYOUT COMPONENT SIDE 157 ± 0.18
RECOMMENDED PCB THICKNESS $062 \pm .007$

ORDERING INFORMATION AND DIMENSIONS

Circuits	Order No.				Dimension		No. of Pegs
	Tin	15μ" Select Gold	30μ" Select Gold	Overall Gold	A	B	
2	26-60-9020	42871-0104	42871-0121	26-61-9020	7.77 (.306)	3.96 (.156)	1
3	26-60-9030	42871-0105	42871-0122	26-61-9030	11.73 (.462)	7.92 (.312)	2
4	26-60-9040	42871-0106	42871-0123	26-61-9040	15.70 (.618)	11.89 (.468)	2
5	26-60-9050	42871-0107	42871-0124	26-61-9050	19.66 (.774)	15.85 (.624)	2
6	26-60-9060	42871-0108	42871-0125	26-61-9060	23.62 (.930)	19.81 (.780)	2
7	26-60-9070	42871-0109	42871-0126	26-61-9070	27.58 (1.086)	23.77 (.936)	2
8	26-60-9080	42871-0110	42871-0127	26-61-9080	31.55 (1.242)	27.74 (1.092)	2
9	26-60-9090	42871-0111	42871-0128	26-61-9090	35.51 (1.398)	31.70 (1.248)	2
10	26-60-9100	42871-0112	42871-0129	26-61-9100	39.47 (1.554)	35.66 (1.404)	2
11	26-60-9110	42871-0113	42871-0130	26-61-9110	43.43 (1.710)	39.62 (1.560)	2
12	26-60-9120	42871-0114	42871-0131	26-61-9120	47.40 (1.866)	43.59 (1.716)	2
13	26-60-9130	42871-0115	42871-0132	26-61-9130	51.36 (2.022)	47.55 (1.872)	2
14	26-60-9140	42871-0116	42871-0133	26-61-9140	55.32 (2.178)	51.51 (2.028)	2
15	26-60-9150	42871-0117	42871-0134	26-61-9150	59.28 (2.334)	55.47 (2.184)	2
16	26-60-9160	42871-0118	42871-0135	26-61-9160	63.25 (2.490)	59.44 (2.340)	2
17	26-60-9170	42871-0119	42871-0136	26-61-9170	67.21 (2.646)	63.40 (2.496)	2
18	26-60-9180	42871-0120	42871-0137	26-61-9180	71.17 (2.802)	67.36 (2.652)	2