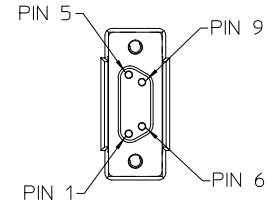
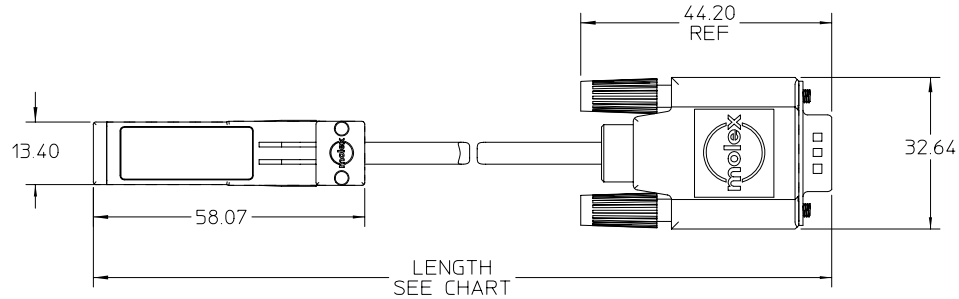
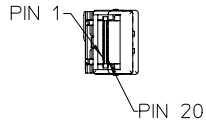
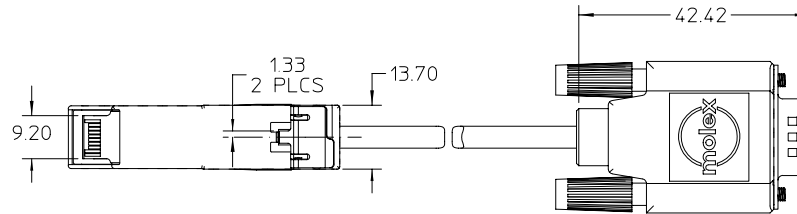
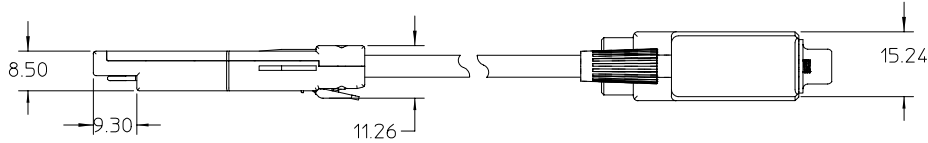


WIRING DIAGRAM			
SFP		DB-9	
PIN	SIGNAL	PIN	SIGNAL
19	Tx-	9	Rx-
18	Tx+	5	Rx+
13	Rx+	1	Tx+
12	Rx-	6	Tx-



SFP

MALE DB-9



SFP NOTES:

- MATERIALS
BACKSHELLS - NICKEL PLATED ZINC
LATCH - GLASS FILLED POLYCARBONATE
PCB - FR-4
RIVETS - TIN PLATED STEEL
- IMPEDANCE MATCHING SFP (100 OHMS) TO DB-9 (150 OHMS)

DB-9 NOTES:

- MATERIALS
CONTACTS - GOLD PLATED BRASS
SHIELD - TIN PLATED STEEL
BOOT - BLACK PVC
JACKSCREWS
SCREW - STEEL
HEAD - PVC
- CHARACTERISTIC IMPEDANCE 150 ± 10 OHMS MEASURED DIFFERENTIAL

PART NUMBER	LENGTH
73929-1001	1 M ± 0.05 M
73929-1002	3 M ± 0.07 M
73929-1003	5 M ± 0.08 M
73929-1005	2 M ± 0.06 M
73929-1006	4 M ± 0.07 M

CABLE NOTES:

- CHARACTERISTIC IMPEDANCE 150 ± 10 OHMS MEASURED DIFFERENTIAL
- SEE MOLEX DRAWINGS SD-71153-7*** FOR FURTHER DETAILS

EC NO: UOT20026803 DRAWN: DSLEWIS 2002/03/08 CHK: DDOYE 2002/02/12 APPR: DDOYE 2002/02/14	QUALITY SYMBOLS	GENERAL TOLERANCES (UNLESS SPECIFIED)		SCALE 1:1	DESIGN UNITS METRIC	THIRD ANGLE PROJECTION	REVISE ON CAD ONLY	
	-0 C=0	mm	INCH	DIMENSION STYLE MM ONLY				
		4 PLACES ± ---	± ---	DRAWN BY	DATE	TITLE SFP PLUG TO MALE DB-9 FIBRE CHANNEL (150 OHM) CABLE ASSEMBLY		
		3 PLACES ± ---	± ---	DSL	2001/12/13			
2 PLACES ± 0.25	± ---	CHECKED BY	DATE	MOLEX INCORPORATED				
1 PLACE ± 0.3	± ---	DLD	2001/12/17					
ANGULAR ± 2 °	DRAFT WHERE APPLICABLE		APPROVED BY	DATE	MATERIAL NO.	DOCUMENT NO.	SHEET NO.	
	MUST REMAIN WITHIN DIMENSIONS		DLD	1002/12/17	739291001	SD-73929-100	1 OF 1	
THIS DRAWING CONTAINS INFORMATION THAT IS PROPRIETARY TO MOLEX INCORPORATED AND SHOULD NOT BE USED WITHOUT WRITTEN PERMISSION								