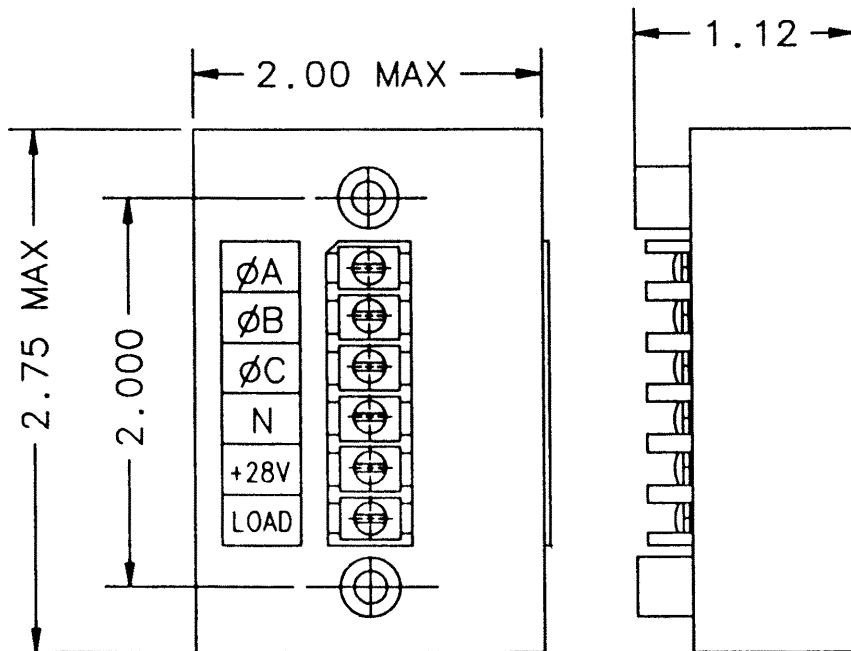


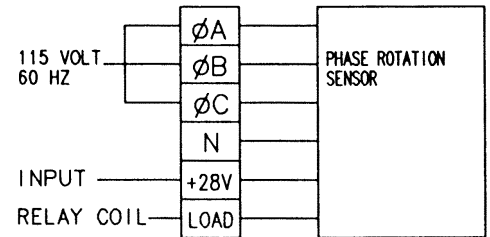
**E-326A 1 Amp, 115 VAC**

**Features:**

- Controls External Relay
- Epoxy Encapsulated
- 115 VAC, 60 Hz, 3Ø Operation
- 1 Amp
- High Reliability
- Meets many requirements of MIL-R-6106
- Light Weight Construction



**CONTACTOR CONFIGURATION**



**Notes:**

Dimensions for this product are expressed in inches.  
Multiply values by 25.4 for millimeters.

PRODUCT SPECIFICATIONS	
Construction	Epoxy Encapsulated
Operating Voltage and Frequency	Continuous Duty, 115 Volt, 3 Phase, L to N, 60 Hz
Max. Input Voltage Range for Normal Operation	115 ±20V
Operation	The phase rotation sensor will apply a DC potential of +28V to any external relay coil or load when the phase rotation is A-B-C and shall remove the +28V signal when phase rotation is other than A-B-C.
Normal Load	1 Amp Continuous 5 Amps Intermittent (.020 Second Maximum)
Environmental:	
Temperature Operating	-55°C to +71°C
Vibration	.060 DA 5 to 55 Hz
Acceleration	55 - 200 Hz Log Constant
Weight	4.5 Oz.

For factory-direct application assistance, contact the HARTMAN product team at (419) 521-9500, Fax (419) 526-2749.

© 2004 by Tyco Electronics Corporation. All Rights Reserved.  
HARTMAN and TYCO are trademarks.