

PLEASE CHECK WWW.MOLEX.COM FOR LATEST PART INFORMATION

Part Number: [0474100001](#)
Status: **Active**
Overview: [battery connectors](#)
Description: 2.00mm (.079") Pitch Battery Connector, 4 Circuits, SMT, Width 7.00mm (.276"), Working Height 3.80mm (.150"), Lead-free

Documents:

[3D Model](#) [Product Specification PS-47158-001 \(PDF\)](#)
[Drawing \(PDF\)](#) [RoHS Certificate of Compliance \(PDF\)](#)

General

Product Family	PCB Headers
Series	47410
Application	Board-to-Board
Overview	battery connectors
Product Name	Battery Connector, Compression Connector, One Piece

Physical

Breakaway	No
Circuits (Loaded)	4
Circuits (maximum)	4
Color - Resin	Black
Durability (mating cycles max)	10,000
Glow-Wire Compliant	No
Lock to Mating Part	None
Mated Height (in)	0.150 In
Mated Height (mm)	3.80 mm
Material - Metal	Phosphor Bronze
Material - Plating Mating	Gold
Material - Plating Termination	Nickel
Material - Resin	High Performance Thermoplastic
Number of Rows	1
Orientation	Vertical
PCB Locator	No
PCB Retention	None
Packaging Type	Embossed Tape on Reel
Pitch - Mating Interface (in)	0.079 In
Pitch - Mating Interface (mm)	2.00 mm
Pitch - Term. Interface (in)	0.079 In
Pitch - Term. Interface (mm)	2.00 mm
Plating min: Mating (µin)	30
Plating min: Mating (µm)	0.75
Plating min: Termination (µin)	50
Plating min: Termination (µm)	1.25
Polarized to Mating Part	No
Polarized to PCB	No
Shrouded	No
Stackable	Yes
Temperature Range - Operating	-40°C to +85°C
Termination Interface: Style	Surface Mount

Electrical

Current - Maximum per Contact	1A
Voltage - Maximum	200V (RMS)

Material Info

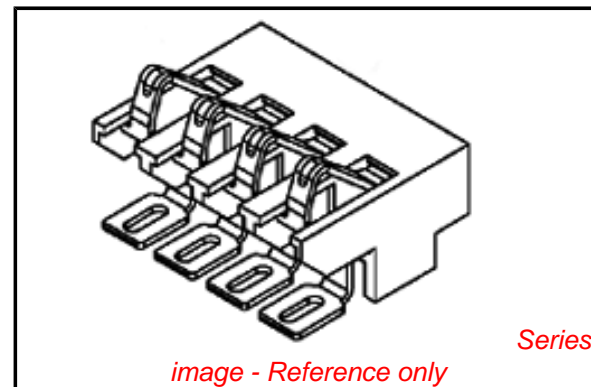


image - Reference only

EU RoHS

**ELV and RoHS
Compliant**
REACH SVHC
 Not Reviewed
**Halogen-Free
Status**

China RoHS



**Need more information on product
environmental compliance?**

Email productcompliance@molex.com
 For a multiple part number RoHS Certificate of Compliance, [click here](#)

Please visit the [Contact Us](#) section for any non-product compliance questions.

Search Parts in this Series
[47410Series](#)

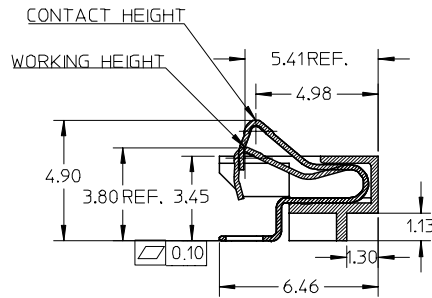
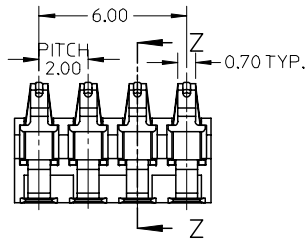
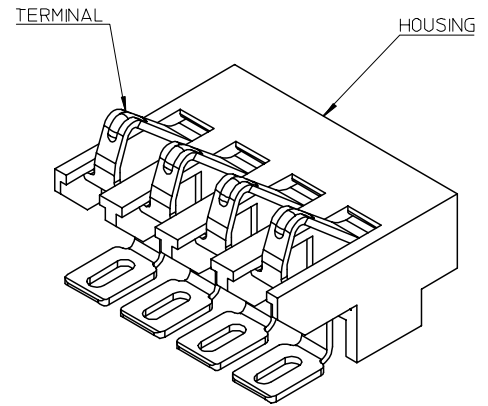
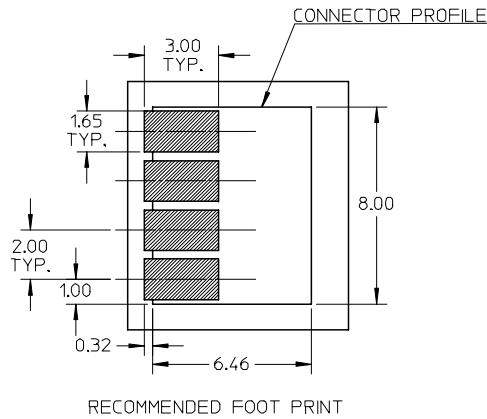
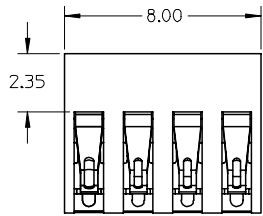
Reference - Drawing Numbers

Product Specification
Sales Drawing

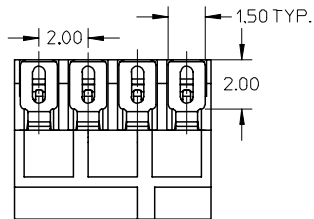
PS-47158-001
SD-47410-001

This document was generated on 05/26/2010

PLEASE CHECK WWW.MOLEX.COM FOR LATEST PART INFORMATION



SECTION Z-Z



NOTE:

1.MATERIAL:

HOUSING: LCP, 30% GLASS-FILLED, UL 94V-0, COLOR :BLACK
 TERMINAL: 0.20MM PHOSPHOR BRONZE.

2.FINISH:

CONTACT AREA: 0.75 MICRON GOLD MIN OVER 1.25 MICRON NICKEL MIN.
 SOLDER AREA: GOLD FLASH OVER 1.25 MICRON NICKEL MIN.
 REST AREA: 1.25 MICRON NICKEL MIN.

3.COPLANARITY: 0.1 MAX AMONG THESE SOLDER TAILS.

4.PRODUCT SPECIFICATION: PS-47158-001

5.WORKING HEIGH: 0.35MM REF.

MODIFY DIMENSION EC NO: 2006/05/19 DRWN: LSHEN CHKD: XU APPR: JCHEN 2006/06/07 2006/06/07 2006/06/07	QUALITY SYMBOLS ▽=0 ◻=0	GENERAL TOLERANCES (UNLESS SPECIFIED)		DIMENSION STYLE MM ONLY		SCALE 5:1	DESIGN UNITS METRIC	THIRD ANGLE PROJECTION		
				DRAWN BY LSHEN	DATE 2006/02/05	TITLE 2.0MM PITCH 4 CIRCUITS 0.7MM CONTACT WIDTH BATTERY CONNECTOR				
				CHECKED BY XU XIANG	DATE 2006/04/06	MOLEX INCORPORATED				
				APPROVED BY JENNY	DATE 2006/04/11	MATERIAL NO. 474100001		DOCUMENT NO. SD-47410-001	SHEET NO. 1 OF 1	
DRAFT WHERE APPLICABLE MUST REMAIN WITHIN DIMENSIONS		SIZE A3		THIS DRAWING CONTAINS INFORMATION THAT IS PROPRIETARY TO MOLEX INCORPORATED AND SHOULD NOT BE USED WITHOUT WRITTEN PERMISSION						