

Features

- Frequency Range: 1400~1700MHz
- Low Noise: 1.1dB(Typical)
- Standard Hermetic Package
- Operating Temperature Range: -55°C ~ +85°C

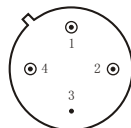
Specifications (50 Ω, V_{CC} = +5V, T_A = -55°C ~ +85°C)

Parameter	Symbol	Unit	Guaranteed	Typical
Frequency Range	f _L ~f _H	MHz	1400~1700	—
Gain	G _p	dB	≥23.0	28.0
Gain Flatness	ΔG _p	dB	—	±0.5
Noise Figure	F _n	dB	≤1.4 Δ	1.1
Input VSWR	VSWR _i	—	≤2.0:1 Δ	1.6:1
Output VSWR	VSWR _o	—	≤2.0:1 Δ	1.6:1
Output Power @ 1dB Compression	P ₋₁	dBm	≥10.0 * Δ	12.0
DC Current	I _{CC}	mA	—	60

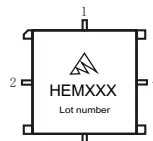
“*”f = 1700MHz; “Δ” T_A = 24 ± 1°C;

Maximum Rating

- DC Voltage : +6VDC
- RF Input: +10dBm
- Storage Temp: +125°C



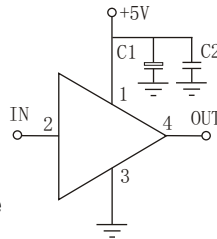
TO-8D



SMO-8D

Application Notes

1. Typical application shown as right, C₁ = 10~33 μF ; C₂ = 3300~6800pF;
2. See assembly section for mounting information
3. Connectorized package(SMA-1) available
4. ESD observe handling precautions



Typical Curves

