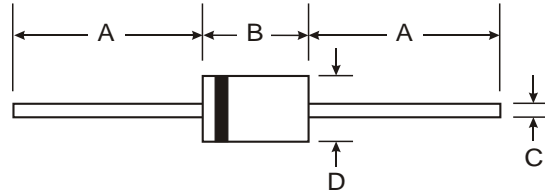


### Features

- Glass Passivated Die Construction
- Fast Switching for High Efficiency
- Surge Overload Rating to 30A Peak
- Low Reverse Leakage Current
- **Lead Free Finish, RoHS Compliant (Note 4)**



### Mechanical Data

- Case: DO-41 Plastic, A-405
- Case Material: Molded Plastic. UL Flammability Classification Rating 94V-0
- Moisture Sensitivity: Level 1 per J-STD-020C
- Terminals: Finish - Tin. Plated Leads Solderable per MIL-STD-202, Method 208 **(e3)**
- Polarity: Cathode Band
- Marking: Type Number
- Ordering Information: See Last Page
- DO-41 Weight: 0.35 grams (approximate)
- A-405 Weight: 0.20 grams (approximate)

Dim	DO-41 Plastic		A-405	
	Min	Max	Min	Max
A	25.40		25.40	
B	4.06	5.21	4.10	5.20
C	0.71	0.864	0.53	0.64
D	2.00	2.72	2.00	2.70
<b>All Dimensions in mm</b>				

"GL" Suffix Designates A-405 Package  
"G" Suffix Designates DO-41 Package

### Maximum Ratings and Electrical Characteristics @ T<sub>A</sub> = 25°C unless otherwise specified

Single phase, half wave, 60Hz, resistive or inductive load.  
For capacitive load, derate current by 20%.

Characteristic	Symbol	PR1001 G/GL	PR1002 G/GL	PR1003 G/GL	PR1004 G/GL	PR1005 G/GL	PR1006 G/GL	PR1007 G/GL	Unit
Peak Repetitive Reverse Voltage Working Peak Reverse Voltage DC Blocking Voltage (Note 5)	V <sub>RRM</sub> V <sub>RWM</sub> V <sub>R</sub>	50	100	200	400	600	800	1000	V
RMS Reverse Voltage	V <sub>R(RMS)</sub>	35	70	140	280	420	560	700	V
Average Rectified Output Current (Note 1) @ T <sub>A</sub> = 55°C	I <sub>O</sub>	1.0							A
Non-Repetitive Peak Forward Surge Current 8.3ms Single half sine-wave Superimposed on Rated Load	I <sub>FSM</sub>	30							A
Forward Voltage Drop @ I <sub>F</sub> = 1.0A	V <sub>FM</sub>	1.3							V
Peak Reverse Current @ T <sub>A</sub> = 25°C at Rated DC Blocking Voltage (Note 5) @ T <sub>A</sub> = 100°C	I <sub>RM</sub>	5.0 50							μA
Reverse Recovery Time (Note 3)	t <sub>rr</sub>	150					250	500	ns
Typical Total Capacitance (Note 2)	C <sub>T</sub>	15					8		pF
Typical Thermal Resistance Junction to Ambient	R <sub>JA</sub>	95							°C/W
Operating and Storage Temperature Range	T <sub>j</sub> , T <sub>STG</sub>	-65 to +150							°C

- Notes:
1. Valid provided that leads are maintained at ambient temperature at a distance of 9.5mm from the case.
  2. Measured at 1.0MHz and applied reverse voltage of 4.0V DC.
  3. Measured with I<sub>F</sub> = 0.5A, I<sub>R</sub> = 1.0A, I<sub>rr</sub> = 0.25A. See figure 5.
  4. RoHS revision 13.2.2003. Glass and high temperature solder exemptions applied, see *EU Directive Annex Notes 5 and 7*.
  5. Short duration pulse test used to minimize self-heating effect.

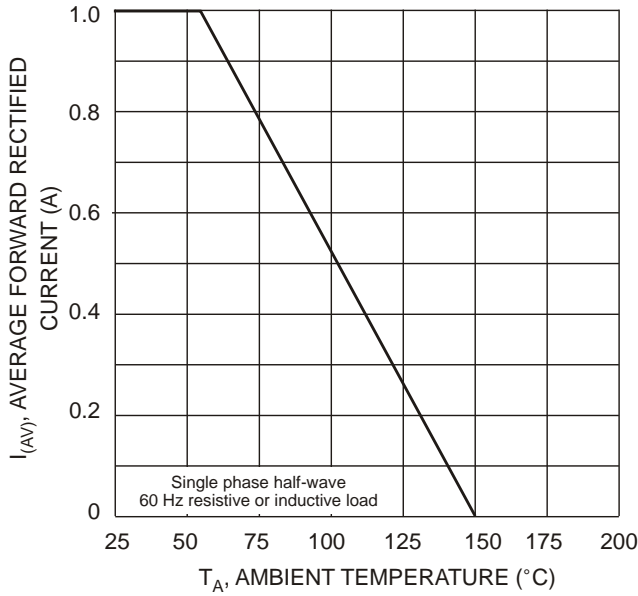


Fig. 1 Forward Derating Curve

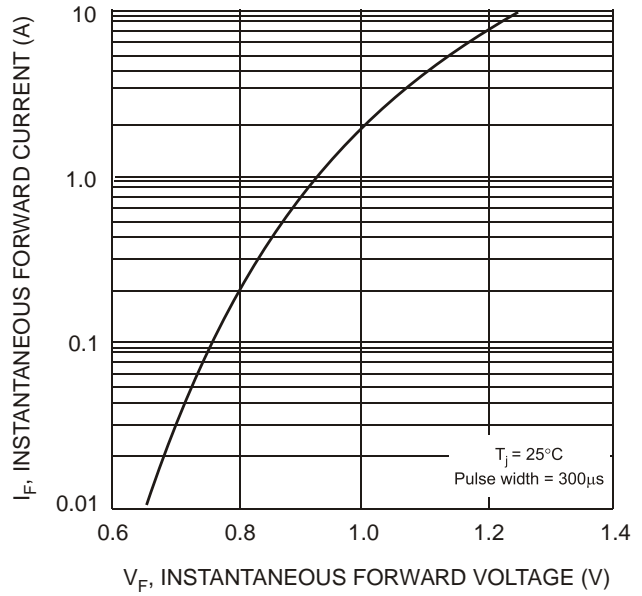


Fig. 2 Typical Forward Characteristics

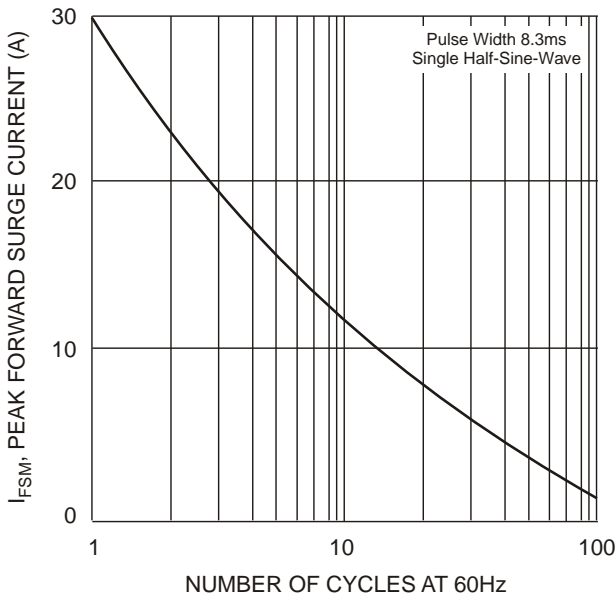


Fig. 3 Peak Forward Surge Current

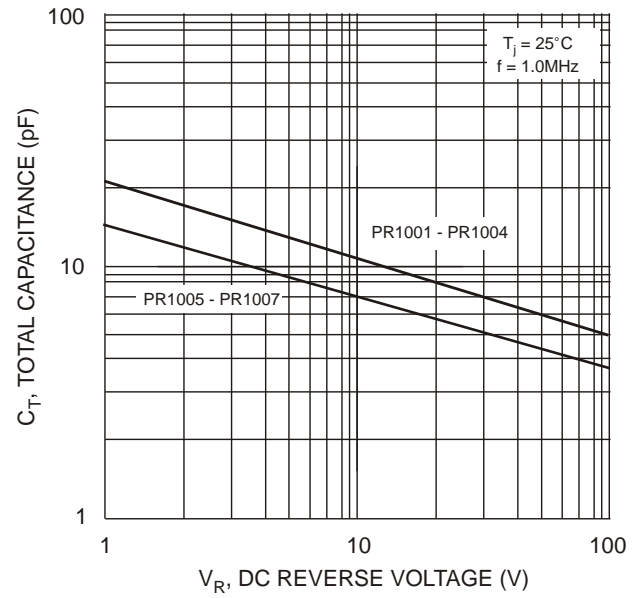
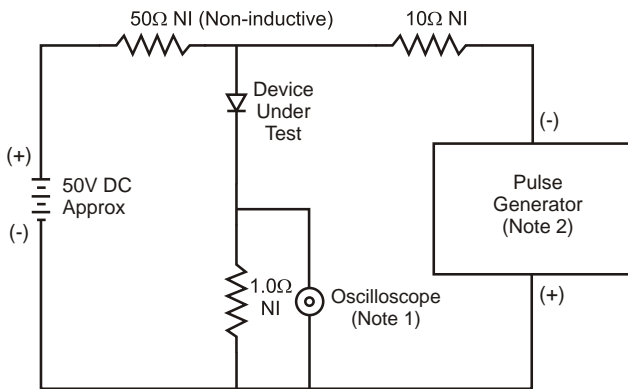
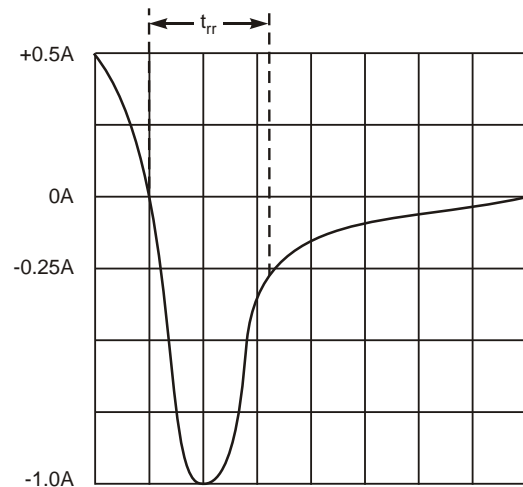


Fig. 4 Typical Total Capacitance



- Notes:
1. Rise Time = 7.0ns max. Input Impedance = 1.0MΩ, 22pF.
  2. Rise Time = 10ns max. Input Impedance = 50Ω.



Set time base for 50/100 ns/cm

Fig. 5 Reverse Recovery Time Characteristic and Test Circuit

**Ordering Information** (Note 6)

Device	Packaging	Shipping
PR1001G-A	DO-41	5K/Ammo Pack
PR1001G-B	DO-41	1K/Bulk
PR1001G-T	DO-41	5K/Tape & Reel, 13-inch
PR1002G-A	DO-41	5K/Ammo Pack
PR1002G-B	DO-41	1K/Bulk
PR1002G-T	DO-41	5K/Tape & Reel, 13-inch
PR1003G-A	DO-41	5K/Ammo Pack
PR1003G-B	DO-41	1K/Bulk
PR1003G-T	DO-41	5K/Tape & Reel, 13-inch
PR1004G-A	DO-41	5K/Ammo Pack
PR1004G-B	DO-41	1K/Bulk
PR1004G-T	DO-41	5K/Tape & Reel, 13-inch
PR1005G-A	DO-41	5K/Ammo Pack
PR1005G-B	DO-41	1K/Bulk
PR1005G-T	DO-41	5K/Tape & Reel, 13-inch
PR1001GL-T	A-405	5K/Tape & Reel, 13-inch
PR1002GL-T	A-405	5K/Tape & Reel, 13-inch
PR1003GL-T	A-405	5K/Tape & Reel, 13-inch
PR1004GL-T	A-405	5K/Tape & Reel, 13-inch
PR1005GL-T	A-405	5K/Tape & Reel, 13-inch

Notes: 6. For packaging details, visit our website at <http://www.diodes.com/datasheets/ap02008.pdf>.

**IMPORTANT NOTICE**

Diodes Incorporated and its subsidiaries reserve the right to make modifications, enhancements, improvements, corrections or other changes without further notice to any product herein. Diodes Incorporated does not assume any liability arising out of the application or use of any product described herein; neither does it convey any license under its patent rights, nor the rights of others. The user of products in such applications shall assume all risks of such use and will agree to hold Diodes Incorporated and all the companies whose products are represented on our website, harmless against all damages.

**LIFE SUPPORT**

Diodes Incorporated products are not authorized for use as critical components in life support devices or systems without the expressed written approval of the President of Diodes Incorporated.