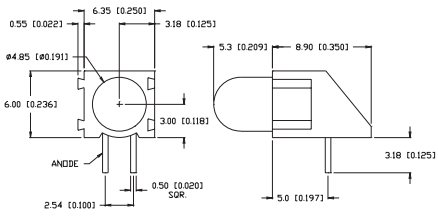




## SSF-LXH100M Series

## T-5mm Single Level Mating



### FEATURES / OPTIONS

- ▶ State-of-the-Art, Chip Technology
- ▶ Easy Drop-In Board Installation
- ▶ Right Angle to the Board Position
- ▶ Choice of Colors and Lens Finishes
- ▶ Low Current Versions Available
- ▶ Color or Intensity Sorting Available
- ▶ Blinking LED
- ▶ With Internal Resistor for 5V and 12V Operation
- ▶ Black or Gray Holders for High Contrast
- ▶ Color Combinations
- ▶ Mating Feature Allows for Multiple Positions

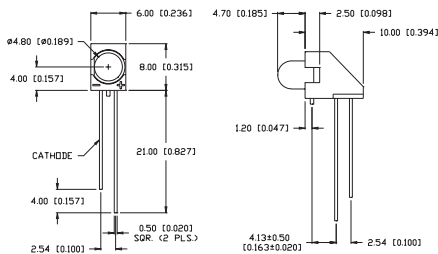
### APPLICATIONS / USES

- ▶ Board Level Status Indicators
- ▶ Board Level Fault Indicators
- ▶ Circuit Troubleshooting Indicators
- ▶ Warning/Alarm Lights
- ▶ Backlighting of Overlays
- ▶ Post Lighting Switches and Keypads

Lumex Part Number	Die Material	Emitted Color	Peak (nm)	Lens	Operating Current (mA)	Operating TYP. Vf (V)	Brightness TYP. Mcd	@ mA	View Angle° 2θ	Component LED Used
<b>HIGH BRIGHTNESS</b>										
SSF-LXH100MSID	AllnGaP	Super High Intensity Red	636	Red Diffused	5-25	2	700	20	60	SSL-LX509F3SID
SSF-LXH100MSOD	AllnGaP	Super Orange	610	Orange Diffused	5-25	2	850	20	60	SSL-LX509F3SOD
SSF-LXH100MSUGD	AllnGaP	Super Ultra Green	574	Green Diffused	5-25	2.2	170	20	60	SSL-LX509F3SUGD
SSF-LXH100MSYD	AllnGaP	Super Yellow	590	Yellow Diffused	5-25	2	300	20	60	SSL-LX509F3SYD
SSF-LXH100MUSBD	InGaN/SiC	Ultra Super Blue	470	Blue Diffused	5-25	3.5	300	20	60	SSL-LX509F3USBD
SSF-LXH100MUWW	InGaN/SiC	Ultra White	-	White Diffused	5-25	3.5	650	20	30	SSL-LX509F3UWW

## SSF-LXH2350 Series

## T-5mm Single Level, Offset Cathode Lead



### FEATURES / OPTIONS

- ▶ State-of-the-Art, Chip Technology
- ▶ Easy Drop-In Board Installation
- ▶ Right Angle to the Board Position
- ▶ Choice of Colors and Lens Finishes
- ▶ Low Current Versions Available
- ▶ Color or Intensity Sorting Available
- ▶ Blinking LED
- ▶ With Internal Resistor for 5V and 12V Operation
- ▶ Black or Gray Holders for High Contrast

### APPLICATIONS / USES

- ▶ Board Level Status Indicators
- ▶ Board Level Fault Indicators
- ▶ Circuit Troubleshooting Indicators
- ▶ Warning/Alarm Lights
- ▶ Backlighting of Overlays
- ▶ Post Lighting Switches and Keypads

Lumex Part Number	Die Material	Emitted Color	Peak (nm)	Lens	Operating Current (mA)	Operating TYP. Vf (V)	Brightness TYP. Mcd	@ mA	View Angle° 2θ	Component LED Used
<b>HIGH BRIGHTNESS</b>										
SSF-LXH2350SID	AllnGaP	Super High Intensity Red	636	Red Diffused	5-25	2	700	20	60	SSL-LX4073SID
SSF-LXH2350SOD	AllnGaP	Super Orange	610	Orange Diffused	5-25	2	850	20	60	SSL-LX4073SOD
SSF-LXH2350SUGD	AllnGaP	Super Ultra Green	574	Green Diffused	5-25	2.2	170	20	60	SSL-LX4073SUGD
SSF-LXH2350SYD	AllnGaP	Super Yellow	590	Yellow Diffused	5-25	2	300	20	60	SSL-LX4073SYD
SSF-LXH2350USBD	InGaN/SiC	Ultra Super Blue	470	Blue Diffused	5-25	3.5	300	20	60	SSL-LX4073USBD



USA/Canada +1-800-278-5666  
Europe +49-6081-964380  
Asia +886-3-5821124



[www.lumex.com](http://www.lumex.com)



USA/Canada +1-847-359-8904  
Europe +49-6081-964381  
Asia +886-3-5821154