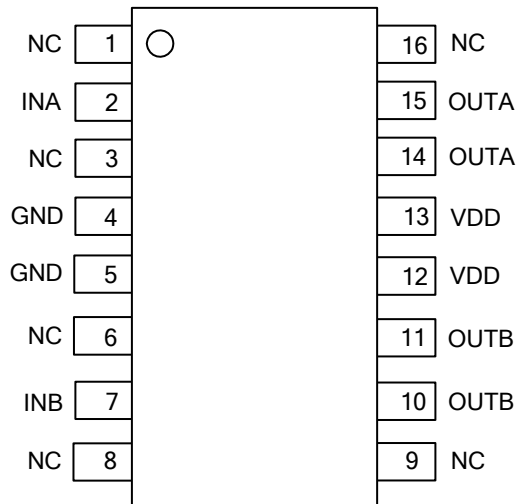


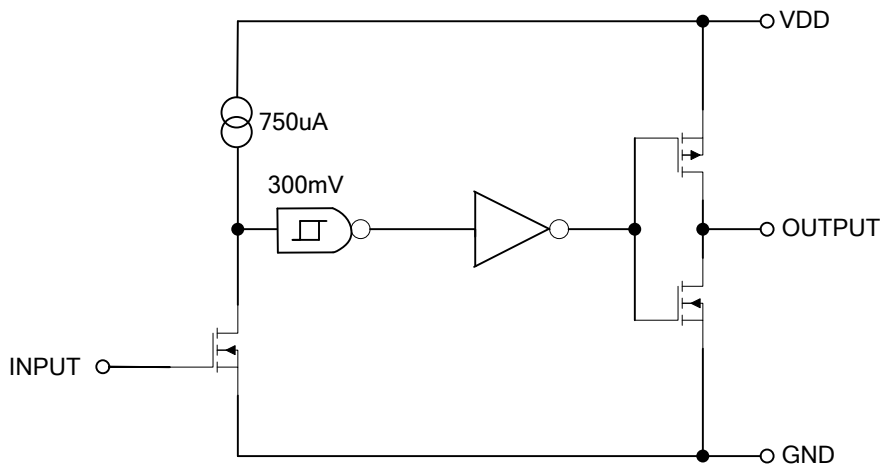
■ PIN CONFIGURATION



■ FUNCTION TABLE (each gate)

INPUT(INA or INB)	OUTPUT(OUTA or OUTB)
H	H
L	L

■ FUNCTIONAL BLOCK DIAGRAM



■ ABSOLUTE MAXIMUM RATING($T_a=25^{\circ}\text{C}$, unless otherwise specified)

PARAMETER	SYMBOL	RATINGS	UNIT
Supply Voltage	V_{DD}	22	V
Input Voltage	$V_{(INA, INB)}$	GND - 5 ~ $V_{DD} + 0.3$	V

Note: Absolute maximum ratings are those values beyond which the device could be permanently damaged.
 Absolute maximum ratings are stress ratings only and functional device operation is not implied.

■ RECOMMENDED OPERATING CONDITIONS

PARAMETER	SYMBOL	RATINGS	UNIT
Supply Voltage	V_{DD}	4.5 ~ 18	V
Operating Temperature	T_{OPR}	-40 ~ 125	$^{\circ}\text{C}$

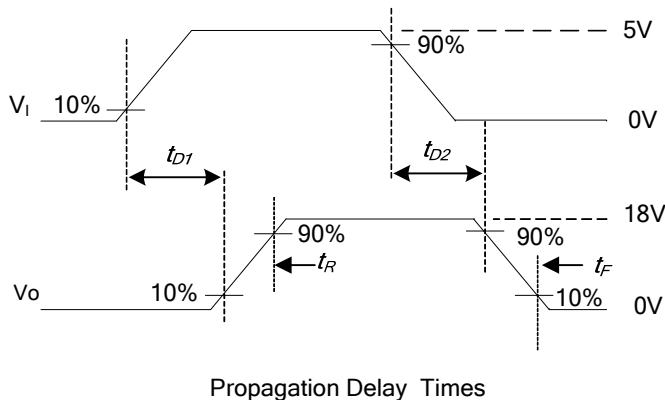
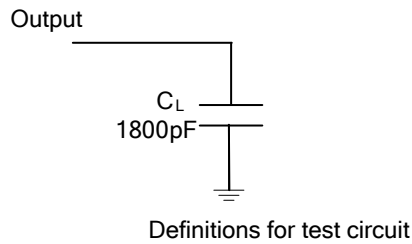
■ DC ELECTRICAL CHARACTERISTICS($V_{DD}=4.5\text{V to }18\text{V}$, $T_a=25^{\circ}\text{C}$, unless otherwise specified)

PARAMETER	SYMBOL	TEST CONDITIONS	MIN	TYP	MAX	UNIT
Input Voltage	High	V_{IH}	2.4			V
	Low	V_{IL}			0.8	V
Input Current	I_{IN}	$0\text{V} \leq V_{IN} \leq V_{DD}$	-1		1	μA
Output Voltage	High	V_{OH}	$V_{DD}-0.025$			V
	Low	V_{OL}			0.025	V
Output Resistance	High	R_{OH}	$I_{OUT}=10\text{mA}, V_{DD}=18\text{V}$	2.8	5	Ω
	Low	R_{OL}	$I_{OUT}=10\text{mA}, V_{DD}=18\text{V}$	3.5	5	Ω
Peak Output Current	I_{PK}			3		A
Latch-Up Protection Withstand Reverse Current	I_{REV}	Duty Cycle $\leq 2\%$, $t \leq 300 \text{ usec}$		>1.5		A
Power Supply Current	I_S	$V_{IN}=3\text{V}(\text{Both inputs})$		1.5	2.5	mA
		$V_{IN}=0\text{V}(\text{Both inputs})$		0.15	0.25	mA

■ SWITCHING CHARACTERISTICS($T_a=25^{\circ}\text{C}$, Input: $t_R=t_F \leq 10\text{ns}$, unless otherwise specified)

PARAMETER	SYMBOL	TEST CONDITIONS	MIN	TYP	MAX	UNIT
Rise Time	t_R	$V_{DD}=18\text{V}, C_L=1800\text{pF}$		23	35	ns
Fall Time	t_F	$V_{DD}=18\text{V}, C_L=1800\text{pF}$		25	35	ns
Delay Time	t_{D1}	$V_{DD}=18\text{V}, C_L=1800\text{pF}$		33	75	ns
Delay Time	t_{D2}	$V_{DD}=18\text{V}, C_L=1800\text{pF}$		38	75	ns

■ TEST CIRCUIT AND WAVEFORMS



Note: CL includes probe and jig capacitance.
 Input: 100kHz, square wave, $t_R = t_F \leq 10\text{ns}$

UTC assumes no responsibility for equipment failures that result from using products at values that exceed, even momentarily, rated values (such as maximum ratings, operating condition ranges, or other parameters) listed in products specifications of any and all UTC products described or contained herein. UTC products are not designed for use in life support appliances, devices or systems where malfunction of these products can be reasonably expected to result in personal injury. Reproduction in whole or in part is prohibited without the prior written consent of the copyright owner. The information presented in this document does not form part of any quotation or contract, is believed to be accurate and reliable and may be changed without notice.