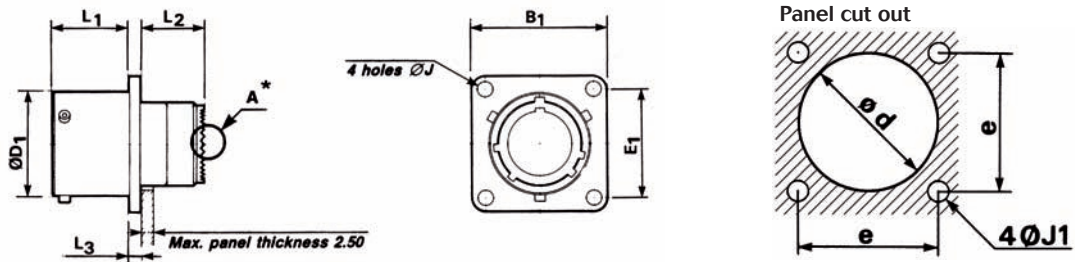




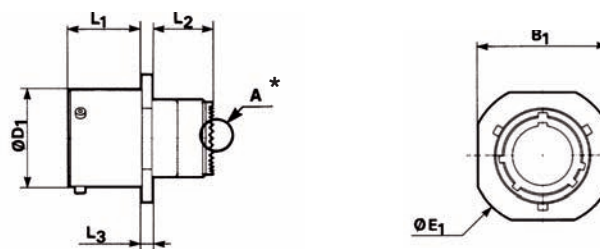
Dimensions

Receptacle type 0



Shell size		09	11	13	15	17	19	21	23	25	
B1	Min	23.70	26.05	28.50	30.85	33.20	36.40	39.55	42.75	46.00	
	Max	24.30	26.70	29.05	31.45	33.80	37.00	40.15	43.35	46.50	
E1		18.26	20.62	23.01	24.61	26.97	29.36	31.75	34.93	38.10	
D1	Min	14.40	17.65	21.40	24.65	27.82	29.24	33.70	36.92	40.06	
	Max	14.53	17.78	21.59	24.77	27.94	30.66	33.83	37.00	40.18	
J	Min	3.25	3.25	3.25	3.25	3.25	3.25	3.25	3.73	3.73	
	Max	3.35	3.35	3.35	3.35	3.35	3.35	3.35	3.83	3.83	
L1	Min	15.93	15.93	15.93	15.93	15.93	15.93	15.17	15.17	15.17	
	Max	16.05	16.05	16.05	16.05	16.05	16.05	15.29	15.29	15.29	
L2	Min	13.23	13.23	13.23	13.23	13.23	13.23	13.23	13.23	13.23	
	Max	13.49	13.49	13.49	13.49	13.49	13.49	13.49	13.49	13.49	
L3	Min	2.14	2.14	2.14	2.14	2.14	2.14	2.90	2.90	2.90	
	Max	2.54	2.54	2.54	2.54	2.54	2.54	3.30	3.30	3.30	
d		Min	15.70	18.70	21.80	25.00	28.30	31.00	34.20	37.30	40.50
J1		± 0.15	3.25	3.25	3.25	3.25	3.25	3.25	3.91	3.91	
e			18.26	20.62	23.01	24.61	26.97	29.36	31.75	34.92	38.10

Cable connecting receptacle type 1



Shell size		09	11	13	15	17	19	21	23	25
B1	Min	18.35	21.65	25.05	27.25	30.78	34.05	37.45	41.45	45.93
	Max	18.92	22.22	25.62	27.82	31.35	34.62	38.02	42.02	46.50
E1	Min	21.80	25.10	28.50	30.70	34.10	37.50	40.90	44.90	49.40
	Max	22.35	25.65	29.05	31.25	34.65	38.05	41.45	45.45	49.95
D1	Min	14.40	17.65	21.40	24.65	27.82	29.24	33.70	36.92	40.06
	Max	14.53	17.78	21.59	24.77	27.94	30.66	33.83	37.00	40.18
L1	Min	15.93	15.93	15.93	15.93	15.93	15.93	15.17	15.17	15.17
	Max	16.05	16.05	16.05	16.05	16.05	16.05	15.29	15.29	15.29
L2	Min	13.23	13.23	13.23	13.23	13.23	13.23	13.23	13.23	13.23
	Max	13.45	13.45	13.45	13.45	13.45	13.45	13.45	13.45	13.45
L3	Min	2.14	2.14	2.14	2.14	2.14	2.14	2.90	2.90	2.90
	Max	2.54	2.54	2.54	2.54	2.54	2.54	3.30	3.30	3.30