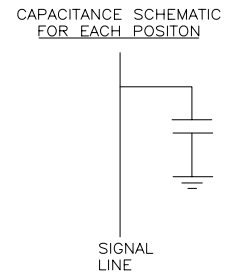
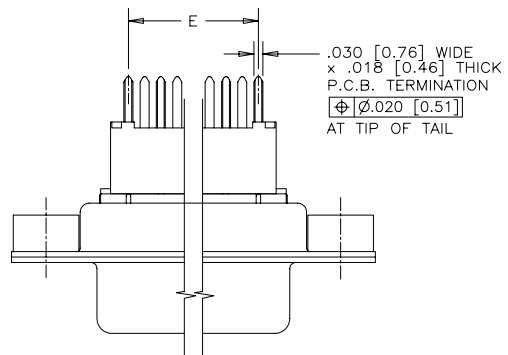


REVISIONS			
REV	ECN, ERN NO.	DATE	APPRD.
A	PRODUCT DRAWING (EAR 12900)	JAN26/06	K.L.



ORDERING CODE: **F C E 1 7 - E 0 9 P N - 2 E 0 G**

**SERIES**  
FCE17=FILTERED D-SUB, RoHS

**SIZE/NUMBER OF CONTACTS**  
E09, A15, B25, OR C37

**CONNECTOR STYLE**  
P=PIN  
S=SOCKET

**TERMINATION TYPE**  
N=VERTICAL MOUNT PC TAIL,  
.470 [11.94] FLANGE TO BOARD

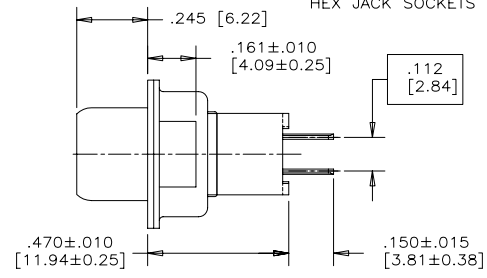
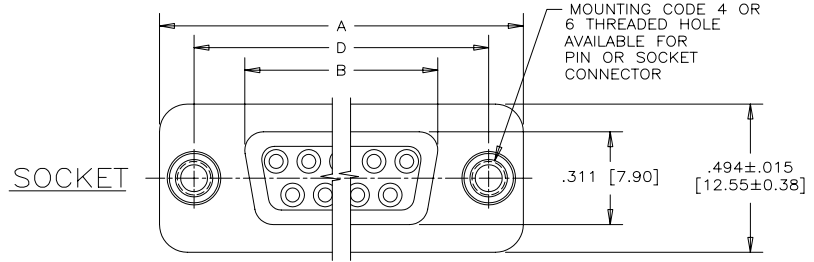
**MOUNTING**  
2=.120[3.05] DIA THROUGH HOLE  
3=#4-40 UNC SELF-LOCKING THREAD  
4=#4-40 UNC THREAD  
5=#4-40 THREADED STANDOFF  
6=M3 x 0.5 THREAD  
A=#4-40 THREADED STANDOFF WITH BOARDLOCK  
E=CODE 4 MOUNTING WITH #4-40 UNC HEX JACK SOCKETS SUPPLIED

**CONTACT FINISH/GOLD THICKNESS**  
NO DIGIT=STANDARD 15 MICRONS  
[0.38 MICRONS] GOLD ON MATEING AREA  
G=50 MICRONS [1.27 MICRONS] GOLD ON MATING AREA

**MODIFIER**  
O=STANDARD

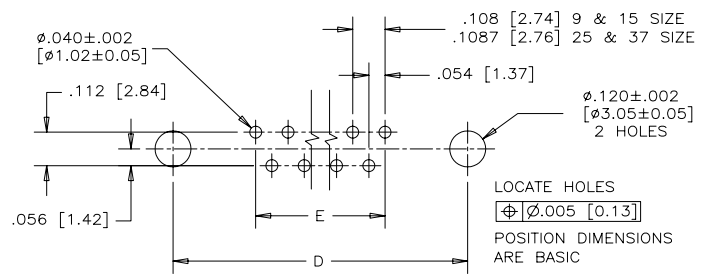
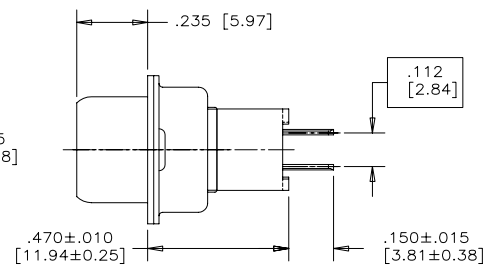
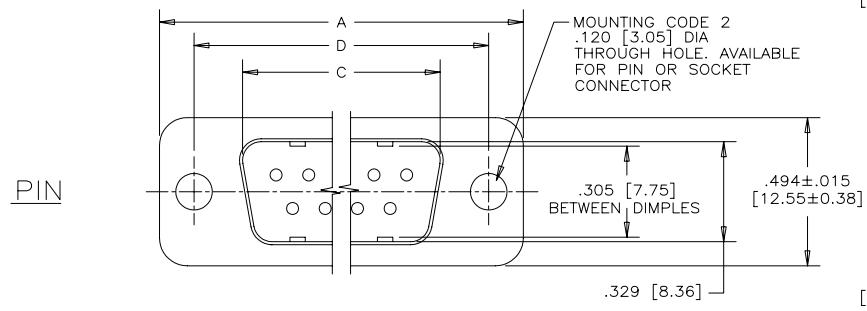
**FILTER CAPACITANCE**  
D=50 pF      5=1000 pF  
B=100 pF     7=1200 pF  
O=180 pF     J=1500 pF  
F=330 pF     E=2200 pF  
1=470 pF     9=5600 pF  
4=820 pF     8=47000 pF  
N=NO FILTERS

REFER TO AMPHENOL CATALOGUE FOR FILTER PERFORMANCE CHARACTERISTICS



**NOTES:**

- 1) MATERIALS: ALL MATERIALS ARE RoHS COMPLIANT.  
- SHELL: STEEL, TIN PLATED  
- CONTACTS: PHOSPHOR BRONZE, GOLD PLATED OVER 50µ" [1.27 MICRONS] NICKEL IN THE MATING AREA AND 100µ" [2.54 MICRONS] MIN. MATTE TIN ON THE TAILS.  
- INSULATOR: ENGINEERING THERMOPLASTIC, GLASS REINFORCED, UL FLAMMABILITY RATING 94V-0, COLOUR: BLACK  
- BOARDLOCK: COPPER ALLOY, TIN PLATED.  
- MOUNTING HARDWARE, STEEL OR COPPER ALLOY, TIN OR NICKEL PLATED.
- 2) CONTACT RESISTANCE: 15 MILLIOHMS MAXIMUM
- 3) INSULATION RESISTANCE: 3000 MEGOHMS MINIMUM
- 4) CURRENT RATING: 5 AMPS MAXIMUM
- 5) OPERATING TEMPERATURE: -40°C TO 85°C
- 6) TOLERANCE ±.005 [0.13] UNLESS INDICATED OTHERWISE.



SIZE	STYLE	A±.015 [0.38]	B±.005 [0.13]	C±.005 [0.13]	D±.005 [0.13]	E BSC.
E09	PIN	1.213 [30.81]	-----	.666 [16.92]	.984 [24.99]	.432 [10.97]
	SOCKET	-----	.643 [16.33]	-----	-----	-----
A15	PIN	1.541 [39.14]	-----	.994 [25.25]	1.312 [33.32]	.756 [19.20]
	SOCKET	-----	.971 [24.66]	-----	-----	-----
B25	PIN	2.088 [53.04]	-----	1.534 [38.96]	1.852 [47.04]	1.304 [33.12]
	SOCKET	-----	1.511 [38.38]	-----	-----	-----
C37	PIN	2.729 [69.32]	-----	2.182 [55.42]	2.500 [63.50]	1.956 [49.68]
	SOCKET	-----	2.159 [54.84]	-----	-----	-----

DRAWN	A.CHENG	DATE	JAN12/06
DESIGNED			
CHECKED	K.LAMBIE	DATE	JAN12/06
I. E. APPRD.			
Q. A. APPRD.			
DWG. APPRD.			
ENG. REL. NO.			
REF.	EAR 12900		
DIMENSIONS ARE IN		CODE ID. NO.	
INCHES [mm]		03554	

**Amphenol Canada Corp.**

FCE17 SERIES FILTERED D-SUB CONNECTOR, PIN & SOCKET, VERTICAL MOUNT P.C.B. TAIL, .470 [11.94] FLANGE TO BOARD, RoHS COMPLIANT

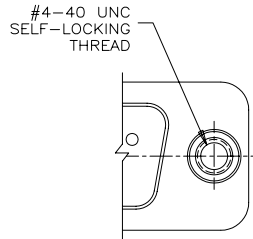
DWG	DRAWING NO.	REV.
C	P-FCE17-XXXXN-XXOX	A
SCALE	3/1	WT. -----
SURF.	-----	SHEET 1 of 2

THIS DOCUMENT CONTAINS PROPRIETARY INFORMATION AND SUCH INFORMATION MAY NOT BE DISCLOSED TO OTHERS FOR ANY PURPOSE OR USED FOR MANUFACTURING PURPOSES WITHOUT WRITTEN PERMISSION FROM AMPHENOL CANADA CORP.

SEE SHEET 2 FOR ADDITIONAL MOUNTING OPTIONS

REVISIONS			
REV	ECN, ERN NO.	DATE	APPRD.
A	PRODUCT DRAWING (EAR 12900)	JAN26/06	K.L.

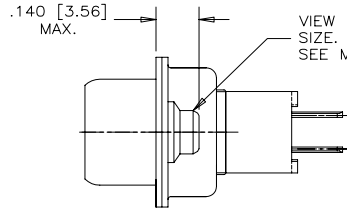
ADDITIONAL MOUNTING OPTIONS AVAILABLE  
FOR PIN OR SOCKET CONNECTOR



#4-40 UNC  
SELF-LOCKING  
THREAD

PARTIAL FRONT VIEW

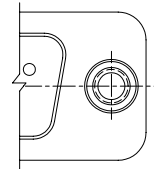
MOUNTING CODE 3



.140 [3.56]  
MAX.

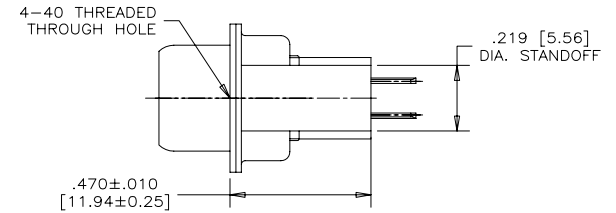
END VIEW

VIEW FOR E09, A15 & B25  
SIZE. FOR C37 SIZE VIEW  
SEE MOUNTING CODE 4, SHEET 1.



PARTIAL FRONT VIEW

MOUNTING CODE 5

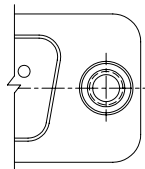


4-40 THREADED  
THROUGH HOLE

.470±.010  
[11.94±0.25]

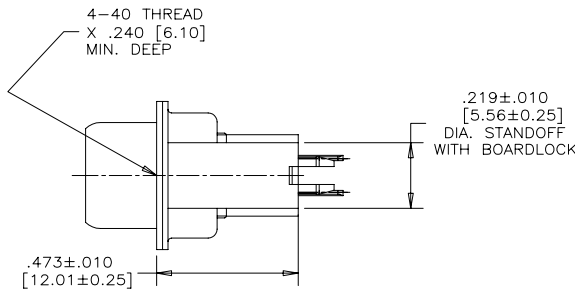
.219 [5.56]  
DIA. STANDOFF

END VIEW



PARTIAL FRONT VIEW

MOUNTING CODE A

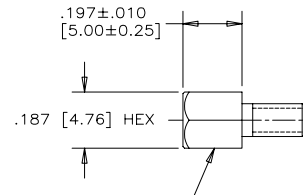


4-40 THREAD  
X .240 [6.10]  
MIN. DEEP

.219±.010  
[5.56±0.25]  
DIA. STANDOFF  
WITH BOARDLOCK

.473±.010  
[12.01±0.25]

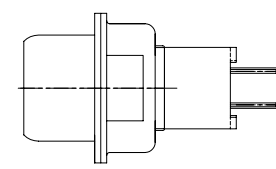
END VIEW



.197±.010  
[5.00±0.25]

.187 [4.76] HEX

MOUNTING CODE E  
#4-40 UNC THREADED  
HEX JACK SOCKET  
(2 SUPPLIED  
PER CONNECTOR)



END VIEW

MOUNTING CODE E

THIS DOCUMENT CONTAINS PROPRIETARY INFORMATION AND SUCH INFORMATION  
MAY NOT BE DISCLOSED TO OTHERS FOR ANY PURPOSE OR USED FOR MANUFACTURING  
PURPOSES WITHOUT WRITTEN PERMISSION FROM AMPHENOL CANADA CORP.

DRAWN	A.CHENG	DATE	JAN12/06	Amphenol Canada Corp.		
DESIGNED						
CHECKED	K.LAMBIE	DATE	JAN12/06			
I. E. APPRD.						
Q. A. APPRD.				FCE17 SERIES FILTERED D-SUB CONNECTOR, PIN & SOCKET, VERTICAL MOUNT P.C.B. TAIL, .470 [11.94] FLANGE TO BOARD, RoHS COMPLIANT		
DWG. APPRD.						
ENG. REL. NO.		DWG	DRAWING NO.	REV.		
REF.	EAR 12900	C	P-FCE17-XXXXN-XX0X	A		
DIMENSIONS ARE IN INCHES [mm]		SCALE	3/1	WT.	SURF.	SHEET 2 OF 2