



500mA CMOS LDO Regulator

FEATURES

- Guaranteed 500mA peak output current
- Low dropout voltage of 300mV typical at 500mA
- Stable with ceramic output capacitor
- External 10nF bypass capacitor for low noise
- Quick-start feature
- Under voltage lockout
- No-load ground current of 55µA typical
- Full-load ground current of 85µA typical
- ±1.0% initial accuracy ($V_{OUT} \geq 2.0V$)
- ±2.0% accuracy over temperature ($V_{OUT} \geq 2.0V$)
- “Zero” current shutdown mode
- Current limit and thermal protection
- 5-lead TSOT-23 and 6-pad TDFN packages

APPLICATIONS

- Cellular phones
- Battery-powered devices
- Consumer Electronics

DESCRIPTION

The CAT6219 is a 500mA CMOS low dropout regulator that provides fast response time during load current and line voltage changes.

The quick-start feature allows the use of an external bypass capacitor to reduce the overall output noise without affecting the turn-on time of just 150µs.

With zero shutdown current and low ground current of 55µA typical, the CAT6219 is ideal for battery-operated devices with supply voltages from 2.3V to 5.5V. An internal under voltage lockout circuit disables the output at supply voltages under 2.15V typical.

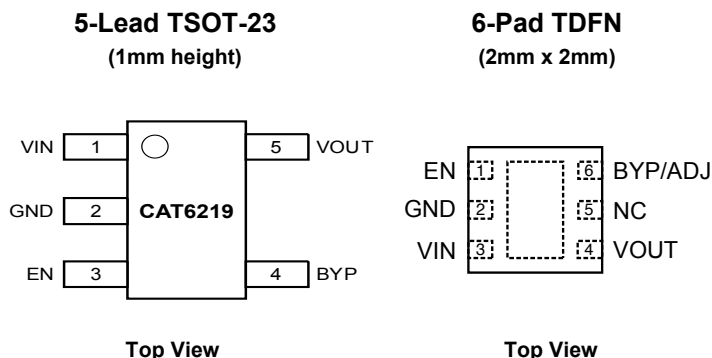
The CAT6219 offers 1% initial accuracy and low dropout voltage, 300mV typical at 500mA. Stable operation is provided with a small value ceramic capacitor, reducing required board space and component cost.

Other features include current limit and thermal protection.

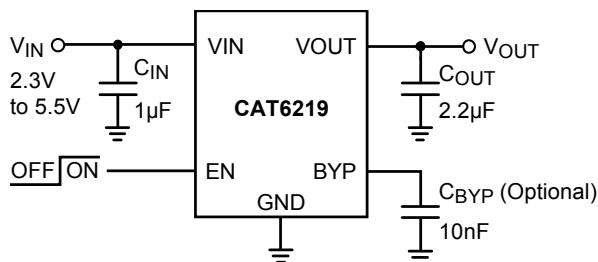
The LDO is available in fixed and adjustable output in the low profile (1mm max height) 5-lead TSOT23 and in the 6-pad 2mm x 2mm TDFN packages.

For Ordering Information details, see page 9.

PIN CONFIGURATION



TYPICAL APPLICATION CIRCUIT



PIN DESCRIPTIONS

| Pin # | Name | Function |
|-------|------|--|
| 1 | VIN | Supply voltage input. |
| 2 | GND | Ground reference. |
| 3 | EN | Enable input (active high); a 2.5MΩ pull-down resistor is provided. |
| 4 | BYP | Optional bypass capacitor connection for noise reduction and PSRR enhancing. |
| 4 | ADJ | Adjustable input. Feedback pin connected to resistor divider. |
| 5 | VOUT | LDO Output Voltage. |

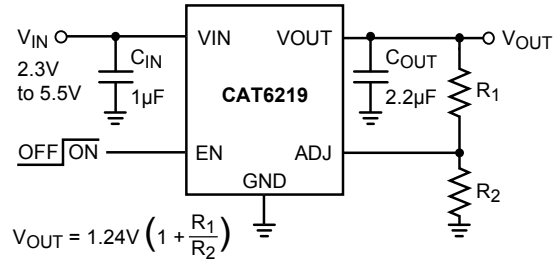


Figure 1. Adjustable Output LDO

PIN FUNCTION

VIN is the supply pin for the LDO. A small 1µF ceramic bypass capacitor is required between the VIN pin and ground near the device. When using longer connections to the power supply, CIN value can be increased without limit. The operating input voltage range is from 2.3V to 5.5V.

EN is the enable control logic (active high) for the regulator output. It has a 2.5MΩ pull-down resistor, which assures that if EN pin is left open, the circuit is disabled.

VOUT is the LDO regulator output. A small 2.2µF ceramic bypass capacitor is required between the VOUT pin and ground. For better transient response, its value can be increased to 4.7µF.

The capacitor should be located near the device. For the SOT23-5 package, a continuous 500mA output current may turn-on the thermal protection. A 250Ω internal shutdown switch discharges the output capacitor in the no-load condition.

GND is the ground reference for the LDO. The pin must be connected to the ground plane on the PCB.

BYP is the reference bypass pin. An optional 0.01µF capacitor can be connected between BYP pin and GND to reduce the output noise and enhance the PSRR at high frequency.

ADJ is the adjustable input pin for the adjustable LDO. The pin is connected to the resistor voltage divider.

ABSOLUTE MAXIMUM RATINGS ⁽¹⁾

| Parameter | Rating | Unit |
|--------------------------------------|-----------------------------------|------|
| VIN | 0 to 6.5 | V |
| VEN, VOUT | -0.3 to VIN+0.3 | V |
| Junction Temperature, TJ | +150 | °C |
| Power Dissipation, PD | Internally Limited ⁽²⁾ | mW |
| Storage Temperature Range, TS | -65 to +150 | °C |
| Lead Temperature (soldering, 5 sec.) | 260 | °C |
| ESD Rating (Human Body Model) | 3 | kV |

RECOMMENDED OPERATING CONDITIONS ⁽³⁾

| Parameter | Range | Unit |
|---|-------------|------|
| VIN | 2.3 to 5.5 | V |
| VEN | 0 to VIN | V |
| Junction Temperature Range, TJ | -40 to +125 | °C |
| Package Thermal Resistance (SOT23-5), θJA | 235 | °C/W |

Typical application circuit with external components is shown on page 1.

Notes:

- (1) Exceeding maximum rating may damage the device.
- (2) The maximum allowable power dissipation at any TA (ambient temperature) is $P_{Dmax} = (T_{Jmax} - T_A) / \theta_{JA}$. Exceeding the maximum allowable power dissipation will result in excessive die temperature, and the regulator will go into thermal shutdown.
- (3) The device is not guaranteed to work outside its operating rating.

ELECTRICAL OPERATING CHARACTERISTICS ⁽¹⁾

$V_{IN} = V_{OUT} + 1.0V$, $V_{EN} = \text{High}$, $I_{OUT} = 100\mu A$, $C_{IN} = 1\mu F$, $C_{OUT} = 2.2\mu F$, ambient temperature of $25^{\circ}C$ (over recommended operating conditions unless specified otherwise). **Bold numbers** apply for the entire junction temperature range.

| Symbol | Parameter | Conditions | Min | Typ | Max | Unit |
|---------------------------|--|--|-------------|-----------|-------------|------------------|
| $V_{OUT-ACC}$ | Output Voltage Accuracy | Initial accuracy for $V_{OUT} \geq 2.0V$ ⁽⁴⁾ | -1.0 | | +1.0 | % |
| | | | -2.0 | | +2.0 | |
| TC_{OUT} | Output Voltage Temp. Coefficient | | | 40 | | ppm/ $^{\circ}C$ |
| V_{R-LINE} | Line Regulation | $V_{IN} = V_{OUT} + 1.0V$ to 5.5V | -0.2 | ± 0.1 | +0.2 | %/V |
| | | | -0.4 | | +0.4 | |
| V_{R-LOAD} | Load Regulation | $I_{OUT} = 100\mu A$ to 500 mA | | 1 | 1.5 | % |
| | | | | | 2 | |
| V_{DROP} | Dropout Voltage ⁽²⁾ | $I_{OUT} = 500mA$ | | 300 | 400 | mV |
| | | | | | 500 | |
| I_{GND} | Ground Current | $I_{OUT} = 0\mu A$ | | 55 | 75 | μA |
| | | $I_{OUT} = 500mA$ | | 85 | | |
| I_{GND-SD} | Shutdown Ground Current | $V_{EN} < 0.4V$ | | | 1 | μA |
| | | | | | 2 | |
| PSRR | Power Supply Rejection Ratio | $f = 1kHz$, $C_{BYP} = 10nF$ | | 64 | | dB |
| | | $f = 20kHz$, $C_{BYP} = 10nF$ | | 54 | | |
| I_{SC} | Output short circuit current limit | $V_{OUT} = 0V$ | 600 | 800 | | mA |
| T_{ON} | Turn-On Time | $C_{BYP} = 10nF$ | | 150 | | μs |
| e_N | Output Noise Voltage ⁽³⁾ | $BW = 10Hz$ to 100kHz | | 45 | | μV_{rms} |
| R_{OUT-SH} | Shutdown Switch Resistance | | | 250 | | Ω |
| R_{EN} | Enable pull-down resistor | | | 2.5 | | $M\Omega$ |
| $V_{IN-UVLO}$ | Under voltage lockout threshold | | | 2.15 | | V |
| ESR | C_{OUT} equivalent series resistance | | 5 | | 500 | $m\Omega$ |
| V_{ADJ} | Adjustable input voltage | $I_{OUT} = 100\mu A$ | 1.2 | 1.24 | 1.27 | V |
| Enable Input | | | | | | |
| V_{HI} | Logic High Level | $V_{IN} = 2.3$ to 5.5V | 1.8 | | | V |
| | | $V_{IN} = 2.3$ to 5.5V, $0^{\circ}C$ to $+125^{\circ}C$ junction temperature | 1.6 | | | |
| V_{LO} | Logic Low Level | $V_{IN} = 2.3$ to 5.5V | | | 0.4 | V |
| I_{EN} | Enable Input Current | $V_{EN} = 0.4V$ | | 0.15 | 1 | μA |
| | | $V_{EN} = V_{IN}$ | | 1.5 | 4 | |
| Thermal Protection | | | | | | |
| T_{SD} | Thermal Shutdown | | | 160 | | $^{\circ}C$ |
| T_{HYS} | Thermal Hysteresis | | | 10 | | $^{\circ}C$ |

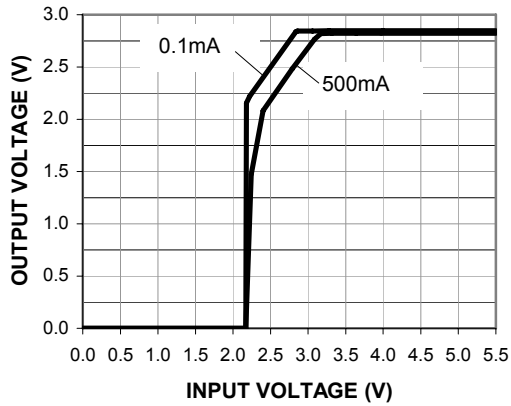
Notes:

- (1) Specification for 2.85V output version unless specified otherwise.
- (2) Dropout voltage is defined as the input-to-output differential at which the output voltage drops 2% below its nominal value measured at 1V differential. During test, the input voltage stays always above the minimum 2.3V.
- (3) Specification for 1.8V output version.
- (4) For $V_{OUT} < 2.0V$, the initial accuracy is $\pm 2\%$ and across temperature $\pm 3\%$.

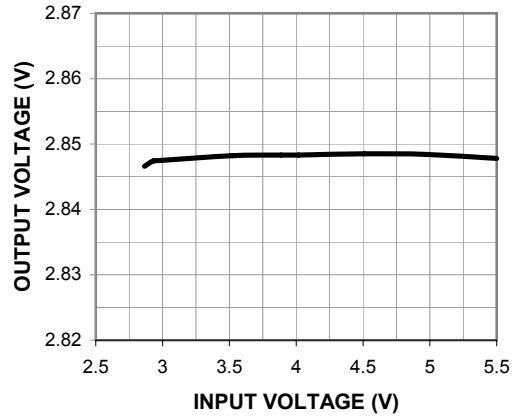
TYPICAL CHARACTERISTICS (shown for 2.85V output version)

$V_{IN} = 3.85V$, $I_{OUT} = 100\mu A$, $C_{IN} = 1\mu F$, $C_{OUT} = 2.2\mu F$, $C_{BYP} = 10nF$, $T_A = 25^\circ C$ unless otherwise specified.

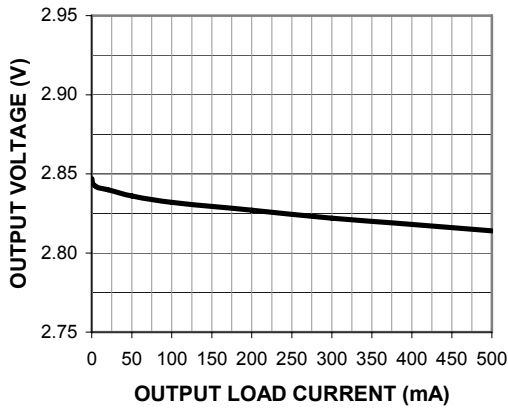
Dropout Characteristics



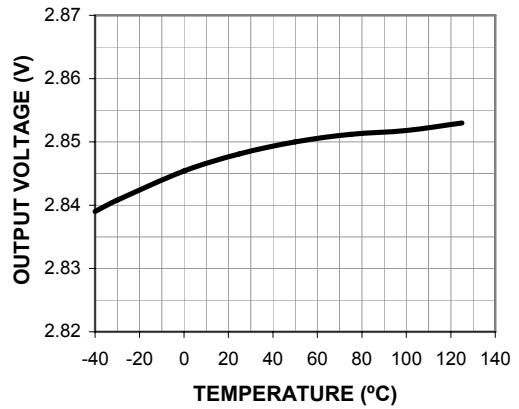
Line Regulation



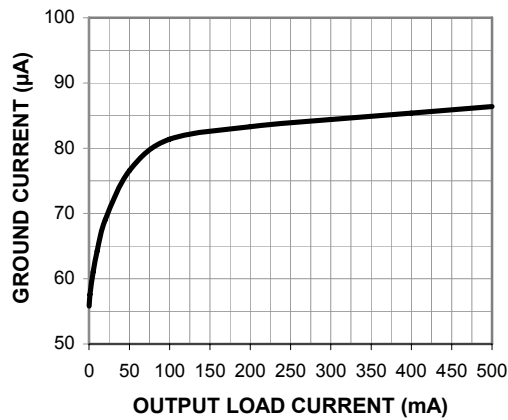
Load Regulation



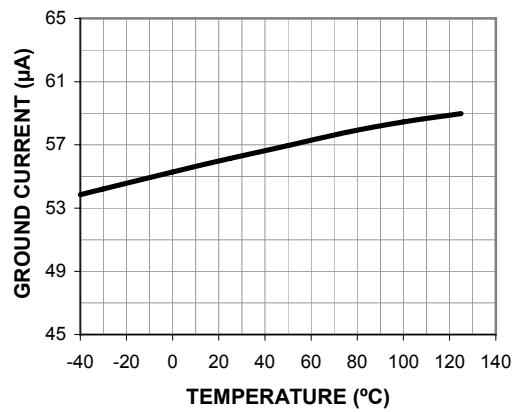
Output Voltage vs. Temperature



Ground Current vs. Load Current



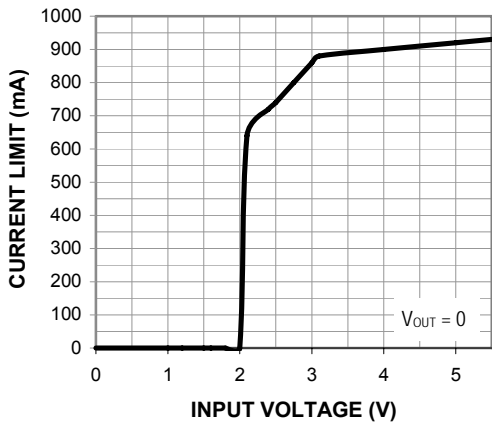
Ground Current vs. Temperature



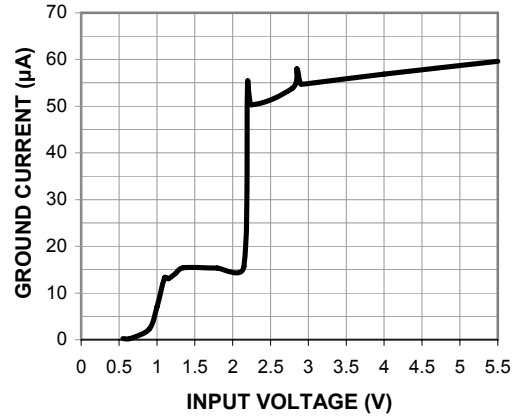
TYPICAL CHARACTERISTICS (shown for 2.85V output option)

$V_{IN} = 3.85V$, $I_{OUT} = 100\mu A$, $C_{IN} = 1\mu F$, $C_{OUT} = 2.2\mu F$, $C_{BYP} = 10nF$, $T_A = 25^\circ C$ unless otherwise specified.

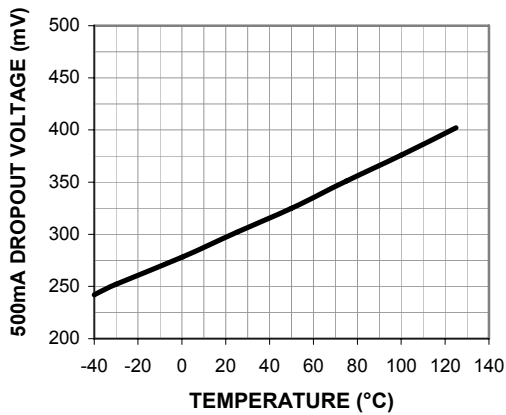
Output Short-circuit Current vs. Input Voltage



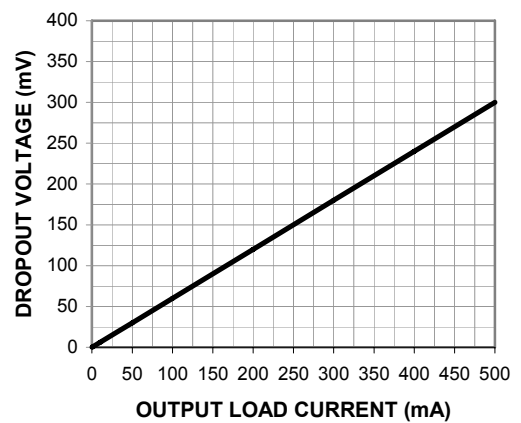
Ground Current vs. Input Voltage



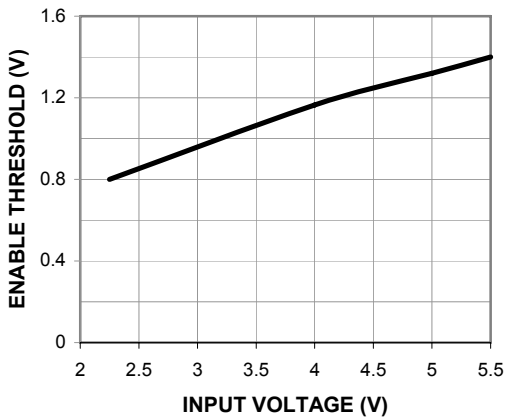
Dropout vs. Temperature (500mA Load)



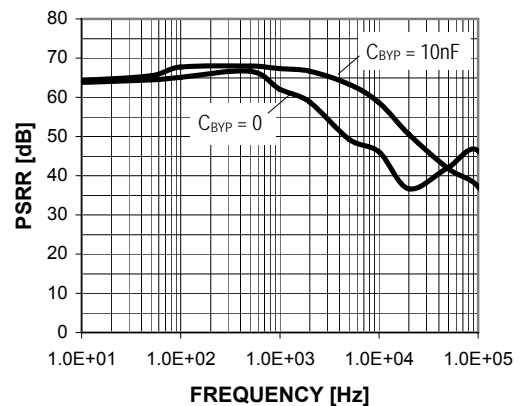
Dropout vs. Load Current



Enable Threshold vs. Input Voltage

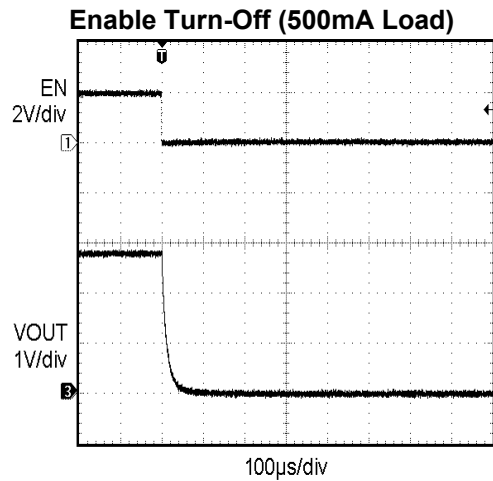
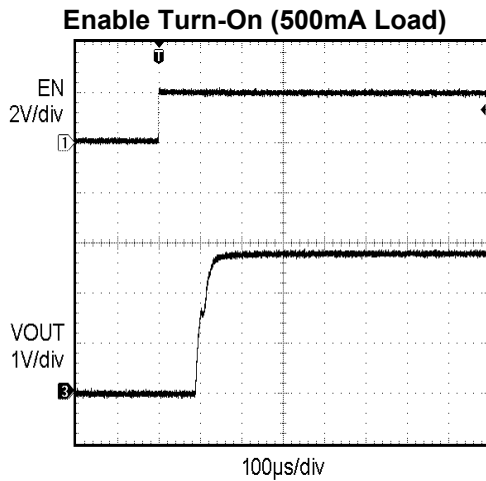
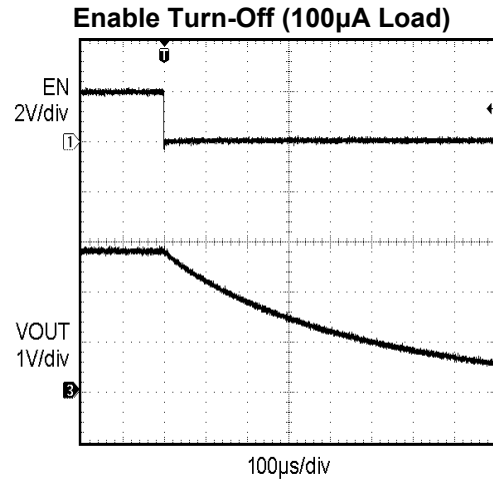
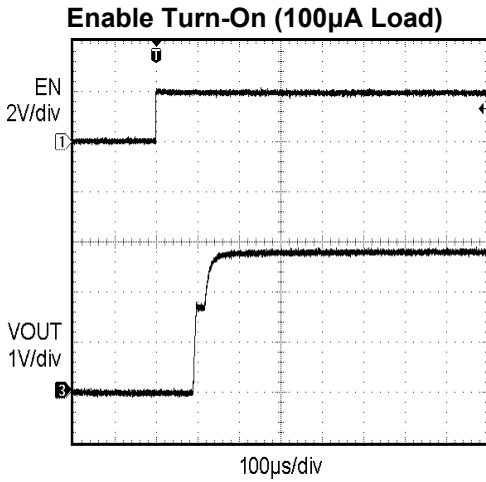


PSRR vs. Frequency (10mA Load)

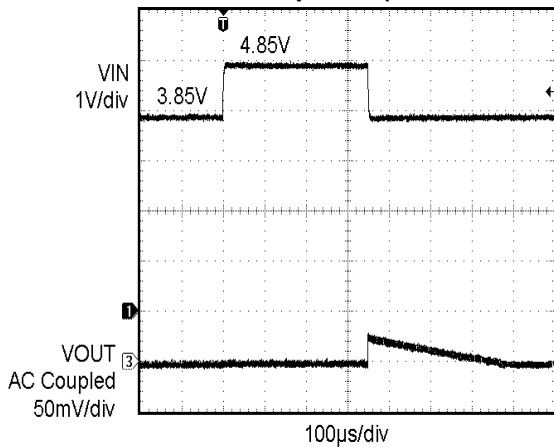


TRANSIENT CHARACTERISTICS (shown for 2.85V output option)

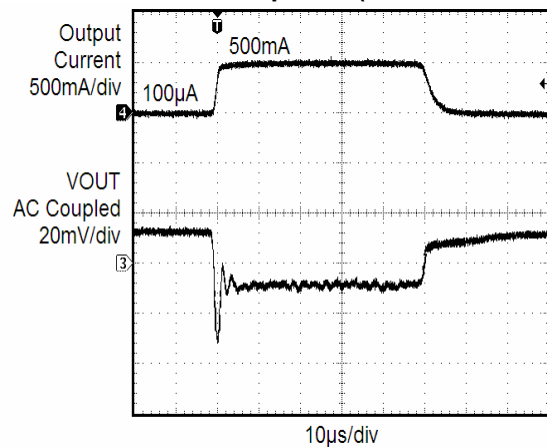
$V_{IN} = 3.85V$, $I_{OUT} = 100\mu A$, $C_{IN} = 1\mu F$, $C_{OUT} = 2.2\mu F$, $C_{BYP} = 10nF$, $T_A = 25^\circ C$ unless otherwise specified.



Line Transient Response (3.85V to 4.85V)

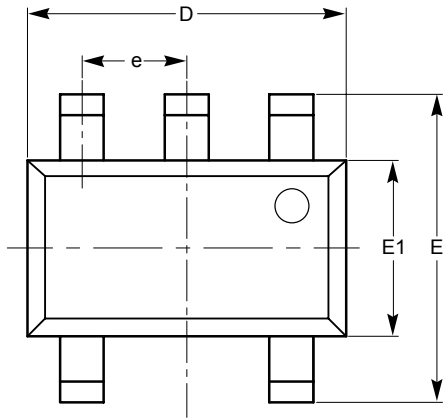


Load Transient Response (0.1mA to 500mA)



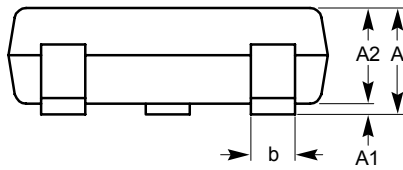
PACKAGE OUTLINE DRAWINGS

TSOT-23 5-Lead (TD) ⁽¹⁾⁽²⁾

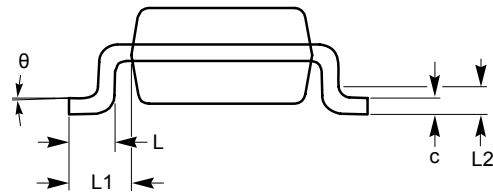


TOP VIEW

| SYMBOL | MIN | NOM | MAX |
|----------|----------|------|------|
| A | | | 1.00 |
| A1 | 0.01 | 0.05 | 0.10 |
| A2 | 0.80 | 0.87 | 0.90 |
| b | 0.30 | | 0.45 |
| c | 0.12 | 0.15 | 0.20 |
| D | 2.90 BSC | | |
| E | 2.80 BSC | | |
| E1 | 1.60 BSC | | |
| e | 0.95 TYP | | |
| L | 0.30 | 0.40 | 0.50 |
| L1 | 0.60 REF | | |
| L2 | 0.25 BSC | | |
| θ | 0° | | 8° |



SIDE VIEW



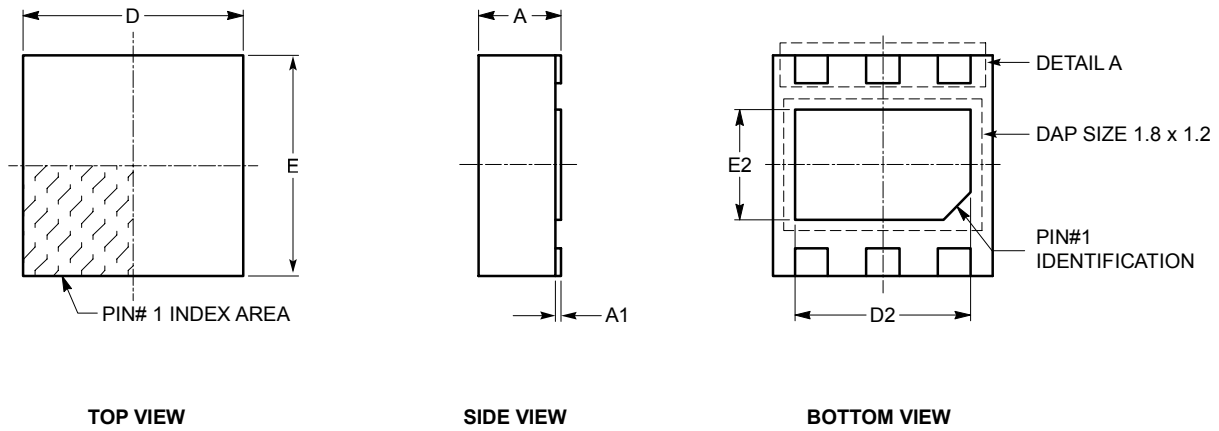
END VIEW

For current Tape and Reel information, download the PDF file from:
<http://www.catsemi.com/documents/tapeand reel.pdf>.

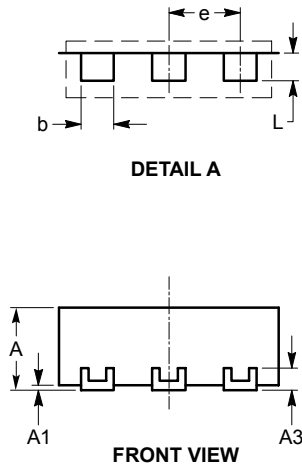
Notes:

- (1) All dimensions are in millimeters. Angles in degrees.
- (2) Complies with JEDEC standard MO-193.

TDFN 6-Pad 2mm x 2mm (VP5) ⁽¹⁾⁽²⁾



| SYMBOL | MIN | NOM | MAX |
|--------|----------|------|------|
| A | 0.70 | 0.75 | 0.80 |
| A1 | 0.00 | 0.02 | 0.05 |
| A3 | 0.20 REF | | |
| b | 0.25 | 0.30 | 0.35 |
| D | 1.90 | 2.00 | 2.10 |
| D2 | 1.50 | 1.60 | 1.70 |
| E | 1.90 | 2.00 | 2.10 |
| E2 | 0.90 | 1.00 | 1.10 |
| e | 0.65 TYP | | |
| L | 0.15 | 0.25 | 0.35 |

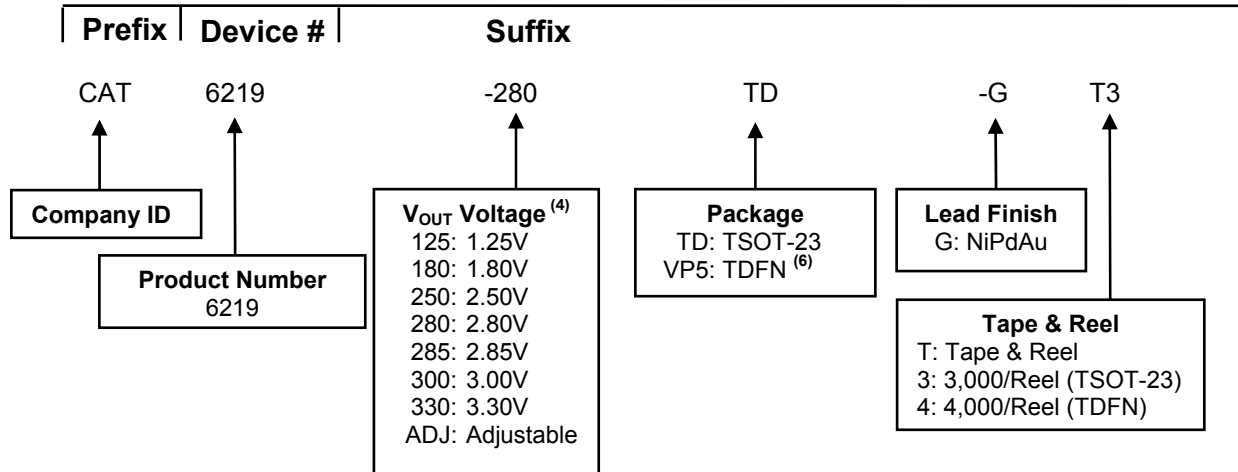


For current Tape and Reel information, download the PDF file from:
<http://www.catsemi.com/documents/tapeandreel.pdf>.

Notes:

- (1) All dimensions are in millimeters.
- (2) Complies with JEDEC standard MO-229.

EXAMPLE OF ORDERING INFORMATION



| Ordering Number | V _{OUT} Voltage ⁽⁵⁾ | Package | Quantity per Reel |
|----------------------------------|---|-----------|-------------------|
| CAT6219-125TD-GT3 | 1.25V | TSOT-23-5 | 3,000 |
| CAT6219-180TD-GT3 | 1.80V | TSOT-23-5 | 3,000 |
| CAT6219-250TD-GT3 | 2.50V | TSOT-23-5 | 3,000 |
| CAT6219-280TD-GT3 | 2.80V | TSOT-23-5 | 3,000 |
| CAT6219-285TD-GT3 ⁽⁴⁾ | 2.85V | TSOT-23-5 | 3,000 |
| CAT6219-300TD-GT3 | 3.00V | TSOT-23-5 | 3,000 |
| CAT6219-330TD-GT3 | 3.30V | TSOT-23-5 | 3,000 |
| CAT6219-ADJTD-GT3 | 1.25V to 5V | TSOT-23-5 | 3,000 |
| CAT6219-330VP5-GT4 | 3.30V | TDFN-6 | 4,000 |


For Product Top Mark Codes, click here:
<http://www.catsemi.com/techsupport/producttopmark.asp>

Notes:

- (1) All packages are RoHS-compliant (Lead-free, Halogen-free).
- (2) The standard lead finish is NiPdAu pre-plated (PPF) lead frames.
- (3) The device used in the above example is a CAT6219-280TD-GT3 (V_{OUT} = 2.80V, in a TSOT-23 package, NiPdAu, Tape & Reel, 3,000/Reel).
- (4) Standard voltages are 1.80V, 2.80V and 3.30V. For other voltage options, please contact your nearest ON Semiconductor Sales office.
- (5) All output voltage options have the same marking.
- (6) Contact factory for availability.
- (7) Package Marking for CAT6219 family is "RV."

REVISION HISTORY

| Date | Rev. | Reason |
|-----------|------|---|
| 20-Apr-07 | A | Initial Release |
| 07-Nov-07 | B | Update Package Outline Drawings Update Example of Ordering Information Add "MD-" to Document Number |
| 08-Feb-08 | C | Update Electrical Operating Characteristics |
| 20-May-08 | D | Add Adjustable and other voltage options Update Package Outline Drawing – TDFN 6-Pad Add link to Top Mark Codes |
| 19-Nov-08 | E | Change logo and fine print to ON Semiconductor |

ON Semiconductor and  are registered trademarks of Semiconductor Components Industries, LLC (SCILLC). SCILLC reserves the right to make changes without further notice to any products herein. SCILLC makes no warranty, representation or guarantee regarding the suitability of its products for any particular purpose, nor does SCILLC assume any liability arising out of the application or use of any product or circuit, and specifically disclaims any and all liability, including without limitation special, consequential or incidental damages. "Typical" parameters which may be provided in SCILLC data sheets and/or specifications can and do vary in different applications and actual performance may vary over time. All operating parameters, including "Typicals" must be validated for each customer application by customer's technical experts. SCILLC does not convey any license under its patent rights nor the rights of others. SCILLC products are not designed, intended, or authorized for use as components in systems intended for surgical implant into the body, or other applications intended to support or sustain life, or for any other application in which the failure of the SCILLC product could create a situation where personal injury or death may occur. Should Buyer purchase or use SCILLC products for any such unintended or unauthorized application, Buyer shall indemnify and hold SCILLC and its officers, employees, subsidiaries, affiliates, and distributors harmless against all claims, costs, damages, and expenses, and reasonable attorney fees arising out of, directly or indirectly, any claim of personal injury or death associated with such unintended or unauthorized use, even if such claim alleges that SCILLC was negligent regarding the design or manufacture of the part. SCILLC is an Equal Opportunity/Affirmative Action Employer. This literature is subject to all applicable copyright laws and is not for resale in any manner.

PUBLICATION ORDERING INFORMATION

LITERATURE FULFILLMENT:

Literature Distribution Center for ON Semiconductor
P.O. Box 5163, Denver, Colorado 80217 USA
Phone: 303-675-2175 or 800-344-3860 Toll Free USA/Canada
Fax: 303-675-2176 or 800-344-3867 Toll Free USA/Canada
Email: orderlit@onsemi.com

N. American Technical Support: 800-282-9855 Toll Free
USA/Canada
Europe, Middle East and Africa Technical Support:
Phone: 421 33 790 2910
Japan Customer Focus Center:
Phone: 81-3-5773-3850

ON Semiconductor Website: www.onsemi.com

Order Literature: <http://www.onsemi.com/orderlit>

For additional information, please contact your local Sales Representative