

LC adapters

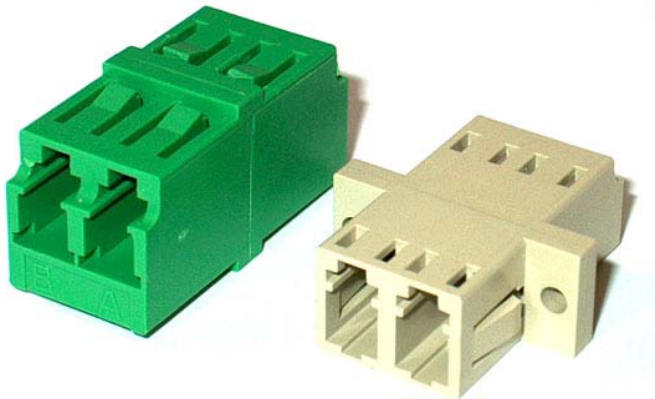
Description:

The innovative LC design offers a form factor one-half the size of current industry standards, and simple features create a new definition of user-friendliness.

The LC meet EIA/TIA 568A, FOCIS 10 and IEC 11801 specifications for optical performance and intermateability. The LC Duplex fits into the RJ-45 standard cutout.

Two different versions are available:

- square mounting hole
- rectangle mounting hole (SC standard)



Features:

- Duplex fits RJ-45 footprint
- Increases panel density
- Symmetrical design allows four different panel orientations

Application:

- Telecom
- LAN, WAN
- CATV
- Sensor systems
- Measuring Technique
- Utilities
- Railways

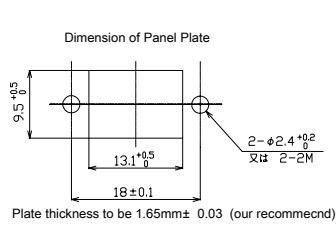
Ordering code:

A - LC (-D) / (A)PC - XX - XX XX

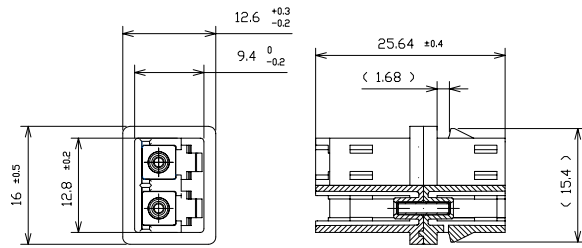
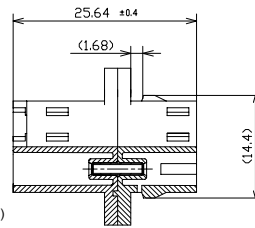
type	sleeve	body
LC simplex	01 zirconia	02 square
LC -D duplex	02 phosphor bronze	03 rectangle with flange
LC -Q quadruple		04 rectangle without flange
		BL blue (SM)
		GR green (SM-APC)
		BG beige (MM)

LC® is trademark of Lucent Technologies, Inc.

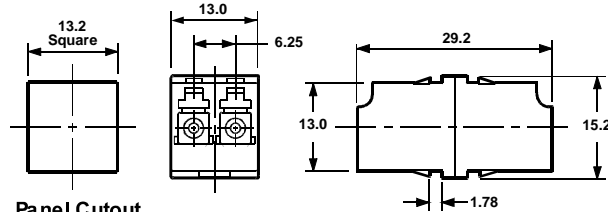
Dimensions:



A-LC-D/(A)PC-XX-03-XX



A-LC-D/(A)PC-XX-04-XX



Panel Cutout

A-LC-D/(A)PC-XX-02-XX

Samples of Adapters



A-LC-D/PC-01-02 BL



A-LC-D/APC-01-02 GR



A-LC-D/PC-02-02 BG



A-LC-Q/PC-02-03 BG



A-LC-D/PC-02-03 BG



Dust cap