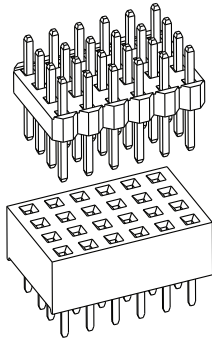


RoHS



## K200P4X/S4 Series

### 2.0MM 4 Row PCB Socket & Pin Header

### Features

- Four row Header and Socket offered
- 0.079" spacing for real estate savings
- Multiple stack height options
- Circuit sizes range from 12-120

### Performance Specifications

#### Material and Finish

**Housing** : High Temp plastic (UL94V-0)

**Contact** : Copper Alloy

**Plated** : Gold Plated

#### Electrical Characteristics

**Current Rating** : 2.0A AC/DC

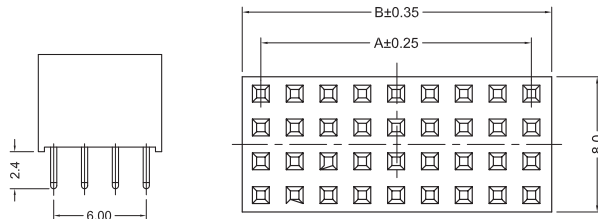
**Voltage Rating** : 250V AC/DC

**Resistance** : 20m ohm.max.

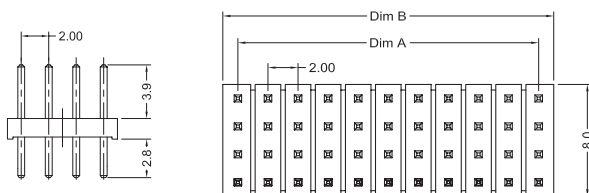
**Insulation Resistance** : 1000M ohm.Min.

**Withstanding Voltage** : 500V AC for one minute

**Operating Temperature Range** : -40°C to +105°C



K200S4X - 2.0 4 Row PCB Socket Header



K200P4X - 2.0 4 Row PCB Pin Header

## 2.0MM 4 Row PCB Pin & Socket Header

### K200P4X/S4X Series

#### Documentation & Ordering Information


**Kycon Part #**

#### Part Number Builder



#### Series

K200P4X - 2.0 4 Row PCB Pin Header

K200S4X - 2.0 4 Row PCB Socket Header

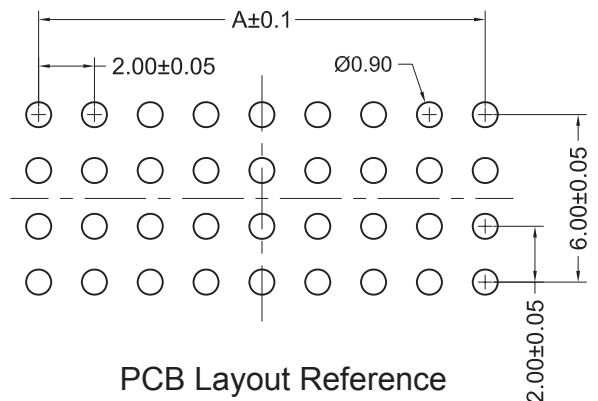
#### Number of Contacts

No. of Contacts	Dimensions		No. of Contacts	Dimensions	
	A	B		A	B
12	4.00	6.30	68	32.00	34.30
16	6.00	8.30	72	34.00	36.30
20	8.00	10.30	76	36.00	38.30
24	10.00	12.30	80	38.00	40.30
28	12.00	14.30	84	40.00	42.30
32	14.00	16.30	88	42.00	44.30
36	16.00	18.30	92	44.00	46.30
40	18.00	20.30	96	46.00	48.30
44	20.00	22.30	100	48.00	50.30
48	22.00	24.30	104	50.00	52.30
52	24.00	26.30	108	52.00	54.30
56	26.00	28.30	112	54.00	56.30
60	28.00	30.30	116	56.00	58.30
64	30.00	32.30	120	58.00	60.30

#### Plating

G - Gold

Contact Kycon for more options



PCB Layout Reference