

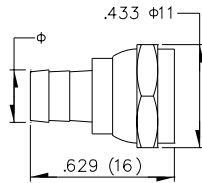
# F Series



## MF01

RG58/U RG59/U RG6/U 7C2V

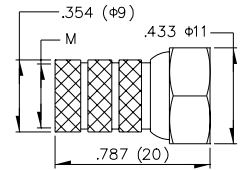
F CONNECTOR WITH RING



## MF10

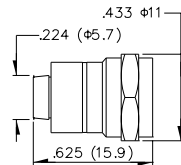
RG58/U RG59/U RG6/U 7C2V

F MALE TWIST ON



## MF02

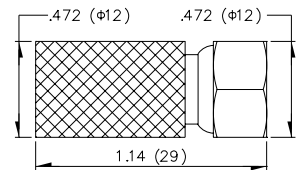
F WITH ATTACHED CRIMP RING (F56)



## MF11

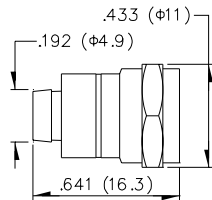
RG213/U

F MALE TWIST ON



## MF03

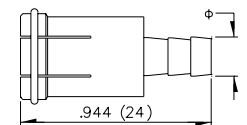
F WITH ATTACHED CRIMP RING (F59)



## MF12

RG59/U RG6/U

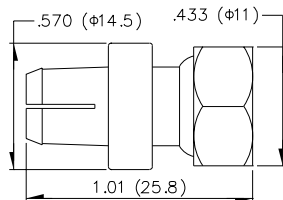
F MALE PUSH ON



## MF05

RG213/U/7C

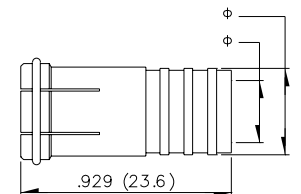
F CONNECTOR WITH RING



## MF15

RG59/U RG6/U

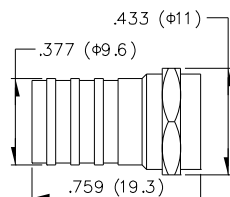
F PUSH ON WITH ATTACHED GRIP RING



## MF06

RG59/U RG6/U

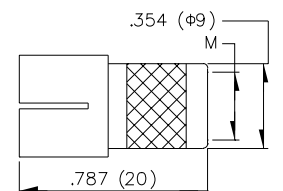
F CONNECTOR



## MF17

RG59/U

F TWIST ON

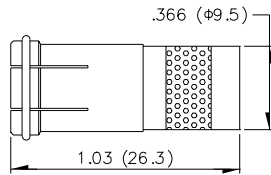


# F Series

## MF18

RG59/U RG6/U

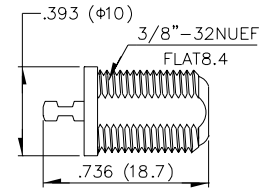
F PUSH ON



## MF23

With washer & nuts W/O washer & nuts

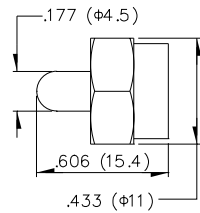
F FEMALE BULKHEAD



## MF19

750HM

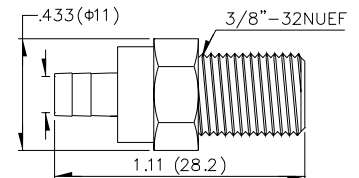
F MALE TERMINATOR (DUMMY LOAD)



## MF25

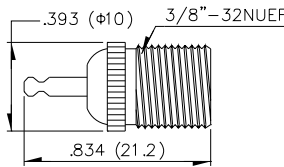
RG58/U RG59/U RG6/U RG174/U

F FEMALE CRIMP



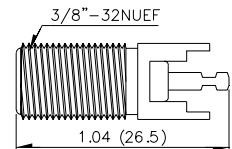
## MF20

F FEMALE BULKHEAD



## MF28

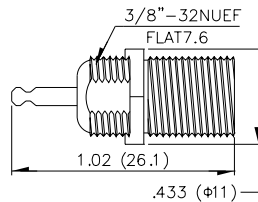
F FEMALE PC MOUNT



## MF21

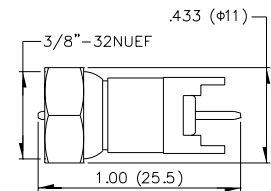
With washer & nuts W/O washer & nuts

F FEMALE BULKHEAD (F61)



## MF29M

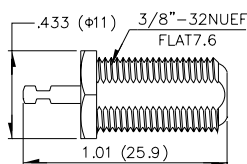
F MALE PC MOUNT



## MF22

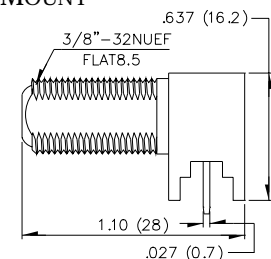
With washer & nuts W/O washer & nuts

F FEMALE BULKHEAD



## MF30

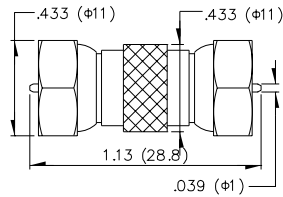
F RIGHT ANGLE FEMALE PC MOUNT



# F Series

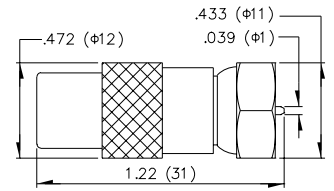
## MF34

F MALE TO MALE



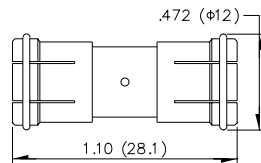
## MF38

F MALE TO PAL MALE



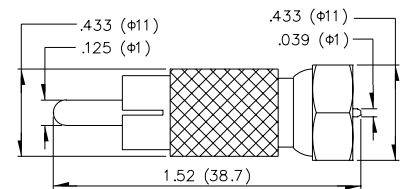
## MF34M

F DOUBLE PUSH ON MALE



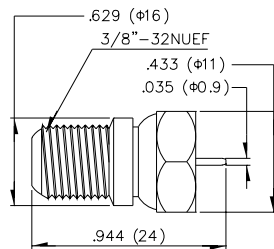
## MF39

F MALE TO RCA MALE



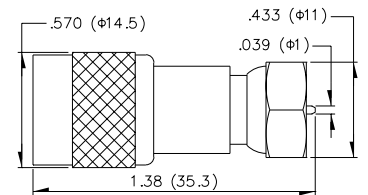
## MF35

F MALE TO F FEMALE



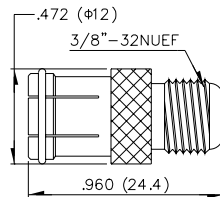
## MF40

F MALE TO TNC MALE



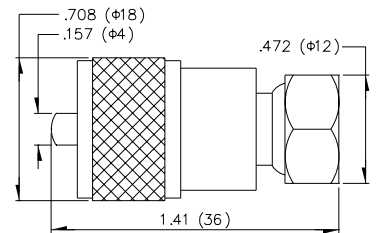
## MF36

F PUSH ON MALE TO F FEMALE



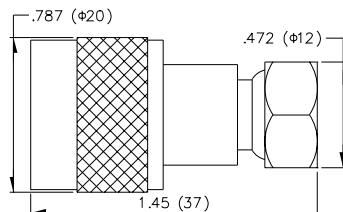
## MF41

F MALE TO UHF MALE



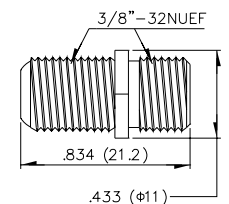
## MF37

F MALE TO N MALE



## MF42

F DOUBLE FEMALE (F81)

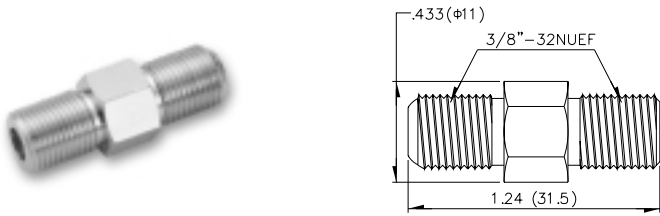


With washer & nuts    W/O washer & nuts

# F Series

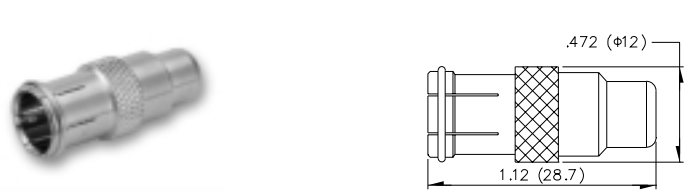
## MF42XL

F DOUBLE FEMALE (F81)



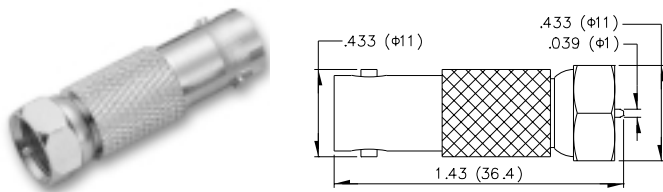
## MF46

F PUSH ON MALE TO RCA FEMALE



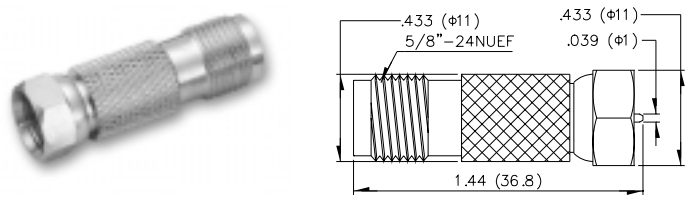
## MF43

F MALE TO BNC FEMALE



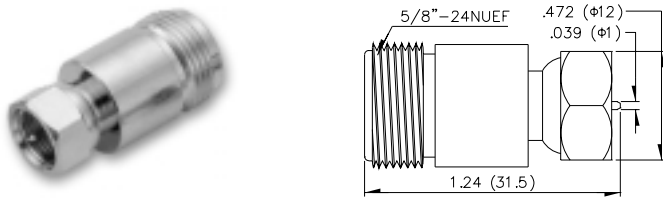
## MF47

F MALE TO TNC FEMALE



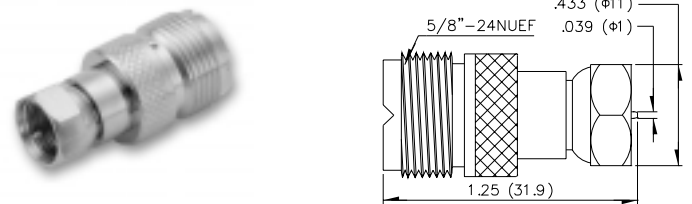
## MF44

F MALE TO N FEMALE



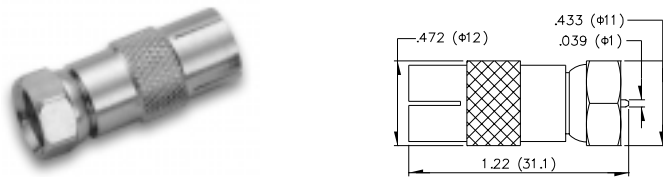
## MF48

F MALE TO UHF FEMALE



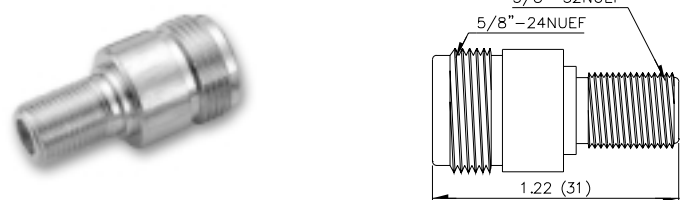
## MF45

F MALE TO PAL FEMALE



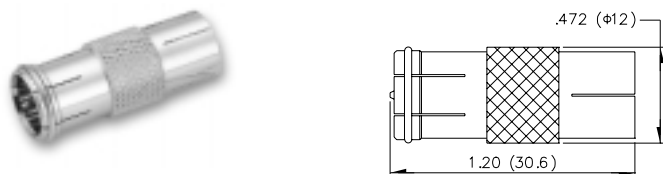
## MF49

F FEMALE TO N FEMALE



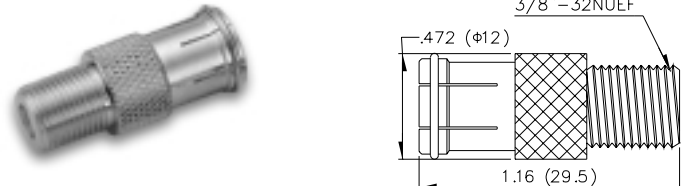
## MF45M

F PUSH ON MALE TO PAL FEMALE



## MF50

F FEMALE TO PAL PUSH ON FEMALE

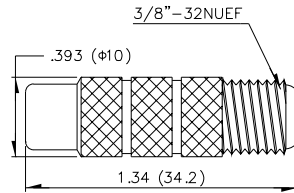


# F Series



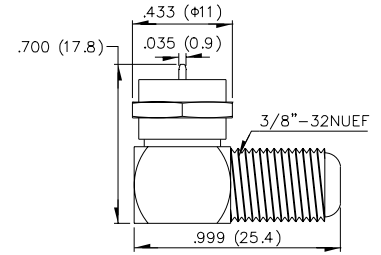
## MF51

F FEMALE TO RCA FEMALE



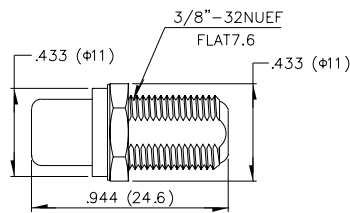
## MF55

F RIGHT ANGLE MALE TO F FEMALE



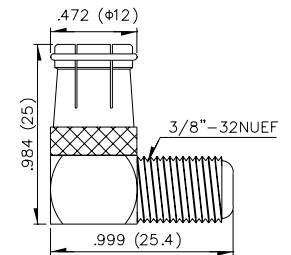
## MF51M

F FEMALE TO RCA FEMALE



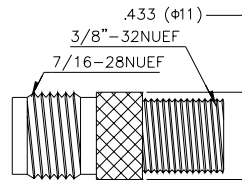
## MF56

F RIGHT ANGLE PUSH ON MALE TO F FEMALE



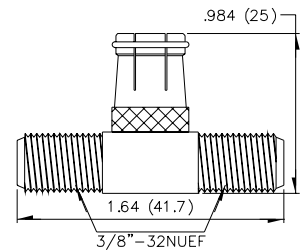
## MF52

F FEMALE TO TNC FEMALE



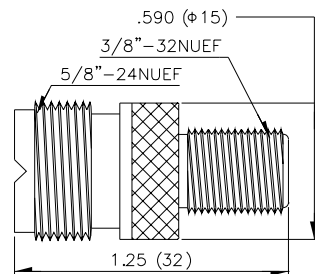
## MF57A

F PUSH ON MALE DOUBLE F FEMALE



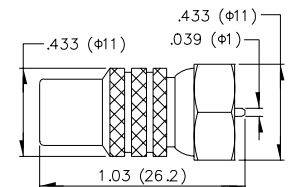
## MF53

F FEMALE TO UHF FEMALE



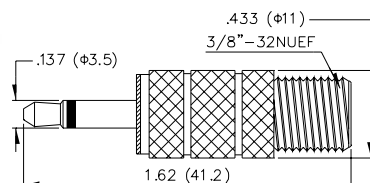
## MF58

F MALE TO RCA FEMALE



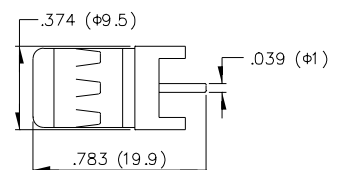
## MF54

F FEMALE TO 3.5 MO MALE



## MF60

F FEMALE PC BOARD MOUNT



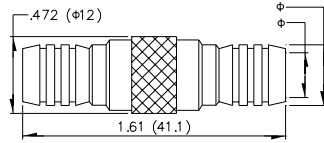
# F Series



## MF61

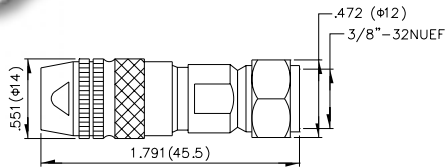
RG59/U RG6/U

F CONNECTORS



## MF63

F MALE CLAMP



## MF64

F FEMALE

