

MODS-A-6PXC-X-R

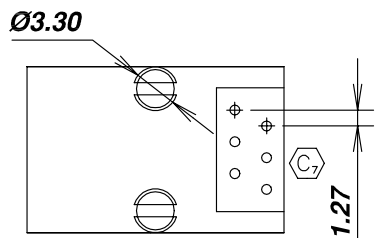
TYPE ————
-A

POSITIONS/CONTACTS ————
-6P4C: 6 Pos/4 Con
-6P6C: 6 Pos/6 Con

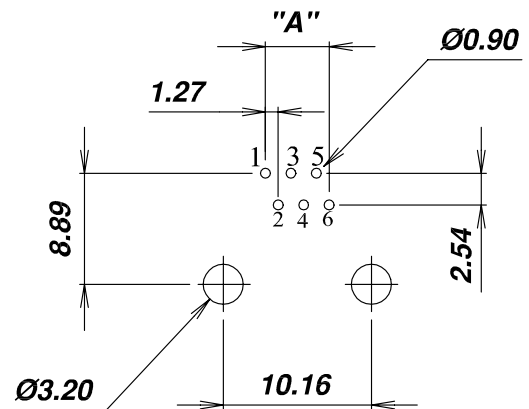
C_5 PLATING ————
-G: .000015" Au
-H: .000030" Au
-E: .000050" Au
(SEE NOTE 2)

-R: RoHS COMPLIANT ————

F




POS / CONTACTS	'A'
-6P4C	3.81
-6P6C	6.35



PCB LAYOUT

NOTES:

1. C_x REPRESENTS A CRITICAL DIMENSION
2. PLATING APPLIES TO MATING AREA, GOLD FLASH ON TAILS.
3. PART IS RoHS COMPLIANT.

UNLESS OTHERWISE SPECIFIED, DIMENSIONS ARE IN MM. TOLERANCES ARE: DECIMALS ANGLES X.XX±0.25 ±3 X.XXX±0.13 X.XXXX±0.05	PROPRIETARY NOTE THIS DOCUMENT CONTAINS INFORMATION CONFIDENTIAL AND PROPRIETARY TO SAMTEC INC. AND SHALL NOT BE REPRODUCED OR TRANSFERRED TO OTHER DOCUMENTS OR DISCLOSED TO OTHERS OR USED FOR ANY PURPOSE OTHER THAN THAT FOR WHICH IT WAS OBTAINED WITHOUT THE EXPRESSED WRITTEN CONSENT OF SAMTEC INC.	 520 PARK EAST BLVD. NEW ALBANY, IN 47150 (812) 944-6733 P.O. BOX 1147 TWX: 810-540-4085	CODE: 55322