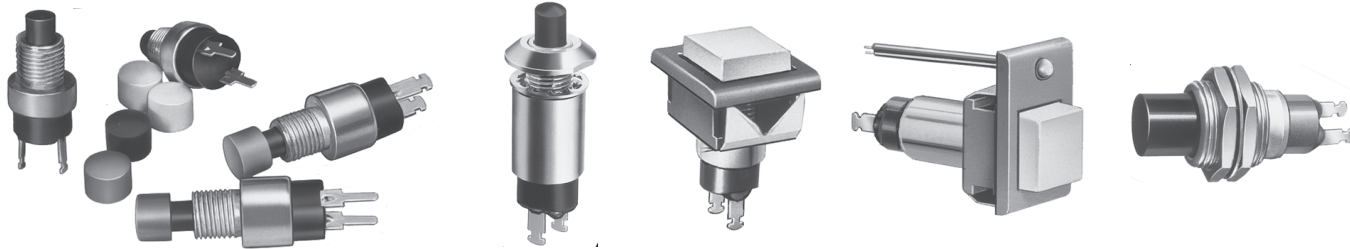


## 300 & 400 SERIES - MINIATURE PUSHBUTTON SWITCHES



C

### FEATURES

- Dry circuit through power ratings .
- Compact size SPST momentary and alternate action models with numerous options.
- Panel, panel & p.c. and p.c. mounting models, lighted and unlighted.

### SPECIFICATIONS

#### Contact ratings & life:

(Q) power models - coin silver: 1 Amp at 125 VAC or 28 VDC or 0.5 Amps at 250 VAC - electric life 250,000 cycles min. 3 Amps at 125 VAC or 28 VDC, or 1.5 Amps at 250 VAC - electric life 10,000 cycles min. (All previous loads are resistive).

(B) dry circuit models - gold over nickel over brass: 0.4 VA max. at 20 V max. - electric life 250,000 cycles min.

UL models - coin silver: 1 Amp at 125 VAC or 0.5 Amps at 250 VAC (75% power factor). UL file no. E66367.

#### Initial contact resistance:

10 milliohms max. at 3 VDC, 0.1 Amp.

#### Insulation resistance:

Greater than 10,000 megohms.

#### Dielectric strength:

1000 Volts RMS min. at sea level.

#### Operating temperature range:

-30°C to +85°C

### MATERIALS

#### Contacts:

Coin silver for power & UL models. Gold over nickel over brass for dry circuit models.

#### Actuator:

Nylon. Black color is standard for 300 Series. White is standard for 400 Series.

#### Bushing:

Nickel plated brass

#### Base:

Melamine phenolic, color red.

#### Terminal seal:

Epoxy (standard)

#### Support bracket:

Brass or steel, tin plated

#### Spring mounting bracket:

Stainless steel

#### Bezel & cap:

Nylon. Available in black, red or white. Consult factory for other colors.

#### Hardware:

See Miscellaneous section.

#### LED:

Intensity: 2.0 mcd at 10 mA. Forward voltage: 2.0V (3.0V max.). Max. continuous forward current: 30 mA at 25°C. Red standard - yellow & green are optional. Specifications are subject to change without notice - consult factory.

### AGENCY RECOGNITION



UL Marking: Switches ordered with 'UL' added at end of model no. are supplied with recognized mark.

### ABOUT THIS SERIES

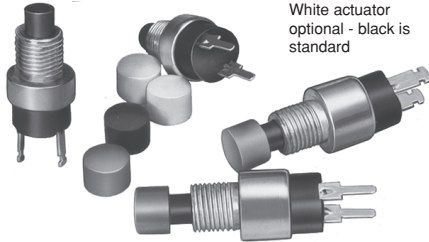
The material in this series is organized in the following sequence:

- Completely specified switch models & options
- 'build your own switch' order format
- Additional options & panel cut-outs

SPECIFICATIONS SUBJECT TO CHANGE WITHOUT NOTICE

# 300 & 400 SERIES - MINIATURE PUSHBUTTON SWITCHES

## 300 SERIES SPST Momentary (Normally open or normally closed)



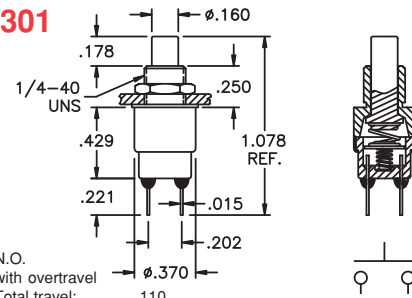
White actuator optional - black is standard

(Q) Power Model No.	(B) Dry ckt. Model No.	UL Model No.
301ZQE	301ZBE	301ZQE/UL
302ZQE	302ZBE	302ZQE/UL
303ZTE*	303ZBE	n/a
304ZTE*	304ZBE	n/a
305ZQE	305ZBE	305ZQE/UL
306ZQE	306ZBE	306ZQE/UL

Switch caps optional - see Hardware section of catalog.

\* indicates 'Q' option not available for these models

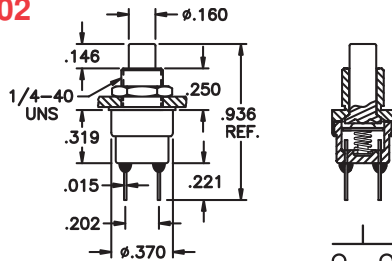
### 301



N.O. with overtravel  
Total travel: .110  
Overtravel: .020 min.  
Actuation force: 8.5 oz. ± 4 oz.

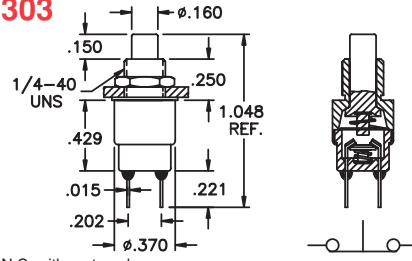
SPECIFICATIONS SUBJECT TO CHANGE WITHOUT NOTICE

### 302



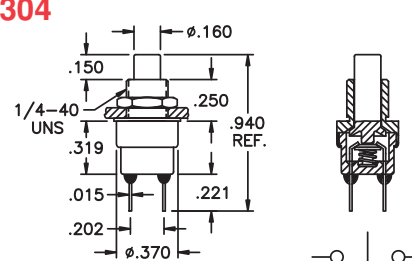
N.O. without overtravel  
Total travel: .060  
Actuation force: 10 oz. ± 4 oz.

### 303



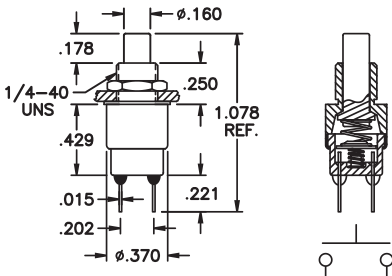
N.C. with pretravel  
Total travel: .055  
Pretravel: .020 min.  
Actuation force: 8 oz. ± 4 oz.

### 304



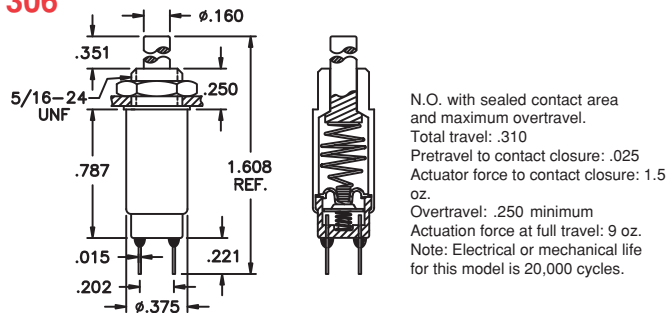
N.C. without pretravel  
Total travel: .040  
Actuation force: 8.5 oz. ± 4 oz.

### 305



N.O. with more overtravel than 301  
Total travel: .110  
Pretravel to contact closure: .030  
Actuation force to contact closure: 3 oz.  
Overtravel: .075  
Actuation force at full travel: 8 oz.

### 306



N.O. with sealed contact area and maximum overtravel.  
Total travel: .310  
Pretravel to contact closure: .025  
Actuator force to contact closure: 1.5 oz.  
Overtravel: .250 minimum  
Actuation force at full travel: 9 oz.  
Note: Electrical or mechanical life for this model is 20,000 cycles.

## 400 SERIES (401 Push on/ push off, 402 N.O. momentary)



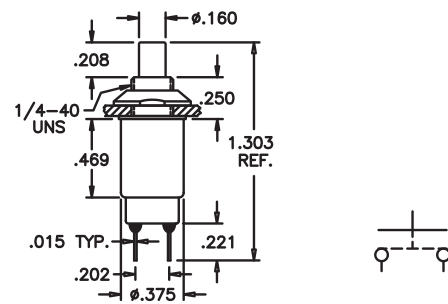
Black actuator optional - white is standard

(Q) Power Model No.	(B) Dry ckt. Model No.	UL Model No.
401ZQE	401ZBE	401ZQE/UL
402ZQE	402ZBE	402ZQE/UL

### SNAP-ACTION MECHANISM

Pretravel to contact closure: .026  
Travel to actuate switch: .106  
Total travel: .137  
Force to actuate switch: 22 oz.  
Force at maximum travel: 35 oz.  
Mechanical life: 1,000,000 cycles minimum

United States Patent 4,319,106  
Switchcaps optional - see Hardware section of catalog.



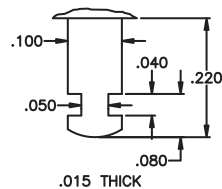
NOTE: When using sealing boot U5321 with 400 Series switches, add 'S1' to model number.

## OPTIONS

### Colored operating actuator

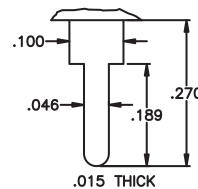
Available in dyed nylon. To specify, add digit at end of model number - 1 blue, 2 black, 3 green, 5 yellow, 6 red, 7/1 white or 9 orange. Black is standard for 300 Series. White is standard for 400 Series.

### Z



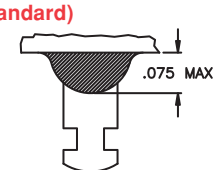
Solder lug terminal

### C



Printed circuit terminal

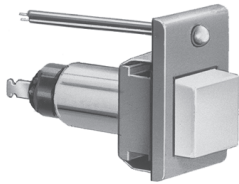
### E (standard)



Epoxy seal

# 300 & 400 SERIES - MINIATURE PUSHBUTTON SWITCHES

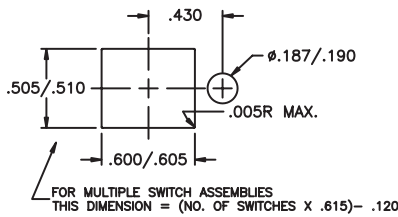
## Solder lug terminals - snap-in bezel with outboard LED



**401SZQEJ6168**

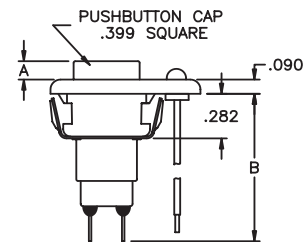
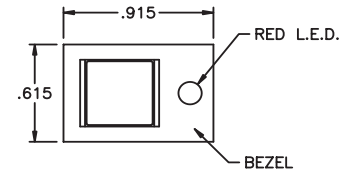
POWER CKT. MODEL NO.	DRY CKT. MODEL NO.	UL MODEL NO.	ELECTRICAL FUNCTION
301SZQEJ6168	301SZBEJ6168	301SZQEJ6168/UL	MOM. S.P.N.O. w/overtravel
302SZQEJ6168	302SZBEJ6168	302SZQEJ6168/UL	MOM. S.P.N.O. no overtravel
303SZQEJ6168	303SZBEJ6168	303SZQEJ6168/UL	MOM. S.P.N.C. w/pretravel
304SZQEJ6168	304SZBEJ6168	304SZQEJ6168/UL	MOM. S.P.N.C. no pretravel
305SZQEJ6168	305SZBEJ6168	305SZQEJ6168/UL	MOM. S.P.N.O. w/overtravel
401SZQEJ6168	401SZBEJ6168	401SZQEJ6168/UL	S.P Alternate snap-action
402SZQEJ6168	402SZBEJ6168	402SZQEJ6168/UL	MOM. S.P.N.O. (snap-action)

RECOMMENDED PANEL CUTOUT  
Panel thickness range - .047-.125



MODEL NO.	DIM. A	DIM. B
301	.108	.929
302	.085	.817
303	.085	.929
304	.085	.817
305	.108	.929
401	.145	1.142
402	.145	1.142

LED leads - 31/32" min. long  
Anode (front) - white  
Cathode (back) - black



## Solder lug terminals - snap-in bezel



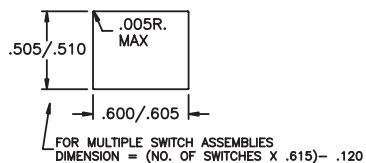
**302SZQEJ8168**



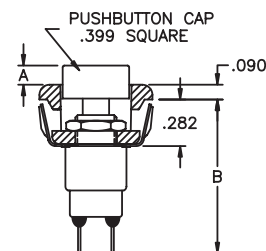
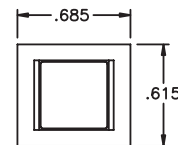
**401SZQEJ8188**

POWER CKT. MODEL NO.	DRY CKT. MODEL NO.	UL MODEL NO.	ELECTRICAL FUNCTION
301SZQEJ8168	301SZBEJ8168	301SZQEJ8168/UL	MOM. S.P.N.O. w/overtravel
302SZQEJ8168	302SZBEJ8168	302SZQEJ8168/UL	MOM. S.P.N.O. no overtravel
303SZQEJ8168	303SZBEJ8168	303SZQEJ8168/UL	MOM. S.P.N.C. w/pretravel
304SZQEJ8168	304SZBEJ8168	304SZQEJ8168/UL	MOM. S.P.N.C. no pretravel
305SZQEJ8168	305SZBEJ8168	305SZQEJ8168/UL	MOM. S.P.N.O. w/overtravel
401SZQEJ8168	401SZBEJ8168	401SZQEJ8168/UL	S.P Alternate snap-action
402SZQEJ8168	402SZBEJ8168	402SZQEJ8168/UL	MOM. S.P.N.O. (snap-action)

RECOMMENDED PANEL CUTOUT  
Panel thickness range - .047-.125

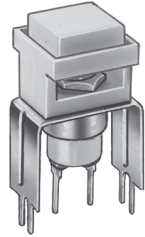


MODEL NO.	DIM. A	DIM. B
301	.108	.929
302	.085	.817
303	.085	.929
304	.085	.817
305	.108	.929
401	.145	1.142
402	.145	1.142



# 300 & 400 SERIES - MINIATURE PUSHBUTTON SWITCHES

## Straight p.c. terminals - p.c. mounting bezel

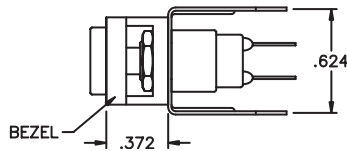
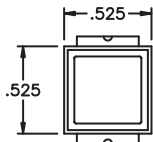
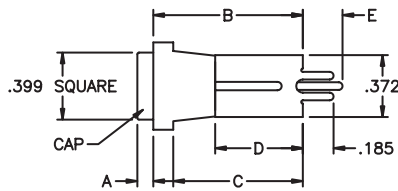


**302SV30BEJ8488**

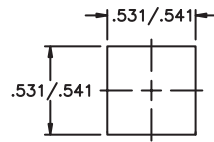
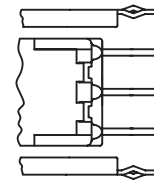
DRY CKT. MODEL NO.	ELECTRICAL FUNCTION
301SV30BEJ8488	MOM. S.P.N.O. w/overtravel
302SV30BEJ8488	MOM. S.P.N.O. no overtravel
305SV30BEJ8488	MOM. S.P.N.O. w/added overtravel

MODEL NO.	OPTION*	DIM. A	DIM. B	DIM. C	DIM. D	DIM. E
301S	V30	.100	.900	.780	.527	.237
301S	V40	.100	1.020	.900	.647	.118
302S	V30	.070	.900	.780	.527	.125
302S	V40	.070	1.020	.900	.647	.357
305S	V30	.100	.900	.780	.527	.237
305S	V40	.100	1.020	.900	.647	.118

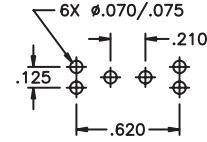
SPECIFICATIONS SUBJECT TO CHANGE WITHOUT NOTICE



\*Options V31 & V41 also available. They are the same as V30 & V40 respectively, except with crimped leg design for p.c. board retention, as shown.

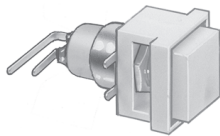


PANEL CUTOUT



P.C. LAYOUT

## Right angle p.c. terminals - p.c. mounting bezel

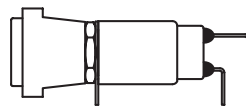
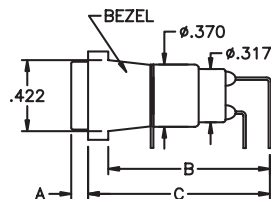
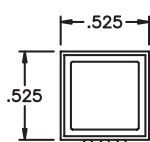
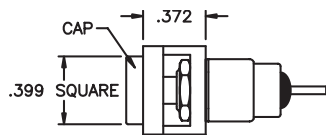


**302SV-1BEJ8488**

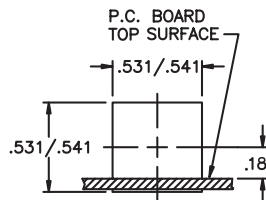
DRY CKT. MODEL NO.	ELECTRICAL FUNCTION
301SV-1BEJ8488	MOM. S.P.N.O. w/overtravel
302SV-1BEJ8488	MOM. S.P.N.O. no overtravel
305SV-1BEJ8488	MOM. S.P.N.O. w/added overtravel
401SV-1BEJ8488	S.P Alternate action w/ tactile response
402SV-1BEJ8488	MOM. S.P.N.O. w/ tactile response

MODEL NO.	OPTION	DIM. A	DIM. B	DIM. C	DIM. D	DIM. E	DIM. F
301S	V	.100	.960	1.080	.550	.150	.190
301S	V-1	.100	.910	1.030	.550	.100	.190
302S	V	.070	.860	.980	.450	.150	.190
302S	V-1	.070	.810	.930	.450	.100	.190
305S	V	.100	.960	1.080	.550	.150	.190
305S	V-1	.100	.910	1.030	.550	.100	.190
401S & 402S	V	.130	1.222	1.342	.750	.150	.220
401S & 402S	V-1	.130	1.172	1.292	.750	.100	.220

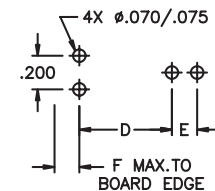
Notes: Terminals are not fully bent, to facilitate spring retention in p.c. board.



401 & 402 ONLY



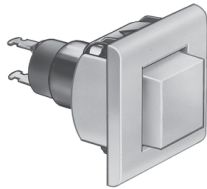
PANEL CUTOUT



P.C. LAYOUT

# 300 & 400 SERIES - MINIATURE PUSHBUTTON SWITCHES

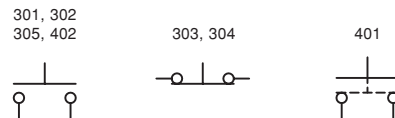
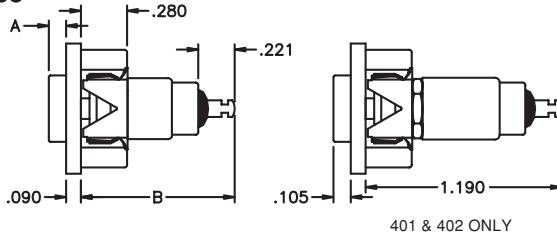
**Snap-in bezel for round hole mounting**  
Self-keying against rotation



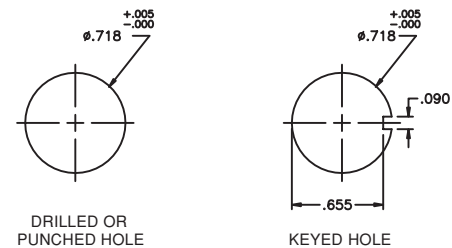
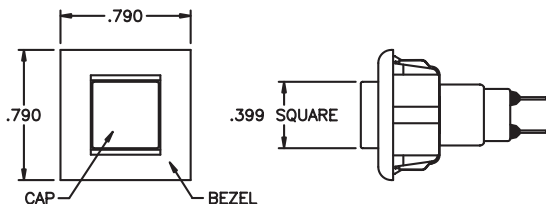
POWER CKT. MODEL NO.	DRY CKT. MODEL NO.	UL MODEL NO.	ELECTRICAL FUNCTION
301SZQEJ9688	301SZBEJ9688	301SZQEJ9688/UL	MOM. S.P N.O. w/overtravel
302SZQEJ9688	302SZBEJ9688	302SZQEJ9688/UL	MOM. S.P N.O. no overtravel
303SZQEJ9688	303SZBEJ9688	303SZQEJ9688/UL	MOM. S.P N.C. w/pretravel
304SZQEJ9688	304SZBEJ9688	304SZQEJ9688/UL	MOM. S.P N.C. no pretravel
305SZQEJ9688	305SZBEJ9688	305SZQEJ9688/UL	MOM. S.P N.O. w/overtravel
401SZQEJ9688	401SZBEJ9688	401SZQEJ9688/UL	S.P Alternate snap-action
402SZQEJ9688	402SZBEJ9688	402SZQEJ9688/UL	MOM. S.P N.O. (snap-action)

## 302SZQEJ9688

MODEL NO.	DIM. A	DIM. B
301	.108	.929
302	.085	.817
303	.085	.929
304	.085	.817
305	.108	.929
401 & 402	AS SHOWN	

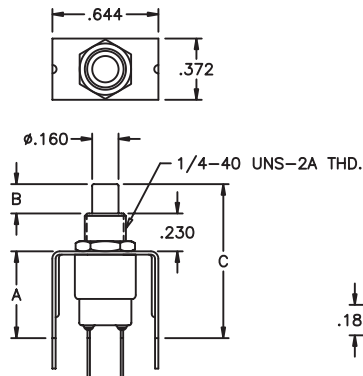
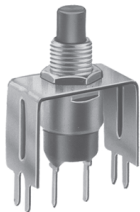


**RECOMMENDED PANEL CUTOUTS**  
Panel thickness range - .047 - .125



## OPTIONS FOR SELECTIVE MODELS ONLY

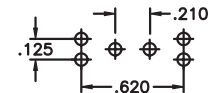
**Options V30 & V40** Straight p.c. terminals w/bracket  
For models 301, 302 & 305 only



MODEL NO.	*OPTION	DIM. A	DIM. B	DIM. C.	DIM. D.
301,305	V30	.527	.173	.933	.237
301,305	V40	.647	.173	1.053	.118
302	V30	.527	.150	.910	.125
302	V40	.647	.150	1.030	.357

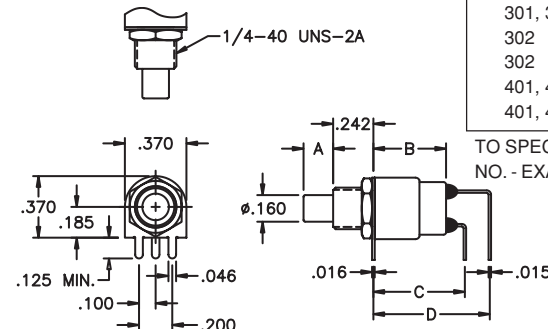
\* Options V31 and V41 with crimped leg design also available - see prior page.

TO SPECIFY, ADD OPTION FROM BOX TO SWITCH MODEL NO. - EXAMPLE: 302V31BE



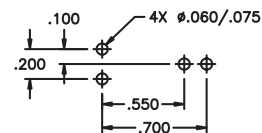
**P.C. BOARD LAYOUT**

**Options V & V-1** Right angle terminals w/bracket  
For models 301, 302, 305, 401 & 402 only



MODEL NO.	OPTION	DIM. A	DIM. B	DIM. C.	DIM. D.
301, 305	V	.173	.439	.550	.700
301, 305	V-1	.173	.439	.550	.650
302	V	.150	.327	.450	.600
302	V-1	.150	.327	.450	.550
401, 402	V	.210	.653	.750	.900
401, 402	V-1	.210	.653	.750	.850

TO SPECIFY, ADD OPTION FROM BOX TO SWITCH MODEL NO. - EXAMPLE: 301V-1BE



**P.C. BOARD LAYOUT**

Support Bracket is Brass, Solder Coated.  
Available with **B**, **N**, or **T** Contact Materials.  
(See pg. C29)  
Supplied with Epoxy Sealed Terminals.

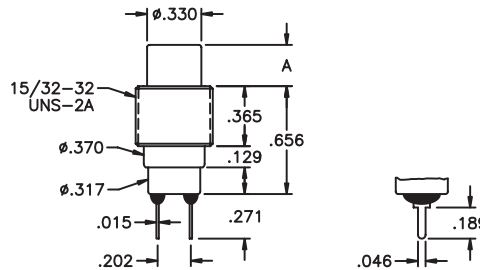
Note: Terminals are not fully bent, to facilitate spring retention in p.c. board.

SPECIFICATIONS SUBJECT TO CHANGE WITHOUT NOTICE

# 300 & 400 SERIES - MINIATURE PUSHBUTTON SWITCHES

## OPTIONS FOR SELECTIVE MODELS ONLY

**Option T1** 15/32" bushing mounts from front or rear of panel  
For models 301, 303 & 305 only



MODEL NO.	A
301,305	.250
303	.225

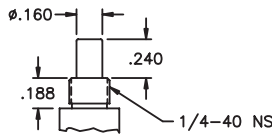
TO SPECIFY, ADD 'T1' TO SWITCH MODEL NO. - EXAMPLE: 301T1CQE6

Threaded bushing: Brass, nickel plated  
Actuator button: Nylon. Specify color - see order format.

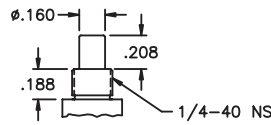
Supplied with 2 Hex Nuts, p/n A465 & 1 Lockwasher, p/n A466 (see Hardware section of catalog).

Printed circuit or solder lug terminals available.

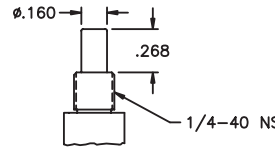
**Option S** Long actuator  
For models 301, 302, 303, 304, 305, 401 & 402 only



301 & 305



302, 303 & 304



401 & 402

TO SPECIFY, ADD 'S' TO SWITCH MODEL NO. - EXAMPLE: 301SCQE

Actuator: Nylon

Color: Black standard for 300 Series

White standard for 400 Series.

Other colors available - see options.

NOTE: When using sealing boot U5321 with 400 Series switches, add 'S1' to model number. This option is not illustrated.

**Additional ordering information:** Commonly ordered models are shown above and on prior pages with complete model numbers and specifications. Below is an order format that enables you to 'build your own switch' and specify the correct switch model number by simply selecting from all available options shown and filling in the boxes.

## 'BUILD YOUR OWN SWITCH' ORDER FORMAT

Fill in boxes with selections shown for **Model Structure**, then add **Options** selections for complete model number. Allowable options are shown below each respective box with brief description - see option dwgs. & info. following.

Notes: 'NONE' indicates box may be left empty. Not all combinations can be made - see other pages of Series.

### Model Structure:

Series	Actuators	Bushings	Terminations	Contact materials	Sealing
<input type="text"/>	<input type="text"/>	<input type="text"/>	<input type="text"/>	<input type="text"/>	<input type="text"/>
3 0 1	(NONE)	(NONE)	Z Solder lug	B Gold	E Epoxy terminal seal is standard
3 0 2	S Long (see	T 1 15/32" thd'd.	C Printed circuit	Q Coin silver	(Not available with 303 & 304)
3 0 3	dwg. - specify	(see dwg -	V Right angle p.c. term-	N Economy gold	
3 0 4	for all models	for 301,	V - 1 inals for 301, 302, 305,	T Economy silver	
3 0 5	with bezels-	303 & 305	401 & 402 only (see dwg.).		
3 0 6	not available	only).	V 3 0 Straight p.c. terminals		
4 0 1	for 306).		V 4 0 with bracket for 301,		
4 0 2	S 1 For		V 4 0 302 & 305 only		
	400 Series		V 4 1 (see dwg.).		
	switches used				
	with sealing				
	boot U5321				
	only.				

### Options:

Bezel& cap	Bezel color	Cap color	Recognitions
<input type="text"/>	<input type="text"/>	<input type="text"/>	<input type="text"/>
(NONE)	(NONE)	(NONE)	(NONE)
J 6 1 Snap-in w/LED	2 Black	2 Black	/U L
J 8 1 Snap-in no LED	6 Red	6 Red	
J 8 4 P.C. style	8 White	8 White	
J 9 6 Snap-in (round hole)	Other Colors Available	Other Colors Available	

Switch caps for switches without bezels also available - see Hardware section of catalog.

Example of completely specified model number:  
**301SZQEJ8122/UL**

Although most combinations of options are available, some may result in incompatibilities. Consult factory if there is any question.

# 300 & 400 SERIES - MINIATURE PUSHBUTTON SWITCHES

## CONTACT MATERIAL OPTIONS

- B** Dry circuit - gold over nickel over brass.  
 RATING: 0.4 Volt-Amps (VA) max. at 20 V max.  
 ELECTRIC LIFE: 250,000 cycles minimum.
- Q** Power circuit - coin silver.  
 RATING: 1 Amp at 120 VAC or 28 VDC or 0.5 Amps at 250 VAC. ELECTRIC LIFE: 250,000 cycles minimum at full load.  
 Also - 3 Amps at 120 VAC or 28 VDC or 1.5 Amps at 250 VAC. ELECTRIC LIFE: 10,000 cycles minimum at full load.  
 Dry circuit or power circuit - gold over nickel over coin silver.
- G** Dry circuit - gold over nickel over coin silver.  
 RATINGS & ELECTRIC LIFE: Same as B & Q above -i.e.- can be used in either dry circuit or power circuit, however once used in power circuit, switch cannot be re-used in dry circuit. This option permits customers to inventory one switch to satisfy either application,
- N** RATING: 0.4 Volt-Amps (VA) max. at 20 V max. Note- less gold than B option.  
 ELECTRIC LIFE: 10,000 cycles min. at 13 cycles per minute.
- T** Power circuit - Silver plate over brass.  
 RATING: 0.5 Amps at 120 VAC or 0.25 Amps at 250 VAC (resistive loads).  
 ELECTRIC LIFE: 10,000 cycles min. at 13 cycles per minute.

Solder dipped terminals and custom contact plating available - contact factory.

## UL OPTION

- /UL** For power circuits - coin silver  
 RATING: 0.5 Amps at 250 VAC (75% power factor).  
 Underwriter Laboratories file no. E66367. Note - applicable only to terminations with coin silver contacts (Q or G options).

## HARDWARE

### HARDWARE SUPPLIED

(See Hardware section of catalog)

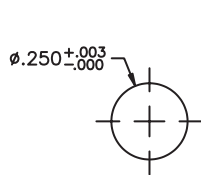
Panel mounted 300 Series switches with threaded 1/4" bushing are supplied with 1 Hex Nut A112 and 1 Lockwasher A115.

Panel mounted 300 Series switches with threaded 15/32" bushing are supplied with 2 Hex Nuts A465 and 1 Lockwasher A466.

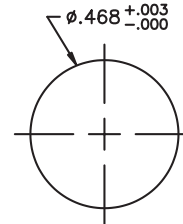
Panel mounted 306 Series switches with threaded 5/16" bushing are supplied with 1 Hex Nut A713 and 1 Lockwasher A734.

Panel mounted 400 Series switches with threaded bushing are supplied with 1 Panel Dress Nut A274 and 1 Lockwasher A115.

## PANEL CUT-OUTS



Accepts all 1/4" threaded bushings



Accepts all 15/32" threaded bushings

SPECIFICATIONS SUBJECT TO CHANGE WITHOUT NOTICE