

ACTIVE 2X FREQUENCY MULTIPLIER (CONT.)

MODEL: SYS2X1326

FEATURES

- Fundamental rejection -70 dBc
- Output power +16 dBm
- Packaging Hermetically sealed

ELECTRICAL SPECIFICATIONS

INPUT PARAMETERS	CONDITION	UNITS	MIN.	TYP.	MAX.
RF frequency range		GHz	10		13.25
RF VSWR	50 ohm reference	Ratio		2.5:1	
RF power range		dBm	+10		+12
V+ bias voltage	@ 250 mA max.	VDC	9		16
V- bias voltage	@ 15 mA max.	VDC	-9		-16
TRANSFER CHARACTERISTICS	CONDITION	UNITS	MIN.	TYP.	MAX.
Output power		dBm	+16		
Fundamental leakage	f_o 21–26.5 GHz	Input		-70	-50
	f_o 20–21.5 GHz			-40	-25
OUTPUT PARAMETERS	CONDITION	UNITS	MIN.	TYP.	MAX.
RF frequency range		GHz	20		26.5
RF VSWR	50 ohm reference	Ratio		2.5:1	

MAXIMUM RATINGS

Specification temperature +25°C
 Operating temperature -40 to +65°C
 Storage temperature -65 to +95°C

ADD SUFFIX TO

MODEL NO.

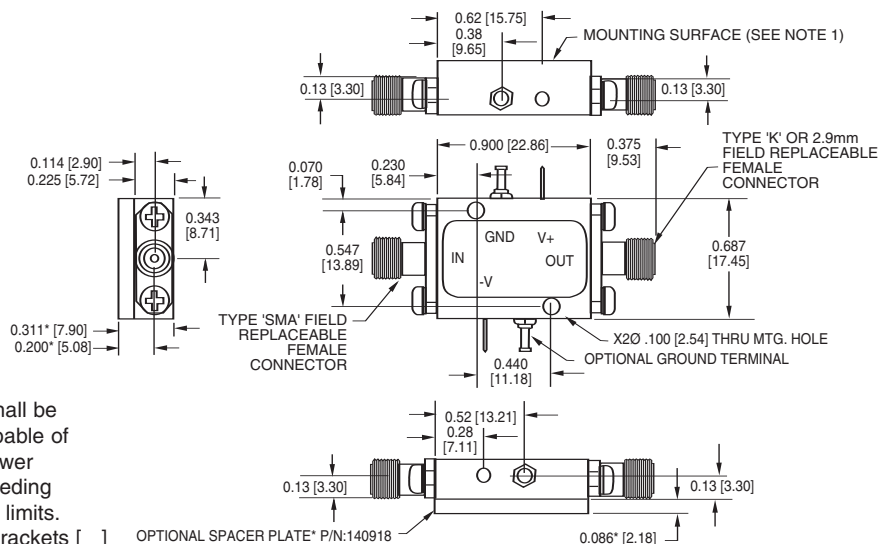
WG
S

OPTIONS

WR42 waveguide adaptor
Single positive supply

NOTE: Test data supplied at 25°C; fundamental rejection and output power.

OUTLINE DRAWING



- NOTES: 1. Unit's mounting surface shall be attached to a heatsink capable of dissipating the device's power consumption without exceeding the operating temperature limits.
 2. All dimensions shown in brackets [] are in millimeters.

