

PLEASE CHECK WWW.MOLEX.COM FOR LATEST PART INFORMATION

Part Number: **0687690028**
Status: **Active**
Overview: ieee 1394
Description: IEEE 1394B Beta 9-pin-to-9-pin Cable Assembly, 2.0m (6.56') Length

Documents:

[Drawing \(PDF\)](#) [RoHS Certificate of Compliance \(PDF\)](#)
[Product Specification PS-68769-001 \(PDF\)](#)

General

Product Family	Cable Assemblies
Series	<u>68769</u>
Connector to Connector	IEEE1394b-2002 Both Ends
Overview	<u>ieee 1394</u>
Product Name	IEEE 1394

Physical

Cable Length	2.0m (6.56')
Circuits (Loaded)	9
Color - Resin	Natural
Gender	Male-Male
Lock to Mating Part	Yes
Material - Resin	Low Density Polyethylene
Packaging Type	Bag
Single Ended	No
Wire Insulation Diameter	N/A
Wire Size AWG	N/A
Wire/Cable Type	Round

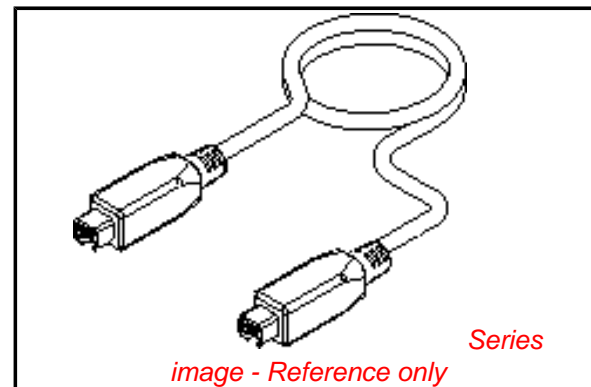
Electrical

Current - Maximum per Contact	1.5A
Impedance	110 ohms
Shielded	Yes
Voltage - Maximum	30V

Material Info

Reference - Drawing Numbers

Product Specification	PS-68769-001
Sales Drawing	SD-68769-028



EU RoHS

**ELV and RoHS
Compliant**
**REACH SVHC
Not Reviewed**
**Halogen-Free
Status
Not Reviewed**

China RoHS



**Need more information on product
environmental compliance?**

Email productcompliance@molex.com
For a multiple part number RoHS Certificate of Compliance, [click here](#)

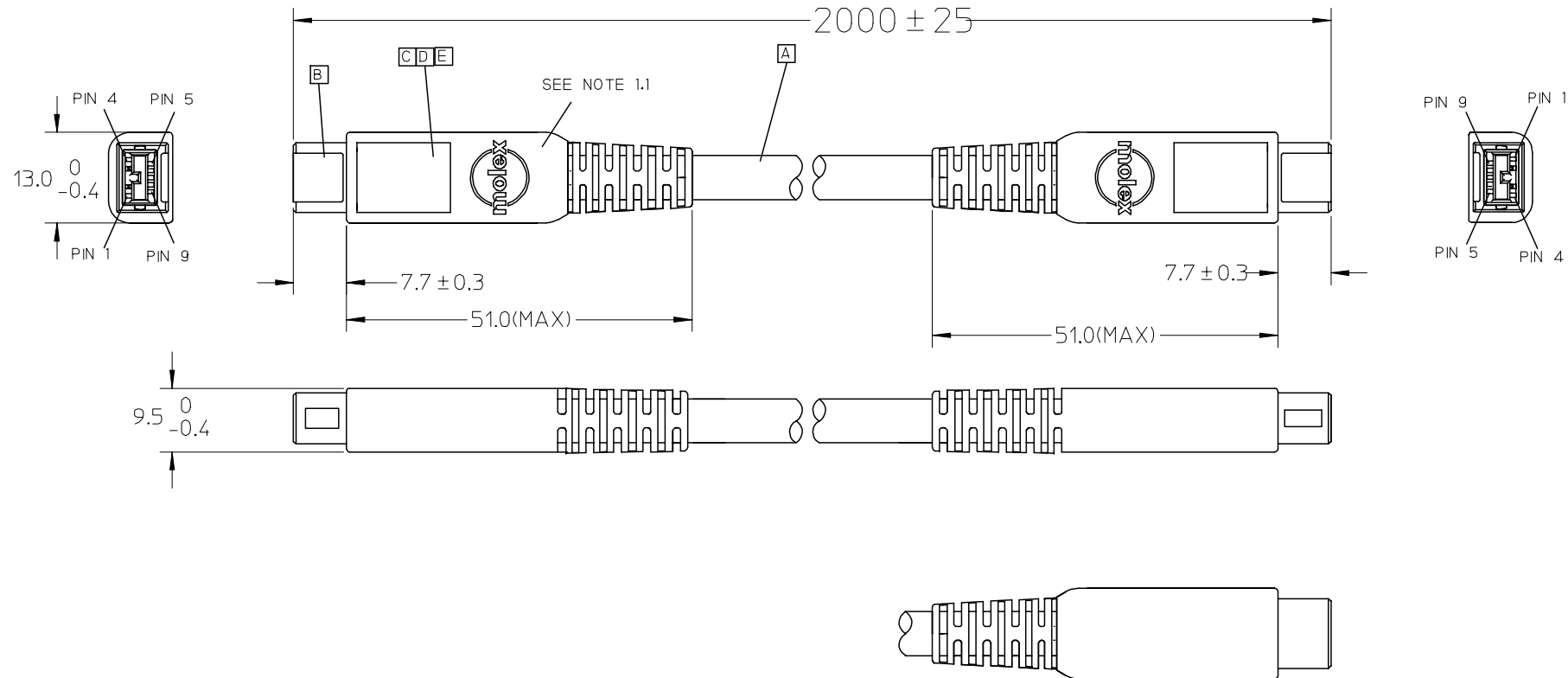
Please visit the [Contact Us](#) section for any non-product compliance questions.

Search Parts in this Series

[68769Series](#)

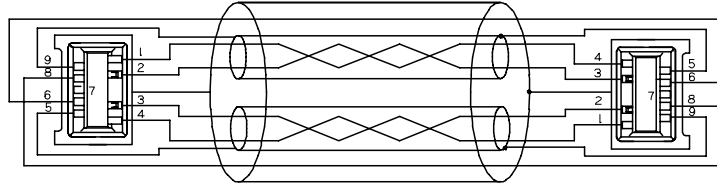
Mates With

[44647](#) IEEE 1394b-2002 Shielded I/O PCB Bilingual Socket



ENTER DESCRIPTION EC NO: DG2006-0086 DRWN: JFZHENG 2005/10/15 CHKD: JFZHENG 2005/10/17 APPR: DQLUO 2006/08/25 1	QUALITY SYMBOLS ▽=0 ◻=0	GENERAL TOLERANCES (UNLESS SPECIFIED) <table border="1"> <thead> <tr> <th></th> <th>mm</th> <th>INCH</th> </tr> </thead> <tbody> <tr> <td>4 PLACES</td> <td>±---</td> <td>±---</td> </tr> <tr> <td>3 PLACES</td> <td>±---</td> <td>±---</td> </tr> <tr> <td>2 PLACES</td> <td>±---</td> <td>±---</td> </tr> <tr> <td>1 PLACE</td> <td>±---</td> <td>±---</td> </tr> </tbody> </table>		mm	INCH	4 PLACES	±---	±---	3 PLACES	±---	±---	2 PLACES	±---	±---	1 PLACE	±---	±---	DIMENSION STYLE MM ONLY DRAWN BY: JFZHENG DATE: 2005/06/20 CHECKED BY: JFZHENG DATE: 2005/06/20 APPROVED BY: DQLUO DATE: 2005/06/20	SCALE --- DESIGN UNITS METRIC THIRD ANGLE PROJECTION	TITLE 1394B BETA 9P TO 9P 2M GREY CABLE ASS'Y MOLEX INCORPORATED
		mm	INCH																	
	4 PLACES	±---	±---																	
	3 PLACES	±---	±---																	
	2 PLACES	±---	±---																	
1 PLACE	±---	±---																		
DRAFT WHERE APPLICABLE MUST REMAIN WITHIN DIMENSIONS	MATERIAL NO. 687690028	DOCUMENT NO. SD-68769-028	SHEET NO. 1 OF 2																	
SIZE A4	THIS DRAWING CONTAINS INFORMATION THAT IS PROPRIETARY TO MOLEX INCORPORATED AND SHOULD NOT BE USED WITHOUT WRITTEN PERMISSION																			

WIRING DIAGRAM:



NOTE:

- 1.OVERMOLD SPECIFICATION
 - 1.1 INNER MOLD WITH PE RESIN 887800008
 - 1.2 OVERMOLD MOLDED WITH GREY PVC RESIN.887800152
- 2.CONNECTOR NEED TO BE 360 DEG. SOLDERING.

MATERIAL LIST:

E	1394B SOLDER 1/0 CONN. 172000528		2
D	1394B REAR SHELL:172000530		2
C	1394B FRONT SHELL:172000529		2
B	1394 9PIN BETA PLUG 172000532		2
A	2P*30+2C*26+SHLD:PVC:GY:5.50MM:IEEE1394b:887808510	2M Ref.	1
ITEM	DESCRIPTION	L	QTY.

PIN OUT TABLE

Plug1: Beta plug contact number	Signal name at plug 1 end: cable as defined in this standard	Plug2: Beta plug contact number
1	TPB*(Twisted pair B Minus) (RED)	3
2	TPB(Twisted pair B Plus) GREEN	4
3	TPA*(Twisted Pair A minus) (LBUE)	1
4	TPA(Twisted pair A Plus) (ORGANGE)	2
5	TPA(R)(Twisted Pair A Ground Rederence)	9
6	VG(Power Ground) (BLACK)	6
7(no connection)	NO connection	7(no connection)
8	Vp(Power Voltage) (WHITE)	8
9	TPB(R)(Twisted Pair B Ground Reference)	5
plug shield	Cable Shield Ground	Plug shield

ENTER DESCRIPTION EC NO: DG2006-0086 DRWN: JFZHENG 2005/10/15 CHKD: JFZHENG 2005/10/17 APPR: DQLUO 2006/08/25	QUALITY SYMBOLS ▽=0 ▽=0	GENERAL TOLERANCES (UNLESS SPECIFIED)		DIMENSION STYLE MM ONLY	SCALE ---	DESIGN UNITS METRIC	THIRD ANGLE PROJECTION		
			mm	INCH	DRAWN BY JFZHENG	DATE 2005/06/20	TITLE 1394B BETA 9P TO 9P 2M GREY CABLE ASS'Y		
		4 PLACES	± ---	± ---	CHECKED BY JFZHENG	DATE 2005/06/20			
		3 PLACES	± ---	± ---	APPROVED BY DQLUO	DATE 2005/06/20	MOLEX INCORPORATED		
2 PLACES	± ---	± ---	ANGULAR ±1/2°		MATERIAL NO. 68769-0028	DOCUMENT NO. SD-68769-028	SHEET NO. 2 OF 2		
1 PLACE	± ---	± ---	DRAFT WHERE APPLICABLE MUST REMAIN WITHIN DIMENSIONS		THIS DRAWING CONTAINS INFORMATION THAT IS PROPRIETARY TO MOLEX INCORPORATED AND SHOULD NOT BE USED WITHOUT WRITTEN PERMISSION				