

PLEASE CHECK WWW.MOLEX.COM FOR LATEST PART INFORMATION

Part Number: **0334820802**
Status: **Active**
Overview: mx150 sealed connector system
Description: 3.50mm (.138") Pitch MX150™ Sealed Male Connector, Dual Row, 8 Circuits, Polarization B, without Connector Position Assurance, Gray

Documents:

| | |
|---|--|
| 3D Model | Product Specification PS-33472-000 (PDF) |
| Application Specification (PDF) | RoHS Certificate of Compliance (PDF) |
| Drawing (PDF) | |



General

| | |
|--------------------------------|---|
| Product Family | Crimp Housings |
| Series | <u>33482</u> |
| Comments | No Connector Position Assurance (CPA) |
| More Detailed Tech Information | http://ewcap.uscarteams.org |
| Overview | <u>mx150 sealed connector system</u> |
| Product Name | MX150™ |

Physical

| | |
|-------------------------------|------------------------------|
| Circuits (maximum) | 8 |
| Circuits Detail | 8 |
| Color - Resin | Black, Gray (Light), Natural |
| Gender | Male |
| Glow-Wire Compliant | No |
| Keying to Mating Part | Yes |
| Lock to Mating Part | Yes |
| Material - Resin | Modified Polystyrene Alloy |
| Number of Rows | 2 |
| Packaging Type | Bag |
| Panel Mount | No |
| Pitch - Mating Interface (in) | 0.138 In |
| Pitch - Mating Interface (mm) | 3.50 mm |
| Polarized to Mating Part | Yes |
| Stackable | No |
| Temperature Range - Operating | -40°C to +125°C |

Electrical

| | |
|-------------------------------|-----|
| Current - Maximum per Contact | 22A |
|-------------------------------|-----|

Material Info

Reference - Drawing Numbers

| | |
|---------------------------|--------------|
| Application Specification | AS-33472-100 |
| Packaging Specification | PK-31300-635 |
| Product Specification | PS-33472-000 |
| Sales Drawing | SD-33482-081 |

| | |
|---|-----------------------|
| EU RoHS ELV and RoHS Compliant REACH SVHC Contains SVHC: No Halogen-Free Status Not Reviewed | China RoHS |
|---|-----------------------|

Need more information on product environmental compliance?

Email productcompliance@molex.com
 For a multiple part number RoHS Certificate of Compliance, [click here](#)

Please visit the [Contact Us](#) section for any non-product compliance questions.

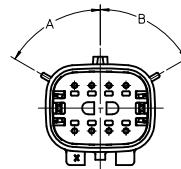
Search Parts in this Series
[33482Series](#)

Mates With
[33472](#) Female Dual Row Sealed Connector

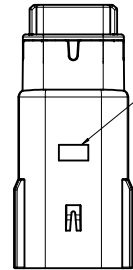
Use With
[33000](#) MX150™ Tin (Sn) Male Terminal,
[33011](#) Gold (Au) Male Terminal

PLEASE CHECK WWW.MOLEX.COM FOR LATEST PART INFORMATION

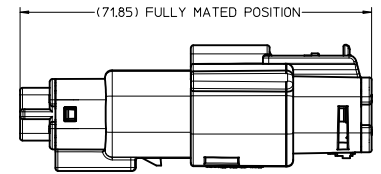
| ASSEMBLY PART NUMBER | COLOR | KEYING OPTION | DIMENSIONS | | CAVITY TYPE & STATUS (X = PLUGGED) | | | | | | | | | | | | | | | |
|----------------------|---------|---------------|------------|----|------------------------------------|---|---|---|---|---|---|---|---|---|--|--|--|--|--|---|
| | | | A | B | 1 | 2 | 3 | 4 | 5 | 6 | 7 | 8 | | | | | | | | |
| 33482-0801 | BLACK | A | 60 | 60 | | | | | | | | | | | | | | | | |
| 33482-0802 | LT.GRAY | B | 25 | 60 | | | | | | | | | | | | | | | | |
| 33482-0803 | BROWN | C | 60 | 25 | | | | | | | | | | | | | | | | |
| 33482-0804 | GREEN | D | 25 | 25 | | | | | | | | | | | | | | | | |
| 33482-0805 | CUSTOM | TBD | | | | | | | | | | | | | | | | | | |
| 33482-0806 | BLACK | A | 60 | 60 | | | | | | | | | X | | | | | | | |
| 33482-0807 | LT.GRAY | B | 25 | 60 | | | | | | | | | X | | | | | | | |
| 33482-0808 | BROWN | C | 60 | 25 | | | | | | | | | X | | | | | | | |
| 33482-0809 | GREEN | D | 25 | 25 | | | | | | | | | X | | | | | | | |
| 33482-0810 | CUSTOM | TBD | | | | | | | | | | | X | | | | | | | |
| 33482-0811 | BLACK | A | 60 | 60 | | | | | | | | X | X | | | | | | | |
| 33482-0812 | LT.GRAY | B | 25 | 60 | | | | | | | | X | X | | | | | | | |
| 33482-0813 | BROWN | C | 60 | 25 | | | | | | | | X | X | | | | | | | |
| 33482-0814 | GREEN | D | 25 | 25 | | | | | | | | X | X | | | | | | | |
| 33482-0815 | CUSTOM | TBD | | | | | | | | | | X | X | | | | | | | |
| 33482-0816 | BLACK | A | 60 | 60 | X | | | | | | | X | X | | | | | | | |
| 33482-0817 | LT.GRAY | B | 25 | 60 | X | | | | | | | X | X | | | | | | | |
| 33482-0818 | BROWN | C | 60 | 25 | X | | | | | | | X | X | | | | | | | |
| 33482-0819 | GREEN | D | 25 | 25 | X | | | | | | | X | X | | | | | | | |
| 33482-0820 | CUSTOM | TBD | | | | | | | | | | X | X | | | | | | | |
| 33482-0821 | BLACK | A | 60 | 60 | X | | | | | | | X | X | | | | | | | X |
| 33482-0822 | LT.GRAY | B | 25 | 60 | X | | | | | | | X | X | | | | | | | X |
| 33482-0823 | BROWN | C | 60 | 25 | X | | | | | | | X | X | | | | | | | X |
| 33482-0824 | GREEN | D | 25 | 25 | X | | | | | | | X | X | | | | | | | X |
| 33482-0825 | CUSTOM | TBD | | | | | | | | | | X | X | | | | | | | X |
| 33482-0826 | BLACK | A | 60 | 60 | X | X | X | | | | | X | X | X | | | | | | X |
| 33482-0827 | BLACK | A | 60 | 60 | | | | | | | | X | X | | | | | | | X |
| 33482-0828 | BLACK | A | 60 | 60 | | | | X | | | | X | X | | | | | | | X |
| 33482-0829 | BLACK | A | 60 | 60 | | | X | X | X | X | X | X | X | | | | | | | X |
| 33482-0830 | BLACK | A | 60 | 60 | | | | | | | | X | X | | | | | | | X |
| 33482-0831 | BLACK | A | 60 | 60 | | | | X | | | | X | X | | | | | | | X |
| 33482-0832 | BLACK | A | 60 | 60 | | | | | | | | X | X | | | | | | | X |
| 33482-0833 | BLACK | A | 60 | 60 | X | | | X | X | X | X | X | X | | | | | | | X |
| 33482-0834 | BLACK | A | 60 | 60 | X | X | X | X | X | X | X | X | X | | | | | | | X |
| 33482-0835 | BLACK | A | 60 | 60 | | | | | | | | X | X | | | | | | | X |
| 33482-0836 | BLACK | A | 60 | 60 | | | X | X | | | | X | X | | | | | | | X |
| 33482-0837 | BLACK | A | 60 | 60 | X | | | | | | | X | X | | | | | | | X |
| 33482-0838 | BLACK | A | 60 | 60 | | | X | X | | | | X | X | X | | | | | | X |



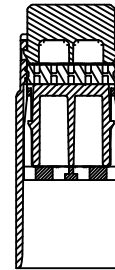
KEYING OPTION
SEE TABLE SCALE 2:1



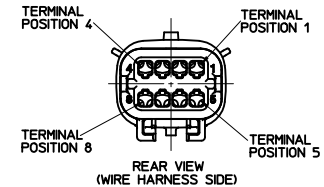
OPTIONAL TRACEABILITY
INFORMATION LOCATED IN
THIS AREA



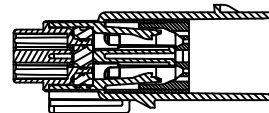
SCALE 1:1



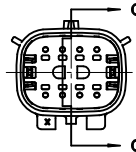
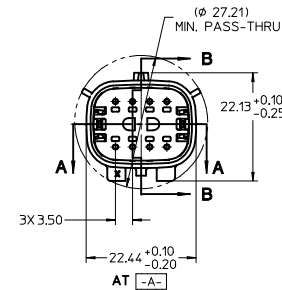
SECTION A-A



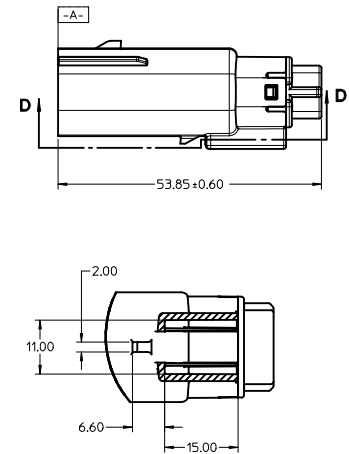
REAR VIEW
(WIRE HARNESS SIDE)



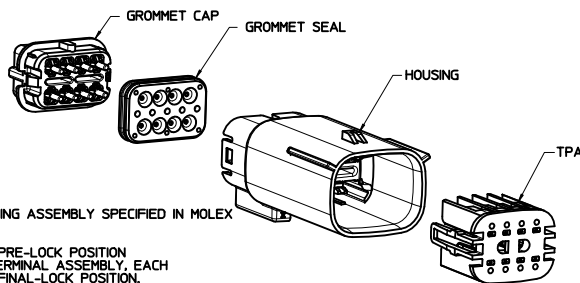
SECTION B-B
(BLADE SHOWN IN FULL-LOCK POSITION)
SEE NOTE 2



SECTION C-C
(BLADE SHOWN IN PRE-LOCK POSITION)
SEE NOTE 2



SECTION D-D



NOTES: UNLESS OTHERWISE SPECIFIED

- DESIGNED TO MATE WITH RECEPTACLE HOUSING ASSEMBLY SPECIFIED IN MOLEX CHARTED DRAWING SD-33472-081.
- ASSEMBLY SHIPPED WITH BLADE INSERT IN PRE-LOCK POSITION (SEE SECTION C-C PRE-LOCK). UPON FULL TERMINAL ASSEMBLY, EACH BLADE INSERT MUST BE SNAPPED INTO ITS FINAL-LOCK POSITION.
- FOR BLADE TERMINALS TO BE USED WITH THIS ASSEMBLY, SEE DRAWING SD-33000-001.
- SYSTEM TO BE USED WITH WIRE WITHIN DIAMETER RANGE OF 1.5mm TO 2.5mm.
- MATERIAL: SPS/NYLON BLEND, 20% GLASS FILLED.
- CHENGDU ASSEMBLIES SHALL CONFORM TO PACKAGING SPECIFICATION PK-31300-635
- SHALL CONFORM TO PRODUCT SPECIFICATION PS-33472-000.
- ASSEMBLY CONFORMS TO SAE/USCAR-2 REV 4 WITH THE FOLLOWING EXCEPTIONS:
TERMINAL INSERTION FORCE FOR WIRE SIZE ABOVE 2.5mm NOT EXCEEDING 2.69mm SHALL NOT EXCEED 45 NEWTONS.

| | | | | | | | |
|--|-----------------|---|------------------------------------|---|--------------------------------------|---------------------------------|------------------|
| ENTER DESCRIPTION IEC NO: UAU2010-1454 DRAWN BY: DRWN:AH01 CHECKED BY: CHKD:GRFFTHS APPROVED BY: APPR:VKOSHY DATE: 2010/02/04 DATE: 2010/02/17 DATE: 2010/02/17 | QUALITY SYMBOLS | GENERAL TOLERANCES (UNLESS SPECIFIED) | DIMENSION STYLE | SCALE | DESIGN UNITS | THIRD ANGLE PROJECTION | |
| | ▽=0 | mm INCH | MM ONLY | 2:1 | METRIC | ☉ | |
| | ▽=0 | 4 PLACES ± --- ± --- | DRAWN BY: DMARCOUX DATE: 06-17-02 | TITLE: MX150 BLADE CONNECTOR ASSEMBLY 2 ROW SEALED, 8 WAY | CHECKED BY: DGRIFITHS DATE: 06-17-02 | MATERIAL NO. MOLEX INCORPORATED | SHEET NO. 1 OF 1 |
| | ▽=0 | 2 PLACES ± 0.10 ± --- 1 PLACE ± 0.3 ± --- ANGULAR ± 3 ° | APPROVED BY: FHOLUB DATE: 06-17-02 | MATERIAL NO. AS NOTED | DOCUMENT NO. SD-33482-081 | | |
| DRAFT WHERE APPLICABLE MUST REMAIN WITHIN DIMENSIONS | | THIS DRAWING CONTAINS INFORMATION THAT IS PROPRIETARY TO MOLEX INCORPORATED AND SHOULD NOT BE USED WITHOUT WRITTEN PERMISSION | | | | | |