

**PLEASE CHECK WWW.MOLEX.COM FOR LATEST PART INFORMATION**

**Part Number:** [0359550410](#)  
**Status:** **Active**  
**Description:** 6.35mm (.250") Tab Wire-to-Wire Plug Housing, Locking Window, 4 Circuits

**Documents:**

<a href="#">Drawing (PDF)</a>	<a href="#">Product Specification PS-35955-001 (PDF)</a>
<a href="#">Product Specification PS-35725-005 (PDF)</a>	<a href="#">RoHS Certificate of Compliance (PDF)</a>

**General**

Product Family	Crimp Housings
Series	<a href="#">35955</a>
Product Name	N/A

**Physical**

Circuits (maximum)	4
Gender	Male
Glow-Wire Compliant	No
Lock to Mating Part	Yes
Number of Rows	2
Packaging Type	Bag
Panel Mount	No
Pitch - Mating Interface (in)	0.354 In
Pitch - Mating Interface (mm)	9.00 mm
Polarized to Mating Part	Yes
Stackable	No
Temperature Range - Operating	-40°C to +120°C

**Material Info**

**Reference - Drawing Numbers**

Packaging Specification	PK-35955-001
Product Specification	PS-35725-005, PS-35955-001
Sales Drawing	SD-35955-0410

**EU RoHS**

**ELV and RoHS Compliant**

**REACH SVHC**

Not Reviewed

**Halogen-Free**

**Status**

**Not Reviewed**

**China RoHS**



**Need more information on product environmental compliance?**

Email [productcompliance@molex.com](mailto:productcompliance@molex.com)  
 For a multiple part number RoHS Certificate of Compliance, [click here](#)

Please visit the [Contact Us](#) section for any non-product compliance questions.

**Search Parts in this Series**

[35955Series](#)

**Mates With**

[35955-0420](#)

**Use With**

[35725-18\\*0](#)|[35725-19\\*0](#)|[35725-30\\*0](#)

**PLEASE CHECK WWW.MOLEX.COM FOR LATEST PART INFORMATION**

F

E

D

C

B

A

F

E

D

C

B

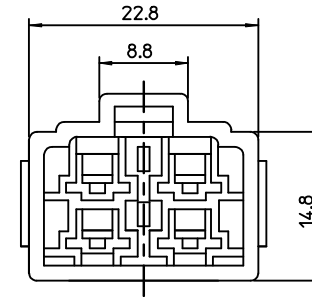
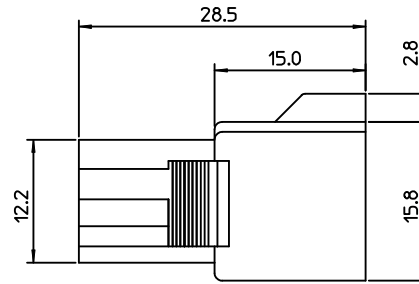
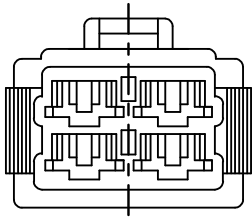
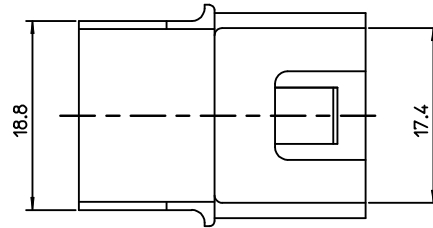
A

1. MATERIAL & COLOR

MATERIAL NO.	ENG NO.	MATERIAL	COLOR
359550410	35955-0410	PA66(UL94V-2)	NATURAL
APPLICABLE TERMINAL			
35725-18*0	35725-19*0	35725-30*0	

2. MATED HSG & APPLICABLE TERMINAL

MATERIAL NO.	ENG NO.	MATERIAL	COLOR
359550420	35955-0420	PA66(UL94V-2)	NATURAL
APPLICABLE TERMINAL			
35725-36*0	35725-37*0	35725-38*0	



REVISED EC NO: KOR2009-0054 DRWN: JHPARK01 2008/10/27 CHKD: WY YANG 2008/10/27 APPR: YUNSIKKIM 2008/10/27	QUALITY SYMBOLS	GENERAL TOLERANCES (UNLESS SPECIFIED) <table border="1"> <thead> <tr> <th></th> <th>mm</th> <th>INCH</th> </tr> </thead> <tbody> <tr> <td>4 PLACES</td> <td>± ---</td> <td>± ---</td> </tr> <tr> <td>3 PLACES</td> <td>± ---</td> <td>± ---</td> </tr> <tr> <td>2 PLACES</td> <td>± 0.30</td> <td>± ---</td> </tr> <tr> <td>1 PLACE</td> <td>± 0.30</td> <td>± ---</td> </tr> <tr> <td colspan="3">ANGULAR ± 1 °</td> </tr> </tbody> </table>		mm	INCH	4 PLACES	± ---	± ---	3 PLACES	± ---	± ---	2 PLACES	± 0.30	± ---	1 PLACE	± 0.30	± ---	ANGULAR ± 1 °			DIMENSION STYLE	SCALE	DESIGN UNITS	THIRD ANGLE PROJECTION
			mm	INCH																				
	4 PLACES		± ---	± ---																				
	3 PLACES		± ---	± ---																				
2 PLACES	± 0.30	± ---																						
1 PLACE	± 0.30	± ---																						
ANGULAR ± 1 °																								
DESCRIPTION	MM ONLY	3:1	METRIC																					
REV	DRAWN BY	DATE	TITLE																					
	JS. KANG	1999/08/16	.250 RECEPTACLE HSG-4P																					
	CHECKED BY	DATE																						
	BK. CHOI	1999/08/16																						
	APPROVED BY	DATE																						
	CW. LEE	1999/08/16																						
	MATERIAL NO.	DOCUMENT NO.																						
	SEE TABLE		MOLEX INCORPORATED																					
			SD-35955-0410																					
			SHEET NO.																					
			1 OF 01																					
	SIZE	THIS DRAWING CONTAINS INFORMATION THAT IS PROPRIETARY TO MOLEX INCORPORATED AND SHOULD NOT BE USED WITHOUT WRITTEN PERMISSION																						
	A3																							