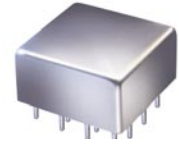


Plug-In Bias-Tee

PBTC-3GW+

50Ω Wideband 0.1 to 3000 MHz



CASE STYLE: C07
PRICE: \$49.20 ea. QTY. (1-9)

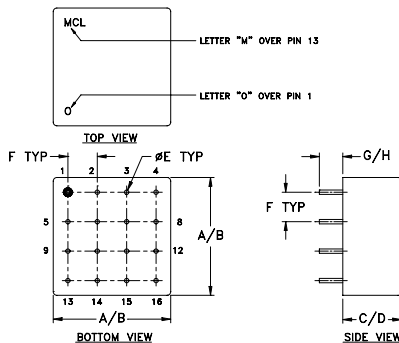
Maximum Ratings

Operating Temperature	-55°C to 100°C
Storage Temperature	-55°C to 100°C
RF Power	30dBm max.
Voltage at DC port	30V max.
Input Current	500mA
DC resistance from DC to RF&DC port	4.5 ohm typ.

Pin Connections

RF	9
RF&DC	12
DC	3
GROUND	all other pins
CASE GROUND	1,2,4,5,7,8,11,13,14,15,16

Outline Drawing



Outline Dimensions (inch/mm)

A	B	C	D
.770	.810	.380	.410
19.56	20.57	9.65	10.41

Features

- wideband, 0.1 to 3000 MHz
- low insertion loss, 0.6 dB typ.
- hermetic, metal case

Applications

- biasing laser diodes
- biasing amplifiers
- biasing active antennas
- DC return
- DC blocking
- military, hi-rel application

+ RoHS compliant in accordance with EU Directive (2002/95/EC)

The +Suffix has been added in order to identify RoHS Compliance. See our web site for RoHS Compliance methodologies and qualifications.

Bias-Tee Electrical Specifications

FREQUENCY (MHz)	INSERTION LOSS* (dB)						ISOLATION* (dB) (RF port to DC port) (RF&DC port to DC port)						VSWR** (:1)						
	L		M		U		L		M		U		L		M		U		
f_L	f_U	Typ.	Max.	Typ.	Max.	Typ.	Max.	Typ.	Min.	Typ.	Min.	Typ.	Min.	Typ.	Max.	Typ.	Max.	Typ.	Max.
0.1	3000	0.15	0.8	0.3	1.5	1.0	2.5	25	15	30	20	35	20	1.06	1.6	1.13	1.66	1.6	1.7

L= low range (f_L to 10 f_L) M= mid range (10 f_L to $f_U/2$) U= upper range ($f_U/2$ to f_U)

* Insertion Loss 1 dB Max. and Isolation 7 dB Min. 0.1 to 0.3 MHz

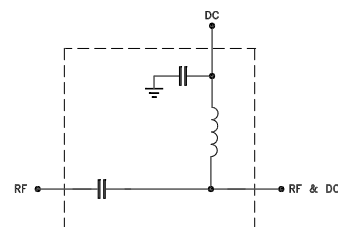
Insertion Loss and Isolation are guaranteed up to 20 dBm-RF power and 200mA DC current.

** VSWR measured with open and short at DC port.

Typical Performance Data

Freq. (MHz)	Pin (dBm)	INSERTION LOSS (dB) with Current						ISOLATION (dB) (Pin= -10dBm) with current						VSWR (:1)
		0mA	20mA	50mA	100mA	150mA	200mA	10mA	20mA	50mA	100mA	150mA	200mA	
0.10	19.91	0.01	0.22	0.24	0.34	0.47	0.60	16.77	16.38	15.07	12.23	10.85	10.02	1.19
0.15	19.90	0.03	0.20	0.21	0.27	0.33	0.41	19.48	18.98	17.69	14.60	12.92	11.80	1.13
1.00	19.20	0.02	0.15	0.15	0.15	0.15	0.16	30.27	30.21	29.76	28.40	27.06	25.91	1.02
5.05	19.91	0.07	0.17	0.18	0.18	0.18	0.18	32.03	31.73	31.24	31.01	31.05	31.05	1.02
7.53	19.82	0.09	0.17	0.18	0.20	0.20	0.19	31.82	31.38	30.76	30.39	30.35	30.49	1.02
10.00	19.79	0.11	0.15	0.16	0.17	0.17	0.18	31.50	31.01	29.96	29.26	29.22	29.42	1.02
15.00	21.83	0.14	0.18	0.18	0.21	0.21	0.15	31.07	30.42	28.95	27.53	27.08	27.10	1.02
141.86	20.57	0.21	0.25	0.25	0.26	0.27	0.23	33.27	33.24	33.17	33.06	32.90	32.75	1.02
276.19	20.83	0.33	0.37	0.36	0.34	0.36	0.36	33.42	33.39	33.57	33.84	33.99	34.10	1.01
403.05	20.98	0.21	0.25	0.22	0.24	0.27	0.22	40.88	41.42	41.56	42.17	41.76	42.32	1.04
791.10	20.55	0.24	0.27	0.28	0.30	0.32	0.29	35.93	36.18	36.01	35.69	35.76	36.04	1.13
925.43	20.02	0.26	0.28	0.26	0.29	0.33	0.29	30.93	30.83	30.98	30.93	31.00	31.02	1.16
1000.00	19.70	0.33	0.34	0.35	0.35	0.38	0.38	35.63	35.41	35.62	35.80	35.55	35.86	1.17
1313.48	19.25	0.38	0.42	0.41	0.43	0.44	0.44	37.38	37.67	37.35	37.42	38.05	38.00	1.26
1701.53	20.14	1.45	1.46	1.50	1.49	1.50	1.45	34.14	33.79	33.97	34.12	34.23	34.09	1.38
1962.71	19.86	0.81	0.79	0.85	0.85	0.84	0.81	34.01	34.04	34.25	34.12	34.13	34.42	1.40
2350.76	20.42	0.74	0.80	0.80	0.78	0.80	0.76	39.61	38.75	38.52	38.86	38.96	38.75	1.50
2477.63	20.80	1.34	1.38	1.41	1.42	1.41	1.36	37.19	37.73	37.85	36.87	37.46	36.98	1.48
2873.14	21.04	1.83	1.92	1.93	1.91	1.93	1.93	40.84	40.10	39.86	41.04	40.12	39.78	1.39
3000.00	21.16	1.80	1.91	1.92	1.90	1.92	1.91	34.25	34.42	34.80	37.52	35.61	34.79	1.31

Electrical Schematic



Mini-Circuits®
ISO 9001 ISO 14001 CERTIFIED

ALL NEW
minicircuits.com

P.O. Box 350166, Brooklyn, New York 11235-0003 (718) 934-4500 Fax (718) 332-4661 For detailed performance specs & shopping online see Mini-Circuits web site



The Design Engineers Search Engine Provides ACTUAL Data Instantly From MINI-CIRCUITS At: www.minicircuits.com

RF/IF MICROWAVE COMPONENTS

REV. B
M113397
PBTC-3GW+
DJ/RS/CP/AM
080430
Page 1 of 2

