

PLEASE CHECK WWW.MOLEX.COM FOR LATEST PART INFORMATION

Part Number: **0476571000**
Status: **Active**
Overview: slimline serial ata odd connectors
Description: 1.27mm (.050") Pitch Removeable Slimline Serial ATA Receptacle for Optical Disk Drive, Right Angle, Bottom Mount, Gold (Au) Flash Plating, Leadfree

Documents:

[3D Model](#) [Product Specification PS-47657-001 \(PDF\)](#)
[Drawing \(PDF\)](#) [RoHS Certificate of Compliance \(PDF\)](#)

General

Product Family	PCB Receptacles
Series	<u>47657</u>
Application	Board-to-Board
Overview	<u>slimline serial ata odd connectors</u>
Product Name	Serial ATA, Slimline Serial ATA

Physical

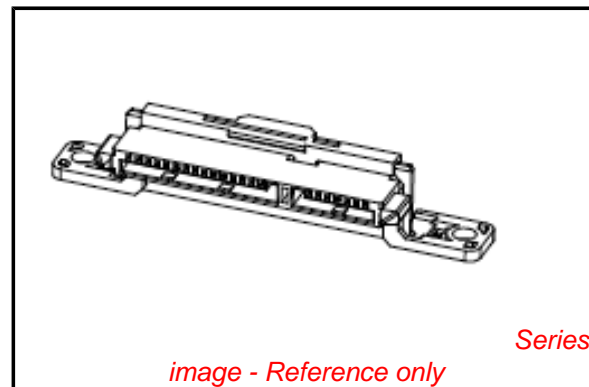
Circuits (Loaded)	22
Circuits (maximum)	22
Color - Resin	Black
Durability (mating cycles max)	500
Glow-Wire Compliant	No
Guide to Mating Part	Yes
Keying to Mating Part	Yes
Lock to Mating Part	Yes
Material - Metal	Copper Alloy
Material - Plating Mating	Gold
Material - Resin	High Temperature Thermoplastic
Number of Rows	1
Orientation	Right Angle
PCB Locator	No
PCB Retention	Yes
Packaging Type	Tray
Pitch - Mating Interface (in)	0.050 In
Pitch - Mating Interface (mm)	1.27 mm
Pitch - Term. Interface (in)	0.050 In
Pitch - Term. Interface (mm)	1.27 mm
Plating min: Mating (µin)	2
Plating min: Mating (µm)	0.05
Polarized to Mating Part	Yes
Polarized to PCB	Yes
Robotic Placement	Pick and Place Cap
Stackable	No
Surface Mount Compatible (SMC)	Yes
Temperature Range - Operating	-35°C to +85°C
Termination Interface: Style	Screw or Lug

Electrical

Current - Maximum per Contact	1.5A
Grounding to PCB	Yes
Voltage - Maximum	15V DC

Solder Process Data

Duration at Max. Process Temperature (seconds)	10
Lead-free Process Capability	Reflow Capable (SMT only)



EU RoHS

ELV and RoHS Compliant
REACH SVHC
 Not Reviewed
Halogen-Free Status

China RoHS



Need more information on product environmental compliance?

Email productcompliance@molex.com
 For a multiple part number RoHS Certificate of Compliance, [click here](#)

Please visit the [Contact Us](#) section for any non-product compliance questions.

Search Parts in this Series

47657Series

Mates With

476572000 Header

Max. Cycles at Max. Process Temperature	1
Process Temperature max. C	260

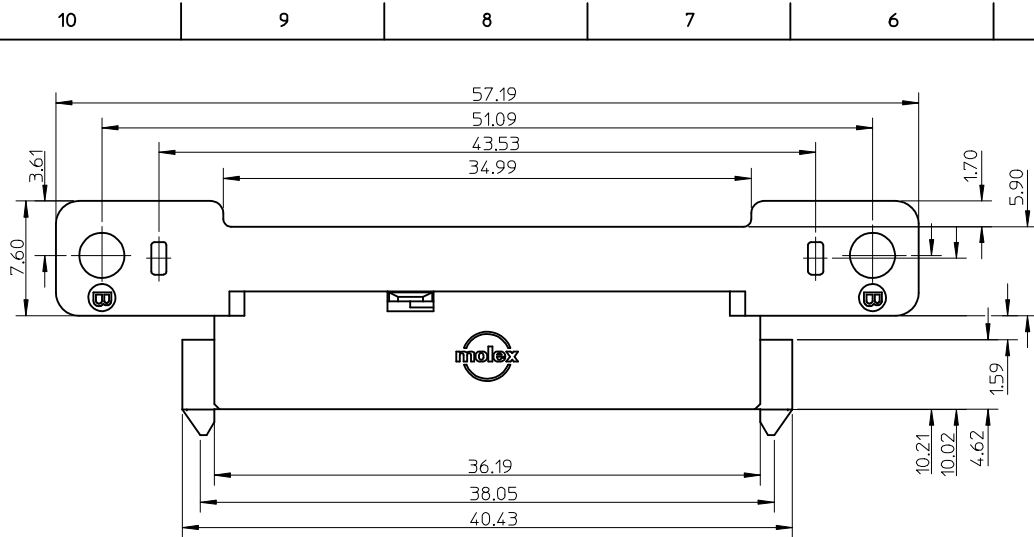
Material Info

Reference - Drawing Numbers

Packaging Specification	PK-47657-001
Product Specification	PS-47657-001
Sales Drawing	SD-47657-100

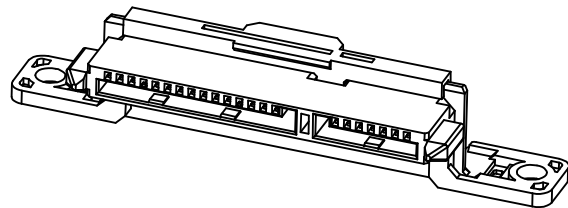
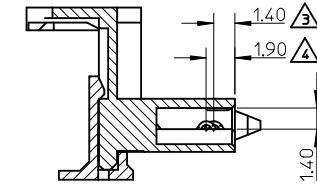
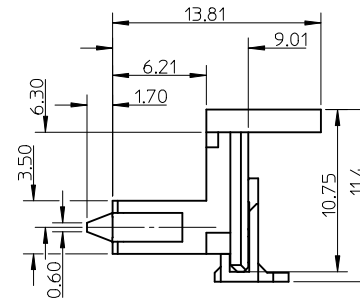
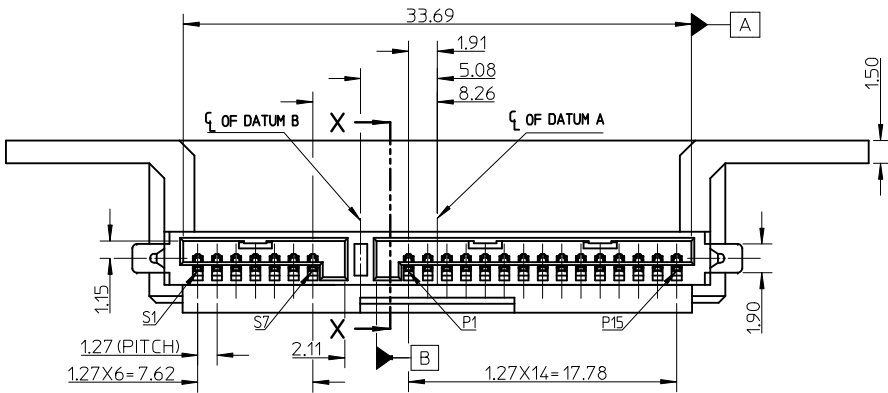
This document was generated on 05/31/2010

PLEASE CHECK WWW.MOLEX.COM FOR LATEST PART INFORMATION



NOTES :

- MATERIAL:
HOUSING: LCP, UL94V-0, BLACK
TERMINAL: COPPER ALLOY
- PLATING:
TERMINAL:
CONTACT AREA: GOLD PLATING, DETAIL REFER TO CHART.
UNDERPLATING: NICKEL PLATING 1.25 MICRONS MIN.
- FOR P4 AND P12 PIN.
- FOR ALL OTHER PINS EXCEPT FOR P2 AND P12.
- PACKAGE: TRAY, PK-47657-100.
- PRODUCT SPEC: PS-47657-001.
- SCREW TORQUE SPEC: 2.0 kgf.cm REF.
- THE PRODUCT COMPLIANT TO RoHS DIRECTIVES 2002/95/EC AND ELV 2000/53/EC.



P/N	GOLD PLATING SPEC
47657-1200	0.76 MICRONS MIN
47657-1100	0.38 MICRONS MIN
47657-1000	Au FLASH

ib_frame_A3_P_AM_T
Rev. E 2006/04/15

REV	DESCRIPTION
A	NEW RELEASE

QUALITY SYMBOLS	
	=0
	=0

GENERAL TOLERANCES (UNLESS SPECIFIED)		
	mm	INCH
4 PLACES	± ---	± ---
3 PLACES	± ---	± ---
2 PLACES	± 0.15	± ---
1 PLACE	± 0.25	± ---
ANGULAR ± 3 °		

DIMENSION STYLE		SCALE	DESIGN UNITS	THIRD ANGLE PROJECTION
MM ONLY		4:1	METRIC	
DRAWN BY: DIXON LI		TITLE: REMOVABLE SATA RECEPTACLE CONNECTOR BOTTOM MOUNT TYPE		
DATE: 2008/07/02		MOLEX INCORPORATED		
CHECKED BY: STARY SONG		DOCUMENT NO. SD-47657-100		
DATE: 2008/07/02		SHEET NO. 1 OF 1		
APPROVED BY: HARVEY WANG		THIS DRAWING CONTAINS INFORMATION THAT IS PROPRIETARY TO MOLEX INCORPORATED AND SHOULD NOT BE USED WITHOUT WRITTEN PERMISSION		
DATE: 2008/07/02				
MATERIAL NO. 47657-1000				