

MR4027

Automotive Transient Voltage Suppressor

20 V – 27 V

Designed for Automotive Applications (Alternator) requiring Reverse Avalanche Capability for use as Transient Voltage Suppressor. Developed to suppress transients in automotive systems, this device operates in the forward mode as Standard Rectifier or in Reverse as Transient Voltage Suppressor for Centralized Protection.

For further information referring to Mounting or Operating Conditions, contact your nearest ON Semiconductor Sales Representative.

Mechanical Characteristics

- Finish: 100% Tin Plated
All External Surfaces are Corrosion Resistant
- Weight: 2.6 Grams (Approximately)

Packaging/Labeling

- Two Sealed Bags into a Cardboard Box
- Device Number Labeled on the Bag

Marking

- The Devices are Laser Marked on the Epoxy Surface

MAXIMUM RATING

Rating	Symbol	Value	Unit
DC Blocking Voltage	V_R	18	Volts
Average Forward Current (Single Phase, Resistive Load, $T_C = 185^\circ\text{C}$)	I_O	40	Amps
Peak Repetitive Reverse Surge Current (Time Constant = 10 ms, $T_C = 25^\circ\text{C}$) (Time Constant = 80 ms, $T_C = 25^\circ\text{C}$)	I_{RSM} I_{RSM}	110 50	Amps
Non-Repetitive Peak Surge Current (Halfwave, Single Phase, 50 Hz)	I_{FSM}	500	Amps
Storage Temperature Range	T_{stg}	-40 to +200	$^\circ\text{C}$
Maximum Operating Junction Temperature	T_J	200	$^\circ\text{C}$



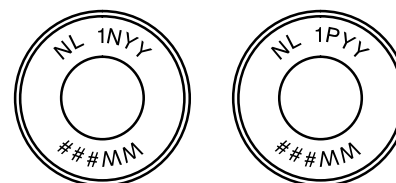
ON Semiconductor™

<http://onsemi.com>



N SUFFIX
(Anode to Cup)
P SUFFIX
(Cathode to Cup)
CASE 193A

MARKING DIAGRAM



NL = Location Code
1N or 1P = Device Code and Polarity
YY = Year
WW = Work Week
= Assembly Lot Number

ORDERING INFORMATION

Device	Package	Shipping
MR4027N	Button Can	5000 Units/Box
MR4027P	Button Can	5000 Units/Box

THERMAL CHARACTERISTICS

Characteristic	Symbol	Value	Unit
Thermal Resistance Junction to Case	$R_{\theta JC}$	0.4	$^{\circ}C/W$

ELECTRICAL CHARACTERISTICS

Characteristic	Symbol	Min	Max	Unit
Instantaneous Forward Voltage (Note 1.) ($I_F = 100$ Amps, $T_C = 25^{\circ}C$)	V_F	-	1.1	Volts
Reverse Current (Note 1.) ($V_R = 16$ Vdc, $T_C = 25^{\circ}C$)	I_R	-	1.0	μA
Breakdown Voltage (Note 1.) ($I_R = 100$ mA, $T_C = 25^{\circ}C$)	$V_{(BR)}$	20	27	Volts
Breakdown Voltage ($I_R = 80$ Amps, $T_C = 25^{\circ}C$, $PW = 80 \mu s$) ($I_R = 80$ Amps, $T_C = 85^{\circ}C$, $PW = 80 \mu s$)	$V_{(BR)}$	-	35 37	Volts
Breakdown Voltage Temperature Coefficient	$V_{(BR)TC}$	0.095*		$\%/^{\circ}C$
Forward Voltage Temperature Coefficient ($I_F = 10$ mA)	V_{FTC}	-2*		$mV/^{\circ}C$

1. Pulse Test: Pulse Width < 300 μs , Duty Cycle < 2%.

*Typical

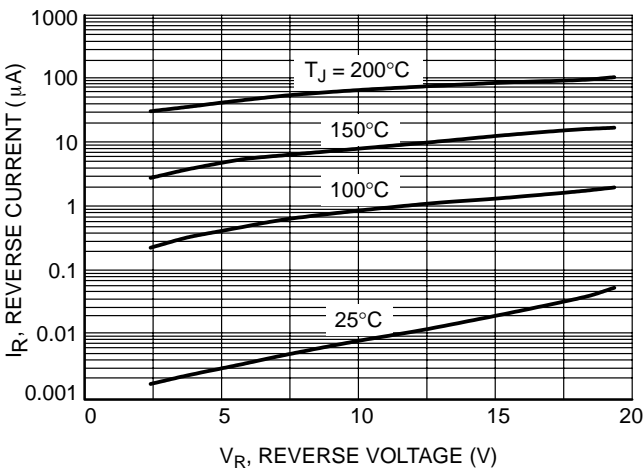


Figure 1. Typical Reverse Current

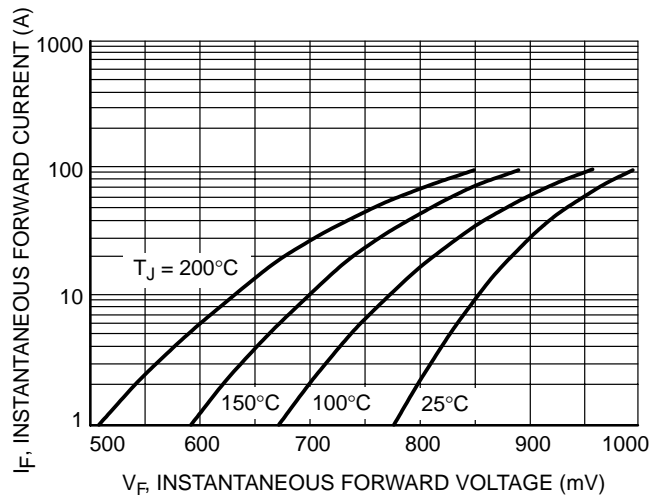


Figure 2. Typical Forward Voltage

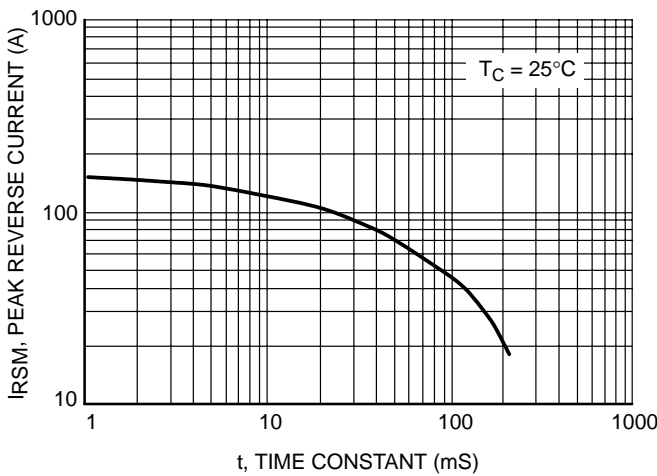


Figure 3. Maximum Peak Reverse Current

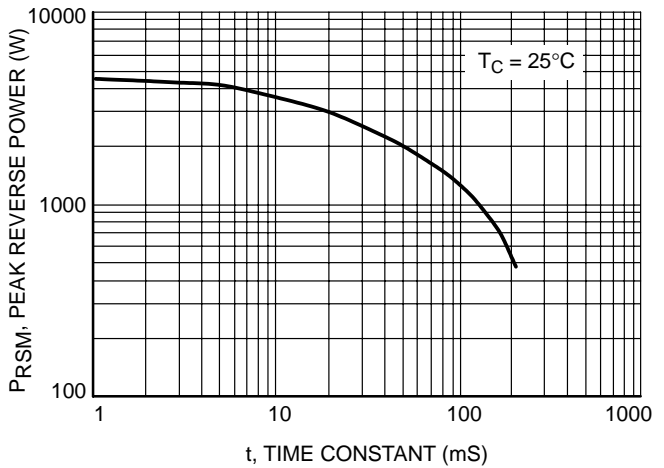


Figure 4. Maximum Peak Reverse Power

MR4027

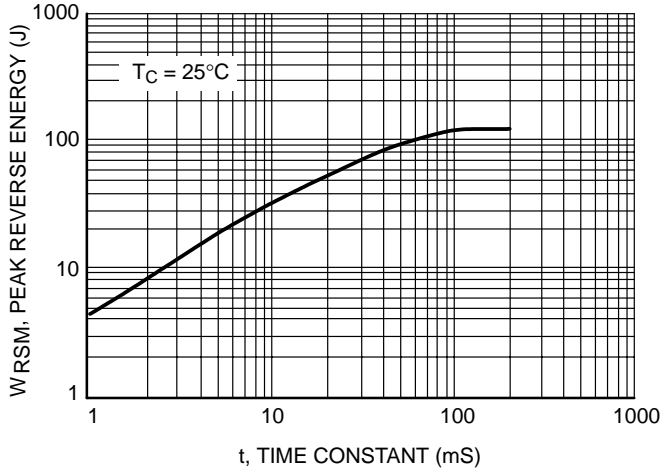


Figure 5. Maximum Reverse Energy

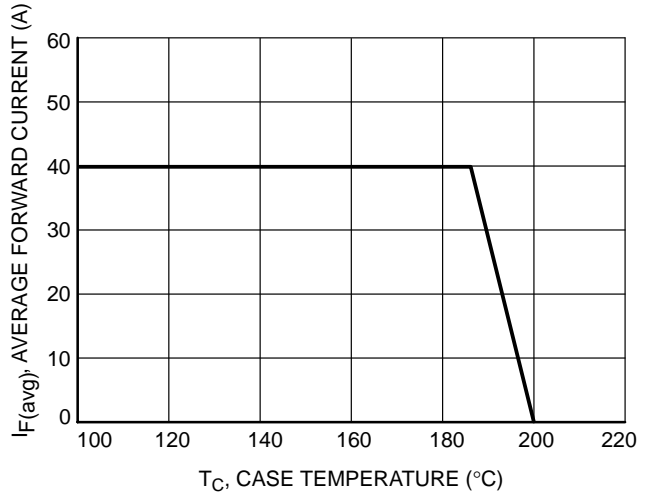


Figure 6. Maximum Current Rating

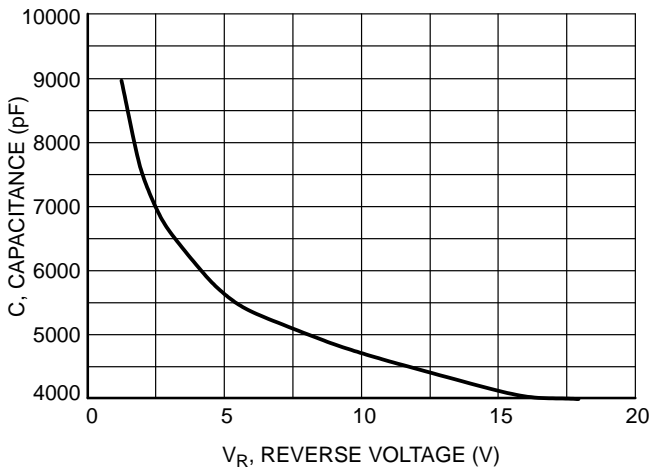


Figure 7. Typical Capacitance

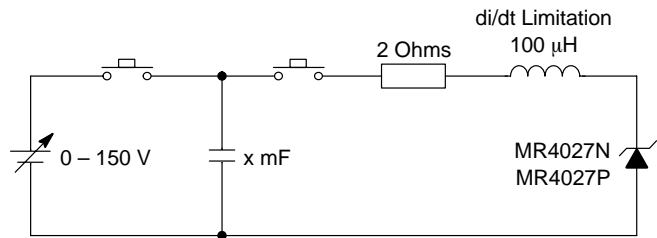


Figure 8. Load Dump Test Circuit

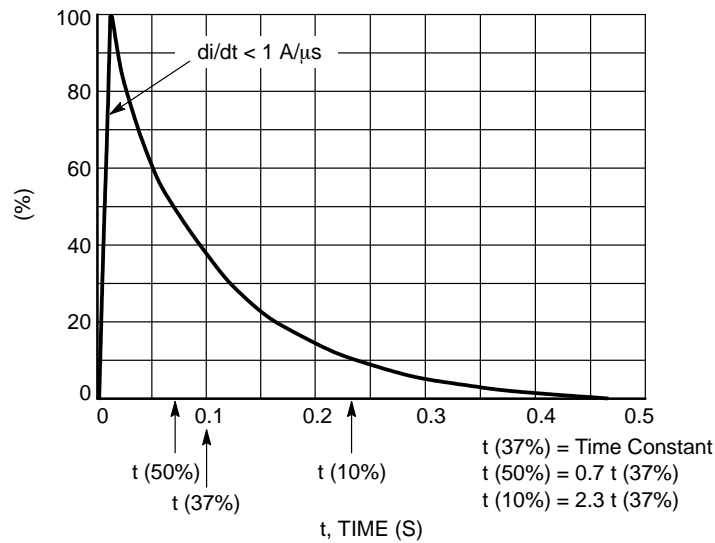
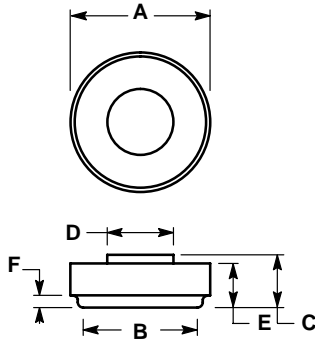


Figure 9. Load Dump Pulse Current

MR4027


PACKAGE DIMENSIONS

N SUFFIX
(Anode to Cup)
P SUFFIX
(Cathode to Cup)
CASE 193A-02
ISSUE A



- NOTES:
1. DIMENSIONING AND TOLERANCING PER ANSI Y14.5M, 1982.
2. CONTROLLING DIMENSION: MILLIMETER.

DIM	MILLIMETERS		INCHES	
	MIN	MAX	MIN	MAX
A	11.4	11.6	0.449	0.457
B	9.3	9.7	0.366	0.382
C	4.3	4.9	0.169	0.193
D	5.4	5.6	0.213	0.220
E	3.6	4.2	0.142	0.165
F	1.0	2.0	0.039	0.079

ON Semiconductor and  are trademarks of Semiconductor Components Industries, LLC (SCILLC). SCILLC reserves the right to make changes without further notice to any products herein. SCILLC makes no warranty, representation or guarantee regarding the suitability of its products for any particular purpose, nor does SCILLC assume any liability arising out of the application or use of any product or circuit, and specifically disclaims any and all liability, including without limitation special, consequential or incidental damages. "Typical" parameters which may be provided in SCILLC data sheets and/or specifications can and do vary in different applications and actual performance may vary over time. All operating parameters, including "Typicals" must be validated for each customer application by customer's technical experts. SCILLC does not convey any license under its patent rights nor the rights of others. SCILLC products are not designed, intended, or authorized for use as components in systems intended for surgical implant into the body, or other applications intended to support or sustain life, or for any other application in which the failure of the SCILLC product could create a situation where personal injury or death may occur. Should Buyer purchase or use SCILLC products for any such unintended or unauthorized application, Buyer shall indemnify and hold SCILLC and its officers, employees, subsidiaries, affiliates, and distributors harmless against all claims, costs, damages, and expenses, and reasonable attorney fees arising out of, directly or indirectly, any claim of personal injury or death associated with such unintended or unauthorized use, even if such claim alleges that SCILLC was negligent regarding the design or manufacture of the part. SCILLC is an Equal Opportunity/Affirmative Action Employer.

PUBLICATION ORDERING INFORMATION

NORTH AMERICA Literature Fulfillment:

Literature Distribution Center for ON Semiconductor
P.O. Box 5163, Denver, Colorado 80217 USA
Phone: 303-675-2175 or 800-344-3860 Toll Free USA/Canada
Fax: 303-675-2176 or 800-344-3867 Toll Free USA/Canada
Email: ONlit@hibbertco.com
Fax Response Line: 303-675-2167 or 800-344-3810 Toll Free USA/Canada

N. American Technical Support: 800-282-9855 Toll Free USA/Canada

EUROPE: LDC for ON Semiconductor – European Support

German Phone: (+1) 303-308-7140 (Mon-Fri 2:30pm to 7:00pm CET)
Email: ONlit-german@hibbertco.com
French Phone: (+1) 303-308-7141 (Mon-Fri 2:00pm to 7:00pm CET)
Email: ONlit-french@hibbertco.com
English Phone: (+1) 303-308-7142 (Mon-Fri 12:00pm to 5:00pm GMT)
Email: ONlit@hibbertco.com

EUROPEAN TOLL-FREE ACCESS*: 00-800-4422-3781

*Available from Germany, France, Italy, UK, Ireland

CENTRAL/SOUTH AMERICA:

Spanish Phone: 303-308-7143 (Mon-Fri 8:00am to 5:00pm MST)
Email: ONlit-spanish@hibbertco.com
Toll-Free from Mexico: Dial 01-800-288-2872 for Access –
then Dial 866-297-9322

ASIA/PACIFIC: LDC for ON Semiconductor – Asia Support

Phone: 303-675-2121 (Tue-Fri 9:00am to 1:00pm, Hong Kong Time)
Toll Free from Hong Kong & Singapore:
001-800-4422-3781

Email: ONlit-asia@hibbertco.com

JAPAN: ON Semiconductor, Japan Customer Focus Center

4-32-1 Nishi-Gotanda, Shinagawa-ku, Tokyo, Japan 141-0031
Phone: 81-3-5740-2700
Email: r14525@onsemi.com

ON Semiconductor Website: <http://onsemi.com>

For additional information, please contact your local Sales Representative.