

PLEASE CHECK WWW.MOLEX.COM FOR LATEST PART INFORMATION

Part Number: [0039314088](#)
Status: **Active**
Overview: [minifit_jr](#)
Description: 4.20mm (.165") Pitch Mini-Fit Jr.™ Header, Dual Row, Right Angle, with PCB Mounting Flanges, 8 Circuits, PA Polyamide Nylon 6/6 94V-2, Tin (Sn) over Nickel (Ni)

Documents:

[3D Model](#) [RoHS Certificate of Compliance \(PDF\)](#)
[Drawing \(PDF\)](#)

Agency Certification

CSA	LR19980
TUV	R72081037
UL	E29179

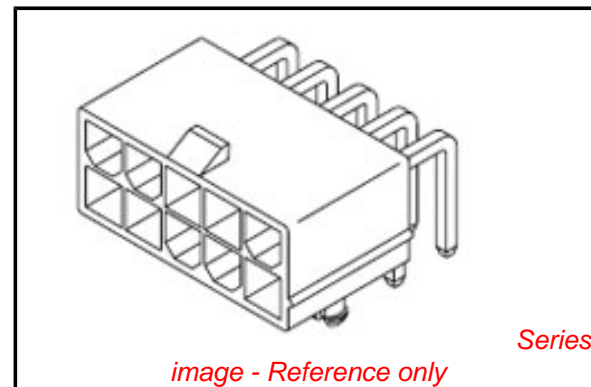
General

Product Family	PCB Headers
Series	5569
Application	Wire-to-Board
Comments	Current = 13A max. per circuit when header is mated to a receptacle loaded with 45750 Mini-Fit Plus HCS™ Crimp Terminal Crimped to to 16 AWG wire. . See Molex Product specification PS-5556-001 for additional current de-rating information.

Overview	minifit_jr
Product Name	Mini-Fit Jr.™

Physical

Breakaway	No
Circuits (Loaded)	8
Circuits (maximum)	8
Circuits Detail	8
Color - Resin	Natural
Durability (mating cycles max)	30
First Mate / Last Break	No
Flammability	94V-2
Glow-Wire Compliant	No
Guide to Mating Part	No
Keying to Mating Part	None
Lock to Mating Part	Yes
Material - Metal	Brass
Material - Plating Mating	Tin
Material - Plating Termination	Nickel
Material - Resin	Nylon
Number of Rows	2
Orientation	Right Angle
PC Tail Length (in)	0.142 In
PC Tail Length (mm)	3.60 mm
PCB Locator	Yes
PCB Retention	Yes
PCB Thickness Recommended (in)	0.070 In
PCB Thickness Recommended (mm)	1.78 mm
Packaging Type	Bag
Pitch - Mating Interface (in)	0.165 In
Pitch - Mating Interface (mm)	4.20 mm
Pitch - Term. Interface (in)	0.165 In



EU RoHS **China RoHS**

Compliance Status

Not Reviewed

REACH SVHC

Not Reviewed

Halogen-Free

Status

Not Reviewed

Need more information on product environmental compliance?

Email productcompliance@molex.com
 For a multiple part number RoHS Certificate of Compliance, [click here](#)

Please visit the [Contact Us](#) section for any non-product compliance questions.

Search Parts in this Series

[5569Series](#)

Mates With

[5557](#) Mini-Fit Jr.™ Receptacle Housing

Pitch - Term. Interface (mm)	4.20 mm
Polarized to Mating Part	Yes
Polarized to PCB	Yes
Shrouded	Fully
Stackable	No
Surface Mount Compatible (SMC)	No
Temperature Range - Operating	-40°C to +105°C
Termination Interface: Style	Through Hole

Electrical

Current - Maximum per Contact	13A
Voltage - Maximum	600V

Material Info

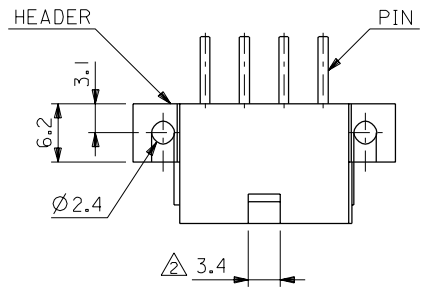
Old Part Number	5569-2408A1S
-----------------	--------------

Reference - Drawing Numbers

Sales Drawing	SD-5569-NA*-*
---------------	---------------

This document was generated on 05/21/2010

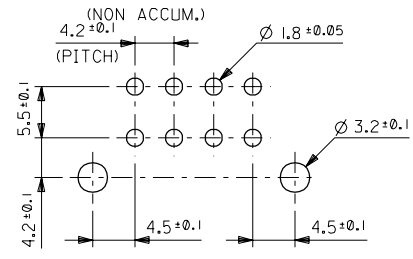
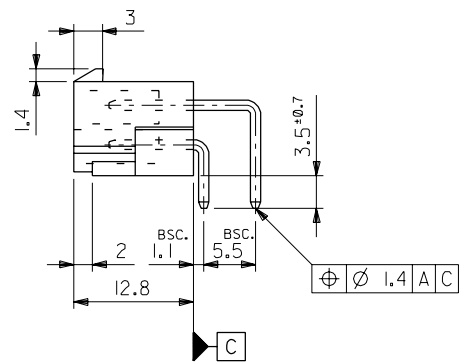
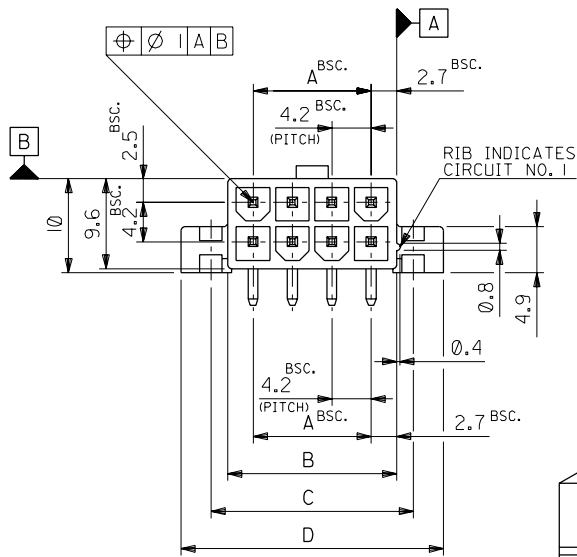
PLEASE CHECK WWW.MOLEX.COM FOR LATEST PART INFORMATION



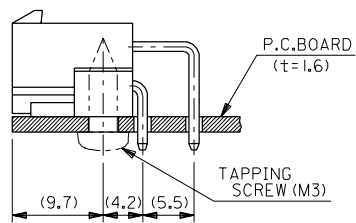
NOTES

1. MATES WITH : 5557 SERIES
- △ IN CASE OF 2 CIRCUITS HEADER, THIS DIMENSION SHOULD BE 4.2mm.
3. MATERIAL & FINISH

ENG. NO.	HEADER MATERIAL	PIN MATERIAL	FINISH OF PIN
5569-NA1	NYLON 66, UL94V-2	BRASS (1.07 SQUARE)	TIN OVER COPPER
↑ -NA1-210	NYLON 66, UL94V-0		
-NA1-310	G.F. 30% PCT, UL94V-0		
-NAG1	NYLON 66, UL94V-2		GOLD 0.76μm MIN. OVER NICKEL 1.27μm MIN.
-NAG1-210	NYLON 66, UL94V-0		
-NAG1-310	G.F. 30% PCT, UL94V-0		
-NAG3	NYLON 66, UL94V-2		GOLD 1.27μm MIN. OVER NICKEL 1.27μm MIN.
-NAG3-210	NYLON 66, UL94V-0		
-NAG3-310	G.F. 30% PCT, UL94V-0		
-NAIS	NYLON 66, UL94V-2		TIN 2.54μm MIN. OVER NICKEL 1.27μm MIN.
↓ -NAIS-210	NYLON 66, UL94V-0		
5569-NAIS-310	G.F. 30% PCT, UL94V-0		



RECOMMENDED P.C. BOARD PATTERN



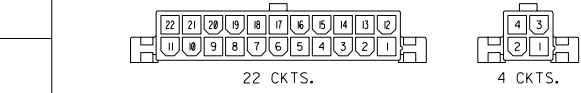
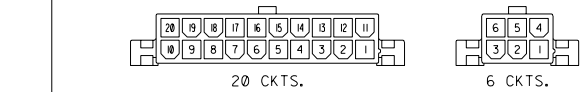
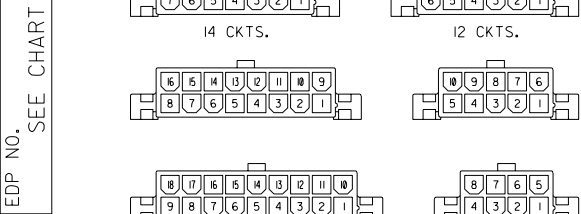
RECOMMENDED INSTALLATION PATTERN

61.6	55.2	51.6	46.2	24
57.4	51	47.4	42	22
53.2	46.8	43.2	37.8	20
49	42.6	39	33.6	18
44.8	38.4	34.8	29.4	16
40.6	34.2	30.6	25.2	14
36.4	30	26.4	21	12
32.2	25.8	22.2	16.8	10
28	21.6	18	12.6	8
23.8	17.4	13.8	8.4	6
19.6	13.2	9.6	4.2	4
15.4	9	5.4	—	2
D	C	B	A	NO. OF CKTS.

角度 ANGLE	公差	記号 LTR	変更内容 REVISION RECORD	DR. CHK.	日付 DATE
±3°		J	REVISED (J00695)	H.H.	'90/6/23
30°以上 OVER	+0.4	H	REVISED (J00638)	H.H.	'90/6/8
10°以上 30°未滿 UNDER	+0.3	G	REVISED & REDRAWN (J00449)	H.H.	'90/4/17
10°未滿 UNDER	+0.2				

材料 MATERIAL	SEE NOTE 3	MOLEX-JAPAN CO.,LTD. 日本モレックス株式会社
仕上げ FINISH	SEE NOTE 3	
適用電線範囲 WIRE RANGE	— — —	EDP. NO. SEE SHEET 2 OF 2
被覆外径 INS. RANGE	— — —	ENG. NO. SHEET 1 OF 2 REV J
DRAWN BY '90/4/17 H.HIRAMOTO	CHK'D BY '91/07/04 M.FUKUSHIMA	TITLE 名称 NEW MINI. FIT CONN. RIGHT ANGLE HEADER ASS'Y WITH FLANGE
APP'D BY '91/07/04 M.ENOMOTO	尺度 SCALE 2 - 1	

ENG. NO.
SD-5569-NA***



CIRCUIT SIZE LAYOUT
(SCALE : 1-1)

DIMENSIONS IN METRIC DO NOT SCALE DRAWING

NOT TOOLED	5569-24AIS-310	NOT TOOLED	5569-24IG3-310	NOT TOOLED	5569-24AGI-310	NOT TOOLED	5569-24AI-310	24
↑	↑ -22AIS-310	↑	↑ -22AIG3-310	↑	↑ -22AGI-310	↑	↑ -22AI-310	22
	-20AIS-310		-20AIG3-310		-20AGI-310		-20AI-310	20
	-18AIS-310		-18AIG3-310		-18AGI-310		-18AI-310	18
	-16AIS-310		-16AIG3-310		-16AGI-310		-16AI-310	16
	-14AIS-310		-14AIG3-310		-14AGI-310		-14AI-310	14
	-12AIS-310		-12AIG3-310		-12AGI-310		-12AI-310	12
	-10AIS-310		-10AIG3-310		-10AGI-310		-10AI-310	10
	-08AIS-310		-08AIG3-310		-08AGI-310		-08AI-310	8
	-06AIS-310		-06AIG3-310		-06AGI-310		-06AI-310	6
↓	↓ -04AIS-310	↓	↓ -04AIG3-310	↓	↓ -04AGI-310	↓	↓ -04AI-310	4
NOT TOOLED	5569-02AIS-310	NOT TOOLED	5569-02AIG3-310	NOT TOOLED	5569-02AGI-310	NOT TOOLED	5569-02AI-310	2
EDP NO.	ENG. NO.	EDP NO.	ENG. NO.	EDP NO.	ENG. NO.	EDP NO.	ENG. NO.	CKT. SIZE
5569-NA IS-310		5569-NA IG3-310		5569-NAG I-310		5569-NA I-310		
39-31-4249	5569-24AIS-210	NOT TOOLED	5569-24IG3-210	39-29-4249	5569-24AGI-210	39-29-1247	5569-24AI-210	24
↑ -4229	↑ -22AIS-210	↑	↑ -22AIG3-210	↑ -4229	↑ -22AGI-210	↑ -1227	↑ -22AI-210	22
-4209	-20AIS-210		-20AIG3-210	-4209	-20AGI-210	-1207	-20AI-210	20
-4189	-18AIS-210		-18AIG3-210	-4189	-18AGI-210	-1187	-18AI-210	18
-4169	-16AIS-210		-16AIG3-210	-4169	-16AGI-210	-1167	-16AI-210	16
-4149	-14AIS-210		-14AIG3-210	-4149	-14AGI-210	-1147	-14AI-210	14
-4129	-12AIS-210		-12AIG3-210	-4129	-12AGI-210	-1127	-12AI-210	12
-4109	-10AIS-210		-10AIG3-210	-4109	-10AGI-210	-1107	-10AI-210	10
-4089	-08AIS-210		-08AIG3-210	-4089	-08AGI-210	-1087	-08AI-210	8
-4069	-06AIS-210		-06AIG3-210	-4069	-06AGI-210	-1067	-06AI-210	6
↓ -4049	↓ -04AIS-210	↓	↓ -04AIG3-210	↓ -4049	↓ -04AGI-210	↓ -1047	↓ -04AI-210	4
39-31-4029	5569-02AIS-210	NOT TOOLED	5569-02AIG3-210	39-29-4029	5569-02AGI-210	39-29-1027	5569-02AI-210	2
EDP NO.	ENG. NO.	EDP NO.	ENG. NO.	EDP NO.	ENG. NO.	EDP NO.	ENG. NO.	CKT. SIZE
5569-NA IS-210		5569-NA IG3-210		5569-NAG I-210		5569-NA I-210		
39-31-4248	5569-24AIS	NOT TOOLED	5569-24IG3	39-29-5243	5569-24AGI	39-29-1248	5569-24AI	24
↑ -4228	↑ -22AIS	↑	↑ -22AIG3	↑ -5223	↑ -22AGI	↑ -1228	↑ -22AI	22
-4208	-20AIS		-20AIG3	-5203	-20AGI	-1208	-20AI	20
-4188	-18AIS		-18AIG3	-5183	-18AGI	-1188	-18AI	18
-4168	-16AIS		-16AIG3	-5163	-16AGI	-1168	-16AI	16
-4148	-14AIS		-14AIG3	-5143	-14AGI	-1148	-14AI	14
-4128	-12AIS		-12AIG3	-5123	-12AGI	-1128	-12AI	12
-4108	-10AIS		-10AIG3	-5103	-10AGI	-1108	-10AI	10
-4088	-08AIS		-08AIG3	-5083	-08AGI	-1088	-08AI	8
-4068	-06AIS		-06AIG3	-5063	-06AGI	-1068	-06AI	6
↓ -4048	↓ -04AIS	↓	↓ -04AIG3	↓ -5043	↓ -04AGI	↓ -1048	↓ -04AI	4
39-31-4028	5569-02AIS	NOT TOOLED	5569-02AIG3	39-29-5023	5569-02AGI	39-29-1028	5569-02AI	2
EDP NO.	ENG. NO.	EDP NO.	ENG. NO.	EDP NO.	ENG. NO.	EDP NO.	ENG. NO.	CKT. SIZE
5569-NA IS		5569-NA IG3		5569-NAG I		5569-NA I		

材料 MATERIAL		SEE NOTE 3		MOLEX-JAPAN CO.,LTD. 日本モレックス株式会社	
仕上げ FINISH		SEE NOTE 3		EDP. NO.	
適用電線範囲 WIRE RANGE		— — —		SEE CHART	
被覆外径 INS. RANGE		— — —		ENG. NO. SHEET 2 OF 2	
DRAWN BY '90/4/17 H.HIRAMOTO		CHK'D BY '90/7/04 M.FUKUSHIMA		REV J	
APP'D BY '91/07/04 M.ENOMOTO		尺度 SCALE — — —		TITLE 名称 NEW MINI. FIT CONN. RIGHT ANGLE HEADER ASS'Y WITH FLANGE	

角度 ANGLE	+3°	J	SEE SHEET 1 OF 2	H.H	'90/6/23
30 以上 OVER	+0.3	H	SEE SHEET 1 OF 2	H.H	'90/6/8
10 以上 OVER 30 未満 UNDER	+0.25	G	SEE SHEET 1 OF 2	H.H	'90/4/17
10 未満 UNDER	+0.2			H.H	'90/4/17
一般公差 GENERAL TOLERANCES		記号 TR	変更内容 REVISION RECORD	DR. CHK.	日付 DATE
REVISE ONLY ON CAD SYSTEM					