

**PLEASE CHECK WWW.MOLEX.COM FOR LATEST PART INFORMATION**

**Part Number:** [0873691300](#)  
**Status:** **Active**  
**Description:** 2.00mm (.079") Pitch Crimp Housing, Single Row, 13 Circuits

**Documents:**

[3D Model](#) [RoHS Certificate of Compliance \(PDF\)](#)  
[Drawing \(PDF\)](#)

**Agency Certification**

CSA LR19980  
 UL E29179

**General**

Product Family Crimp Housings  
 Series [87369](#)  
 Product Name N/A

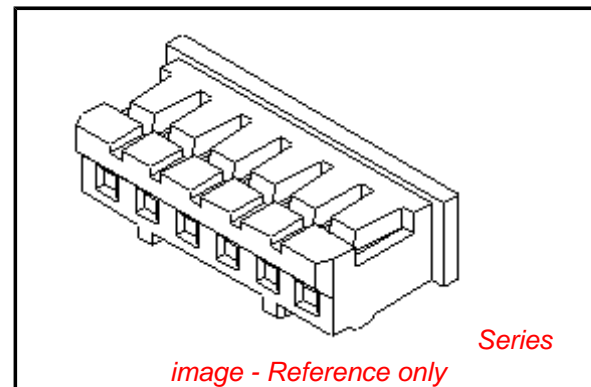
**Physical**

Circuits (maximum) 13  
 Color - Resin Natural  
 Flammability 94V-0  
 Gender Female  
 Glow-Wire Compliant No  
 Lock to Mating Part Yes  
 Material - Resin Nylon  
 Number of Rows 1  
 Packaging Type Bag  
 Panel Mount No  
 Pitch - Mating Interface (in) 0.079 In  
 Pitch - Mating Interface (mm) 2.00 mm  
 Stackable No  
 Temperature Range - Operating -25°C to +85°C

**Material Info**

**Reference - Drawing Numbers**

Product Specification RPS-87369-001  
 Sales Drawing SD-87369-\*\*0\*



**EU RoHS**

**ELV and RoHS  
 Compliant**  
**REACH SVHC  
 Contains SVHC: No  
 Halogen-Free  
 Status**

**China RoHS**



**Need more information on product  
 environmental compliance?**

Email [productcompliance@molex.com](mailto:productcompliance@molex.com)  
 For a multiple part number RoHS Certificate of  
 Compliance, [click here](#)

Please visit the [Contact Us](#) section for any  
 non-product compliance questions.

**Search Parts in this Series**

[87369Series](#)

**Mates With**

[89400](#) Vertical Header, [89401](#) Right Angle  
 Header

**Use With**

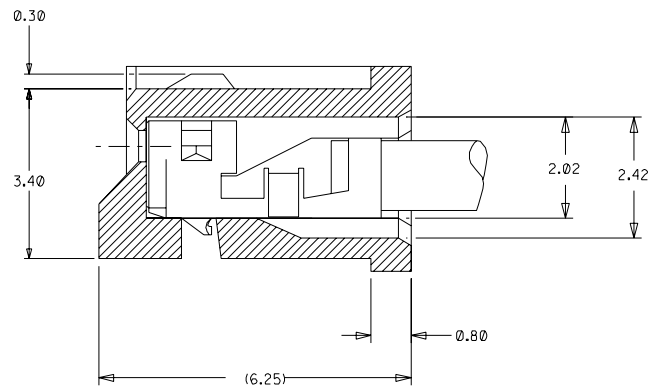
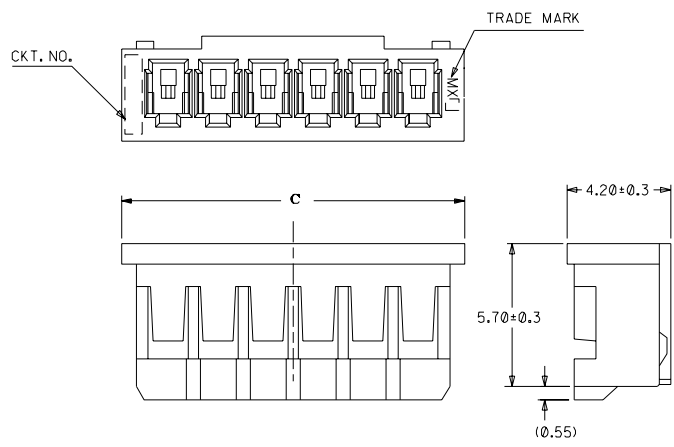
[50212](#) Crimp Terminals. [104440](#) 2.00mm  
 (.079") Pitch Crimp Terminals

DWG. NO. SD 87369-\*\*-00

CAD FILE S87369.DGN

▽

DO NOT SCALE DRAWING



**TERMINAL ASSEMBLY DRAWING**  
(10:1)

**PART NO.LEGEND**

87369 - \*\* 0 \*

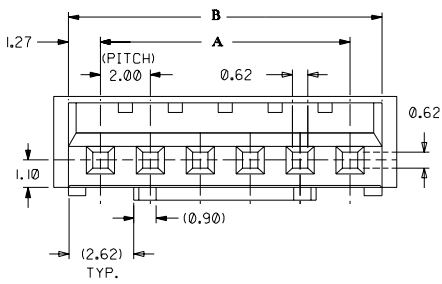
CKT SIZE ———— COLOR OPTION

- 0 - NATURAL
- 1 - BLACK
- 2 - RED
- 3 - YELLOW
- 4 - BLUE
- 5 - GREEN

**NOTES**

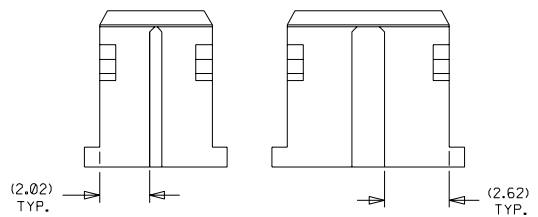
1. APPLICABLE TERMINAL :50212-8\*00
2. MATERIAL : NYLON 66, UL94V-0 NATURAL
3. MATES WITH 89400-\*\*-10/\*\*20 & 89401-\*\*-10

C	B	A	ENG NO.	CKT
33.74	32.54	30	87369-160*	16
31.74	30.54	28	87369-150*	15
29.74	28.54	26	87369-140*	14
27.74	26.54	24	87369-130*	13
25.74	24.54	22	87369-120*	12
23.74	22.54	20	87369-110*	11
21.74	20.54	18	87369-100*	10
19.74	18.54	16	87369-090*	9
17.74	16.54	14	87369-080*	8
15.74	14.54	12	87369-070*	7
13.74	12.54	10	87369-060*	6
11.74	10.54	8	87369-050*	5
9.74	8.54	6	87369-040*	4
7.74	6.54	4	87369-030*	3
5.74	4.54	2	87369-020*	2



**IN CASE OF  
2 CIRCUIT HSG.**

**IN CASE OF  
3 CIRCUIT HSG.**



**UNITS : MM**

				MATERIAL : SEE NOTES		<b>MOLEX SINGAPORE PTE LTD</b> SHEET 1 OF 1	
B5	REVISE PART NO. LEGEND & NOTE 3 PER ECN 1999-0061	-	SAK	980814	GENERAL TOLERANCES ± 0.20/0.008		
B4	REL 87369-**-05 (GREEN) AS PER PDR* 98-06-0330 (AS PER ECN* S1998-0617)	-	SEE TOH	980623	DWG. NO.: SD   87369-**-0*		
B3	ADD COLOR OPTION REPLACE SD-87369-**-0*	S60565	SAK	GMS	960618	TITLE : 2.0 MM PITCH WIRE TO BOARD CONN. RECEPTACLE	
LTR	REVISION RECORD	ECN	DR	CHK	DATE	DRAWN BY CLEE 920305 APPR'D BY ROY 920326	CHK'D BY JOEY 920326 SCALE 5:1
<b>REVISE ONLY ON CAD SYSTEM</b>							