

6. ELECTRICAL CHARACTERISTICS :

Part No.	Inductance (μ H)	Test Freq. (Hz)	RDC (m Ω) Typ.	Isat (A) Max.	Irms (A) Max.
SWDC0603-2R0MF	2.0 \pm 20%	100K	19.1	2.997	3.30
SWDC0603-2R7MF	2.7 \pm 20%	100K	22.0	2.691	3.12
SWDC0603-3R3MF	3.3 \pm 20%	100K	25.7	2.573	2.81
SWDC0603-4R7MF	4.7 \pm 20%	100K	31.6	2.084	2.51
SWDC0603-6R2MF	6.2 \pm 20%	100K	35.0	1.835	2.41
SWDC0603-8R2MF	8.2 \pm 20%	100K	43.5	1.542	2.11
SWDC0603-100MF	10.0 \pm 20%	100K	49.4	1.491	1.97
SWDC0603-120MF	12.0 \pm 20%	100K	62.0	1.282	1.73
SWDC0603-150MF	15.0 \pm 20%	100K	77.0	1.103	1.54
SWDC0603-180MF	18.0 \pm 20%	100K	81.5	1.046	1.52
SWDC0603-220MF	22.0 \pm 20%	100K	106.0	0.968	1.29
SWDC0603-270MF	27.0 \pm 20%	100K	140.0	0.821	1.11
SWDC0603-330MF	33.0 \pm 20%	100K	162.0	0.755	1.02
SWDC0603-390MF	39.0 \pm 20%	100K	192.0	0.700	0.96
SWDC0603-470MF	47.0 \pm 20%	100K	209.0	0.677	0.89
SWDC0603-560MF	56.0 \pm 20%	100K	257.0	0.602	0.80
SWDC0603-680MF	68.0 \pm 20%	100K	320.0	0.556	0.71
SWDC0603-820MF	82.0 \pm 20%	100K	420.0	0.468	0.61
SWDC0603-101MF	100.0 \pm 20%	100K	477.0	0.449	0.57
SWDC0603-151MF	150.0 \pm 20%	100K	664.0	0.367	0.48



RoHS Compliant

NOTE : Specifications subject to change without notice. Please check our website for latest information.

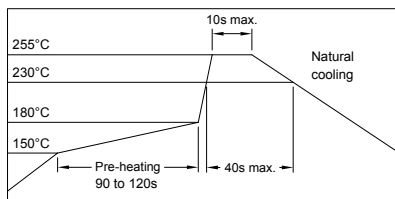
05.05.2008



Tai-Tech Advanced Electronics (S) Pte Ltd

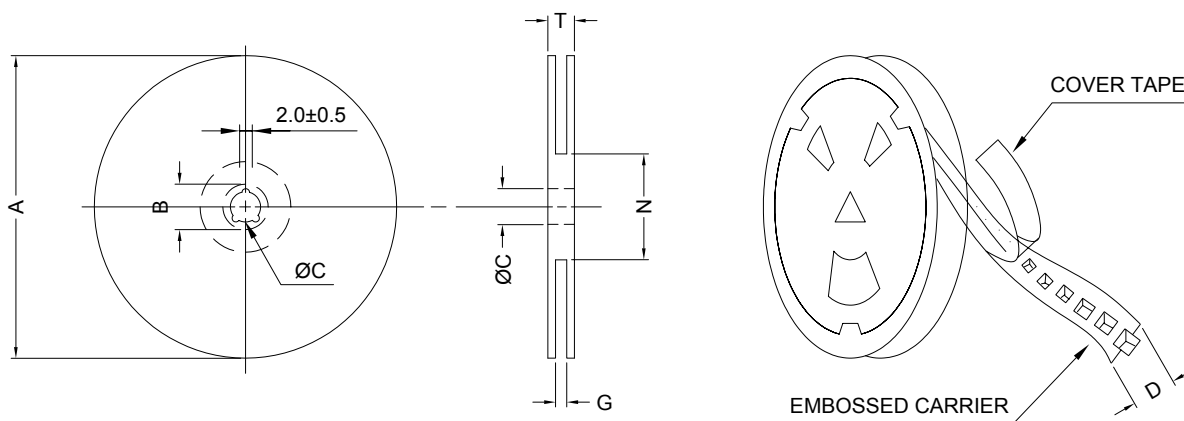
PG. 2

RECOMMENDED SOLDERING CONDITIONS REFLOW SOLDERINGS

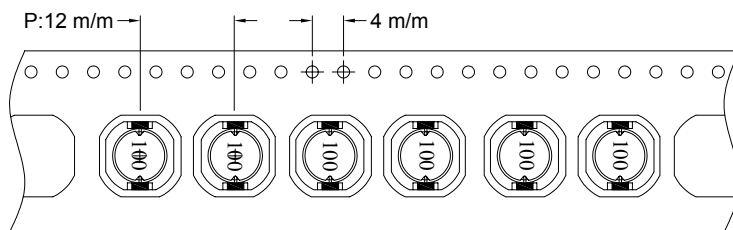


7. PACKAGING INFORMATION :

(1) CONFIGURATION



* CARRIER TAPE WIDTH : D



(2) DIMENSIONS

Unit:m/m

STYLE	A	B	C	D	G	N	T
13-16	330	21±0.8	13	16	18 ⁺⁰	50 ⁻⁰	22.4

(3) Q'TY & G.W. PER PACKAGE

SERIES	INNER : REEL			OUTER : CARTON		
	Q'TY (PCS)	G.W. (gw)	STYLE	Q'TY (PCS)	G.W. (Kg)	SIZE (cm)
SWDC0603	1000	800	13-16	6000	9.2	40 x 40 x 24



RoHS Compliant

NOTE : Specifications subject to change without notice. Please check our website for latest information.

05.05.2008



Tai-Tech Advanced Electronics (S) Pte Ltd

PG. 3

8. RELIABILITY AND TEST CONDITION :

TEST ITEM	SPECIFICATION	TEST CONDITION
SOLDERABILITY	MORE THAN 90% OF THE TERMINAL ELECTRODE SHALL BE COVERED WITH FRESH SOLDER.	PREHEAT : 125±25°C FOR 60 SECONDS SOLDER : H63A (EUTECTIC SOLDER) SOLDER TEMP. : 230±5°C FLUX : ROSIN DIP TIME : 4±1 SECONDS
THERMAL SHOCK TEST (TEMP. CYCLE)	INDUCTANCE SHALL NOT CHANGE MORE THAN ±20%	ROOM TEMP. → -25±2°C 15 MINUTES 30 MINUTES ROOM TEMP. → 85±2°C 15 MINUTES 30 MINUTES TOTAL : 50 CYCLES
HUMIDITY RESISTANCE TEST		TEMPERATURE : 40±2°C HUMIDITY : 90 ~ 95% APPLIED CURRENT : PER SPEC. TIME : 500 HOURS
HIGH TEMP. RESISTANCE TEST		TEMPERATURE : 85±2°C APPLIED CURRENT : PER SPEC. TIME : 500 HOURS

**RoHS Compliant**

NOTE : Specifications subject to change without notice. Please check our website for latest information.

05.05.2008

**Tai-Tech Advanced Electronics (S) Pte Ltd**

PG. 4

9. UL CARD :

OBMW2		September 28, 2000			
Magnet Wire - Component					
DONGGUAN PROSPERITY ELECTRIC WIRE & CABLE CO					E196072
SHIN SHUI KOU ADMINISTRATIVE DISTRICT CHAO TOU					
TOWN, DONGGUAN GUANGDONG CHINA					
Mtl	Mark	Coat Typ		ANSI	Temp
Dsg	Dsg	BC	OC	Type	Class
PEW	---	Polyester		MW5	155
EIW	---	Polyesterimide		MW74-C	200
UEW	---	Polyurethane		MW5	130
UEW-NY	---	Polyurethane		Polyamide	MW28C
Marking: Company name and material designation on packages or reels.					
See General Information Preceding These Recognitions					
For use only in equipment where the acceptability of the combination is determined by Underwriters Laboratories Inc.					
10/20/2000		Underwriters Laboratories Inc.		Card 1 of 1	

**RoHS Compliant**

NOTE : Specifications subject to change without notice. Please check our website for latest information.

05.05.2008

**Tai-Tech Advanced Electronics (S) Pte Ltd**

PG. 5