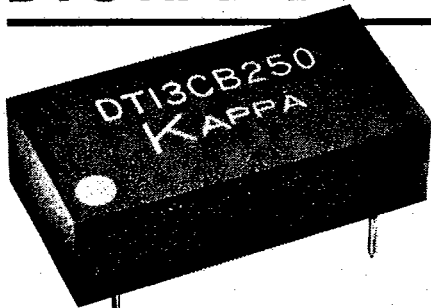
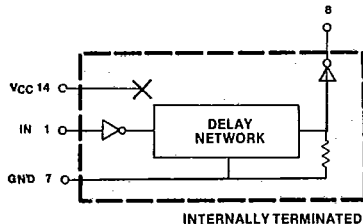


SERIES DT13 TTL SCHOTTKY (14-PIN) DIGITAL DELAY LINE



FEATURES

- TTL Schottky interfaced
- Standard 14-Pin Package
- Risettime: 4 ns max (3 ns typ.)
- Operating Temperature Range: 0°C to +70°C



SERIES DT13 SPECIFICATIONS

Delay Times (ns): 25, 50, 100, 150, 200, 250, 300, 350, 400, 450, 500, 600, 700, 800, 900, 1000 (other values available upon request).

Delay Tolerance: $\pm 5\%$ or ± 2 ns, whichever is greater (lighter tolerances upon request).

INPUT TEST CONDITIONS

Pulse Voltage: 3.2V
 Risettime: ≤ 2.0 ns
 Supply Current: 75 mA max
 Pulse Width: 40% minimum of total delay
 Duty Cycle: 50% max

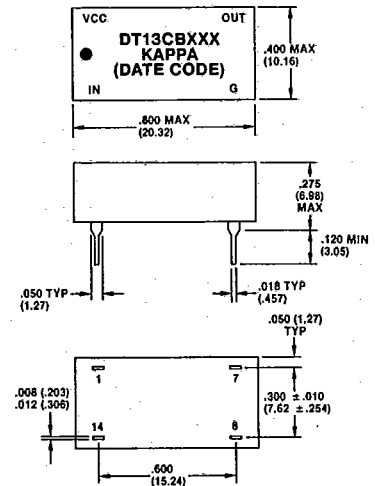
ELECTRICAL CHARACTERISTICS

Computer-Grade
 Supply Voltage: 5.0V ± 0.25 V
 Logic 1:
 Input Voltage: 2.0V min
 Input Current: 50 μ A max
 Output Voltage: 2.7V min
 Logic 0:
 Input Voltage: 0.8V max
 Input Current: -2.0 mA max
 Output Voltage: 0.5V max

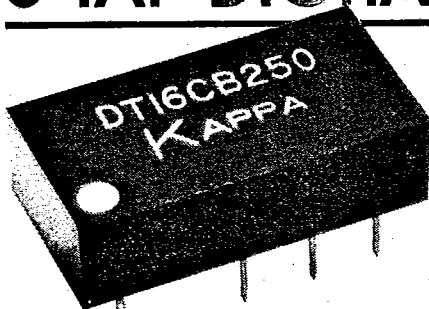
DRIVE CAPABILITIES

Logic 1 Output: 10 TTL Loads/Unit max
 Logic 0 Output: 10 TTL Loads/Unit max

MARKINGS AND DIMENSIONS, in (mm)

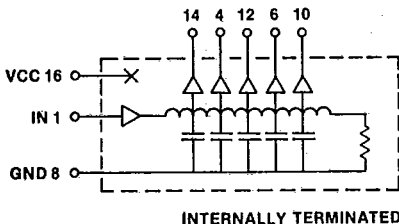


SERIES DT16 TTL SCHOTTKY (16-PIN) 5-TAP DIGITAL DELAY LINE



FEATURES

- TTL Schottky Interfaced
- Standard 16-Pin Package
- Risettime: 4 ns max (3 ns typ.)
- Operating Temperature Range: 0°C to +70°C
- 5 equally-spaced taps



SERIES DT16 SPECIFICATIONS

Total Delay Times (ns): 25, 50, 100, 150, 200, 250, 300, 350, 400, 450, 500, 600, 700, 800, 900, 1000 (other values available upon request).

Delay Tolerance: $\pm 5\%$ or ± 2 ns, whichever is greater; referenced from input.

Tap Delay: 20% of nominal Total Delay Time.

INPUT TEST CONDITIONS

Pulse Voltage: 3.2V
 Risettime: ≤ 2.0 ns
 Supply Current: 75 mA max
 Pulse Width: 40% minimum of total delay
 Duty Cycle: 50% max

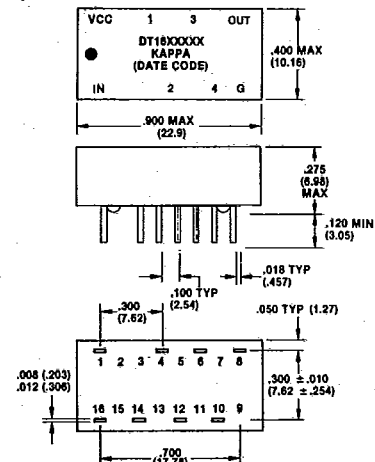
ELECTRICAL CHARACTERISTICS

Computer-Grade
 Supply Voltage: 5.0V ± 0.25 V
 Logic 1:
 Input Voltage: 2.0V min
 Input Current: 50 μ A max
 Output Voltage: 2.7V min
 Logic 0:
 Input Voltage: 0.8V max
 Input Current: -2.0 mA max
 Output Voltage: 0.5V max

DRIVE CAPABILITIES

Logic 0 Output: 10 TTL Loads/Tap max
 20 TTL Loads/Unit max
 Logic 1 Output: 20 TTL Loads/Unit max

MARKINGS AND DIMENSIONS, in (mm)



PART NUMBER EXAMPLE DT13 (16) CB 250

Basic Series #
 Delay time: Expressed in nanoseconds (ns).
 First two digits are significant figures. Last digit specifies number of zeros to follow.



U.S.A. Factory Direct: 1443 Pinewood Street, Rahway, NJ 07065, Phone (201) 396-9400, Toll Free 800-223-0603, Telex: 130081, KAPPA RHWW
 West Coast Office: 13455 Ventura Blvd. #220, Sherman Oaks, CA 91423, (818) 995-2401. West Coast Distributor: Phone (213) 283-2058.