

# Crystal band stop filter

## QBS127.0-2000/01



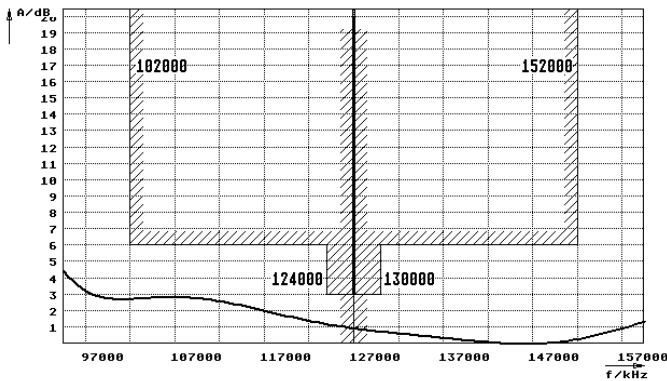
### Application

- 2 pol filter
- i.f.- filter
- use in mobile and stationary transceivers

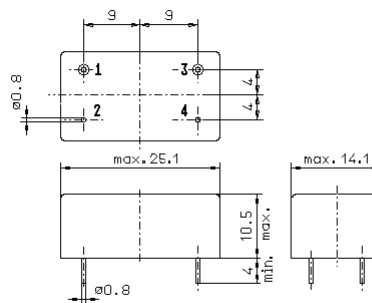
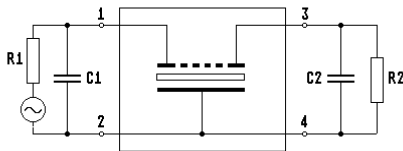
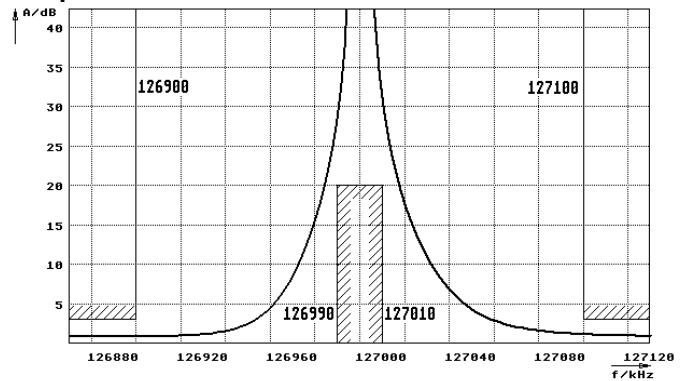
Limiting values		Unit	Value
Nominal frequency	$f_0$	MHz	127.0
Insertion loss	at smallest attenuation in pass band	dB	< 6.0
Pass band at 3.0dB		kHz	$\pm 100 \dots 3000$
Pass band at 6.0 dB		MHz	$\pm 3.0 \dots 25$
Ripple in 6dB pass band		dB	< 6.0 except spurious
Stop band attenuation	$f_0 \pm 10 \text{ kHz}$	dB	> 20
Terminating impedance Z			
R1  C1		Ohm/pF	50    0
R2  C2		Ohm/pF	50    0
Operating temp. range		°C	-20... +70
Storage temp. range		°C	-35... +85
Environment conditions			according to CF001

### Characteristics QBS127.0-2000/01

#### Pass band



#### Stop band



GM3.1

- Pin connections:
- 1 Input
  - 2 Ground-Input
  - 3 Output
  - 4 Ground-Output