

Resonator Inlet Filters

Inlet filter with resonator giving good performance for both common mode and differential mode interference, with a metal case to give a good shielding effect.

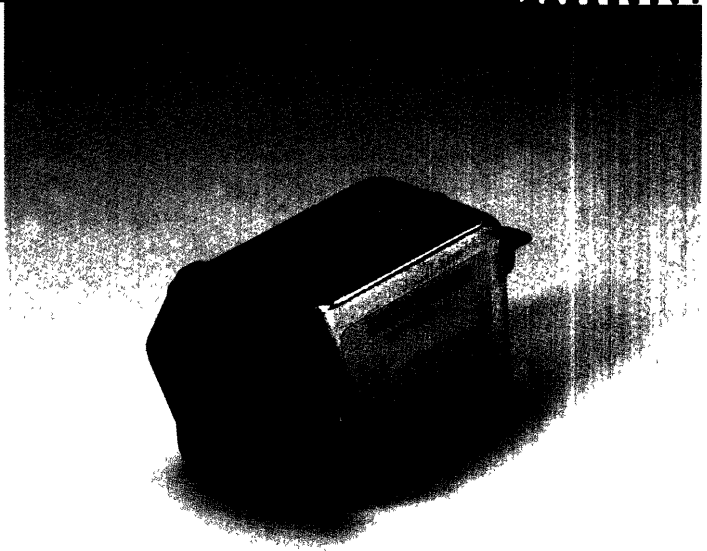
Meets overvoltage category II of IEC 664 and complies with IEC 950.

Typical applications are communications equipment, personal computers and computer peripherals, digital equipment, measuring and testing equipment, monitors and display units.

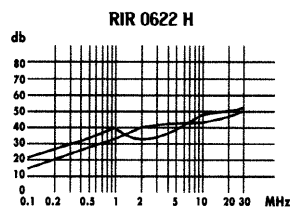
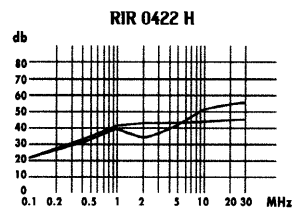
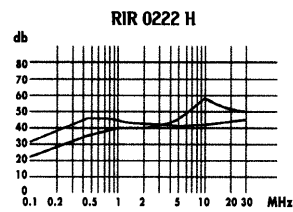
Approvals:



Rated Voltage: 250VAC
 Frequency: 50/60Hz
 Temperature Range: -25°C - + 85°C

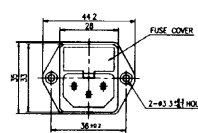


Insertion Loss Curves

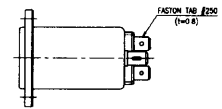
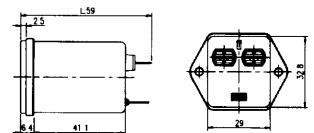
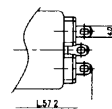


■ - Common Mode
 ■ - Differential Mode

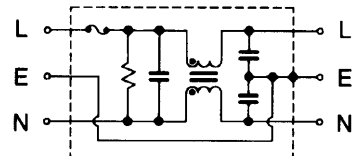
Dimensions



* Alternate Terminal for IR ***** Soldering Lug(Ø8)



Electrical Schematic



Technical Data

| Type | Current @ 40°C | Max leakage current @ 250V AC 50HZ | Terminations |
|------------|----------------|------------------------------------|--------------|
| RIR 0222 H | 2A | 0.35mA | Faston Tags |
| RIR 0422 H | 4A | 0.35mA | Faston Tags |
| RIR 0622 H | 6A | 0.35mA | Faston Tags |

