

PLEASE CHECK WWW.MOLEX.COM FOR LATEST PART INFORMATION

Part Number: **0508028000**
Status: **Active**
Description: 2.50mm (.098") Pitch Crimp Terminal, Female, Phosphor Bronze, Reel

Documents:

[3D Model](#) [Product Specification PS-51191-003 \(PDF\)](#)
[Drawing \(PDF\)](#) [RoHS Certificate of Compliance \(PDF\)](#)
[Product Specification PS-51191-002 \(PDF\)](#)

General

Product Family Crimp Terminals
 Series 50802
 Crimp Quality Equipment Yes
 Product Name N/A

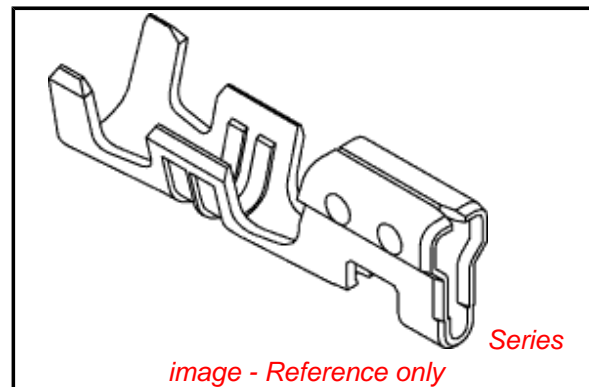
Physical

Gender Female
 Material - Metal Phosphor Bronze
 Material - Plating Mating Tin
 Material - Plating Termination Tin
 Packaging Type Reel
 Plating min: Mating (µin) 36
 Plating min: Mating (µm) 0.90
 Plating min: Termination (µin) 36
 Plating min: Termination (µm) 0.90
 Termination Interface: Style Crimp or Compression
 Wire Insulation Diameter 1.15-1.90mm (.045-.075")
 Wire Size AWG 22, 24, 26, 28
 Wire Size mm² N/A

Material Info

Reference - Drawing Numbers

Product Specification PS-51191-002, PS-51191-003, RPS-51191-006,
 RPS-51191-007
 Sales Drawing SD-50802-002



EU RoHS

**ELV and RoHS
 Compliant**
**REACH SVHC
 Contains SVHC: No**
**Halogen-Free
 Status**

China RoHS



**Need more information on product
 environmental compliance?**

Email productcompliance@molex.com
 For a multiple part number RoHS Certificate of
 Compliance, [click here](#)

Please visit the [Contact Us](#) section for any
 non-product compliance questions.

Search Parts in this Series

50802Series

Mates With

5241

Use With

51191

Application Tooling | FAQ

*Tooling specifications and manuals are
 found by selecting the products below.
 Crimp Height Specifications are then
 contained in the Application Tooling
 Specification document.*

Global

Description	Product #
Hand Crimp Tool	<u>0638115200</u>
T2 Terminator	<u>0639104600</u>
Tooling Die	
FineAdjust™	<u>0639004600</u>
Applicator for SPOX™ Wire-to- Board and Wire-to-	

Wire Terminal, 22-28
AWG

Japan

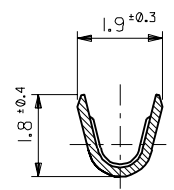
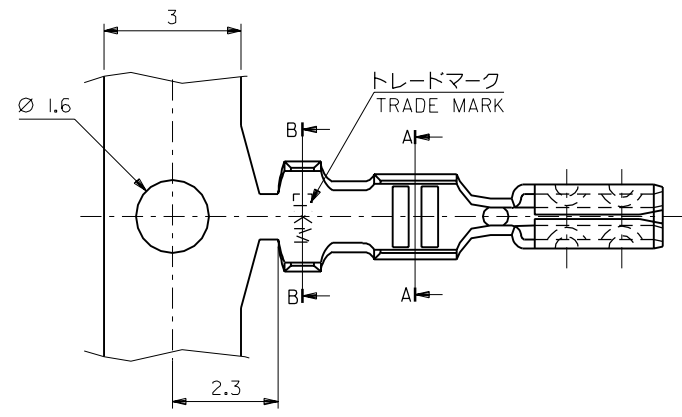
Description

Product #

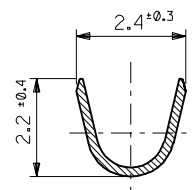
Applicator for M211A 0011260023
Bench Press, 22-28
AWG, for 5103
and 50802 Crimp
Terminal

This document was generated on 04/16/2010

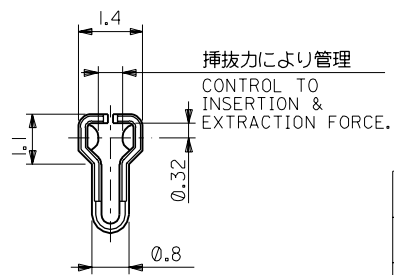
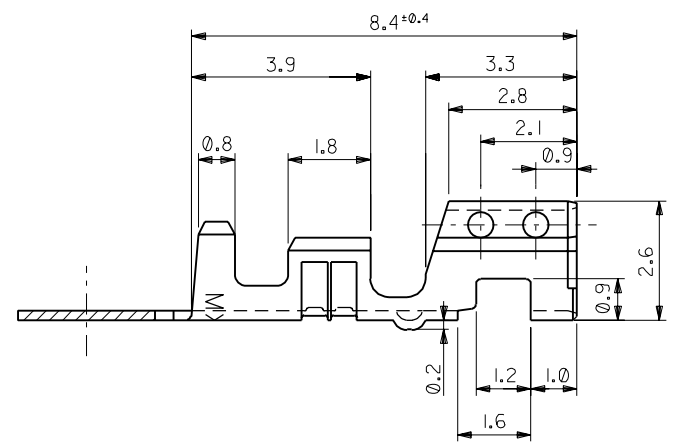
PLEASE CHECK WWW.MOLEX.COM FOR LATEST PART INFORMATION



断面 A-A
SECT. A-A



断面 B-B
SECT. B-B



注記 NOTES:
1. 適合ハウジング: 51191-***00
APPLICABLE HOUSING: 51191-***00

錫メッキ済リン青銅 PRE-TINNED PHOS-BRO.	50802-8100	バラ状 LOOSE
錫メッキ済リン青銅 PRE-TINNED PHOS-BRO.	50802-8000	連鎖状 CHAIN
錫メッキ済黄銅 PRE-TINNED BRASS	50802-9101	バラ状 LOOSE
錫メッキ済黄銅 PRE-TINNED BRASS	50802-9001	連鎖状 CHAIN
材料 MATERIAL	MATERIAL NO.	端子形状 FORM

DO NOT SCALE DRAWING

EG4NO. DRWN: CHK: APPR:	EG3NO. DRWN: CHK: APPR:	EG2NO. DRWN: CHK: APPR:	EG1NO. DRWN: CHK: APPR:	RELEASED EG0NO. JC80766 DRWN: S.MATSUZAKI '98/4/9 CHK: S.KUNISHI '98/4/10 APPR: M.FUKUSHIMA '98/4/10
----------------------------------	----------------------------------	----------------------------------	----------------------------------	--

MATERIAL 材料	表参照 (t=0.203) SEE TABLE
FINISH 仕上り	—
WIRE RANGE 適用線径範囲	AWG #22 ~ #28 0.33 ~ 0.08mm ²
INS. RANGE 被覆外径	∅1.15 ~ 1.9

GENERAL TOLERANCES: (UNLESS SPECIFIED) 一般公差	
10 UNDER 未満	+0.2
10 OVER 以上	+0.25
30 UNDER 未満	+0.25
30 OVER 以上	+0.3
ANGLE 角度	+3°

SCALE	DESIGN UNITS <input checked="" type="checkbox"/> mm <input type="checkbox"/> INCH
DRAWN BY & DATE S.MATSUZAKI '98/4/9	
CHECKED BY & DATE S.KUNISHI '98/4/10	
APPROVED BY & DATE M.FUKUSHIMA '98/4/10	
CAD FILENAME	50802002.S01

MODEL NO. 50802-****	DIMENSIONS: <input checked="" type="checkbox"/> mm <input type="checkbox"/> INCH <input checked="" type="checkbox"/> mm ONLY	SHT REV	REVISE ON CAD ONLY
TITLE: 2.5 WIRE TO BOARD CONN. CRIMP RECEPTACLE			
MOLEX INCORPORATED			
MATERIAL NO.	DRAWING NO.	SHEET NO.	
50802-****	SD-50802-002	1/1	
SIZE			B