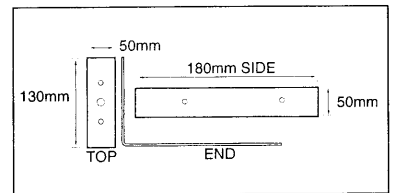


ACCESSORIES

Code No: 50001

Right Angled Wall Bracket

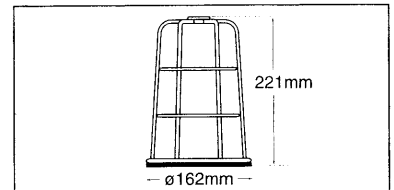
Suitable for use with 88, 125, 200/201 series beacons



Code No: 50002

Stainless Steel Cage Guard & Base

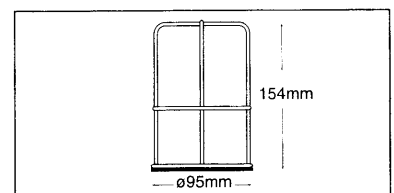
Suitable for use with 88, 200/201 series beacons



Code No: 50003

Stainless Steel Cage Guard & Base

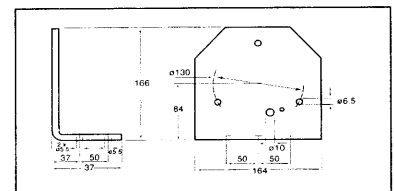
Suitable for use with 125 series beacons
(Product Pending)



Code No: 50004

Right Angled Wall Bracket

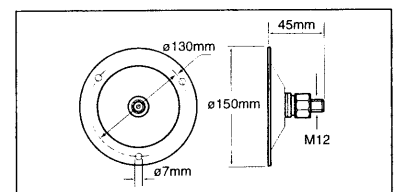
Suitable for use with 300/301, 400/401 & 500/501 series beacons



Code No: 50006

Single Point Fix Bracket

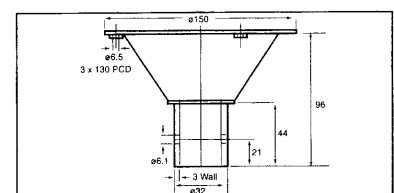
Suitable for use with 300/301, 400/401 & 500/501 series beacons



Code No: 50008

Pole Mount Bracket

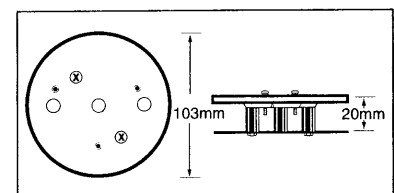
Suitable for use with 300/301, 400/401, 500/501 series beacons



Code No: 50080

Anti-Vibration Mount

Suitable for use on 88, 125 & 200/201 series beacons



Code No: 50081

Additional Weatherproof Seal

Suitable for use with 200/201 series beacons

