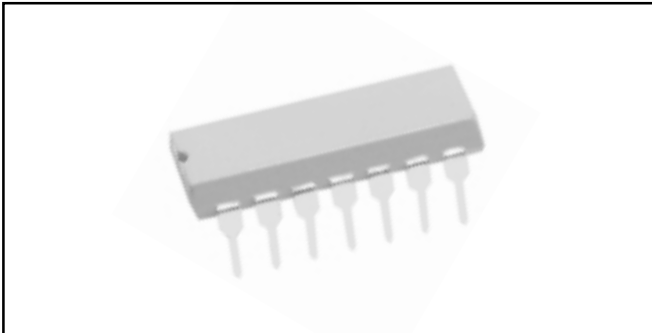




Dual-In-Line, 10 Bit R/2R Ladder Networks



APPLICATIONS

10 Bit, R/2R Ladder networks for D/A and A/D converter with bi-polar or CMOS switches

ELECTRICAL SPECIFICATIONS

Ladder Network Accuracy: ± 1 LSB from 0°C to $+70^{\circ}\text{C}$.

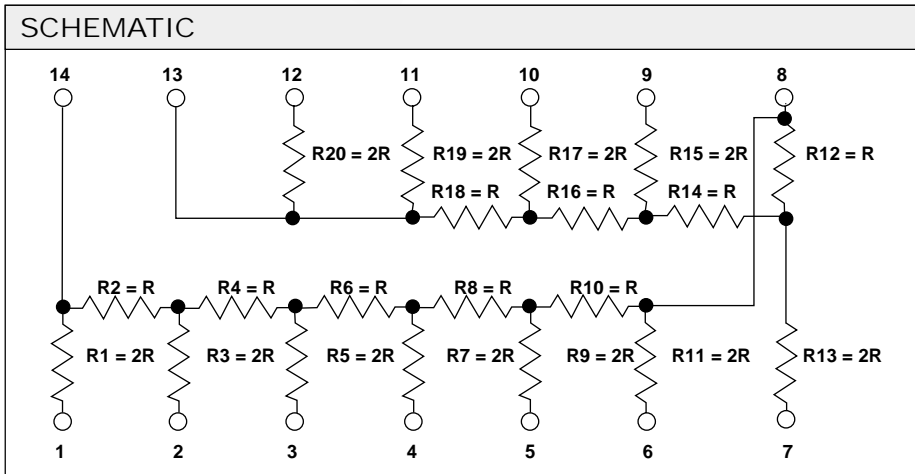
Ladder Network Resistance Tolerance: $\pm 2\%$.

Temperature Coefficient of Resistance: $\pm 100\text{PPM}/^{\circ}\text{C}$.

Operating Temperature Range: 0°C to $+70^{\circ}\text{C}$.

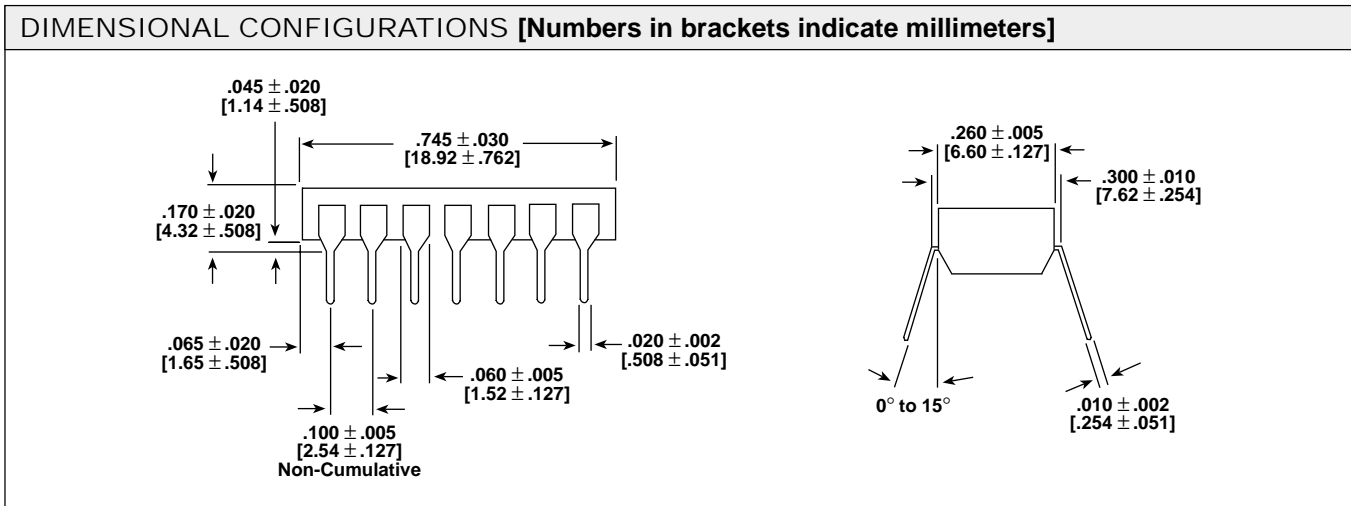
Power Dissipation Rating at $+70^{\circ}\text{C}$ Ambient: 50mW for individual resistor and 1.6 watts total package rating.

Standard Resistance Values (R): 25 kilohms, 50 kilohms, 100 kilohms.



RATIO MATCH TOLERANCE

- R1/R2 = $2 \pm 1\%$.
- R1/R3 = $1 \pm 1\%$.
- R1/R4 = $2 \pm 1\%$.
- R1/R5 = $1 \pm 1\%$.
- R1/R6 = $2 \pm 1\%$.
- R1/R7 = $1 \pm 1\%$.
- R1/R8 = $2 \pm 1\%$.
- R9/R10 = $2 \pm 0.5\%$.
- R11/R12 = $2 \pm 0.4\%$.
- R13/R14 = $2 \pm 0.2\%$.
- R15/R16 = $2 \pm 0.2\%$.
- R19/R17 = $1 \pm 0.1\%$.
- R19/R18 = $2 \pm 0.1\%$.



HOW TO ORDER

T14L10 MODEL	104 RESISTANCE VALUE (Ohms)	<p>EXAMPLE: 104 = R = 100 kilohms. REFERENCE: 2R = 200 kilohms.</p>
<p>First two digits are significant, third digit signifies number of zeros to follow.</p>		