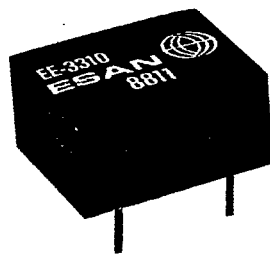


DC/DC Converter

EE Series



Features:

- Up to 1.25 watts output
- ULTRA-miniature size (0.25" height)
- Input/output Isolation
- 5 input voltage ranges 5,12,24,28 and 48V_{dc}
- No Heat Sink Required

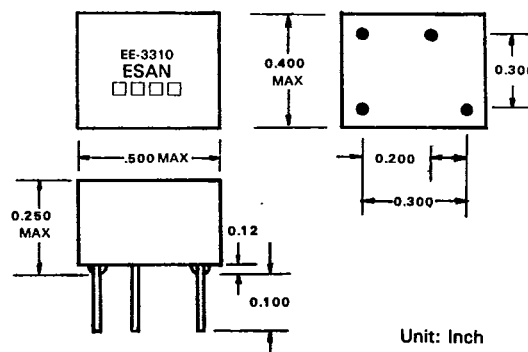
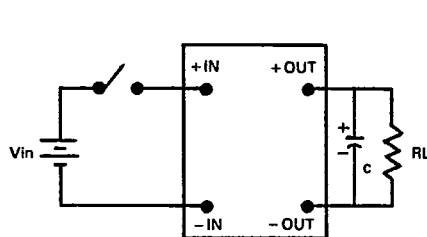
General Specifications:

- Efficiency (at full load).....65% ~ 80%
- Isolation Voltage.....500 V_{dc}
- Operating Temp. Range.....- 25°C ~ + 70°C
- Storage Temp. Range.....- 55°C ~ + 125°C
- Operating Frequency.....20 ~ 40KHz

Electrical Specifications:

- Input Voltage Range.....+ 5%
- Output Voltage Accuracy.....± 5%

PART NO.	INPUT VOLTAGE (V _{dc})	OUTPUT VOLTAGE (V _{dc})	MAX. LOAD CURRENT (mA)	MAX. OUTPUT POWER (watts)	EFF@ FULL LOAD TYPICAL (%)	INPUT CURRENT FULL LOAD TYPICAL (mA)	OUTPUT VOLTAGE RIPPLE @ FULL LOAD (V _{p-p max})	NO LOAD CURRENT TYPICAL (mA)	FULL LOAD OUTPUT VOLTAGE (V _{oc})
EE-1100	5	5	200	1.00	66	303	0.20	65	+0.25
EE-1200	5	9	139	1.25	73	342	0.15	80	±0.3
EE-1300	5	12	104	1.25	73	342	0.15	80	±0.4
EE-1400	5	15	83	1.25	75	333	0.12	90	±0.4
EE-1500	5	24	52	1.25	75	333	0.10	90	±0.5
EE-1600	5	28	45	1.25	74	338	0.10	90	±0.5
EE-1700	5	48	26	1.25	77	325	0.10	90	±0.7
EE-3100	12	5	200	1.25	66	126	0.20	24	±0.25
EE-3200	12	9	139	1.25	74	141	0.15	26	±0.3
EE-3300	12	12	104	1.25	76	137	0.15	26	±0.4
EE-3400	12	15	83	1.25	78	134	0.15	26	±0.4
EE-3500	12	24	52	1.25	78	134	0.15	26	±0.5
EE-3600	12	28	45	1.25	77	135	0.15	26	±0.5
EE-3700	12	48	26	1.25	80	130	0.20	26	±0.7
EE-5100	24	5	200	1.00	66	63	0.20	13	±0.25
EE-5200	24	9	139	1.25	72	72	0.20	15	±0.3
EE-5300	24	12	104	1.25	75	69	0.20	15	±0.4
EE-5400	24	15	83	1.25	75	69	0.20	15	±0.4
EE-5500	24	24	52	1.25	78	67	0.20	15	±0.5
EE-5600	24	28	45	1.25	77	68	0.20	15	±0.5
EE-5700	24	48	26	1.25	78	67	0.25	16	±0.7



Unit: Inch