

PLEASE CHECK WWW.MOLEX.COM FOR LATEST PART INFORMATION

Part Number: [0022268152](#)
Status: **Active**
Overview: [kk](#)
Description: 2.54mm (.100") KK® IDT Double Cantilever Contact, 15 Circuits, Tin (Sn), Feed-Through, 24 Stranded, Solid, Fused, Topcoat, and 26 Fused and Topcoat, Green ID Strip

Documents:

[3D Model](#) [Product Specification PS-7720-001 \(PDF\)](#)
[Drawing \(PDF\)](#) [RoHS Certificate of Compliance \(PDF\)](#)

Agency Certification

UL E29179

General

Product Family IDT and Solder Connectors
 Series [7720](#)
 Comments Double Cantilever contact
 Crimp Quality Equipment Yes
 Overview [kk](#)
 Product Name KK®

Physical

Circuits (Loaded) 15
 Color - Resin Natural
 Durability (mating cycles max) 5
 Flammability 94V-2
 Gender Female
 Glow-Wire Compliant No
 Lock to Mating Part Yes
 Material - Metal Phosphor Bronze
 Material - Plating Mating Tin
 Material - Plating Termination Tin
 Material - Resin Nylon
 Number of Rows 1
 Packaging Type Bag
 Panel Mount No
 Pitch - Mating Interface (in) 0.100 In
 Pitch - Mating Interface (mm) 2.54 mm
 Polarized to Mating Part Yes
 Temperature Range - Operating 0°C to +75°C
 Termination Interface: Style IDT or Pierce
 Wire Size AWG 24 Solid, 24 Stranded, 24 Stranded Topcoat, 26 Stranded Topcoat

Electrical

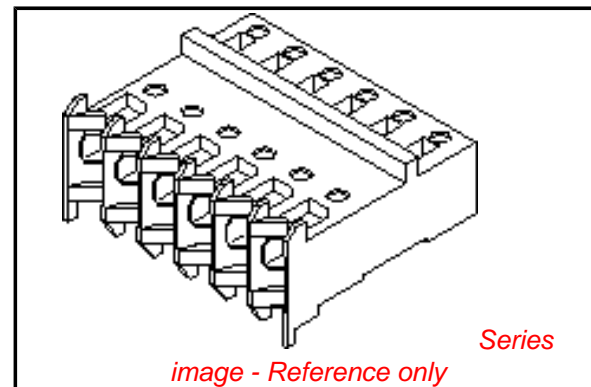
Current - Maximum per Contact 4A
 Voltage - Maximum 250V

Material Info

Old Part Number A-7720-B15HP909B

Reference - Drawing Numbers

Packaging Specification PK-7720-001
 Product Specification PS-7720-001
 Sales Drawing SD-7720-001



EU RoHS

ELV and RoHS Compliant
REACH SVHC Contains SVHC: No
Halogen-Free Status Not Reviewed

China RoHS



Need more information on product environmental compliance?

Email productcompliance@molex.com
 For a multiple part number RoHS Certificate of Compliance, [click here](#)

Please visit the [Contact Us](#) section for any non-product compliance questions.

Search Parts in this Series

[7720Series](#)

Application Tooling | [FAQ](#)

Tooling specifications and manuals are found by selecting the products below. Crimp Height Specifications are then contained in the Application Tooling Specification document.

Global

| Description | Product # |
|----------------------|----------------------------|
| Insertion Tool for | 0638133504 |
| 2.54mm (.100") Pitch | |
| KK® IDT Crimp | |
| Terminals | |
| IDT - Manual Press | 0011200179 |
| IDT - Semi-automatic | 0011200412 |
| - Bench-Top | |
| Terminator | |
| IDT - Semi-automatic | 0011200771 |
| - Bench-Top | |
| Terminator | |

IDT - Semi-automatic 0623000100
- Bench-Top
Terminator
Changehead for 0690080225
7720 and 7720s
Connector Range,
Colour Bar In, Feed-
To Only
Arbor Press Fixture 0690200320
for 7720 and
7720s Insulation
Displacement
Housings, 2-28
Circuit, 24-28 AWG
Wire/ Ribbon Cable

This document was generated on 05/19/2010

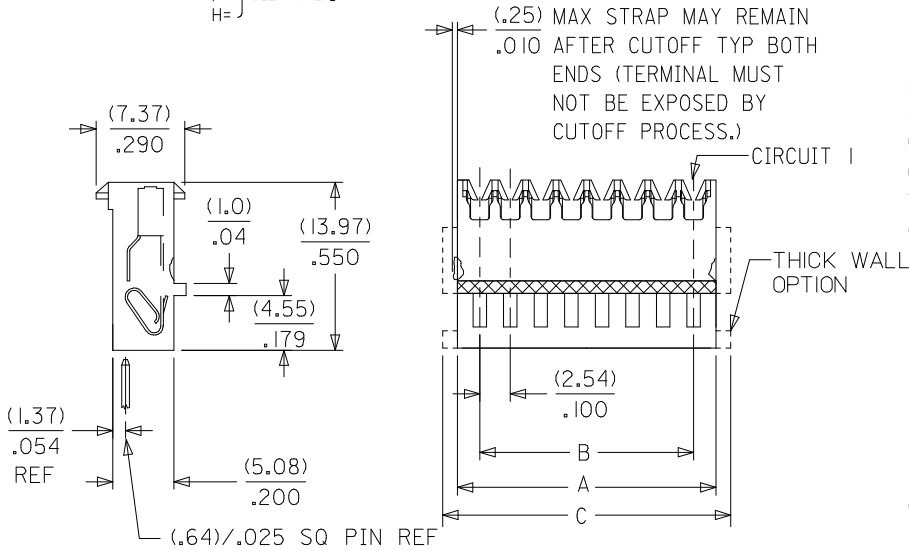
PLEASE CHECK WWW.MOLEX.COM FOR LATEST PART INFORMATION

ENGINEERING NUMBERING SYSTEM
SEE SHEET 17 FOR PARTS WITH VOIDS

| | | | |
|--|--|---|--|
| HOUSING TYPE | | VOID TYPE | |
| A=7720-AN B=7720-BN C=7720-CN D=7720-DN E=7720-EN F=7720-FN WA=7720-WAN WB=7720-WBN WC=7720-WCN WD=7720-WDN WE=7720-WEN WF=7720-WFN | | A=TERMINAL AND MOLDED IN B=MOLDED IN ONLY BLANK = NONE | |
| NO. OF CKTS | | VOID LOCATION | |
| SLOT I.D. | | NUMBER = CIRCUIT VOIDED MULTIPLE VOIDS START WITH 51 BLANK = NONE | |
| SEE NOTE 5 | | TERMINAL | |
| SEE NOTE 8 | | A=7691 B=41138 C=41512 | |
| | | PLATING | |

NOTES

- MATERIAL: UNFILLED NYLON, UL94V-2, MOLDED MATERIAL (CLEAR)
- FINISH:
 - (102) OVERALL TIN: (0.00508)/(0.00200 MIN OVER (0.00254)/(0.00100 MIN COPPER.
 - (208) SELECT GOLD: (0.00038)/(0.00015 MIN, * SELECT TIN: (0.00254)/(0.00100 MIN, OVERALL NICKEL UNDERPLATE: (0.00127)/(0.00050 MIN.
 - (228) SELECT GOLD: (0.00076)/(0.00030 MIN, * SELECT TIN: (0.00254)/(0.00100 MIN, OVERALL NICKEL UNDERPLATE: (0.00127)/(0.00050 MIN.
 - (501) OVERALL GOLD: (0.00051)/(0.00020 MIN OVER (0.00076)/(0.00030 MIN NICKEL
 - (502) OVERALL GOLD: (0.00051)/(0.00020 MIN OVER (0.00127)/(0.00050 MIN NICKEL.
 - (503) OVERALL GOLD: (0.00076)/(0.00030 MIN OVER (0.00127)/(0.00050 MIN NICKEL.
 - (P909) OVERALL TIN: (0.00254)/(0.00100 MIN. *THE PRIMARY SHIPPING CARTON WILL BE LABELED COMPLIANT TO RoHS DIRECTIVE 2002/95/EC AND ELV ANNEX II OF DIRECTIVE 2000/53/EC*. CARTONS WITHOUT THIS LABEL MAY CONTAIN PRODUCT WITH TIN/LEAD PLATINGS.
- PRODUCT SPECIFICATION: PS-7720-001
- PACKAGING: BULK PK-7720-001 SEE CHART
- THESE HOUSINGS ARE FOR USE WITH SINGLE 22 AWG WIRE TERMINATION ONLY
- COLOR STRIPE TO RUN LENGTH OF RIB AS SHOWN (SEE CHART FOR COLOR)
- SEE APPLICATION SPEC SMES-7720-0002 FOR ADDITIONAL INFORMATION.
- WIRE SPECIFICATIONS: SEE SMES-7720-0002 (INSUL. DIA (1.52)/(0.060 MAX)
 - SLOT SIZE A FOR USE WITH: 26 AWG SOLID, STRANDED TINNED
 - SLOT SIZE H FOR USE WITH: 28 AWG SOLID, STRANDED TINNED, AND STRANDED TOPCOAT
 - SLOT SIZE F FOR USE WITH: 24 AWG SOLID, STRANDED TINNED, AND STRANDED TOPCOAT
 - SLOT SIZE E FOR USE WITH: 26 AWG STRANDED TOPCOAT
 - SLOT SIZE G FOR USE WITH: 22 AWG STRANDED TINNED
- THIS PART CONFORMS TO CLASS B REQUIREMENTS OF COSMETIC SPECIFICATION PS-45499-002.



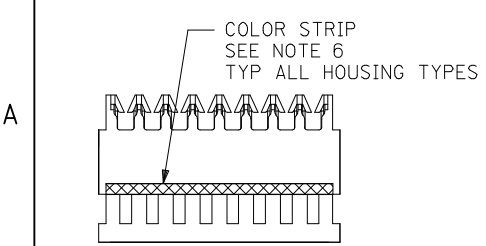
| NO OF CKTS | DIM A | DIM B | DIM C |
|------------|---------------|---------------|---------------|
| 2 | (5.44) .214 | (2.54) .100 | (7.59) .299 |
| 3 | (7.98) .314 | (5.08) .200 | (10.13) .399 |
| 4 | (10.52) .414 | (7.62) .300 | (12.67) .499 |
| 5 | (13.06) .514 | (10.16) .400 | (15.21) .599 |
| 6 | (15.60) .614 | (12.70) .500 | (17.75) .699 |
| 7 | (18.14) .714 | (15.24) .600 | (20.29) .799 |
| 8 | (20.68) .814 | (17.78) .700 | (22.83) .899 |
| 9 | (23.22) .914 | (20.30) .800 | (25.37) .999 |
| 10 | (25.76) 1.014 | (22.86) .900 | (27.91) 1.099 |
| 11 | (28.30) 1.114 | (25.40) 1.000 | (30.45) 1.199 |
| 12 | (30.84) 1.214 | (27.94) 1.100 | (32.99) 1.299 |
| 13 | (33.38) 1.314 | (30.48) 1.200 | (35.53) 1.399 |
| 14 | (35.92) 1.414 | (33.02) 1.300 | (38.07) 1.499 |
| 15 | (38.46) 1.514 | (35.56) 1.400 | (40.61) 1.599 |
| 16 | (41.00) 1.614 | (38.10) 1.500 | (43.15) 1.699 |
| 17 | (43.54) 1.714 | (40.64) 1.600 | (45.69) 1.799 |
| 18 | (46.08) 1.814 | (43.18) 1.700 | (48.23) 1.899 |
| 19 | (48.62) 1.914 | (45.72) 1.800 | (50.77) 1.999 |
| 20 | (51.16) 2.014 | (48.26) 1.900 | (53.31) 2.099 |
| 21 | (53.70) 2.114 | (50.80) 2.000 | (55.85) 2.199 |
| 22 | (56.24) 2.214 | (53.34) 2.100 | (58.39) 2.299 |
| 23 | (58.78) 2.314 | (55.88) 2.200 | (60.93) 2.399 |
| 24 | (61.32) 2.414 | (58.42) 2.300 | (63.47) 2.499 |
| 25 | (63.86) 2.514 | (60.96) 2.400 | (66.01) 2.599 |
| 26 | (66.40) 2.614 | (63.50) 2.500 | (68.55) 2.699 |
| 27 | (68.94) 2.714 | (66.04) 2.600 | (71.09) 2.799 |
| 28 | (71.48) 2.814 | (68.58) 2.700 | (73.63) 2.899 |

| | | | |
|---|-------------------------------|--------------------|----|
| CORRECT HSG. NO.'S EC NO: UCP2009-2291 DRWN:MKIPPER 2009/04/16 CHKD:SSOUSEK 2009/04/17 APPR:FSM:TH 2009/04/17 | QUALITY SYMBOLS ▽=0 ◁=0 | DESCRIPTION REV | BA |
| | | | |

| | |
|--|---------------|
| GENERAL TOLERANCES (UNLESS SPECIFIED) | |
| | ANGULAR ±1/2° |
| DRAFT WHERE APPLICABLE MUST REMAIN WITHIN DIMENSIONS | |

| | |
|--------------------------|--------------------|
| DIMENSION STYLE MM/IN | |
| DRAWN BY SAMIEC | DATE 2004/04/13 |
| CHECKED BY SAMIEC | DATE 2004/04/13 |
| APPROVED BY MARGULIS | DATE 2004/04/13 |
| MATERIAL NO. | SEE CHART |

| | | |
|--|----------------------|------------------------|
| SCALE --- | DESIGN UNITS INCH | THIRD ANGLE PROJECTION |
| TITLE KK 100 IDT CONNECTOR ASSEMBLY | | |
| MOLEX INCORPORATED | | |
| DOCUMENT NO. SD-7720-001 | SHEET NO. 1 OF * | |



FACTORY I.D.
 EC NO: UCP2009-2029
 DRWN:MKIPPER 2009/02/25
 CHKD:SSOUSEK 2009/02/25
 APPR:FSMITH 2009/02/26
AZ7

| QUALITY SYMBOLS | DESCRIPTION |
|-----------------|-------------|
| | =0 |
| | =0 |

| GENERAL TOLERANCES (UNLESS SPECIFIED) | | |
|--|-------|-------|
| | mm | INCH |
| 4 PLACES | ± --- | ± --- |
| 3 PLACES | ± --- | ± --- |
| 2 PLACES | ± --- | ± --- |
| 1 PLACE | ± --- | ± --- |
| ANGULAR ±1/2° | | |
| DRAFT WHERE APPLICABLE MUST REMAIN WITHIN DIMENSIONS | | |

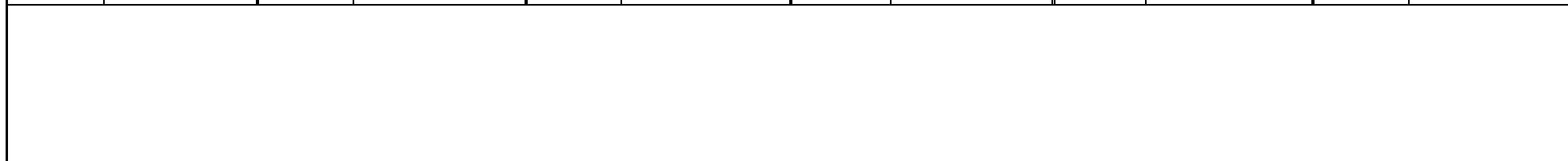
| DIMENSION STYLE | |
|------------------|------------|
| MM/IN | |
| DRAWN BY | DATE |
| SAMIEC | 2004/04/13 |
| CHECKED BY | DATE |
| SAMIEC | 2004/04/13 |
| APPROVED BY | DATE |
| MARGULIS | 2004/04/13 |
| MATERIAL NO. | |
| SEE CHART | |

| | | | |
|---|--------------|------------------------|-----------|
| SCALE | DESIGN UNITS | THIRD ANGLE PROJECTION | |
| --- | INCH | | |
| TITLE | | | |
| KK 100 IDT CONNECTOR ASSEMBLY | | | |
| MOLEX INCORPORATED | | | |
| DOCUMENT NO. | | | SHEET NO. |
| SD-7720-001 | | | 2 OF * |
| THIS DRAWING CONTAINS INFORMATION THAT IS PROPRIETARY TO MOLEX INCORPORATED AND SHOULD NOT BE USED WITHOUT WRITTEN PERMISSION | | | |

| A-7720-ANA102 | | A-7720-BNA102 | | A-7720-CNA102 | | A-7720-DNA102 | | A-7720-ENA102 | | A-7720-FNA102 | |
|---------------|-----------------|---------------|-----------------|---------------|-----------------|---------------|-----------------|---------------|-----------------|---------------|-----------------|
| HOUSING | 7720-AN | HOUSING | 7720-BN | HOUSING | 7720-CN | HOUSING | 7720-DN | HOUSING | 7720-EN | HOUSING | 7720-FN |
| TERM. NO | 7691-A102 | TERM. NO | 7691-A102 | TERM. NO | 7691-A102 | TERM. NO | 7691-A102 | TERM. NO | 7691-A102 | TERM. NO | 7691-A102 |
| PLATING: | 102 | PLATING: | 102 | PLATING: | 102 | PLATING: | 102 | PLATING: | 102 | PLATING: | 102 |
| COLOR | BROWN | COLOR | BROWN | COLOR | BROWN | COLOR | BROWN | COLOR | BROWN | COLOR | BROWN |
| MATL NO | ENG NO: | MATL NO | ENG NO: | MATL NO | ENG NO: | MATL NO | ENG NO: | MATL NO | ENG NO: | MATL NO | ENG NO: |
| 22-26-7021 | A-7720-A02A102A | 22-26-8021 | A-7720-B02A102A | 22-26-9021 | A-7720-C02A102A | 22-41-3021 | A-7720-D02A102A | 22-41-4021 | A-7720-E02A102A | 22-41-5021 | A-7720-F02A102A |
| 22-26-7031 | A-7720-A03A102A | 22-26-8031 | A-7720-B03A102A | 22-26-9031 | A-7720-C03A102A | 22-41-3031 | A-7720-D03A102A | 22-41-4031 | A-7720-E03A102A | 22-41-5031 | A-7720-F03A102A |
| 22-26-7041 | A-7720-A04A102A | 22-26-8041 | A-7720-B04A102A | 22-26-9041 | A-7720-C04A102A | 22-41-3041 | A-7720-D04A102A | 22-41-4041 | A-7720-E04A102A | 22-41-5041 | A-7720-F04A102A |
| 22-26-7051 | A-7720-A05A102A | 22-26-8051 | A-7720-B05A102A | 22-26-9051 | A-7720-C05A102A | 22-41-3051 | A-7720-D05A102A | 22-41-4051 | A-7720-E05A102A | 22-41-5051 | A-7720-F05A102A |
| 22-26-7061 | A-7720-A06A102A | 22-26-8061 | A-7720-B06A102A | 22-26-9061 | A-7720-C06A102A | 22-41-3061 | A-7720-D06A102A | 22-41-4061 | A-7720-E06A102A | 22-41-5061 | A-7720-F06A102A |
| 22-26-7071 | A-7720-A07A102A | 22-26-8071 | A-7720-B07A102A | 22-26-9071 | A-7720-C07A102A | 22-41-3071 | A-7720-D07A102A | 22-41-4071 | A-7720-E07A102A | 22-41-5071 | A-7720-F07A102A |
| 22-26-7081 | A-7720-A08A102A | 22-26-8081 | A-7720-B08A102A | 22-26-9081 | A-7720-C08A102A | 22-41-3081 | A-7720-D08A102A | 22-41-4081 | A-7720-E08A102A | 22-41-5081 | A-7720-F08A102A |
| 22-26-7091 | A-7720-A09A102A | 22-26-8091 | A-7720-B09A102A | 22-26-9091 | A-7720-C09A102A | 22-41-3091 | A-7720-D09A102A | 22-41-4091 | A-7720-E09A102A | 22-41-5091 | A-7720-F09A102A |
| 22-26-7101 | A-7720-A10A102A | 22-26-8101 | A-7720-B10A102A | 22-26-9101 | A-7720-C10A102A | 22-41-3101 | A-7720-D10A102A | 22-41-4101 | A-7720-E10A102A | 22-41-5101 | A-7720-F10A102A |
| 22-26-7111 | A-7720-A11A102A | 22-26-8111 | A-7720-B11A102A | 22-26-9111 | A-7720-C11A102A | 22-41-3111 | A-7720-D11A102A | 22-41-4111 | A-7720-E11A102A | 22-41-5111 | A-7720-F11A102A |
| 22-26-7121 | A-7720-A12A102A | 22-26-8121 | A-7720-B12A102A | 22-26-9121 | A-7720-C12A102A | 22-41-3121 | A-7720-D12A102A | 22-41-4121 | A-7720-E12A102A | 22-41-5121 | A-7720-F12A102A |
| 22-26-7131 | A-7720-A13A102A | 22-26-8131 | A-7720-B13A102A | 22-26-9131 | A-7720-C13A102A | 22-41-3131 | A-7720-D13A102A | 22-41-4131 | A-7720-E13A102A | 22-41-5131 | A-7720-F13A102A |
| 22-26-7141 | A-7720-A14A102A | 22-26-8141 | A-7720-B14A102A | 22-26-9141 | A-7720-C14A102A | 22-41-3141 | A-7720-D14A102A | 22-41-4141 | A-7720-E14A102A | 22-41-5141 | A-7720-F14A102A |
| 22-26-7151 | A-7720-A15A102A | 22-26-8151 | A-7720-B15A102A | 22-26-9151 | A-7720-C15A102A | 22-41-3151 | A-7720-D15A102A | 22-41-4151 | A-7720-E15A102A | 22-41-5151 | A-7720-F15A102A |
| 22-26-7161 | A-7720-A16A102A | 22-26-8161 | A-7720-B16A102A | 22-26-9161 | A-7720-C16A102A | 22-41-3161 | A-7720-D16A102A | 22-41-4161 | A-7720-E16A102A | 22-41-5161 | A-7720-F16A102A |
| 22-26-7171 | A-7720-A17A102A | 22-26-8171 | A-7720-B17A102A | 22-26-9171 | A-7720-C17A102A | 22-41-3171 | A-7720-D17A102A | 22-41-4171 | A-7720-E17A102A | 22-41-5171 | A-7720-F17A102A |
| 22-26-7181 | A-7720-A18A102A | 22-26-8181 | A-7720-B18A102A | 22-26-9181 | A-7720-C18A102A | 22-41-3181 | A-7720-D18A102A | 22-41-4181 | A-7720-E18A102A | 22-41-5181 | A-7720-F18A102A |
| 22-26-7191 | A-7720-A19A102A | 22-26-8191 | A-7720-B19A102A | 22-26-9191 | A-7720-C19A102A | 22-41-3191 | A-7720-D19A102A | 22-41-4191 | A-7720-E19A102A | 22-41-5191 | A-7720-F19A102A |
| 22-26-7201 | A-7720-A20A102A | 22-26-8201 | A-7720-B20A102A | 22-26-9201 | A-7720-C20A102A | 22-41-3201 | A-7720-D20A102A | 22-41-4201 | A-7720-E20A102A | 22-41-5201 | A-7720-F20A102A |
| 22-26-7211 | A-7720-A21A102A | 22-26-8211 | A-7720-B21A102A | 22-26-9211 | A-7720-C21A102A | 22-41-3211 | A-7720-D21A102A | 22-41-4211 | A-7720-E21A102A | 22-41-5211 | A-7720-F21A102A |
| 22-26-7221 | A-7720-A22A102A | 22-26-8221 | A-7720-B22A102A | 22-26-9221 | A-7720-C22A102A | 22-41-3221 | A-7720-D22A102A | 22-41-4221 | A-7720-E22A102A | 22-41-5221 | A-7720-F22A102A |
| 22-26-7231 | A-7720-A23A102A | 22-26-8231 | A-7720-B23A102A | 22-26-9231 | A-7720-C23A102A | 22-41-3231 | A-7720-D23A102A | 22-41-4231 | A-7720-E23A102A | 22-41-5231 | A-7720-F23A102A |
| 22-26-7241 | A-7720-A24A102A | 22-26-8241 | A-7720-B24A102A | 22-26-9241 | A-7720-C24A102A | 22-41-3241 | A-7720-D24A102A | 22-41-4241 | A-7720-E24A102A | 22-41-5241 | A-7720-F24A102A |
| 22-26-7251 | A-7720-A25A102A | 22-26-8251 | A-7720-B25A102A | 22-26-9251 | A-7720-C25A102A | 22-41-3251 | A-7720-D25A102A | 22-41-4251 | A-7720-E25A102A | 22-41-5251 | A-7720-F25A102A |
| 22-26-7261 | A-7720-A26A102A | 22-26-8261 | A-7720-B26A102A | 22-26-9261 | A-7720-C26A102A | 22-41-3261 | A-7720-D26A102A | 22-41-4261 | A-7720-E26A102A | 22-41-5261 | A-7720-F26A102A |
| 22-26-7271 | A-7720-A27A102A | 22-26-8271 | A-7720-B27A102A | 22-26-9271 | A-7720-C27A102A | 22-41-3271 | A-7720-D27A102A | 22-41-4271 | A-7720-E27A102A | 22-41-5271 | A-7720-F27A102A |
| 22-26-7281 | A-7720-A28A102A | 22-26-8281 | A-7720-B28A102A | 22-26-9281 | A-7720-C28A102A | 22-41-3281 | A-7720-D28A102A | 22-41-4281 | A-7720-E28A102A | 22-41-5281 | A-7720-F28A102A |

| | | | |
|---|--|---|--------------------------------------|
| REVISION: BA | ECR/ECN INFORMATION: | TITLE: KK 100 IDT CONNECTOR ASSEMBLY | SHEET No. 3 |
| | EC No.: UCP2009-2291 DATE: 4/17/2009 | | |
| DOCUMENT NUMBER: SD-7720-001 | CREATED / REVISED BY: MKIPPER | CHECKED BY: SSOUSEK | APPROVED BY: FSMITH |

| A-7720-ANHP909B | | A-7720-BNHP909B | | A-7720-CNHP909B | | A-7720-DNHP909B | | A-7720-ENHP909B | | A-7720-FNHP909B | |
|-----------------|------------------|-----------------|------------------|-----------------|------------------|-----------------|------------------|-----------------|------------------|-----------------|------------------|
| HOUSING | 7720-AN | HOUSING | 7720-BN | HOUSING | 7720-CN | HOUSING | 7720-DN | HOUSING | 7720-EN | HOUSING | 7720-FN |
| TERM. NO | 41138-HP909 | TERM. NO | 41138-HP909 | TERM. NO | 41138-HP909 | TERM. NO | 41138-HP909 | TERM. NO | 41138-HP909 | TERM. NO | 41138-HP909 |
| PLATING: | P909 | PLATING: | P909 | PLATING: | P909 | PLATING: | P909 | PLATING: | P909 | PLATING: | P909 |
| COLOR | GREEN | COLOR | GREEN | COLOR | GREEN | COLOR | GREEN | COLOR | GREEN | COLOR | GREEN |
| MATL NO | ENG NO: | MATL NO | ENG NO: | MATL NO | ENG NO: | MATL NO | ENG NO: | MATL NO | ENG NO: | MATL NO | ENG NO: |
| 22-26-7022 | A-7720-A02HP909B | 22-26-8022 | A-7720-B02HP909B | 22-26-9022 | A-7720-C02HP909B | 22-41-3022 | A-7720-D02HP909B | 22-41-4022 | A-7720-E02HP909B | 22-41-5022 | A-7720-F02HP909B |
| 22-26-7032 | A-7720-A03HP909B | 22-26-8032 | A-7720-B03HP909B | 22-26-9032 | A-7720-C03HP909B | 22-41-3032 | A-7720-D03HP909B | 22-41-4032 | A-7720-E03HP909B | 22-41-5032 | A-7720-F03HP909B |
| 22-26-7042 | A-7720-A04HP909B | 22-26-8042 | A-7720-B04HP909B | 22-26-9042 | A-7720-C04HP909B | 22-41-3042 | A-7720-D04HP909B | 22-41-4042 | A-7720-E04HP909B | 22-41-5042 | A-7720-F04HP909B |
| 22-26-7052 | A-7720-A05HP909B | 22-26-8052 | A-7720-B05HP909B | 22-26-9052 | A-7720-C05HP909B | 22-41-3052 | A-7720-D05HP909B | 22-41-4052 | A-7720-E05HP909B | 22-41-5052 | A-7720-F05HP909B |
| 22-26-7062 | A-7720-A06HP909B | 22-26-8062 | A-7720-B06HP909B | 22-26-9062 | A-7720-C06HP909B | 22-41-3062 | A-7720-D06HP909B | 22-41-4062 | A-7720-E06HP909B | 22-41-5062 | A-7720-F06HP909B |
| 22-26-7072 | A-7720-A07HP909B | 22-26-8072 | A-7720-B07HP909B | 22-26-9072 | A-7720-C07HP909B | 22-41-3072 | A-7720-D07HP909B | 22-41-4072 | A-7720-E07HP909B | 22-41-5072 | A-7720-F07HP909B |
| 22-26-7082 | A-7720-A08HP909B | 22-26-8082 | A-7720-B08HP909B | 22-26-9082 | A-7720-C08HP909B | 22-41-3082 | A-7720-D08HP909B | 22-41-4082 | A-7720-E08HP909B | 22-41-5082 | A-7720-F08HP909B |
| 22-26-7092 | A-7720-A09HP909B | 22-26-8092 | A-7720-B09HP909B | 22-26-9092 | A-7720-C09HP909B | 22-41-3092 | A-7720-D09HP909B | 22-41-4092 | A-7720-E09HP909B | 22-41-5092 | A-7720-F09HP909B |
| 22-26-7102 | A-7720-A10HP909B | 22-26-8102 | A-7720-B10HP909B | 22-26-9102 | A-7720-C10HP909B | 22-41-3102 | A-7720-D10HP909B | 22-41-4102 | A-7720-E10HP909B | 22-41-5102 | A-7720-F10HP909B |
| 22-26-7112 | A-7720-A11HP909B | 22-26-8112 | A-7720-B11HP909B | 22-26-9112 | A-7720-C11HP909B | 22-41-3112 | A-7720-D11HP909B | 22-41-4112 | A-7720-E11HP909B | 22-41-5112 | A-7720-F11HP909B |
| 22-26-7122 | A-7720-A12HP909B | 22-26-8122 | A-7720-B12HP909B | 22-26-9122 | A-7720-C12HP909B | 22-41-3122 | A-7720-D12HP909B | 22-41-4122 | A-7720-E12HP909B | 22-41-5122 | A-7720-F12HP909B |
| 22-26-7132 | A-7720-A13HP909B | 22-26-8132 | A-7720-B13HP909B | 22-26-9132 | A-7720-C13HP909B | 22-41-3132 | A-7720-D13HP909B | 22-41-4132 | A-7720-E13HP909B | 22-41-5132 | A-7720-F13HP909B |
| 22-26-7142 | A-7720-A14HP909B | 22-26-8142 | A-7720-B14HP909B | 22-26-9142 | A-7720-C14HP909B | 22-41-3142 | A-7720-D14HP909B | 22-41-4142 | A-7720-E14HP909B | 22-41-5142 | A-7720-F14HP909B |
| 22-26-7152 | A-7720-A15HP909B | 22-26-8152 | A-7720-B15HP909B | 22-26-9152 | A-7720-C15HP909B | 22-41-3152 | A-7720-D15HP909B | 22-41-4152 | A-7720-E15HP909B | 22-41-5152 | A-7720-F15HP909B |
| 22-26-7162 | A-7720-A16HP909B | 22-26-8162 | A-7720-B16HP909B | 22-26-9162 | A-7720-C16HP909B | 22-41-3162 | A-7720-D16HP909B | 22-41-4162 | A-7720-E16HP909B | 22-41-5162 | A-7720-F16HP909B |
| 22-26-7172 | A-7720-A17HP909B | 22-26-8172 | A-7720-B17HP909B | 22-26-9172 | A-7720-C17HP909B | 22-41-3172 | A-7720-D17HP909B | 22-41-4172 | A-7720-E17HP909B | 22-41-5172 | A-7720-F17HP909B |
| 22-26-7182 | A-7720-A18HP909B | 22-26-8182 | A-7720-B18HP909B | 22-26-9182 | A-7720-C18HP909B | 22-41-3182 | A-7720-D18HP909B | 22-41-4182 | A-7720-E18HP909B | 22-41-5182 | A-7720-F18HP909B |
| 22-26-7192 | A-7720-A19HP909B | 22-26-8192 | A-7720-B19HP909B | 22-26-9192 | A-7720-C19HP909B | 22-41-3192 | A-7720-D19HP909B | 22-41-4192 | A-7720-E19HP909B | 22-41-5192 | A-7720-F19HP909B |
| 22-26-7202 | A-7720-A20HP909B | 22-26-8202 | A-7720-B20HP909B | 22-26-9202 | A-7720-C20HP909B | 22-41-3202 | A-7720-D20HP909B | 22-41-4202 | A-7720-E20HP909B | 22-41-5202 | A-7720-F20HP909B |
| 22-26-7212 | A-7720-A21HP909B | 22-26-8212 | A-7720-B21HP909B | 22-26-9212 | A-7720-C21HP909B | 22-41-3212 | A-7720-D21HP909B | 22-41-4212 | A-7720-E21HP909B | 22-41-5212 | A-7720-F21HP909B |
| 22-26-7222 | A-7720-A22HP909B | 22-26-8222 | A-7720-B22HP909B | 22-26-9222 | A-7720-C22HP909B | 22-41-3222 | A-7720-D22HP909B | 22-41-4222 | A-7720-E22HP909B | 22-41-5222 | A-7720-F22HP909B |
| 22-26-7232 | A-7720-A23HP909B | 22-26-8232 | A-7720-B23HP909B | 22-26-9232 | A-7720-C23HP909B | 22-41-3232 | A-7720-D23HP909B | 22-41-4232 | A-7720-E23HP909B | 22-41-5232 | A-7720-F23HP909B |
| 22-26-7242 | A-7720-A24HP909B | 22-26-8242 | A-7720-B24HP909B | 22-26-9242 | A-7720-C24HP909B | 22-41-3242 | A-7720-D24HP909B | 22-41-4242 | A-7720-E24HP909B | 22-41-5242 | A-7720-F24HP909B |
| 22-26-7252 | A-7720-A25HP909B | 22-26-8252 | A-7720-B25HP909B | 22-26-9252 | A-7720-C25HP909B | 22-41-3252 | A-7720-D25HP909B | 22-41-4252 | A-7720-E25HP909B | 22-41-5252 | A-7720-F25HP909B |
| 22-26-7262 | A-7720-A26HP909B | 22-26-8262 | A-7720-B26HP909B | 22-26-9262 | A-7720-C26HP909B | 22-41-3262 | A-7720-D26HP909B | 22-41-4262 | A-7720-E26HP909B | 22-41-5262 | A-7720-F26HP909B |
| 22-26-7272 | A-7720-A27HP909B | 22-26-8272 | A-7720-B27HP909B | 22-26-9272 | A-7720-C27HP909B | 22-41-3272 | A-7720-D27HP909B | 22-41-4272 | A-7720-E27HP909B | 22-41-5272 | A-7720-F27HP909B |
| 22-26-7282 | A-7720-A28HP909B | 22-26-8282 | A-7720-B28HP909B | 22-26-9282 | A-7720-C28HP909B | 22-41-3282 | A-7720-D28HP909B | 22-41-4282 | A-7720-E28HP909B | 22-41-5282 | A-7720-F28HP909B |



| | | | |
|---|--|---|--------------------------------------|
| REVISION: BA | ECR/ECN INFORMATION: EC No.: UCP2009-2291 DATE: 4/17/2009 | TITLE: KK 100 IDT CONNECTOR ASSEMBLY | SHEET No. 4 |
| DOCUMENT NUMBER: SD-7720-001 | | CREATED / REVISED BY: MKIPPER | CHECKED BY: SSOUSEK |
| | | APPROVED BY: FSMITH | |

| A-7720-ANFP909B | | A-7720-BNFP909B | | A-7720-CNFP909B | | A-7720-DNFP909B | | A-7720-ENFP909B | | A-7720-FNFP909B | |
|-----------------|------------------|-----------------|------------------|-----------------|------------------|-----------------|------------------|-----------------|------------------|-----------------|------------------|
| HOUSING | 7720-AN | HOUSING | 7720-BN | HOUSING | 7720-CN | HOUSING | 7720-DN | HOUSING | 7720-EN | HOUSING | 7720-FN |
| TERM. NO | 41138-FP909 | TERM. NO | 41138-FP909 | TERM. NO | 41138-FP909 | TERM. NO | 41138-FP909 | TERM. NO | 41138-FP909 | TERM. NO | 41138-FP909 |
| PLATING: | P909 | PLATING: | P909 | PLATING: | P909 | PLATING: | P909 | PLATING: | P909 | PLATING: | P909 |
| COLOR | BLACK | COLOR | BLACK | COLOR | BLACK | COLOR | BLACK | COLOR | BLACK | COLOR | BLACK |
| MATL NO | ENG NO: | MATL NO | ENG NO: | MATL NO | ENG NO: | MATL NO | ENG NO: | MATL NO | ENG NO: | MATL NO | ENG NO: |
| 22-42-3020 | A-7720-A02FP909B | 22-42-3021 | A-7720-B02FP909B | 22-42-3022 | A-7720-C02FP909B | 22-42-3023 | A-7720-D02FP909B | 22-42-3024 | A-7720-E02FP909B | 22-42-3025 | A-7720-F02FP909B |
| 22-42-3030 | A-7720-A03FP909B | 22-42-3031 | A-7720-B03FP909B | 22-42-3032 | A-7720-C03FP909B | 22-42-3033 | A-7720-D03FP909B | 22-42-3034 | A-7720-E03FP909B | 22-42-3035 | A-7720-F03FP909B |
| 22-42-3040 | A-7720-A04FP909B | 22-42-3041 | A-7720-B04FP909B | 22-42-3042 | A-7720-C04FP909B | 22-42-3043 | A-7720-D04FP909B | 22-42-3044 | A-7720-E04FP909B | 22-42-3045 | A-7720-F04FP909B |
| 22-42-3050 | A-7720-A05FP909B | 22-42-3051 | A-7720-B05FP909B | 22-42-3052 | A-7720-C05FP909B | 22-42-3053 | A-7720-D05FP909B | 22-42-3054 | A-7720-E05FP909B | 22-42-3055 | A-7720-F05FP909B |
| 22-42-3060 | A-7720-A06FP909B | 22-42-3061 | A-7720-B06FP909B | 22-42-3062 | A-7720-C06FP909B | 22-42-3063 | A-7720-D06FP909B | 22-42-3064 | A-7720-E06FP909B | 22-42-3065 | A-7720-F06FP909B |
| 22-42-3070 | A-7720-A07FP909B | 22-42-3071 | A-7720-B07FP909B | 22-42-3072 | A-7720-C07FP909B | 22-42-3073 | A-7720-D07FP909B | 22-42-3074 | A-7720-E07FP909B | 22-42-3075 | A-7720-F07FP909B |
| 22-42-3080 | A-7720-A08FP909B | 22-42-3081 | A-7720-B08FP909B | 22-42-3082 | A-7720-C08FP909B | 22-42-3083 | A-7720-D08FP909B | 22-42-3084 | A-7720-E08FP909B | 22-42-3085 | A-7720-F08FP909B |
| 22-42-3090 | A-7720-A09FP909B | 22-42-3091 | A-7720-B09FP909B | 22-42-3092 | A-7720-C09FP909B | 22-42-3093 | A-7720-D09FP909B | 22-42-3094 | A-7720-E09FP909B | 22-42-3095 | A-7720-F09FP909B |
| 22-42-3100 | A-7720-A10FP909B | 22-42-3101 | A-7720-B10FP909B | 22-42-3102 | A-7720-C10FP909B | 22-42-3103 | A-7720-D10FP909B | 22-42-3104 | A-7720-E10FP909B | 22-42-3105 | A-7720-F10FP909B |
| 22-42-3110 | A-7720-A11FP909B | 22-42-3111 | A-7720-B11FP909B | 22-42-3112 | A-7720-C11FP909B | 22-42-3113 | A-7720-D11FP909B | 22-42-3114 | A-7720-E11FP909B | 22-42-3115 | A-7720-F11FP909B |
| 22-42-3120 | A-7720-A12FP909B | 22-42-3121 | A-7720-B12FP909B | 22-42-3122 | A-7720-C12FP909B | 22-42-3123 | A-7720-D12FP909B | 22-42-3124 | A-7720-E12FP909B | 22-42-3125 | A-7720-F12FP909B |
| 22-42-3130 | A-7720-A13FP909B | 22-42-3131 | A-7720-B13FP909B | 22-42-3132 | A-7720-C13FP909B | 22-42-3133 | A-7720-D13FP909B | 22-42-3134 | A-7720-E13FP909B | 22-42-3135 | A-7720-F13FP909B |
| 22-42-3140 | A-7720-A14FP909B | 22-42-3141 | A-7720-B14FP909B | 22-42-3142 | A-7720-C14FP909B | 22-42-3143 | A-7720-D14FP909B | 22-42-3144 | A-7720-E14FP909B | 22-42-3145 | A-7720-F14FP909B |
| 22-42-3150 | A-7720-A15FP909B | 22-42-3151 | A-7720-B15FP909B | 22-42-3152 | A-7720-C15FP909B | 22-42-3153 | A-7720-D15FP909B | 22-42-3154 | A-7720-E15FP909B | 22-42-3155 | A-7720-F15FP909B |
| 22-42-3160 | A-7720-A16FP909B | 22-42-3161 | A-7720-B16FP909B | 22-42-3162 | A-7720-C16FP909B | 22-42-3163 | A-7720-D16FP909B | 22-42-3164 | A-7720-E16FP909B | 22-42-3165 | A-7720-F16FP909B |
| 22-42-3170 | A-7720-A17FP909B | 22-42-3171 | A-7720-B17FP909B | 22-42-3172 | A-7720-C17FP909B | 22-42-3173 | A-7720-D17FP909B | 22-42-3174 | A-7720-E17FP909B | 22-42-3175 | A-7720-F17FP909B |
| 22-42-3180 | A-7720-A18FP909B | 22-42-3181 | A-7720-B18FP909B | 22-42-3182 | A-7720-C18FP909B | 22-42-3183 | A-7720-D18FP909B | 22-42-3184 | A-7720-E18FP909B | 22-42-3185 | A-7720-F18FP909B |
| 22-42-3190 | A-7720-A19FP909B | 22-42-3191 | A-7720-B19FP909B | 22-42-3192 | A-7720-C19FP909B | 22-42-3193 | A-7720-D19FP909B | 22-42-3194 | A-7720-E19FP909B | 22-42-3195 | A-7720-F19FP909B |
| 22-42-3200 | A-7720-A20FP909B | 22-42-3201 | A-7720-B20FP909B | 22-42-3202 | A-7720-C20FP909B | 22-42-3203 | A-7720-D20FP909B | 22-42-3204 | A-7720-E20FP909B | 22-42-3205 | A-7720-F20FP909B |
| 22-42-3210 | A-7720-A21FP909B | 22-42-3211 | A-7720-B21FP909B | 22-42-3212 | A-7720-C21FP909B | 22-42-3213 | A-7720-D21FP909B | 22-42-3214 | A-7720-E21FP909B | 22-42-3215 | A-7720-F21FP909B |
| 22-42-3220 | A-7720-A22FP909B | 22-42-3221 | A-7720-B22FP909B | 22-42-3222 | A-7720-C22FP909B | 22-42-3223 | A-7720-D22FP909B | 22-42-3224 | A-7720-E22FP909B | 22-42-3225 | A-7720-F22FP909B |
| 22-42-3230 | A-7720-A23FP909B | 22-42-3231 | A-7720-B23FP909B | 22-42-3232 | A-7720-C23FP909B | 22-42-3233 | A-7720-D23FP909B | 22-42-3234 | A-7720-E23FP909B | 22-42-3235 | A-7720-F23FP909B |
| 22-42-3240 | A-7720-A24FP909B | 22-42-3241 | A-7720-B24FP909B | 22-42-3242 | A-7720-C24FP909B | 22-42-3243 | A-7720-D24FP909B | 22-42-3244 | A-7720-E24FP909B | 22-42-3245 | A-7720-F24FP909B |
| 22-42-3250 | A-7720-A25FP909B | 22-42-3251 | A-7720-B25FP909B | 22-42-3252 | A-7720-C25FP909B | 22-42-3253 | A-7720-D25FP909B | 22-42-3254 | A-7720-E25FP909B | 22-42-3255 | A-7720-F25FP909B |
| 22-42-3260 | A-7720-A26FP909B | 22-42-3261 | A-7720-B26FP909B | 22-42-3262 | A-7720-C26FP909B | 22-42-3263 | A-7720-D26FP909B | 22-42-3264 | A-7720-E26FP909B | 22-42-3265 | A-7720-F26FP909B |
| 22-42-3270 | A-7720-A27FP909B | 22-42-3271 | A-7720-B27FP909B | 22-42-3272 | A-7720-C27FP909B | 22-42-3273 | A-7720-D27FP909B | 22-42-3274 | A-7720-E27FP909B | 22-42-3275 | A-7720-F27FP909B |
| 22-42-3280 | A-7720-A28FP909B | 22-42-3281 | A-7720-B28FP909B | 22-42-3282 | A-7720-C28FP909B | 22-42-3283 | A-7720-D28FP909B | 22-42-3284 | A-7720-E28FP909B | 22-42-3285 | A-7720-F28FP909B |

| | | | | | | | | | | | |
|---|--|--|--|--|--|--|--|--|--|--|--|
| <p>REVISION: BA</p> <p>ECR/ECN INFORMATION: UCP2009-2291</p> <p>DATE: 4/17/2009</p> <p>TITLE: KK 100 IDT CONNECTOR ASSEMBLY</p> <p>SHEET No. 5</p> | | | | | | | | | | | |
|---|--|--|--|--|--|--|--|--|--|--|--|

| | | | |
|--|---|-------------------------------|-------------------------------|
| DOCUMENT NUMBER: SD-7720-001 | CREATED / REVISED BY: MKIPPER | CHECKED BY: SSOUSEK | APPROVED BY: FSMITH |
|--|---|-------------------------------|-------------------------------|

| A-7720-WANFP909B | | A-7720-WBNFP909B | | A-7720-WCNFP909B | | A-7720-WDNFP909B | | A-7720-WENFP909B | | A-7720-WFNFP909B | |
|------------------|-------------------|------------------|-------------------|------------------|-------------------|------------------|-------------------|------------------|-------------------|------------------|-------------------|
| HOUSING | 7720-WAN | HOUSING | 7720-WBN | HOUSING | 7720-WCN | HOUSING | 7720WDN | HOUSING | 7720-WEN | HOUSING | 7720-WFN |
| TERM. NO | 41138-FP909 | TERM. NO | 41138-FP909 | TERM. NO | 41138-FP909 | TERM. NO | 41138-FP909 | TERM. NO | 41138-FP909 | TERM. NO | 41138-FP909 |
| PLATING: | P909 | PLATING: | P909 | PLATING: | P909 | PLATING: | P909 | PLATING: | P909 | PLATING: | P909 |
| COLOR | BLACK | COLOR | BLACK | COLOR | BLACK | COLOR | BLACK | COLOR | BLACK | COLOR | BLACK |
| MATL NO | ENG NO: | MATL NO | ENG NO: | MATL NO | ENG NO: | MATL NO | ENG NO: | MATL NO | ENG NO: | MATL NO | ENG NO: |
| 22-42-6020 | A-7720-WA02FP909B | 22-42-6021 | A-7720-WB02FP909B | 22-42-6022 | A-7720-WC02FP909B | 22-42-6023 | A-7720-WD02FP909B | 22-42-6024 | A-7720-WE02FP909B | 22-42-6025 | A-7720-WF02FP909B |
| 22-42-6030 | A-7720-WA03FP909B | 22-42-6031 | A-7720-WB03FP909B | 22-42-6032 | A-7720-WC03FP909B | 22-42-6033 | A-7720-WD03FP909B | 22-42-6034 | A-7720-WE03FP909B | 22-42-6035 | A-7720-WF03FP909B |
| 22-42-6040 | A-7720-WA04FP909B | 22-42-6041 | A-7720-WB04FP909B | 22-42-6042 | A-7720-WC04FP909B | 22-42-6043 | A-7720-WD04FP909B | 22-42-6044 | A-7720-WE04FP909B | 22-42-6045 | A-7720-WF04FP909B |
| 22-42-6050 | A-7720-WA05FP909B | 22-42-6051 | A-7720-WB05FP909B | 22-42-6052 | A-7720-WC05FP909B | 22-42-6053 | A-7720-WD05FP909B | 22-42-6054 | A-7720-WE05FP909B | 22-42-6055 | A-7720-WF05FP909B |
| 22-42-6060 | A-7720-WA06FP909B | 22-42-6061 | A-7720-WB06FP909B | 22-42-6062 | A-7720-WC06FP909B | 22-42-6063 | A-7720-WD06FP909B | 22-42-6064 | A-7720-WE06FP909B | 22-42-6065 | A-7720-WF06FP909B |
| 22-42-6070 | A-7720-WA07FP909B | 22-42-6071 | A-7720-WB07FP909B | 22-42-6072 | A-7720-WC07FP909B | 22-42-6073 | A-7720-WD07FP909B | 22-42-6074 | A-7720-WE07FP909B | 22-42-6075 | A-7720-WF07FP909B |
| 22-42-6080 | A-7720-WA08FP909B | 22-42-6081 | A-7720-WB08FP909B | 22-42-6082 | A-7720-WC08FP909B | 22-42-6083 | A-7720-WD08FP909B | 22-42-6084 | A-7720-WE08FP909B | 22-42-6085 | A-7720-WF08FP909B |
| 22-42-6090 | A-7720-WA09FP909B | 22-42-6091 | A-7720-WB09FP909B | 22-42-6092 | A-7720-WC09FP909B | 22-42-6093 | A-7720-WD09FP909B | 22-42-6094 | A-7720-WE09FP909B | 22-42-6095 | A-7720-WF09FP909B |
| 22-42-6100 | A-7720-WA10FP909B | 22-42-6101 | A-7720-WB10FP909B | 22-42-6102 | A-7720-WC10FP909B | 22-42-6103 | A-7720-WD10FP909B | 22-42-6104 | A-7720-WE10FP909B | 22-42-6105 | A-7720-WF10FP909B |
| 22-42-6110 | A-7720-WA11FP909B | 22-42-6111 | A-7720-WB11FP909B | 22-42-6112 | A-7720-WC11FP909B | 22-42-6113 | A-7720-WD11FP909B | 22-42-6114 | A-7720-WE11FP909B | 22-42-6115 | A-7720-WF11FP909B |
| 22-42-6120 | A-7720-WA12FP909B | 22-42-6121 | A-7720-WB12FP909B | 22-42-6122 | A-7720-WC12FP909B | 22-42-6123 | A-7720-WD12FP909B | 22-42-6124 | A-7720-WE12FP909B | 22-42-6125 | A-7720-WF12FP909B |
| 22-42-6130 | A-7720-WA13FP909B | 22-42-6131 | A-7720-WB13FP909B | 22-42-6132 | A-7720-WC13FP909B | 22-42-6133 | A-7720-WD13FP909B | 22-42-6134 | A-7720-WE13FP909B | 22-42-6135 | A-7720-WF13FP909B |
| 22-42-6140 | A-7720-WA14FP909B | 22-42-6141 | A-7720-WB14FP909B | 22-42-6142 | A-7720-WC14FP909B | 22-42-6143 | A-7720-WD14FP909B | 22-42-6144 | A-7720-WE14FP909B | 22-42-6145 | A-7720-WF14FP909B |
| 22-42-6150 | A-7720-WA15FP909B | 22-42-6151 | A-7720-WB15FP909B | 22-42-6152 | A-7720-WC15FP909B | 22-42-6153 | A-7720-WD15FP909B | 22-42-6154 | A-7720-WE15FP909B | 22-42-6155 | A-7720-WF15FP909B |
| 22-42-6160 | A-7720-WA16FP909B | 22-42-6161 | A-7720-WB16FP909B | 22-42-6162 | A-7720-WC16FP909B | 22-42-6163 | A-7720-WD16FP909B | 22-42-6164 | A-7720-WE16FP909B | 22-42-6165 | A-7720-WF16FP909B |
| 22-42-6170 | A-7720-WA17FP909B | 22-42-6171 | A-7720-WB17FP909B | 22-42-6172 | A-7720-WC17FP909B | 22-42-6173 | A-7720-WD17FP909B | 22-42-6174 | A-7720-WE17FP909B | 22-42-6175 | A-7720-WF17FP909B |
| 22-42-6180 | A-7720-WA18FP909B | 22-42-6181 | A-7720-WB18FP909B | 22-42-6182 | A-7720-WC18FP909B | 22-42-6183 | A-7720-WD18FP909B | 22-42-6184 | A-7720-WE18FP909B | 22-42-6185 | A-7720-WF18FP909B |
| 22-42-6190 | A-7720-WA19FP909B | 22-42-6191 | A-7720-WB19FP909B | 22-42-6192 | A-7720-WC19FP909B | 22-42-6193 | A-7720-WD19FP909B | 22-42-6194 | A-7720-WE19FP909B | 22-42-6195 | A-7720-WF19FP909B |
| 22-42-6200 | A-7720-WA20FP909B | 22-42-6201 | A-7720-WB20FP909B | 22-42-6202 | A-7720-WC20FP909B | 22-42-6203 | A-7720-WD20FP909B | 22-42-6204 | A-7720-WE20FP909B | 22-42-6205 | A-7720-WF20FP909B |
| 22-42-6210 | A-7720-WA21FP909B | 22-42-6211 | A-7720-WB21FP909B | 22-42-6212 | A-7720-WC21FP909B | 22-42-6213 | A-7720-WD21FP909B | 22-42-6214 | A-7720-WE21FP909B | 22-42-6215 | A-7720-WF21FP909B |
| 22-42-6220 | A-7720-WA22FP909B | 22-42-6221 | A-7720-WB22FP909B | 22-42-6222 | A-7720-WC22FP909B | 22-42-6223 | A-7720-WD22FP909B | 22-42-6224 | A-7720-WE22FP909B | 22-42-6225 | A-7720-WF22FP909B |
| 22-42-6230 | A-7720-WA23FP909B | 22-42-6231 | A-7720-WB23FP909B | 22-42-6232 | A-7720-WC23FP909B | 22-42-6233 | A-7720-WD23FP909B | 22-42-6234 | A-7720-WE23FP909B | 22-42-6235 | A-7720-WF23FP909B |
| 22-42-6240 | A-7720-WA24FP909B | 22-42-6241 | A-7720-WB24FP909B | 22-42-6242 | A-7720-WC24FP909B | 22-42-6243 | A-7720-WD24FP909B | 22-42-6244 | A-7720-WE24FP909B | 22-42-6245 | A-7720-WF24FP909B |
| 22-42-6250 | A-7720-WA25FP909B | 22-42-6251 | A-7720-WB25FP909B | 22-42-6252 | A-7720-WC25FP909B | 22-42-6253 | A-7720-WD25FP909B | 22-42-6254 | A-7720-WE25FP909B | 22-42-6255 | A-7720-WF25FP909B |
| 22-42-6260 | A-7720-WA26FP909B | 22-42-6261 | A-7720-WB26FP909B | 22-42-6262 | A-7720-WC26FP909B | 22-42-6263 | A-7720-WD26FP909B | 22-42-6264 | A-7720-WE26FP909B | 22-42-6265 | A-7720-WF26FP909B |
| 22-42-6270 | A-7720-WA27FP909B | 22-42-6271 | A-7720-WB27FP909B | 22-42-6272 | A-7720-WC27FP909B | 22-42-6273 | A-7720-WD27FP909B | 22-42-6274 | A-7720-WE27FP909B | 22-42-6275 | A-7720-WF27FP909B |
| 22-42-6280 | A-7720-WA28FP909B | 22-42-6281 | A-7720-WB28FP909B | 22-42-6282 | A-7720-WC28FP909B | 22-42-6283 | A-7720-WD28FP909B | 22-42-6284 | A-7720-WE28FP909B | 22-42-6285 | A-7720-WF28FP909B |

| | | | | | | | | | | | |
|--|--|--|--|--|--|--|--|--|--|--|--|
| | | | | | | | | | | | |
|--|--|--|--|--|--|--|--|--|--|--|--|

| | | | |
|-------------------------------|--|---|------------------------------|
| <u>REVISION:</u> BA | <u>ECR/ECN INFORMATION:</u> EC No.: UCP2009-2291 DATE: 4/17/2009 | <u>TITLE:</u> KK 100 IDT CONNECTOR ASSEMBLY | <u>SHEET No.</u> 6 |
|-------------------------------|--|---|------------------------------|

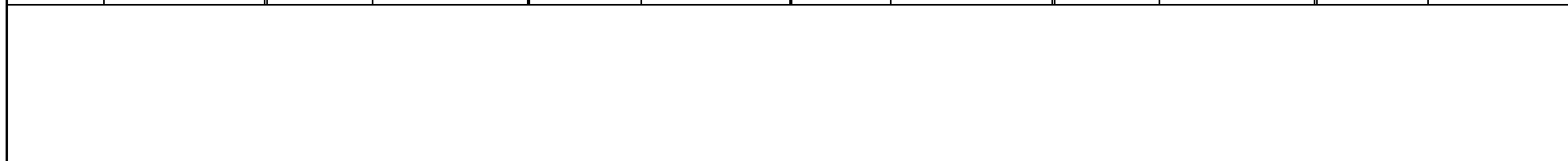
| | | | |
|---|--|--------------------------------------|--------------------------------------|
| <u>DOCUMENT NUMBER:</u> SD-7720-001 | <u>CREATED / REVISED BY:</u> MKIPPER | <u>CHECKED BY:</u> SSOUSEK | <u>APPROVED BY:</u> FSMITH |
|---|--|--------------------------------------|--------------------------------------|

| A-7720-ANA501A | | A-7720-BNA501A | | A-7720-CNA501A | | A-7720-DNA501A | | A-7720-ENA501A | | A-7720-FNA501A | |
|----------------|-----------------|----------------|-----------------|----------------|-----------------|----------------|-----------------|----------------|-----------------|----------------|-----------------|
| HOUSING | 7720-AN | HOUSING | 7720-BN | HOUSING | 7720-CN | HOUSING | 7720-DN | HOUSING | 7720-EN | HOUSING | 7720-FN |
| TERM. NO | 7691-A501 | TERM. NO | 7691-A501 | TERM. NO | 7691-A501 | TERM. NO | 7691-A501 | TERM. NO | 7691-A501 | TERM. NO | 7691-A501 |
| PLATING: | 501 | PLATING: | 501 | PLATING: | 501 | PLATING: | 501 | PLATING: | 501 | PLATING: | 501 |
| COLOR | BROWN | COLOR | BROWN | COLOR | BROWN | COLOR | BROWN | COLOR | BROWN | COLOR | BROWN |
| MATL NO | ENG NO: | MATL NO | ENG NO: | MATL NO | ENG NO: | MATL NO | ENG NO: | MATL NO | ENG NO: | MATL NO | ENG NO: |
| | A-7720-A02A501A | 22-45-8021 | A-7720-B02A501A | 22-45-7021 | A-7720-C02A501A | | A-7720-D02A501A | 22-45-7024 | A-7720-E02A501A | | A-7720-F02A501A |
| | A-7720-A03A501A | 22-45-8031 | A-7720-B03A501A | 22-45-7031 | A-7720-C03A501A | | A-7720-D03A501A | 22-45-7034 | A-7720-E03A501A | | A-7720-F03A501A |
| | A-7720-A04A501A | 22-45-8041 | A-7720-B04A501A | | A-7720-C04A501A | | A-7720-D04A501A | 22-45-7044 | A-7720-E04A501A | | A-7720-F04A501A |
| 22-45-7053 | A-7720-A05A501A | 22-45-8051 | A-7720-B05A501A | | A-7720-C05A501A | | A-7720-D05A501A | 22-45-7054 | A-7720-E05A501A | | A-7720-F05A501A |
| | A-7720-A06A501A | 22-45-8061 | A-7720-B06A501A | 22-45-7061 | A-7720-C06A501A | | A-7720-D06A501A | 22-45-7064 | A-7720-E06A501A | | A-7720-F06A501A |
| 22-45-7073 | A-7720-A07A501A | 22-45-8071 | A-7720-B07A501A | | A-7720-C07A501A | | A-7720-D07A501A | 22-45-7074 | A-7720-E07A501A | | A-7720-F07A501A |
| 22-45-7083 | A-7720-A08A501A | 22-45-8081 | A-7720-B08A501A | 22-45-7081 | A-7720-C08A501A | 22-45-7089 | A-7720-D08A501A | 22-45-7084 | A-7720-E08A501A | 22-45-7087 | A-7720-F08A501A |
| | A-7720-A09A501A | 22-45-8091 | A-7720-B09A501A | | A-7720-C09A501A | | A-7720-D09A501A | 22-45-7094 | A-7720-E09A501A | | A-7720-F09A501A |
| | A-7720-A10A501A | 22-45-8101 | A-7720-B10A501A | | A-7720-C10A501A | | A-7720-D10A501A | 22-45-7104 | A-7720-E10A501A | | A-7720-F10A501A |
| | A-7720-A11A501A | 22-45-8111 | A-7720-B11A501A | | A-7720-C11A501A | | A-7720-D11A501A | 22-45-7114 | A-7720-E11A501A | | A-7720-F11A501A |
| | A-7720-A12A501A | 22-45-8121 | A-7720-B12A501A | | A-7720-C12A501A | | A-7720-D12A501A | 22-45-7124 | A-7720-E12A501A | | A-7720-F12A501A |
| | A-7720-A13A501A | 22-45-8131 | A-7720-B13A501A | 22-45-7131 | A-7720-C13A501A | | A-7720-D13A501A | 22-45-7134 | A-7720-E13A501A | | A-7720-F13A501A |
| 22-45-7143 | A-7720-A14A501A | 22-45-8141 | A-7720-B14A501A | | A-7720-C14A501A | | A-7720-D14A501A | 22-45-7144 | A-7720-E14A501A | | A-7720-F14A501A |
| | A-7720-A15A501A | 22-45-8151 | A-7720-B15A501A | | A-7720-C15A501A | | A-7720-D15A501A | 22-45-7154 | A-7720-E15A501A | | A-7720-F15A501A |
| | A-7720-A16A501A | 22-45-8161 | A-7720-B16A501A | | A-7720-C16A501A | | A-7720-D16A501A | 22-45-7164 | A-7720-E16A501A | | A-7720-F16A501A |
| | A-7720-A17A501A | 22-45-8171 | A-7720-B17A501A | | A-7720-C17A501A | | A-7720-D17A501A | 22-45-7174 | A-7720-E17A501A | | A-7720-F17A501A |
| | A-7720-A18A501A | 22-45-8181 | A-7720-B18A501A | | A-7720-C18A501A | | A-7720-D18A501A | 22-45-7184 | A-7720-E18A501A | | A-7720-F18A501A |
| | A-7720-A19A501A | 22-45-8191 | A-7720-B19A501A | | A-7720-C19A501A | | A-7720-D19A501A | 22-45-7194 | A-7720-E19A501A | | A-7720-F19A501A |
| | A-7720-A20A501A | 22-45-8201 | A-7720-B20A501A | | A-7720-C20A501A | | A-7720-D20A501A | 22-45-7204 | A-7720-E20A501A | | A-7720-F20A501A |
| | A-7720-A21A501A | 22-45-8211 | A-7720-B21A501A | | A-7720-C21A501A | | A-7720-D21A501A | 22-45-7214 | A-7720-E21A501A | | A-7720-F21A501A |
| | A-7720-A22A501A | 22-45-8221 | A-7720-B22A501A | | A-7720-C22A501A | | A-7720-D22A501A | 22-45-7224 | A-7720-E22A501A | | A-7720-F22A501A |
| | A-7720-A23A501A | 22-45-8231 | A-7720-B23A501A | | A-7720-C23A501A | | A-7720-D23A501A | 22-45-7234 | A-7720-E23A501A | | A-7720-F23A501A |
| | A-7720-A24A501A | 22-45-8241 | A-7720-B24A501A | 22-45-7241 | A-7720-C24A501A | | A-7720-D24A501A | 22-45-7244 | A-7720-E24A501A | | A-7720-F24A501A |
| | A-7720-A25A501A | 22-45-8251 | A-7720-B25A501A | | A-7720-C25A501A | | A-7720-D25A501A | 22-45-7254 | A-7720-E25A501A | | A-7720-F25A501A |
| | A-7720-A26A501A | 22-45-8261 | A-7720-B26A501A | | A-7720-C26A501A | | A-7720-D26A501A | 22-45-7264 | A-7720-E26A501A | | A-7720-F26A501A |
| | A-7720-A27A501A | 22-45-8271 | A-7720-B27A501A | | A-7720-C27A501A | | A-7720-D27A501A | 22-45-7274 | A-7720-E27A501A | | A-7720-F27A501A |
| | A-7720-A28A501A | 22-45-8281 | A-7720-B28A501A | | A-7720-C28A501A | | A-7720-D28A501A | 22-45-7284 | A-7720-E28A501A | | A-7720-F28A501A |



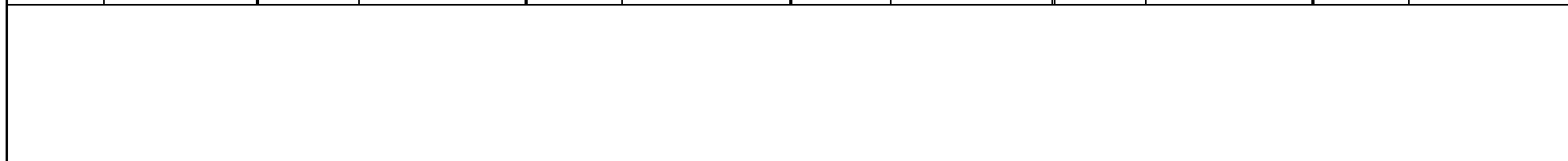
| | | | |
|---|--|---|--------------------------------------|
| REVISION: BA | ECR/ECN INFORMATION: EC No.: UCP2009-2291 DATE: 4/17/2009 | TITLE: KK 100 IDT CONNECTOR ASSEMBLY | SHEET No. 7 |
| DOCUMENT NUMBER: SD-7720-001 | CREATED / REVISED BY: MKIPPER | CHECKED BY: SSOUSEK | APPROVED BY: FSMITH |

| A-7720-ANH501B | | A-7720-BNH501B | | A-7720-CNH501B | | A-7720-DNH501B | | A-7720-ENH501B | | A-7720-FNH501B | |
|----------------|-----------------|----------------|-----------------|----------------|-----------------|----------------|-----------------|----------------|-----------------|----------------|-----------------|
| HOUSING | 7720-AN | HOUSING | 7720-BN | HOUSING | 7720-CN | HOUSING | 7720-DN | HOUSING | 7720-EN | HOUSING | 7720-FN |
| TERM. NO | 41138-H501 | TERM. NO | 41138-H501 | TERM. NO | 41138-H501 | TERM. NO | 41138-H501 | TERM. NO | 41138-H501 | TERM. NO | 41138-H501 |
| PLATING: | 501 | PLATING: | 501 | PLATING: | 501 | PLATING: | 501 | PLATING: | 501 | PLATING: | 501 |
| COLOR | GREEN | COLOR | GREEN | COLOR | GREEN | COLOR | GREEN | COLOR | GREEN | COLOR | GREEN |
| MATL NO | ENG NO: | MATL NO | ENG NO: | MATL NO | ENG NO: | MATL NO | ENG NO: | MATL NO | ENG NO: | MATL NO | ENG NO: |
| 22-45-7025 | A-7720-A02H501B | 22-45-8022 | A-7720-B02H501B | 22-45-7022 | A-7720-C02H501B | 22-45-8027 | A-7720-D02H501B | 22-45-7026 | A-7720-E02H501B | 22-45-7028 | A-7720-F02H501B |
| 22-45-7035 | A-7720-A03H501B | 22-45-8032 | A-7720-B03H501B | | A-7720-C03H501B | 22-45-8037 | A-7720-D03H501B | 22-45-7036 | A-7720-E03H501B | 22-45-7038 | A-7720-F03H501B |
| 22-45-7045 | A-7720-A04H501B | 22-45-8042 | A-7720-B04H501B | | A-7720-C04H501B | 22-45-8047 | A-7720-D04H501B | 22-45-7046 | A-7720-E04H501B | 22-45-7048 | A-7720-F04H501B |
| 22-45-7055 | A-7720-A05H501B | 22-45-8052 | A-7720-B05H501B | | A-7720-C05H501B | 22-45-8057 | A-7720-D05H501B | 22-45-7056 | A-7720-E05H501B | 22-45-7058 | A-7720-F05H501B |
| 22-45-7065 | A-7720-A06H501B | | A-7720-B06H501B | 22-45-7062 | A-7720-C06H501B | 22-45-8067 | A-7720-D06H501B | 22-45-7066 | A-7720-E06H501B | 22-45-7068 | A-7720-F06H501B |
| 22-45-7075 | A-7720-A07H501B | | A-7720-B07H501B | | A-7720-C07H501B | 22-45-8077 | A-7720-D07H501B | 22-45-7076 | A-7720-E07H501B | 22-45-7078 | A-7720-F07H501B |
| 22-45-7085 | A-7720-A08H501B | 22-45-8082 | A-7720-B08H501B | 22-45-7082 | A-7720-C08H501B | 22-45-8087 | A-7720-D08H501B | 22-45-7086 | A-7720-E08H501B | 22-45-7088 | A-7720-F08H501B |
| 22-45-7095 | A-7720-A09H501B | | A-7720-B09H501B | | A-7720-C09H501B | 22-45-8097 | A-7720-D09H501B | 22-45-7096 | A-7720-E09H501B | 22-45-7098 | A-7720-F09H501B |
| 22-45-7105 | A-7720-A10H501B | 22-45-8102 | A-7720-B10H501B | 22-45-7102 | A-7720-C10H501B | 22-45-8107 | A-7720-D10H501B | 22-45-7106 | A-7720-E10H501B | 22-45-7108 | A-7720-F10H501B |
| 22-45-7115 | A-7720-A11H501B | | A-7720-B11H501B | | A-7720-C11H501B | 22-45-8117 | A-7720-D11H501B | 22-45-7116 | A-7720-E11H501B | 22-45-7118 | A-7720-F11H501B |
| 22-45-7125 | A-7720-A12H501B | | A-7720-B12H501B | | A-7720-C12H501B | 22-45-8127 | A-7720-D12H501B | 22-45-7126 | A-7720-E12H501B | 22-45-7128 | A-7720-F12H501B |
| 22-45-7135 | A-7720-A13H501B | | A-7720-B13H501B | 22-45-7132 | A-7720-C13H501B | 22-45-8137 | A-7720-D13H501B | 22-45-7136 | A-7720-E13H501B | 22-45-7138 | A-7720-F13H501B |
| 22-45-7145 | A-7720-A14H501B | | A-7720-B14H501B | 22-45-7142 | A-7720-C14H501B | 22-45-8147 | A-7720-D14H501B | 22-45-7146 | A-7720-E14H501B | 22-45-7148 | A-7720-F14H501B |
| 22-45-7155 | A-7720-A15H501B | | A-7720-B15H501B | | A-7720-C15H501B | 22-45-8157 | A-7720-D15H501B | 22-45-7156 | A-7720-E15H501B | 22-45-7158 | A-7720-F15H501B |
| 22-45-7165 | A-7720-A16H501B | | A-7720-B16H501B | | A-7720-C16H501B | 22-45-8167 | A-7720-D16H501B | 22-45-7166 | A-7720-E16H501B | 22-45-7168 | A-7720-F16H501B |
| 22-45-7175 | A-7720-A17H501B | | A-7720-B17H501B | | A-7720-C17H501B | 22-45-8177 | A-7720-D17H501B | 22-45-7176 | A-7720-E17H501B | 22-45-7178 | A-7720-F17H501B |
| 22-45-7185 | A-7720-A18H501B | | A-7720-B18H501B | | A-7720-C18H501B | 22-45-8187 | A-7720-D18H501B | 22-45-7186 | A-7720-E18H501B | 22-45-7188 | A-7720-F18H501B |
| 22-45-7195 | A-7720-A19H501B | | A-7720-B19H501B | | A-7720-C19H501B | 22-45-8197 | A-7720-D19H501B | 22-45-7196 | A-7720-E19H501B | 22-45-7198 | A-7720-F19H501B |
| 22-45-7205 | A-7720-A20H501B | | A-7720-B20H501B | | A-7720-C20H501B | 22-45-8207 | A-7720-D20H501B | 22-45-7206 | A-7720-E20H501B | 22-45-7208 | A-7720-F20H501B |
| 22-45-7215 | A-7720-A21H501B | | A-7720-B21H501B | | A-7720-C21H501B | 22-45-8217 | A-7720-D21H501B | 22-45-7216 | A-7720-E21H501B | 22-45-7218 | A-7720-F21H501B |
| 22-45-7225 | A-7720-A22H501B | | A-7720-B22H501B | | A-7720-C22H501B | 22-45-8227 | A-7720-D22H501B | 22-45-7226 | A-7720-E22H501B | 22-45-7228 | A-7720-F22H501B |
| 22-45-7235 | A-7720-A23H501B | | A-7720-B23H501B | | A-7720-C23H501B | 22-45-8237 | A-7720-D23H501B | 22-45-7236 | A-7720-E23H501B | 22-45-7238 | A-7720-F23H501B |
| 22-45-7245 | A-7720-A24H501B | | A-7720-B24H501B | | A-7720-C24H501B | 22-45-8247 | A-7720-D24H501B | 22-45-7246 | A-7720-E24H501B | 22-45-7248 | A-7720-F24H501B |
| 22-45-7255 | A-7720-A25H501B | | A-7720-B25H501B | | A-7720-C25H501B | 22-45-8257 | A-7720-D25H501B | 22-45-7256 | A-7720-E25H501B | 22-45-7258 | A-7720-F25H501B |
| 22-45-7265 | A-7720-A26H501B | | A-7720-B26H501B | | A-7720-C26H501B | 22-45-8267 | A-7720-D26H501B | 22-45-7266 | A-7720-E26H501B | 22-45-7268 | A-7720-F26H501B |
| 22-45-7275 | A-7720-A27H501B | | A-7720-B27H501B | | A-7720-C27H501B | 22-45-8277 | A-7720-D27H501B | 22-45-7276 | A-7720-E27H501B | 22-45-7278 | A-7720-F27H501B |
| 22-45-7285 | A-7720-A28H501B | | A-7720-B28H501B | | A-7720-C28H501B | 22-45-8287 | A-7720-D28H501B | 22-45-7286 | A-7720-E28H501B | 22-45-7288 | A-7720-F28H501B |



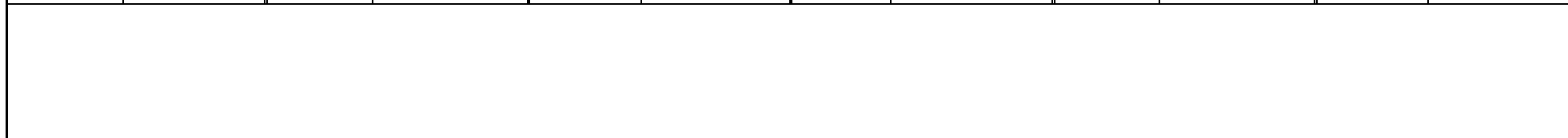
| | | | |
|---|--|---|--------------------------------------|
| <u>REVISION:</u> BA | <u>ECR/ECN INFORMATION:</u> EC No.: UCP2009-2291 DATE: 4/17/2009 | <u>TITLE:</u> KK 100 IDT CONNECTOR ASSEMBLY | <u>SHEET No.</u> 8 |
| <u>DOCUMENT NUMBER:</u> SD-7720-001 | | <u>CREATED / REVISED BY:</u> MKIPPER | <u>CHECKED BY:</u> SSOUSEK |
| | | <u>APPROVED BY:</u> FSMITH | |

| A-7720-WANF501B | | A-7720-WBNF501B | | A-7720-WCNF501B | | A-7720-WDNF501B | | A-7720-WENF501B | | A-7720-WFNF501B | |
|-----------------|------------------|-----------------|------------------|-----------------|------------------|-----------------|------------------|-----------------|------------------|-----------------|------------------|
| HOUSING | 7720-WAN | HOUSING | 7720-WBN | HOUSING | 7720-WCN | HOUSING | 7720-WDN | HOUSING | 7720-WEN | HOUSING | 7720-WFN |
| TERM. NO | 41138-F501 | TERM. NO | 41138-F501 | TERM. NO | 41138-F501 | TERM. NO | 41138-F501 | TERM. NO | 41138-F501 | TERM. NO | 41138-F501 |
| PLATING: | 501 | PLATING: | 501 | PLATING: | 501 | PLATING: | 501 | PLATING: | 501 | PLATING: | 501 |
| COLOR | BLACK | COLOR | BLACK | COLOR | BLACK | COLOR | BLACK | COLOR | BLACK | COLOR | BLACK |
| MATL NO | ENG NO: | MATL NO | ENG NO: | MATL NO | ENG NO: | MATL NO | ENG NO: | MATL NO | ENG NO: | MATL NO | ENG NO: |
| 22-45-6021 | A-7720-WA02F501B | 22-45-6025 | A-7720-WB02F501B | 22-45-6026 | A-7720-WC02F501B | 22-45-6027 | A-7720-WD02F501B | 22-45-6028 | A-7720-WE02F501B | 22-45-6029 | A-7720-WF02F501B |
| 22-45-6031 | A-7720-WA03F501B | 22-45-6035 | A-7720-WB03F501B | 22-45-6036 | A-7720-WC03F501B | 22-45-6037 | A-7720-WD03F501B | 22-45-6038 | A-7720-WE03F501B | 22-45-6039 | A-7720-WF03F501B |
| 22-45-6041 | A-7720-WA04F501B | 22-45-6045 | A-7720-WB04F501B | 22-45-6046 | A-7720-WC04F501B | 22-45-6047 | A-7720-WD04F501B | 22-45-6048 | A-7720-WE04F501B | 22-45-6049 | A-7720-WF04F501B |
| 22-45-6051 | A-7720-WA05F501B | 22-45-6055 | A-7720-WB05F501B | 22-45-6056 | A-7720-WC05F501B | 22-45-6057 | A-7720-WD05F501B | 22-45-6058 | A-7720-WE05F501B | 22-45-6059 | A-7720-WF05F501B |
| 22-45-6061 | A-7720-WA06F501B | 22-45-6065 | A-7720-WB06F501B | 22-45-6066 | A-7720-WC06F501B | 22-45-6067 | A-7720-WD06F501B | 22-45-6068 | A-7720-WE06F501B | 22-45-6069 | A-7720-WF06F501B |
| 22-45-6071 | A-7720-WA07F501B | 22-45-6075 | A-7720-WB07F501B | 22-45-6076 | A-7720-WC07F501B | 22-45-6077 | A-7720-WD07F501B | 22-45-6078 | A-7720-WE07F501B | 22-45-6079 | A-7720-WF07F501B |
| 22-45-6081 | A-7720-WA08F501B | 22-45-6085 | A-7720-WB08F501B | 22-45-6086 | A-7720-WC08F501B | 22-45-6087 | A-7720-WD08F501B | 22-45-6088 | A-7720-WE08F501B | 22-45-6089 | A-7720-WF08F501B |
| 22-45-6091 | A-7720-WA09F501B | 22-45-6095 | A-7720-WB09F501B | 22-45-6096 | A-7720-WC09F501B | 22-45-6097 | A-7720-WD09F501B | 22-45-6098 | A-7720-WE09F501B | 22-45-6099 | A-7720-WF09F501B |
| 22-45-6101 | A-7720-WA10F501B | 22-45-6105 | A-7720-WB10F501B | 22-45-6106 | A-7720-WC10F501B | 22-45-6107 | A-7720-WD10F501B | 22-45-6108 | A-7720-WE10F501B | 22-45-6109 | A-7720-WF10F501B |
| 22-45-6111 | A-7720-WA11F501B | 22-45-6115 | A-7720-WB11F501B | 22-45-6116 | A-7720-WC11F501B | 22-45-6117 | A-7720-WD11F501B | 22-45-6118 | A-7720-WE11F501B | 22-45-6119 | A-7720-WF11F501B |
| 22-45-6121 | A-7720-WA12F501B | 22-45-6125 | A-7720-WB12F501B | 22-45-6126 | A-7720-WC12F501B | 22-45-6127 | A-7720-WD12F501B | 22-45-6128 | A-7720-WE12F501B | 22-45-6129 | A-7720-WF12F501B |
| 22-45-6131 | A-7720-WA13F501B | 22-45-6135 | A-7720-WB13F501B | 22-45-6136 | A-7720-WC13F501B | 22-45-6137 | A-7720-WD13F501B | 22-45-6138 | A-7720-WE13F501B | 22-45-6139 | A-7720-WF13F501B |
| 22-45-6141 | A-7720-WA14F501B | 22-45-6145 | A-7720-WB14F501B | 22-45-6146 | A-7720-WC14F501B | 22-45-6147 | A-7720-WD14F501B | 22-45-6148 | A-7720-WE14F501B | 22-45-6149 | A-7720-WF14F501B |
| 22-45-6151 | A-7720-WA15F501B | 22-45-6155 | A-7720-WB15F501B | 22-45-6156 | A-7720-WC15F501B | 22-45-6157 | A-7720-WD15F501B | 22-45-6158 | A-7720-WE15F501B | 22-45-6159 | A-7720-WF15F501B |
| 22-45-6161 | A-7720-WA16F501B | 22-45-6165 | A-7720-WB16F501B | 22-45-6166 | A-7720-WC16F501B | 22-45-6167 | A-7720-WD16F501B | 22-45-6168 | A-7720-WE16F501B | 22-45-6169 | A-7720-WF16F501B |
| 22-45-6171 | A-7720-WA17F501B | 22-45-6175 | A-7720-WB17F501B | 22-45-6176 | A-7720-WC17F501B | 22-45-6177 | A-7720-WD17F501B | 22-45-6178 | A-7720-WE17F501B | 22-45-6179 | A-7720-WF17F501B |
| 22-45-6181 | A-7720-WA18F501B | 22-45-6185 | A-7720-WB18F501B | 22-45-6186 | A-7720-WC18F501B | 22-45-6187 | A-7720-WD18F501B | 22-45-6188 | A-7720-WE18F501B | 22-45-6189 | A-7720-WF18F501B |
| 22-45-6191 | A-7720-WA19F501B | 22-45-6195 | A-7720-WB19F501B | 22-45-6196 | A-7720-WC19F501B | 22-45-6197 | A-7720-WD19F501B | 22-45-6198 | A-7720-WE19F501B | 22-45-6199 | A-7720-WF19F501B |
| 22-45-6201 | A-7720-WA20F501B | 22-45-6205 | A-7720-WB20F501B | 22-45-6206 | A-7720-WC20F501B | 22-45-6207 | A-7720-WD20F501B | 22-45-6208 | A-7720-WE20F501B | 22-45-6209 | A-7720-WF20F501B |
| 22-45-6211 | A-7720-WA21F501B | 22-45-6215 | A-7720-WB21F501B | 22-45-6216 | A-7720-WC21F501B | 22-45-6217 | A-7720-WD21F501B | 22-45-6218 | A-7720-WE21F501B | 22-45-6219 | A-7720-WF21F501B |
| 22-45-6221 | A-7720-WA22F501B | 22-45-6225 | A-7720-WB22F501B | 22-45-6226 | A-7720-WC22F501B | 22-45-6227 | A-7720-WD22F501B | 22-45-6228 | A-7720-WE22F501B | 22-45-6229 | A-7720-WF22F501B |
| 22-45-6231 | A-7720-WA23F501B | 22-45-6235 | A-7720-WB23F501B | 22-45-6236 | A-7720-WC23F501B | 22-45-6237 | A-7720-WD23F501B | 22-45-6238 | A-7720-WE23F501B | 22-45-6239 | A-7720-WF23F501B |
| 22-45-6241 | A-7720-WA24F501B | 22-45-6245 | A-7720-WB24F501B | 22-45-6246 | A-7720-WC24F501B | 22-45-6247 | A-7720-WD24F501B | 22-45-6248 | A-7720-WE24F501B | 22-45-6249 | A-7720-WF24F501B |
| 22-45-6251 | A-7720-WA25F501B | 22-45-6255 | A-7720-WB25F501B | 22-45-6256 | A-7720-WC25F501B | 22-45-6257 | A-7720-WD25F501B | 22-45-6258 | A-7720-WE25F501B | 22-45-6259 | A-7720-WF25F501B |
| 22-45-6261 | A-7720-WA26F501B | 22-45-6265 | A-7720-WB26F501B | 22-45-6266 | A-7720-WC26F501B | 22-45-6267 | A-7720-WD26F501B | 22-45-6268 | A-7720-WE26F501B | 22-45-6269 | A-7720-WF26F501B |
| 22-45-6271 | A-7720-WA27F501B | 22-45-6275 | A-7720-WB27F501B | 22-45-6276 | A-7720-WC27F501B | 22-45-6277 | A-7720-WD27F501B | 22-45-6278 | A-7720-WE27F501B | 22-45-6279 | A-7720-WF27F501B |
| 22-45-6281 | A-7720-WA28F501B | 22-45-6285 | A-7720-WB28F501B | 22-45-6286 | A-7720-WC28F501B | 22-45-6287 | A-7720-WD28F501B | 22-45-6288 | A-7720-WE28F501B | 22-45-6289 | A-7720-WF28F501B |



| | | | |
|---|--|---|--------------------------------------|
| REVISION: BA | ECR/ECN INFORMATION: | TITLE: KK 100 IDT CONNECTOR ASSEMBLY | SHEET No. 9 |
| | EC No.: UCP2009-2291 DATE: 4/17/2009 | | |
| DOCUMENT NUMBER: SD-7720-001 | CREATED / REVISED BY: MKIPPER | CHECKED BY: SSOUSEK | APPROVED BY: FSMITH |

| A-7720-ANH503B | | A-7720-BNH503B | | A-7720-CNH503B | | A-7720-DNH503B | | A-7720-ENH503B | | A-7720-FNH503B | |
|----------------|-----------------|----------------|-----------------|----------------|-----------------|----------------|-----------------|----------------|-----------------|----------------|-----------------|
| HOUSING | 7720-AN | HOUSING | 7720-BN | HOUSING | 7720-CN | HOUSING | 7720-DN | HOUSING | 7720-EN | HOUSING | 7720-FN |
| TERM. NO | 41138-H503 | TERM. NO | 41138-H503 | TERM. NO | 41138-H503 | TERM. NO | 41138-H503 | TERM. NO | 41138-H503 | TERM. NO | 41138-H503 |
| PLATING: | 503 | PLATING: | 503 | PLATING: | 503 | PLATING: | 503 | PLATING: | 503 | PLATING: | 503 |
| COLOR | GREEN | COLOR | GREEN | COLOR | GREEN | COLOR | GREEN | COLOR | GREEN | COLOR | GREEN |
| MATL NO | ENG NO: | MATL NO | ENG NO: | MATL NO | ENG NO: | MATL NO | ENG NO: | MATL NO | ENG NO: | MATL NO | ENG NO: |
| | A-7720-A02H503B | | A-7720-B02H503B | 22-45-9022 | A-7720-C02H503B | | A-7720-D02H503B | | A-7720-E02H503B | | A-7720-F02H503B |
| | A-7720-A03H503B | | A-7720-B03H503B | 22-45-9032 | A-7720-C03H503B | | A-7720-D03H503B | | A-7720-E03H503B | | A-7720-F03H503B |
| | A-7720-A04H503B | | A-7720-B04H503B | 22-45-9042 | A-7720-C04H503B | | A-7720-D04H503B | 22-45-9045 | A-7720-E04H503B | 22-45-9047 | A-7720-F04H503B |
| | A-7720-A05H503B | | A-7720-B05H503B | 22-45-9052 | A-7720-C05H503B | | A-7720-D05H503B | 22-45-9055 | A-7720-E05H503B | 22-45-9057 | A-7720-F05H503B |
| | A-7720-A06H503B | | A-7720-B06H503B | 22-45-9062 | A-7720-C06H503B | | A-7720-D06H503B | 22-45-9065 | A-7720-E06H503B | 22-45-9067 | A-7720-F06H503B |
| | A-7720-A07H503B | | A-7720-B07H503B | 22-45-9072 | A-7720-C07H503B | | A-7720-D07H503B | | A-7720-E07H503B | 22-45-9077 | A-7720-F07H503B |
| | A-7720-A08H503B | | A-7720-B08H503B | 22-45-9082 | A-7720-C08H503B | | A-7720-D08H503B | | A-7720-E08H503B | 22-45-9087 | A-7720-F08H503B |
| | A-7720-A09H503B | | A-7720-B09H503B | 22-45-9092 | A-7720-C09H503B | | A-7720-D09H503B | | A-7720-E09H503B | | A-7720-F09H503B |
| | A-7720-A10H503B | | A-7720-B10H503B | 22-45-9102 | A-7720-C10H503B | | A-7720-D10H503B | | A-7720-E10H503B | | A-7720-F10H503B |
| | A-7720-A11H503B | | A-7720-B11H503B | 22-45-9112 | A-7720-C11H503B | | A-7720-D11H503B | | A-7720-E11H503B | 22-45-9117 | A-7720-F11H503B |
| | A-7720-A12H503B | | A-7720-B12H503B | 22-45-9122 | A-7720-C12H503B | | A-7720-D12H503B | | A-7720-E12H503B | | A-7720-F12H503B |
| | A-7720-A13H503B | | A-7720-B13H503B | 22-45-9132 | A-7720-C13H503B | | A-7720-D13H503B | | A-7720-E13H503B | | A-7720-F13H503B |
| | A-7720-A14H503B | | A-7720-B14H503B | 22-45-9142 | A-7720-C14H503B | | A-7720-D14H503B | | A-7720-E14H503B | | A-7720-F14H503B |
| | A-7720-A15H503B | | A-7720-B15H503B | 22-45-9152 | A-7720-C15H503B | | A-7720-D15H503B | | A-7720-E15H503B | | A-7720-F15H503B |
| | A-7720-A16H503B | | A-7720-B16H503B | 22-45-9162 | A-7720-C16H503B | | A-7720-D16H503B | | A-7720-E16H503B | | A-7720-F16H503B |
| | A-7720-A17H503B | | A-7720-B17H503B | 22-45-9172 | A-7720-C17H503B | | A-7720-D17H503B | | A-7720-E17H503B | | A-7720-F17H503B |
| | A-7720-A18H503B | | A-7720-B18H503B | 22-45-9182 | A-7720-C18H503B | | A-7720-D18H503B | | A-7720-E18H503B | | A-7720-F18H503B |
| | A-7720-A19H503B | | A-7720-B19H503B | 22-45-9192 | A-7720-C19H503B | | A-7720-D19H503B | | A-7720-E19H503B | | A-7720-F19H503B |
| | A-7720-A20H503B | | A-7720-B20H503B | 22-45-9202 | A-7720-C20H503B | | A-7720-D20H503B | | A-7720-E20H503B | | A-7720-F20H503B |
| | A-7720-A21H503B | | A-7720-B21H503B | 22-45-9212 | A-7720-C21H503B | | A-7720-D21H503B | | A-7720-E21H503B | | A-7720-F21H503B |
| | A-7720-A22H503B | | A-7720-B22H503B | 22-45-9222 | A-7720-C22H503B | | A-7720-D22H503B | | A-7720-E22H503B | | A-7720-F22H503B |
| | A-7720-A23H503B | | A-7720-B23H503B | 22-45-9232 | A-7720-C23H503B | | A-7720-D23H503B | | A-7720-E23H503B | | A-7720-F23H503B |
| | A-7720-A24H503B | | A-7720-B24H503B | 22-45-9242 | A-7720-C24H503B | | A-7720-D24H503B | | A-7720-E24H503B | | A-7720-F24H503B |
| | A-7720-A25H503B | | A-7720-B25H503B | 22-45-9252 | A-7720-C25H503B | | A-7720-D25H503B | | A-7720-E25H503B | | A-7720-F25H503B |
| | A-7720-A26H503B | | A-7720-B26H503B | 22-45-9262 | A-7720-C26H503B | | A-7720-D26H503B | | A-7720-E26H503B | | A-7720-F26H503B |
| | A-7720-A27H503B | | A-7720-B27H503B | 22-45-9272 | A-7720-C27H503B | | A-7720-D27H503B | | A-7720-E27H503B | | A-7720-F27H503B |
| | A-7720-A28H503B | | A-7720-B28H503B | 22-45-9282 | A-7720-C28H503B | | A-7720-D28H503B | | A-7720-E28H503B | | A-7720-F28H503B |



| | | | |
|---|--|---|--------------------------------------|
| REVISION: BA | ECR/ECN INFORMATION: EC No.: UCP2009-2291 DATE: 4/17/2009 | TITLE: KK 100 IDT CONNECTOR ASSEMBLY | SHEET No. 10 |
| DOCUMENT NUMBER: SD-7720-001 | CREATED / REVISED BY: MKIPPER | CHECKED BY: SSOUSEK | APPROVED BY: FSMITH |

| A-7720-ANHP909C | | A-7720-BNHP909C | | A-7720-CNHP909C | | A-7720-DNHP909C | | A-7720-ENHP909C | | A-7720-FNHP909C | |
|-----------------|------------------|-----------------|------------------|-----------------|------------------|-----------------|------------------|-----------------|------------------|-----------------|------------------|
| HOUSING | 7720-AN | HOUSING | 7720-BN | HOUSING | 7720-CN | HOUSING | 7720-DN | HOUSING | 7720-EN | HOUSING | 7720-FN |
| TERM. NO | 41512-HP909 | TERM. NO | 41512-HP909 | TERM. NO | 41512-HP909 | TERM. NO | 41512-HP909 | TERM. NO | 41512-HP909 | TERM. NO | 41512-HP909 |
| PLATING: | P909 | PLATING: | P909 | PLATING: | P909 | PLATING: | P909 | PLATING: | P909 | PLATING: | P909 |
| COLOR | GREEN | COLOR | GREEN | COLOR | GREEN | COLOR | GREEN | COLOR | GREEN | COLOR | GREEN |
| MATL NO | ENG NO: | MATL NO | ENG NO: | MATL NO | ENG NO: | MATL NO | ENG NO: | MATL NO | ENG NO: | MATL NO | ENG NO: |
| 22-42-4020 | A-7720-A02HP909C | 22-42-4021 | A-7720-B02HP909C | 22-42-4022 | A-7720-C02HP909C | 22-42-4023 | A-7720-D02HP909C | 22-42-4024 | A-7720-E02HP909C | 22-42-4025 | A-7720-F02HP909C |
| 22-42-4030 | A-7720-A03HP909C | 22-42-4031 | A-7720-B03HP909C | 22-42-4032 | A-7720-C03HP909C | 22-42-4033 | A-7720-D03HP909C | 22-42-4034 | A-7720-E03HP909C | 22-42-4035 | A-7720-F03HP909C |
| 22-42-4040 | A-7720-A04HP909C | 22-42-4041 | A-7720-B04HP909C | 22-42-4042 | A-7720-C04HP909C | 22-42-4043 | A-7720-D04HP909C | 22-42-4044 | A-7720-E04HP909C | 22-42-4045 | A-7720-F04HP909C |
| 22-42-4050 | A-7720-A05HP909C | 22-42-4051 | A-7720-B05HP909C | 22-42-4052 | A-7720-C05HP909C | 22-42-4053 | A-7720-D05HP909C | 22-42-4054 | A-7720-E05HP909C | 22-42-4055 | A-7720-F05HP909C |
| 22-42-4060 | A-7720-A06HP909C | 22-42-4061 | A-7720-B06HP909C | 22-42-4062 | A-7720-C06HP909C | 22-42-4063 | A-7720-D06HP909C | 22-42-4064 | A-7720-E06HP909C | 22-42-4065 | A-7720-F06HP909C |
| 22-42-4070 | A-7720-A07HP909C | 22-42-4071 | A-7720-B07HP909C | 22-42-4072 | A-7720-C07HP909C | 22-42-4073 | A-7720-D07HP909C | 22-42-4074 | A-7720-E07HP909C | 22-42-4075 | A-7720-F07HP909C |
| 22-42-4080 | A-7720-A08HP909C | 22-42-4081 | A-7720-B08HP909C | 22-42-4082 | A-7720-C08HP909C | 22-42-4083 | A-7720-D08HP909C | 22-42-4084 | A-7720-E08HP909C | 22-42-4085 | A-7720-F08HP909C |
| 22-42-4090 | A-7720-A09HP909C | 22-42-4091 | A-7720-B09HP909C | 22-42-4092 | A-7720-C09HP909C | 22-42-4093 | A-7720-D09HP909C | 22-42-4094 | A-7720-E09HP909C | 22-42-4095 | A-7720-F09HP909C |
| 22-42-4100 | A-7720-A10HP909C | 22-42-4101 | A-7720-B10HP909C | 22-42-4102 | A-7720-C10HP909C | 22-42-4103 | A-7720-D10HP909C | 22-42-4104 | A-7720-E10HP909C | 22-42-4105 | A-7720-F10HP909C |
| 22-42-4110 | A-7720-A11HP909C | 22-42-4111 | A-7720-B11HP909C | 22-42-4112 | A-7720-C11HP909C | 22-42-4113 | A-7720-D11HP909C | 22-42-4114 | A-7720-E11HP909C | 22-42-4115 | A-7720-F11HP909C |
| 22-42-4120 | A-7720-A12HP909C | 22-42-4121 | A-7720-B12HP909C | 22-42-4122 | A-7720-C12HP909C | 22-42-4123 | A-7720-D12HP909C | 22-42-4124 | A-7720-E12HP909C | 22-42-4125 | A-7720-F12HP909C |
| 22-42-4130 | A-7720-A13HP909C | 22-42-4131 | A-7720-B13HP909C | 22-42-4132 | A-7720-C13HP909C | 22-42-4133 | A-7720-D13HP909C | 22-42-4134 | A-7720-E13HP909C | 22-42-4135 | A-7720-F13HP909C |
| 22-42-4140 | A-7720-A14HP909C | 22-42-4141 | A-7720-B14HP909C | 22-42-4142 | A-7720-C14HP909C | 22-42-4143 | A-7720-D14HP909C | 22-42-4144 | A-7720-E14HP909C | 22-42-4145 | A-7720-F14HP909C |
| 22-42-4150 | A-7720-A15HP909C | 22-42-4151 | A-7720-B15HP909C | 22-42-4152 | A-7720-C15HP909C | 22-42-4153 | A-7720-D15HP909C | 22-42-4154 | A-7720-E15HP909C | 22-42-4155 | A-7720-F15HP909C |
| 22-42-4160 | A-7720-A16HP909C | 22-42-4161 | A-7720-B16HP909C | 22-42-4162 | A-7720-C16HP909C | 22-42-4163 | A-7720-D16HP909C | 22-42-4164 | A-7720-E16HP909C | 22-42-4165 | A-7720-F16HP909C |
| 22-42-4170 | A-7720-A17HP909C | 22-42-4171 | A-7720-B17HP909C | 22-42-4172 | A-7720-C17HP909C | 22-42-4173 | A-7720-D17HP909C | 22-42-4174 | A-7720-E17HP909C | 22-42-4175 | A-7720-F17HP909C |
| 22-42-4180 | A-7720-A18HP909C | 22-42-4181 | A-7720-B18HP909C | 22-42-4182 | A-7720-C18HP909C | 22-42-4183 | A-7720-D18HP909C | 22-42-4184 | A-7720-E18HP909C | 22-42-4185 | A-7720-F18HP909C |
| 22-42-4190 | A-7720-A19HP909C | 22-42-4191 | A-7720-B19HP909C | 22-42-4192 | A-7720-C19HP909C | 22-42-4193 | A-7720-D19HP909C | 22-42-4194 | A-7720-E19HP909C | 22-42-4195 | A-7720-F19HP909C |
| 22-42-4200 | A-7720-A20HP909C | 22-42-4201 | A-7720-B20HP909C | 22-42-4202 | A-7720-C20HP909C | 22-42-4203 | A-7720-D20HP909C | 22-42-4204 | A-7720-E20HP909C | 22-42-4205 | A-7720-F20HP909C |
| 22-42-4210 | A-7720-A21HP909C | 22-42-4211 | A-7720-B21HP909C | 22-42-4212 | A-7720-C21HP909C | 22-42-4213 | A-7720-D21HP909C | 22-42-4214 | A-7720-E21HP909C | 22-42-4215 | A-7720-F21HP909C |
| 22-42-4220 | A-7720-A22HP909C | 22-42-4221 | A-7720-B22HP909C | 22-42-4222 | A-7720-C22HP909C | 22-42-4223 | A-7720-D22HP909C | 22-42-4224 | A-7720-E22HP909C | 22-42-4225 | A-7720-F22HP909C |
| 22-42-4230 | A-7720-A23HP909C | 22-42-4231 | A-7720-B23HP909C | 22-42-4232 | A-7720-C23HP909C | 22-42-4233 | A-7720-D23HP909C | 22-42-4234 | A-7720-E23HP909C | 22-42-4235 | A-7720-F23HP909C |
| 22-42-4240 | A-7720-A24HP909C | 22-42-4241 | A-7720-B24HP909C | 22-42-4242 | A-7720-C24HP909C | 22-42-4243 | A-7720-D24HP909C | 22-42-4244 | A-7720-E24HP909C | 22-42-4245 | A-7720-F24HP909C |
| 22-42-4250 | A-7720-A25HP909C | 22-42-4251 | A-7720-B25HP909C | 22-42-4252 | A-7720-C25HP909C | 22-42-4253 | A-7720-D25HP909C | 22-42-4254 | A-7720-E25HP909C | 22-42-4255 | A-7720-F25HP909C |
| 22-42-4260 | A-7720-A26HP909C | 22-42-4261 | A-7720-B26HP909C | 22-42-4262 | A-7720-C26HP909C | 22-42-4263 | A-7720-D26HP909C | 22-42-4264 | A-7720-E26HP909C | 22-42-4265 | A-7720-F26HP909C |
| 22-42-4270 | A-7720-A27HP909C | 22-42-4271 | A-7720-B27HP909C | 22-42-4272 | A-7720-C27HP909C | 22-42-4273 | A-7720-D27HP909C | 22-42-4274 | A-7720-E27HP909C | 22-42-4275 | A-7720-F27HP909C |
| 22-42-4280 | A-7720-A28HP909C | 22-42-4281 | A-7720-B28HP909C | 22-42-4282 | A-7720-C28HP909C | 22-42-4283 | A-7720-D28HP909C | 22-42-4284 | A-7720-E28HP909C | 22-42-4285 | A-7720-F28HP909C |

| | | | | |
|-------------------------------|--|--|---|-------------------------------|
| REVISION: BA | | ECR/ECN INFORMATION: EC No.: UCP2009-2291 DATE: 4/17/2009 | TITLE: KK 100 IDT CONNECTOR ASSEMBLY | SHEET No. 11 |
|-------------------------------|--|--|---|-------------------------------|

| | | | |
|---|--|--------------------------------------|--------------------------------------|
| DOCUMENT NUMBER: SD-7720-001 | CREATED / REVISED BY: MKIPPER | CHECKED BY: SSOUSEK | APPROVED BY: FSMITH |
|---|--|--------------------------------------|--------------------------------------|

| A-7720-ANFP909C | | A-7720-BNFP909C | | A-7720-CNFP909C | | A-7720-DNFP909C | | A-7720-ENFP909C | | A-7720-FNFP909C | |
|-----------------|------------------|-----------------|------------------|-----------------|------------------|-----------------|------------------|-----------------|------------------|-----------------|------------------|
| HOUSING | 7720-AN | HOUSING | 7720-BN | HOUSING | 7720-CN | HOUSING | 7720-DN | HOUSING | 7720-EN | HOUSING | 7720-FN |
| TERM. NO | 41512-FP909 | TERM. NO | 41512-FP909 | TERM. NO | 41512-FP909 | TERM. NO | 41512-FP909 | TERM. NO | 41512-FP909 | TERM. NO | 41512-FP909 |
| PLATING: | P909 | PLATING: | P909 | PLATING: | P909 | PLATING: | P909 | PLATING: | P909 | PLATING: | P909 |
| COLOR | BLACK | COLOR | BLACK | COLOR | BLACK | COLOR | BLACK | COLOR | BLACK | COLOR | BLACK |
| MATL NO | ENG NO: | MATL NO | ENG NO: | MATL NO | ENG NO: | MATL NO | ENG NO: | MATL NO | ENG NO: | MATL NO | ENG NO: |
| 22-42-5020 | A-7720-A02FP909C | 22-42-5021 | A-7720-B02FP909C | 22-42-5022 | A-7720-C02FP909C | 22-42-5023 | A-7720-D02FP909C | 22-42-5024 | A-7720-E02FP909C | 22-42-5025 | A-7720-F02FP909C |
| 22-42-5030 | A-7720-A03FP909C | 22-42-5031 | A-7720-B03FP909C | 22-42-5032 | A-7720-C03FP909C | 22-42-5033 | A-7720-D03FP909C | 22-42-5034 | A-7720-E03FP909C | 22-42-5035 | A-7720-F03FP909C |
| 22-42-5040 | A-7720-A04FP909C | 22-42-5041 | A-7720-B04FP909C | 22-42-5042 | A-7720-C04FP909C | 22-42-5043 | A-7720-D04FP909C | 22-42-5044 | A-7720-E04FP909C | 22-42-5045 | A-7720-F04FP909C |
| 22-42-5050 | A-7720-A05FP909C | 22-42-5051 | A-7720-B05FP909C | 22-42-5052 | A-7720-C05FP909C | 22-42-5053 | A-7720-D05FP909C | 22-42-5054 | A-7720-E05FP909C | 22-42-5055 | A-7720-F05FP909C |
| 22-42-5060 | A-7720-A06FP909C | 22-42-5061 | A-7720-B06FP909C | 22-42-5062 | A-7720-C06FP909C | 22-42-5063 | A-7720-D06FP909C | 22-42-5064 | A-7720-E06FP909C | 22-42-5065 | A-7720-F06FP909C |
| 22-42-5070 | A-7720-A07FP909C | 22-42-5071 | A-7720-B07FP909C | 22-42-5072 | A-7720-C07FP909C | 22-42-5073 | A-7720-D07FP909C | 22-42-5074 | A-7720-E07FP909C | 22-42-5075 | A-7720-F07FP909C |
| 22-42-5080 | A-7720-A08FP909C | 22-42-5081 | A-7720-B08FP909C | 22-42-5082 | A-7720-C08FP909C | 22-42-5083 | A-7720-D08FP909C | 22-42-5084 | A-7720-E08FP909C | 22-42-5085 | A-7720-F08FP909C |
| 22-42-5090 | A-7720-A09FP909C | 22-42-5091 | A-7720-B09FP909C | 22-42-5092 | A-7720-C09FP909C | 22-42-5093 | A-7720-D09FP909C | 22-42-5094 | A-7720-E09FP909C | 22-42-5095 | A-7720-F09FP909C |
| 22-42-5100 | A-7720-A10FP909C | 22-42-5101 | A-7720-B10FP909C | 22-42-5102 | A-7720-C10FP909C | 22-42-5103 | A-7720-D10FP909C | 22-42-5104 | A-7720-E10FP909C | 22-42-5105 | A-7720-F10FP909C |
| 22-42-5110 | A-7720-A11FP909C | 22-42-5111 | A-7720-B11FP909C | 22-42-5112 | A-7720-C11FP909C | 22-42-5113 | A-7720-D11FP909C | 22-42-5114 | A-7720-E11FP909C | 22-42-5115 | A-7720-F11FP909C |
| 22-42-5120 | A-7720-A12FP909C | 22-42-5121 | A-7720-B12FP909C | 22-42-5122 | A-7720-C12FP909C | 22-42-5123 | A-7720-D12FP909C | 22-42-5124 | A-7720-E12FP909C | 22-42-5125 | A-7720-F12FP909C |
| 22-42-5130 | A-7720-A13FP909C | 22-42-5131 | A-7720-B13FP909C | 22-42-5132 | A-7720-C13FP909C | 22-42-5133 | A-7720-D13FP909C | 22-42-5134 | A-7720-E13FP909C | 22-42-5135 | A-7720-F13FP909C |
| 22-42-5140 | A-7720-A14FP909C | 22-42-5141 | A-7720-B14FP909C | 22-42-5142 | A-7720-C14FP909C | 22-42-5143 | A-7720-D14FP909C | 22-42-5144 | A-7720-E14FP909C | 22-42-5145 | A-7720-F14FP909C |
| 22-42-5150 | A-7720-A15FP909C | 22-42-5151 | A-7720-B15FP909C | 22-42-5152 | A-7720-C15FP909C | 22-42-5153 | A-7720-D15FP909C | 22-42-5154 | A-7720-E15FP909C | 22-42-5155 | A-7720-F15FP909C |
| 22-42-5160 | A-7720-A16FP909C | 22-42-5161 | A-7720-B16FP909C | 22-42-5162 | A-7720-C16FP909C | 22-42-5163 | A-7720-D16FP909C | 22-42-5164 | A-7720-E16FP909C | 22-42-5165 | A-7720-F16FP909C |
| 22-42-5170 | A-7720-A17FP909C | 22-42-5171 | A-7720-B17FP909C | 22-42-5172 | A-7720-C17FP909C | 22-42-5173 | A-7720-D17FP909C | 22-42-5174 | A-7720-E17FP909C | 22-42-5175 | A-7720-F17FP909C |
| 22-42-5180 | A-7720-A18FP909C | 22-42-5181 | A-7720-B18FP909C | 22-42-5182 | A-7720-C18FP909C | 22-42-5183 | A-7720-D18FP909C | 22-42-5184 | A-7720-E18FP909C | 22-42-5185 | A-7720-F18FP909C |
| 22-42-5190 | A-7720-A19FP909C | 22-42-5191 | A-7720-B19FP909C | 22-42-5192 | A-7720-C19FP909C | 22-42-5193 | A-7720-D19FP909C | 22-42-5194 | A-7720-E19FP909C | 22-42-5195 | A-7720-F19FP909C |
| 22-42-5200 | A-7720-A20FP909C | 22-42-5201 | A-7720-B20FP909C | 22-42-5202 | A-7720-C20FP909C | 22-42-5203 | A-7720-D20FP909C | 22-42-5204 | A-7720-E20FP909C | 22-42-5205 | A-7720-F20FP909C |
| 22-42-5210 | A-7720-A21FP909C | 22-42-5211 | A-7720-B21FP909C | 22-42-5212 | A-7720-C21FP909C | 22-42-5213 | A-7720-D21FP909C | 22-42-5214 | A-7720-E21FP909C | 22-42-5215 | A-7720-F21FP909C |
| 22-42-5220 | A-7720-A22FP909C | 22-42-5221 | A-7720-B22FP909C | 22-42-5222 | A-7720-C22FP909C | 22-42-5223 | A-7720-D22FP909C | 22-42-5224 | A-7720-E22FP909C | 22-42-5225 | A-7720-F22FP909C |
| 22-42-5230 | A-7720-A23FP909C | 22-42-5231 | A-7720-B23FP909C | 22-42-5232 | A-7720-C23FP909C | 22-42-5233 | A-7720-D23FP909C | 22-42-5234 | A-7720-E23FP909C | 22-42-5235 | A-7720-F23FP909C |
| 22-42-5240 | A-7720-A24FP909C | 22-42-5241 | A-7720-B24FP909C | 22-42-5242 | A-7720-C24FP909C | 22-42-5243 | A-7720-D24FP909C | 22-42-5244 | A-7720-E24FP909C | 22-42-5245 | A-7720-F24FP909C |
| 22-42-5250 | A-7720-A25FP909C | 22-42-5251 | A-7720-B25FP909C | 22-42-5252 | A-7720-C25FP909C | 22-42-5253 | A-7720-D25FP909C | 22-42-5254 | A-7720-E25FP909C | 22-42-5255 | A-7720-F25FP909C |
| 22-42-5260 | A-7720-A26FP909C | 22-42-5261 | A-7720-B26FP909C | 22-42-5262 | A-7720-C26FP909C | 22-42-5263 | A-7720-D26FP909C | 22-42-5264 | A-7720-E26FP909C | 22-42-5265 | A-7720-F26FP909C |
| 22-42-5270 | A-7720-A27FP909C | 22-42-5271 | A-7720-B27FP909C | 22-42-5272 | A-7720-C27FP909C | 22-42-5273 | A-7720-D27FP909C | 22-42-5274 | A-7720-E27FP909C | 22-42-5275 | A-7720-F27FP909C |
| 22-42-5280 | A-7720-A28FP909C | 22-42-5281 | A-7720-B28FP909C | 22-42-5282 | A-7720-C28FP909C | 22-42-5283 | A-7720-D28FP909C | 22-42-5284 | A-7720-E28FP909C | 22-42-5285 | A-7720-F28FP909C |

| | | | | | | | | | | | |
|--|--|--|--|--|--|--|--|--|--|--|--|
| | | | | | | | | | | | |
|--|--|--|--|--|--|--|--|--|--|--|--|

| | | | |
|-------------------------------|--|---|-------------------------------|
| <u>REVISION:</u> BA | <u>ECR/ECN INFORMATION:</u> EC No.: UCP2009-2291 DATE: 4/17/2009 | <u>TITLE:</u> KK 100 IDT CONNECTOR ASSEMBLY | <u>SHEET No.</u> 12 |
|-------------------------------|--|---|-------------------------------|

| | | | |
|---|--|--------------------------------------|--------------------------------------|
| <u>DOCUMENT NUMBER:</u> SD-7720-001 | <u>CREATED / REVISED BY:</u> MKIPPER | <u>CHECKED BY:</u> SSOUSEK | <u>APPROVED BY:</u> FSMITH |
|---|--|--------------------------------------|--------------------------------------|

| A-7720-WANFP909C | | A-7720-WBNFP909C | | A-7720-WCNFP909C | | A-7720-WDNFP909C | | A-7720-WENFP909C | | A-7720-WFNFP909C | |
|------------------|-------------------|------------------|-------------------|------------------|-------------------|------------------|-------------------|------------------|-------------------|------------------|-------------------|
| HOUSING | 7720-WAN | HOUSING | 7720-WBN | HOUSING | 7720-WCN | HOUSING | 7720-WDN | HOUSING | 7720-WEN | HOUSING | 7720-WFN |
| TERM. NO | 41512-FP909 | TERM. NO | 41512-FP909 | TERM. NO | 41512-FP909 | TERM. NO | 41512-FP909 | TERM. NO | 41512-FP909 | TERM. NO | 41512-FP909 |
| PLATING: | P909 | PLATING: | P909 | PLATING: | P909 | PLATING: | P909 | PLATING: | P909 | PLATING: | P909 |
| COLOR | BLACK | COLOR | BLACK | COLOR | BLACK | COLOR | BLACK | COLOR | BLACK | COLOR | BLACK |
| MATL NO | ENG NO: | MATL NO | ENG NO: | MATL NO | ENG NO: | MATL NO | ENG NO: | MATL NO | ENG NO: | MATL NO | ENG NO: |
| 22-42-7020 | A-7720-WA02FP909C | 22-42-7021 | A-7720-WB02FP909C | 22-42-7022 | A-7720-WC02FP909C | 22-42-7023 | A-7720-WD02FP909C | 22-42-7024 | A-7720-WE02FP909C | 22-42-7025 | A-7720-WF02FP909C |
| 22-42-7030 | A-7720-WA03FP909C | 22-42-7031 | A-7720-WB03FP909C | 22-42-7032 | A-7720-WC03FP909C | 22-42-7033 | A-7720-WD03FP909C | 22-42-7034 | A-7720-WE03FP909C | 22-42-7035 | A-7720-WF03FP909C |
| 22-42-7040 | A-7720-WA04FP909C | 22-42-7041 | A-7720-WB04FP909C | 22-42-7042 | A-7720-WC04FP909C | 22-42-7043 | A-7720-WD04FP909C | 22-42-7044 | A-7720-WE04FP909C | 22-42-7045 | A-7720-WF04FP909C |
| 22-42-7050 | A-7720-WA05FP909C | 22-42-7051 | A-7720-WB05FP909C | 22-42-7052 | A-7720-WC05FP909C | 22-42-7053 | A-7720-WD05FP909C | 22-42-7054 | A-7720-WE05FP909C | 22-42-7055 | A-7720-WF05FP909C |
| 22-42-7060 | A-7720-WA06FP909C | 22-42-7061 | A-7720-WB06FP909C | 22-42-7062 | A-7720-WC06FP909C | 22-42-7063 | A-7720-WD06FP909C | 22-42-7064 | A-7720-WE06FP909C | 22-42-7065 | A-7720-WF06FP909C |
| 22-42-7070 | A-7720-WA07FP909C | 22-42-7071 | A-7720-WB07FP909C | 22-42-7072 | A-7720-WC07FP909C | 22-42-7073 | A-7720-WD07FP909C | 22-42-7074 | A-7720-WE07FP909C | 22-42-7075 | A-7720-WF07FP909C |
| 22-42-7080 | A-7720-WA08FP909C | 22-42-7081 | A-7720-WB08FP909C | 22-42-7082 | A-7720-WC08FP909C | 22-42-7083 | A-7720-WD08FP909C | 22-42-7084 | A-7720-WE08FP909C | 22-42-7085 | A-7720-WF08FP909C |
| 22-42-7090 | A-7720-WA09FP909C | 22-42-7091 | A-7720-WB09FP909C | 22-42-7092 | A-7720-WC09FP909C | 22-42-7093 | A-7720-WD09FP909C | 22-42-7094 | A-7720-WE09FP909C | 22-42-7095 | A-7720-WF09FP909C |
| 22-42-7100 | A-7720-WA10FP909C | 22-42-7101 | A-7720-WB10FP909C | 22-42-7102 | A-7720-WC10FP909C | 22-42-7103 | A-7720-WD10FP909C | 22-42-7104 | A-7720-WE10FP909C | 22-42-7105 | A-7720-WF10FP909C |
| 22-42-7110 | A-7720-WA11FP909C | 22-42-7111 | A-7720-WB11FP909C | 22-42-7112 | A-7720-WC11FP909C | 22-42-7113 | A-7720-WD11FP909C | 22-42-7114 | A-7720-WE11FP909C | 22-42-7115 | A-7720-WF11FP909C |
| 22-42-7120 | A-7720-WA12FP909C | 22-42-7121 | A-7720-WB12FP909C | 22-42-7122 | A-7720-WC12FP909C | 22-42-7123 | A-7720-WD12FP909C | 22-42-7124 | A-7720-WE12FP909C | 22-42-7125 | A-7720-WF12FP909C |
| 22-42-7130 | A-7720-WA13FP909C | 22-42-7131 | A-7720-WB13FP909C | 22-42-7132 | A-7720-WC13FP909C | 22-42-7133 | A-7720-WD13FP909C | 22-42-7134 | A-7720-WE13FP909C | 22-42-7135 | A-7720-WF13FP909C |
| 22-42-7140 | A-7720-WA14FP909C | 22-42-7141 | A-7720-WB14FP909C | 22-42-7142 | A-7720-WC14FP909C | 22-42-7143 | A-7720-WD14FP909C | 22-42-7144 | A-7720-WE14FP909C | 22-42-7145 | A-7720-WF14FP909C |
| 22-42-7150 | A-7720-WA15FP909C | 22-42-7151 | A-7720-WB15FP909C | 22-42-7152 | A-7720-WC15FP909C | 22-42-7153 | A-7720-WD15FP909C | 22-42-7154 | A-7720-WE15FP909C | 22-42-7155 | A-7720-WF15FP909C |
| 22-42-7160 | A-7720-WA16FP909C | 22-42-7161 | A-7720-WB16FP909C | 22-42-7162 | A-7720-WC16FP909C | 22-42-7163 | A-7720-WD16FP909C | 22-42-7164 | A-7720-WE16FP909C | 22-42-7165 | A-7720-WF16FP909C |
| 22-42-7170 | A-7720-WA17FP909C | 22-42-7171 | A-7720-WB17FP909C | 22-42-7172 | A-7720-WC17FP909C | 22-42-7173 | A-7720-WD17FP909C | 22-42-7174 | A-7720-WE17FP909C | 22-42-7175 | A-7720-WF17FP909C |
| 22-42-7180 | A-7720-WA18FP909C | 22-42-7181 | A-7720-WB18FP909C | 22-42-7182 | A-7720-WC18FP909C | 22-42-7183 | A-7720-WD18FP909C | 22-42-7184 | A-7720-WE18FP909C | 22-42-7185 | A-7720-WF18FP909C |
| 22-42-7190 | A-7720-WA19FP909C | 22-42-7191 | A-7720-WB19FP909C | 22-42-7192 | A-7720-WC19FP909C | 22-42-7193 | A-7720-WD19FP909C | 22-42-7194 | A-7720-WE19FP909C | 22-42-7195 | A-7720-WF19FP909C |
| 22-42-7200 | A-7720-WA20FP909C | 22-42-7201 | A-7720-WB20FP909C | 22-42-7202 | A-7720-WC20FP909C | 22-42-7203 | A-7720-WD20FP909C | 22-42-7204 | A-7720-WE20FP909C | 22-42-7205 | A-7720-WF20FP909C |
| 22-42-7210 | A-7720-WA21FP909C | 22-42-7211 | A-7720-WB21FP909C | 22-42-7212 | A-7720-WC21FP909C | 22-42-7213 | A-7720-WD21FP909C | 22-42-7214 | A-7720-WE21FP909C | 22-42-7215 | A-7720-WF21FP909C |
| 22-42-7220 | A-7720-WA22FP909C | 22-42-7221 | A-7720-WB22FP909C | 22-42-7222 | A-7720-WC22FP909C | 22-42-7223 | A-7720-WD22FP909C | 22-42-7224 | A-7720-WE22FP909C | 22-42-7225 | A-7720-WF22FP909C |
| 22-42-7230 | A-7720-WA23FP909C | 22-42-7231 | A-7720-WB23FP909C | 22-42-7232 | A-7720-WC23FP909C | 22-42-7233 | A-7720-WD23FP909C | 22-42-7234 | A-7720-WE23FP909C | 22-42-7235 | A-7720-WF23FP909C |
| 22-42-7240 | A-7720-WA24FP909C | 22-42-7241 | A-7720-WB24FP909C | 22-42-7242 | A-7720-WC24FP909C | 22-42-7243 | A-7720-WD24FP909C | 22-42-7244 | A-7720-WE24FP909C | 22-42-7245 | A-7720-WF24FP909C |
| 22-42-7250 | A-7720-WA25FP909C | 22-42-7251 | A-7720-WB25FP909C | 22-42-7252 | A-7720-WC25FP909C | 22-42-7253 | A-7720-WD25FP909C | 22-42-7254 | A-7720-WE25FP909C | 22-42-7255 | A-7720-WF25FP909C |
| 22-42-7260 | A-7720-WA26FP909C | 22-42-7261 | A-7720-WB26FP909C | 22-42-7262 | A-7720-WC26FP909C | 22-42-7263 | A-7720-WD26FP909C | 22-42-7264 | A-7720-WE26FP909C | 22-42-7265 | A-7720-WF26FP909C |
| 22-42-7270 | A-7720-WA27FP909C | 22-42-7271 | A-7720-WB27FP909C | 22-42-7272 | A-7720-WC27FP909C | 22-42-7273 | A-7720-WD27FP909C | 22-42-7274 | A-7720-WE27FP909C | 22-42-7275 | A-7720-WF27FP909C |
| 22-42-7280 | A-7720-WA28FP909C | 22-42-7281 | A-7720-WB28FP909C | 22-42-7282 | A-7720-WC28FP909C | 22-42-7283 | A-7720-WD28FP909C | 22-42-7284 | A-7720-WE28FP909C | 22-42-7285 | A-7720-WF28FP909C |

| | | | | | | | | | | | |
|--|--|--|--|--|--|--|--|--|--|--|--|
| | | | | | | | | | | | |
|--|--|--|--|--|--|--|--|--|--|--|--|

| | | | | | | | | | | | |
|---|-----------------------------|--|---|--|--|--|--|--|--|------------------|--|
| REVISION: BA | ECR/ECN INFORMATION: | | TITLE: KK 100 IDT CONNECTOR ASSEMBLY | | | | | | | SHEET No. | |
| | EC No.: UCP2009-2291 | | | | | | | | | 13 | |
| DOCUMENT NUMBER: SD-7720-001 | | | CREATED / REVISED BY: MKIPPER | | | CHECKED BY: SSOUSEK | | | APPROVED BY: FSMITH | | |

| A-7720-ANA228A | | A-7720-BNA228A | | A-7720-CNA228A | | A-7720-DNA228A | | A-7720-ENA228A | | A-7720-FNA228A | |
|----------------|-----------------|----------------|-----------------|----------------|-----------------|----------------|-----------------|----------------|-----------------|----------------|-----------------|
| HOUSING | 7720-AN | HOUSING | 7720-BN | HOUSING | 7720-CN | HOUSING | 7720-DN | HOUSING | 7720-EN | HOUSING | 7720-FN |
| TERM. NO | 7691-A228 | TERM. NO | 7691-A228 | TERM. NO | 7691-A228 | TERM. NO | 7691-A228 | TERM. NO | 7691-A228 | TERM. NO | 7691-A228 |
| PLATING: | 228 | PLATING: | 228 | PLATING: | 228 | PLATING: | 228 | PLATING: | 228 | PLATING: | 228 |
| COLOR | BROWN | COLOR | BROWN | COLOR | BROWN | COLOR | BROWN | COLOR | BROWN | COLOR | BROWN |
| MATL NO | ENG NO: | MATL NO | ENG NO: | MATL NO | ENG NO: | MATL NO | ENG NO: | MATL NO | ENG NO: | MATL NO | ENG NO: |
| | A-7720-A02A228A | | A-7720-B02A228A | 22-45-9021 | A-7720-C02A228A | 22-45-9020 | A-7720-D02A228A | 22-45-9024 | A-7720-E02A228A | 22-45-9029 | A-7720-F02A228A |
| | A-7720-A03A228A | | A-7720-B03A228A | 22-45-9031 | A-7720-C03A228A | 22-45-9030 | A-7720-D03A228A | 22-45-9034 | A-7720-E03A228A | 22-45-9039 | A-7720-F03A228A |
| | A-7720-A04A228A | | A-7720-B04A228A | 22-45-9041 | A-7720-C04A228A | 22-45-9040 | A-7720-D04A228A | 22-45-9044 | A-7720-E04A228A | 22-45-9049 | A-7720-F04A228A |
| | A-7720-A05A228A | | A-7720-B05A228A | 22-45-9051 | A-7720-C05A228A | 22-45-9050 | A-7720-D05A228A | 22-45-9054 | A-7720-E05A228A | 22-45-9059 | A-7720-F05A228A |
| | A-7720-A06A228A | | A-7720-B06A228A | 22-45-9061 | A-7720-C06A228A | 22-45-9060 | A-7720-D06A228A | 22-45-9064 | A-7720-E06A228A | 22-45-9069 | A-7720-F06A228A |
| | A-7720-A07A228A | | A-7720-B07A228A | 22-45-9071 | A-7720-C07A228A | 22-45-9070 | A-7720-D07A228A | 22-45-9074 | A-7720-E07A228A | 22-45-9079 | A-7720-F07A228A |
| | A-7720-A08A228A | | A-7720-B08A228A | 22-45-9081 | A-7720-C08A228A | 22-45-9080 | A-7720-D08A228A | 22-45-9084 | A-7720-E08A228A | 22-45-9089 | A-7720-F08A228A |
| | A-7720-A09A228A | | A-7720-B09A228A | 22-45-9091 | A-7720-C09A228A | 22-45-9090 | A-7720-D09A228A | 22-45-9094 | A-7720-E09A228A | 22-45-9099 | A-7720-F09A228A |
| | A-7720-A10A228A | | A-7720-B10A228A | 22-45-9101 | A-7720-C10A228A | 22-45-9100 | A-7720-D10A228A | 22-45-9104 | A-7720-E10A228A | 22-45-9109 | A-7720-F10A228A |
| | A-7720-A11A228A | | A-7720-B11A228A | 22-45-9111 | A-7720-C11A228A | 22-45-9110 | A-7720-D11A228A | 22-45-9114 | A-7720-E11A228A | 22-45-9119 | A-7720-F11A228A |
| | A-7720-A12A228A | | A-7720-B12A228A | 22-45-9121 | A-7720-C12A228A | 22-45-9120 | A-7720-D12A228A | 22-45-9124 | A-7720-E12A228A | 22-45-9129 | A-7720-F12A228A |
| | A-7720-A13A228A | | A-7720-B13A228A | 22-45-9131 | A-7720-C13A228A | 22-45-9130 | A-7720-D13A228A | 22-45-9134 | A-7720-E13A228A | 22-45-9139 | A-7720-F13A228A |
| | A-7720-A14A228A | | A-7720-B14A228A | 22-45-9141 | A-7720-C14A228A | 22-45-9140 | A-7720-D14A228A | 22-45-9144 | A-7720-E14A228A | 22-45-9149 | A-7720-F14A228A |
| | A-7720-A15A228A | | A-7720-B15A228A | 22-45-9151 | A-7720-C15A228A | 22-45-9150 | A-7720-D15A228A | 22-45-9154 | A-7720-E15A228A | 22-45-9159 | A-7720-F15A228A |
| | A-7720-A16A228A | | A-7720-B16A228A | 22-45-9161 | A-7720-C16A228A | 22-45-9160 | A-7720-D16A228A | 22-45-9164 | A-7720-E16A228A | 22-45-9169 | A-7720-F16A228A |
| | A-7720-A17A228A | | A-7720-B17A228A | 22-45-9171 | A-7720-C17A228A | 22-45-9170 | A-7720-D17A228A | 22-45-9174 | A-7720-E17A228A | 22-45-9179 | A-7720-F17A228A |
| | A-7720-A18A228A | | A-7720-B18A228A | 22-45-9181 | A-7720-C18A228A | 22-45-9180 | A-7720-D18A228A | 22-45-9184 | A-7720-E18A228A | 22-45-9189 | A-7720-F18A228A |
| | A-7720-A19A228A | | A-7720-B19A228A | 22-45-9191 | A-7720-C19A228A | 22-45-9190 | A-7720-D19A228A | 22-45-9194 | A-7720-E19A228A | 22-45-9199 | A-7720-F19A228A |
| | A-7720-A20A228A | | A-7720-B20A228A | 22-45-9201 | A-7720-C20A228A | 22-45-9200 | A-7720-D20A228A | 22-45-9204 | A-7720-E20A228A | 22-45-9209 | A-7720-F20A228A |
| | A-7720-A21A228A | | A-7720-B21A228A | 22-45-9211 | A-7720-C21A228A | 22-45-9210 | A-7720-D21A228A | 22-45-9214 | A-7720-E21A228A | 22-45-9219 | A-7720-F21A228A |
| | A-7720-A22A228A | | A-7720-B22A228A | 22-45-9221 | A-7720-C22A228A | 22-45-9220 | A-7720-D22A228A | 22-45-9224 | A-7720-E22A228A | 22-45-9229 | A-7720-F22A228A |
| | A-7720-A23A228A | | A-7720-B23A228A | 22-45-9231 | A-7720-C23A228A | 22-45-9230 | A-7720-D23A228A | 22-45-9234 | A-7720-E23A228A | 22-45-9239 | A-7720-F23A228A |
| | A-7720-A24A228A | | A-7720-B24A228A | 22-45-9241 | A-7720-C24A228A | 22-45-9240 | A-7720-D24A228A | 22-45-9244 | A-7720-E24A228A | 22-45-9249 | A-7720-F24A228A |
| | A-7720-A25A228A | | A-7720-B25A228A | 22-45-9251 | A-7720-C25A228A | 22-45-9250 | A-7720-D25A228A | 22-45-9254 | A-7720-E25A228A | 22-45-9259 | A-7720-F25A228A |
| | A-7720-A26A228A | | A-7720-B26A228A | 22-45-9261 | A-7720-C26A228A | 22-45-9260 | A-7720-D26A228A | 22-45-9264 | A-7720-E26A228A | 22-45-9269 | A-7720-F26A228A |
| | A-7720-A27A228A | | A-7720-B27A228A | 22-45-9271 | A-7720-C27A228A | 22-45-9270 | A-7720-D27A228A | 22-45-9274 | A-7720-E27A228A | 22-45-9279 | A-7720-F27A228A |
| | A-7720-A28A228A | | A-7720-B28A228A | 22-45-9281 | A-7720-C28A228A | 22-45-9280 | A-7720-D28A228A | 22-45-9284 | A-7720-E28A228A | 22-45-9289 | A-7720-F28A228A |

| | | | | | | | | | | | |
|----------------------------|--|--|--|--|--|--|--|--|--|--|--|
| <p>REVISION: BA</p> | | | | | | | | | | | |
|----------------------------|--|--|--|--|--|--|--|--|--|--|--|

| | | | | | | | | | | | |
|-------------------------------|--|--|--|--|---|--|--|--|--|-------------------------------|--|
| <u>REVISION:</u> BA | | <u>ECR/ECN INFORMATION:</u> EC No.: UCP2009-2291 DATE: 4/17/2009 | | | <u>TITLE:</u> KK 100 IDT CONNECTOR ASSEMBLY | | | | | <u>SHEET No.</u> 14 | |
|-------------------------------|--|--|--|--|---|--|--|--|--|-------------------------------|--|

| | | | | | | | | | | | |
|---|--|--|--|--|--|--------------------------------------|--|--|--------------------------------------|--|--|
| <u>DOCUMENT NUMBER:</u> SD-7720-001 | | | <u>CREATED / REVISED BY:</u> MKIPPER | | | <u>CHECKED BY:</u> SSOUSEK | | | <u>APPROVED BY:</u> FSMITH | | |
|---|--|--|--|--|--|--------------------------------------|--|--|--------------------------------------|--|--|

| A-7720-ANH208B | | A-7720-BNH208B | | A-7720-CNH208B | | A-7720-DNH208B | | A-7720-ENH208B | | A-7720-FNH208B | |
|----------------|-----------------|----------------|-----------------|----------------|-----------------|----------------|-----------------|----------------|-----------------|----------------|-----------------|
| HOUSING | 7720-AN | HOUSING | 7720-BN | HOUSING | 7720-CN | HOUSING | 7720-DN | HOUSING | 7720-EN | HOUSING | 7720-FN |
| TERM. NO | 41138-H208 | TERM. NO | 41138-H208 | TERM. NO | 41138-H208 | TERM. NO | 41138-H208 | TERM. NO | 41138-H208 | TERM. NO | 41138-H208 |
| PLATING: | 208 | PLATING: | 208 | PLATING: | 208 | PLATING: | 208 | PLATING: | 208 | PLATING: | 208 |
| COLOR | GREEN | COLOR | GREEN | COLOR | GREEN | COLOR | GREEN | COLOR | GREEN | COLOR | GREEN |
| MATL NO | ENG NO: | MATL NO | ENG NO: | MATL NO | ENG NO: | MATL NO | ENG NO: | MATL NO | ENG NO: | MATL NO | ENG NO: |
| | A-7720-A02H208B | | A-7720-B02H208B | 22-45-5023 | A-7720-C02H208B | | A-7720-D02H208B | | A-7720-E02H208B | 22-45-9028 | A-7720-F02H208B |
| | A-7720-A03H208B | | A-7720-B03H208B | 22-45-5033 | A-7720-C03H208B | | A-7720-D03H208B | | A-7720-E03H208B | 22-45-9038 | A-7720-F03H208B |
| | A-7720-A04H208B | | A-7720-B04H208B | 22-45-5043 | A-7720-C04H208B | | A-7720-D04H208B | | A-7720-E04H208B | 22-45-9048 | A-7720-F04H208B |
| | A-7720-A05H208B | | A-7720-B05H208B | 22-45-5053 | A-7720-C05H208B | | A-7720-D05H208B | | A-7720-E05H208B | 22-45-9058 | A-7720-F05H208B |
| | A-7720-A06H208B | | A-7720-B06H208B | 22-45-5063 | A-7720-C06H208B | | A-7720-D06H208B | | A-7720-E06H208B | 22-45-9068 | A-7720-F06H208B |
| | A-7720-A07H208B | | A-7720-B07H208B | 22-45-5073 | A-7720-C07H208B | | A-7720-D07H208B | | A-7720-E07H208B | 22-45-9078 | A-7720-F07H208B |
| | A-7720-A08H208B | | A-7720-B08H208B | 22-45-5083 | A-7720-C08H208B | | A-7720-D08H208B | | A-7720-E08H208B | 22-45-9088 | A-7720-F08H208B |
| | A-7720-A09H208B | | A-7720-B09H208B | 22-45-5093 | A-7720-C09H208B | | A-7720-D09H208B | | A-7720-E09H208B | 22-45-9098 | A-7720-F09H208B |
| | A-7720-A10H208B | | A-7720-B10H208B | 22-45-5103 | A-7720-C10H208B | | A-7720-D10H208B | | A-7720-E10H208B | 22-45-9108 | A-7720-F10H208B |
| | A-7720-A11H208B | | A-7720-B11H208B | 22-45-5113 | A-7720-C11H208B | | A-7720-D11H208B | | A-7720-E11H208B | 22-45-9118 | A-7720-F11H208B |
| | A-7720-A12H208B | | A-7720-B12H208B | 22-45-5123 | A-7720-C12H208B | | A-7720-D12H208B | | A-7720-E12H208B | 22-45-9128 | A-7720-F12H208B |
| | A-7720-A13H208B | | A-7720-B13H208B | 22-45-5133 | A-7720-C13H208B | | A-7720-D13H208B | | A-7720-E13H208B | 22-45-9138 | A-7720-F13H208B |
| | A-7720-A14H208B | | A-7720-B14H208B | 22-45-5143 | A-7720-C14H208B | | A-7720-D14H208B | | A-7720-E14H208B | 22-45-9148 | A-7720-F14H208B |
| | A-7720-A15H208B | | A-7720-B15H208B | 22-45-5153 | A-7720-C15H208B | | A-7720-D15H208B | | A-7720-E15H208B | 22-45-9158 | A-7720-F15H208B |
| | A-7720-A16H208B | | A-7720-B16H208B | 22-45-5163 | A-7720-C16H208B | | A-7720-D16H208B | | A-7720-E16H208B | 22-45-9168 | A-7720-F16H208B |
| | A-7720-A17H208B | | A-7720-B17H208B | 22-45-5173 | A-7720-C17H208B | | A-7720-D17H208B | | A-7720-E17H208B | 22-45-9178 | A-7720-F17H208B |
| | A-7720-A18H208B | | A-7720-B18H208B | 22-45-5183 | A-7720-C18H208B | | A-7720-D18H208B | | A-7720-E18H208B | 22-45-9188 | A-7720-F18H208B |
| | A-7720-A19H208B | | A-7720-B19H208B | 22-45-5193 | A-7720-C19H208B | | A-7720-D19H208B | | A-7720-E19H208B | 22-45-9198 | A-7720-F19H208B |
| | A-7720-A20H208B | | A-7720-B20H208B | 22-45-5203 | A-7720-C20H208B | | A-7720-D20H208B | | A-7720-E20H208B | 22-45-9208 | A-7720-F20H208B |
| | A-7720-A21H208B | | A-7720-B21H208B | 22-45-5213 | A-7720-C21H208B | | A-7720-D21H208B | | A-7720-E21H208B | 22-45-9218 | A-7720-F21H208B |
| | A-7720-A22H208B | | A-7720-B22H208B | 22-45-5223 | A-7720-C22H208B | | A-7720-D22H208B | | A-7720-E22H208B | 22-45-9228 | A-7720-F22H208B |
| | A-7720-A23H208B | | A-7720-B23H208B | 22-45-5233 | A-7720-C23H208B | | A-7720-D23H208B | | A-7720-E23H208B | 22-45-9238 | A-7720-F23H208B |
| | A-7720-A24H208B | | A-7720-B24H208B | 22-45-5243 | A-7720-C24H208B | | A-7720-D24H208B | | A-7720-E24H208B | 22-45-9248 | A-7720-F24H208B |
| | A-7720-A25H208B | | A-7720-B25H208B | 22-45-5253 | A-7720-C25H208B | | A-7720-D25H208B | | A-7720-E25H208B | 22-45-9258 | A-7720-F25H208B |
| | A-7720-A26H208B | | A-7720-B26H208B | 22-45-5263 | A-7720-C26H208B | | A-7720-D26H208B | | A-7720-E26H208B | 22-45-9268 | A-7720-F26H208B |
| | A-7720-A27H208B | | A-7720-B27H208B | 22-45-5273 | A-7720-C27H208B | | A-7720-D27H208B | | A-7720-E27H208B | 22-45-9278 | A-7720-F27H208B |
| | A-7720-A28H208B | | A-7720-B28H208B | 22-45-5283 | A-7720-C28H208B | | A-7720-D28H208B | | A-7720-E28H208B | 22-45-9288 | A-7720-F28H208B |

| | | | | | | | | | | | |
|----------------------------|--|--|--|--|--|--|--|--|--|--|--|
| <p>REVISION: BA</p> | | | | | | | | | | | |
|----------------------------|--|--|--|--|--|--|--|--|--|--|--|

| | | | | | | | | | | | |
|--|--|--|--|--|--|--|--|--|--|--|--|
| <u>ECR/ECN INFORMATION:</u> EC No.: UCP2009-2291 DATE: 4/17/2009 | | <u>TITLE:</u> <p style="text-align: center;">KK 100 IDT CONNECTOR ASSEMBLY</p> | | | | | | | <u>SHEET No.</u> <p style="text-align: center;">15</p> | | |
|--|--|--|--|--|--|--|--|--|--|--|--|

| | | | | | | | | | | | |
|--|--|--|---|--|--|---|--|--|---|--|--|
| <u>DOCUMENT NUMBER:</u> <p style="text-align: center;">SD-7720-001</p> | | | <u>CREATED / REVISED BY:</u> <p style="text-align: center;">MKIPPER</p> | | | <u>CHECKED BY:</u> <p style="text-align: center;">SSOUSEK</p> | | | <u>APPROVED BY:</u> <p style="text-align: center;">FSMITH</p> | | |
|--|--|--|---|--|--|---|--|--|---|--|--|

| A-7720-ANH102B | | A-7720-BNH102B | | A-7720-CNH102B | | A-7720-DNH102B | | A-7720-ENH102B | | A-7720-FNH102B | |
|----------------|-----------------|----------------|-----------------|----------------|-----------------|----------------|-----------------|----------------|-----------------|----------------|-----------------|
| HOUSING | 7720-AN | HOUSING | 7720-BN | HOUSING | 7720-CN | HOUSING | 7720-DN | HOUSING | 7720-EN | HOUSING | 7720-FN |
| TERM. NO | 41138-H102 | TERM. NO | 41138-H102 | TERM. NO | 41138-H102 | TERM. NO | 41138-H102 | TERM. NO | 41138-H102 | TERM. NO | 41138-H102 |
| PLATING: | 102 | PLATING: | 102 | PLATING: | 102 | PLATING: | 102 | PLATING: | 102 | PLATING: | 102 |
| COLOR | GREEN | COLOR | GREEN | COLOR | GREEN | COLOR | GREEN | COLOR | GREEN | COLOR | GREEN |
| MATL NO | ENG NO: | MATL NO | ENG NO: | MATL NO | ENG NO: | MATL NO | ENG NO: | MATL NO | ENG NO: | MATL NO | ENG NO: |
| | A-7720-A02H102B | | A-7720-B02H102B | | A-7720-C02H102B | | A-7720-D02H102B | | A-7720-E02H102B | | A-7720-F02H102B |
| | A-7720-A03H102B | | A-7720-B03H102B | | A-7720-C03H102B | | A-7720-D03H102B | | A-7720-E03H102B | | A-7720-F03H102B |
| | A-7720-A04H102B | | A-7720-B04H102B | | A-7720-C04H102B | | A-7720-D04H102B | | A-7720-E04H102B | | A-7720-F04H102B |
| | A-7720-A05H102B | | A-7720-B05H102B | | A-7720-C05H102B | | A-7720-D05H102B | | A-7720-E05H102B | | A-7720-F05H102B |
| | A-7720-A06H102B | | A-7720-B06H102B | | A-7720-C06H102B | | A-7720-D06H102B | | A-7720-E06H102B | | A-7720-F06H102B |
| | A-7720-A07H102B | | A-7720-B07H102B | | A-7720-C07H102B | | A-7720-D07H102B | | A-7720-E07H102B | | A-7720-F07H102B |
| | A-7720-A08H102B | | A-7720-B08H102B | | A-7720-C08H102B | | A-7720-D08H102B | | A-7720-E08H102B | | A-7720-F08H102B |
| | A-7720-A09H102B | | A-7720-B09H102B | | A-7720-C09H102B | | A-7720-D09H102B | | A-7720-E09H102B | | A-7720-F09H102B |
| | A-7720-A10H102B | | A-7720-B10H102B | | A-7720-C10H102B | | A-7720-D10H102B | | A-7720-E10H102B | | A-7720-F10H102B |
| | A-7720-A11H102B | | A-7720-B11H102B | | A-7720-C11H102B | | A-7720-D11H102B | | A-7720-E11H102B | | A-7720-F11H102B |
| | A-7720-A12H102B | | A-7720-B12H102B | | A-7720-C12H102B | | A-7720-D12H102B | | A-7720-E12H102B | | A-7720-F12H102B |
| | A-7720-A13H102B | | A-7720-B13H102B | | A-7720-C13H102B | | A-7720-D13H102B | | A-7720-E13H102B | | A-7720-F13H102B |
| | A-7720-A14H102B | | A-7720-B14H102B | | A-7720-C14H102B | | A-7720-D14H102B | | A-7720-E14H102B | | A-7720-F14H102B |
| | A-7720-A15H102B | | A-7720-B15H102B | | A-7720-C15H102B | | A-7720-D15H102B | | A-7720-E15H102B | | A-7720-F15H102B |
| | A-7720-A16H102B | | A-7720-B16H102B | | A-7720-C16H102B | | A-7720-D16H102B | | A-7720-E16H102B | | A-7720-F16H102B |
| | A-7720-A17H102B | | A-7720-B17H102B | | A-7720-C17H102B | | A-7720-D17H102B | | A-7720-E17H102B | | A-7720-F17H102B |
| | A-7720-A18H102B | | A-7720-B18H102B | | A-7720-C18H102B | | A-7720-D18H102B | | A-7720-E18H102B | | A-7720-F18H102B |
| | A-7720-A19H102B | | A-7720-B19H102B | | A-7720-C19H102B | | A-7720-D19H102B | | A-7720-E19H102B | | A-7720-F19H102B |
| | A-7720-A20H102B | | A-7720-B20H102B | | A-7720-C20H102B | | A-7720-D20H102B | | A-7720-E20H102B | | A-7720-F20H102B |
| | A-7720-A21H102B | | A-7720-B21H102B | | A-7720-C21H102B | | A-7720-D21H102B | | A-7720-E21H102B | | A-7720-F21H102B |
| | A-7720-A22H102B | | A-7720-B22H102B | | A-7720-C22H102B | | A-7720-D22H102B | | A-7720-E22H102B | | A-7720-F22H102B |
| | A-7720-A23H102B | | A-7720-B23H102B | | A-7720-C23H102B | | A-7720-D23H102B | | A-7720-E23H102B | | A-7720-F23H102B |
| | A-7720-A24H102B | | A-7720-B24H102B | | A-7720-C24H102B | | A-7720-D24H102B | | A-7720-E24H102B | | A-7720-F24H102B |
| | A-7720-A25H102B | | A-7720-B25H102B | | A-7720-C25H102B | | A-7720-D25H102B | | A-7720-E25H102B | | A-7720-F25H102B |
| | A-7720-A26H102B | | A-7720-B26H102B | | A-7720-C26H102B | | A-7720-D26H102B | | A-7720-E26H102B | | A-7720-F26H102B |
| | A-7720-A27H102B | | A-7720-B27H102B | | A-7720-C27H102B | | A-7720-D27H102B | | A-7720-E27H102B | | A-7720-F27H102B |
| | A-7720-A28H102B | | A-7720-B28H102B | | A-7720-C28H102B | | A-7720-D28H102B | | A-7720-E28H102B | | A-7720-F28H102B |

| | | | | | | | | | | | |
|--|--|--|--|--|--|--|--|--|--|--|--|
| | | | | | | | | | | | |
|--|--|--|--|--|--|--|--|--|--|--|--|

| | | | |
|-------------------------------|---|---|-------------------------------|
| <u>REVISION:</u> BA | <u>ECR/ECN INFORMATION:</u> EC No.: UCP2009-2291 <u>DATE:</u> 4/17/2009 | <u>TITLE:</u> KK 100 IDT CONNECTOR ASSEMBLY | <u>SHEET No.</u> 16 |
|-------------------------------|---|---|-------------------------------|

| | | | |
|---|--|--------------------------------------|--------------------------------------|
| <u>DOCUMENT NUMBER:</u> SD-7720-001 | <u>CREATED / REVISED BY:</u> MKIPPER | <u>CHECKED BY:</u> SSOUSEK | <u>APPROVED BY:</u> FSMITH |
|---|--|--------------------------------------|--------------------------------------|

| | | | | | | | | | | | |
|-----------------|------------------|----------|---------|----------|---------|----------|---------|----------|---------|----------|---------|
| A-7720-WENF503B | | | | | | | | | | | |
| HOUSING | 7720-WEN | HOUSING | | HOUSING | | HOUSING | | HOUSING | | HOUSING | |
| TERM. NO | 41138-F503 | TERM. NO | | TERM. NO | | TERM. NO | | TERM. NO | | TERM. NO | |
| PLATING: | 503 | PLATING: | | PLATING: | | PLATING: | | PLATING: | | PLATING: | |
| COLOR | BLACK | COLOR | | COLOR | | COLOR | | COLOR | | COLOR | |
| MATL NO | ENG NO: | MATL NO | ENG NO: | MATL NO | ENG NO: | MATL NO | ENG NO: | MATL NO | ENG NO: | MATL NO | ENG NO: |
| | | | | | | | | | | | |
| | | | | | | | | | | | |
| | | | | | | | | | | | |
| | | | | | | | | | | | |
| | | | | | | | | | | | |
| | | | | | | | | | | | |
| | | | | | | | | | | | |
| | | | | | | | | | | | |
| | | | | | | | | | | | |
| | | | | | | | | | | | |
| | | | | | | | | | | | |
| | | | | | | | | | | | |
| | | | | | | | | | | | |
| | | | | | | | | | | | |
| | | | | | | | | | | | |
| | | | | | | | | | | | |
| | | | | | | | | | | | |
| | | | | | | | | | | | |
| | | | | | | | | | | | |
| 50-36-1714 | A-7720-WE08F503B | | | | | | | | | | |
| | | | | | | | | | | | |
| | | | | | | | | | | | |
| | | | | | | | | | | | |
| | | | | | | | | | | | |
| | | | | | | | | | | | |
| | | | | | | | | | | | |
| | | | | | | | | | | | |
| | | | | | | | | | | | |
| | | | | | | | | | | | |
| | | | | | | | | | | | |
| | | | | | | | | | | | |
| | | | | | | | | | | | |

| | | | | | | | |
|--------------------|---|--------------------------------------|----------------|--|---------------|--|-----------|
| REVISION: | ECR/ECN INFORMATION: | TITLE: | | | | | SHEET No. |
| BA | EC No.: UCP2009-2291 DATE: 4/17/2009 | KK 100 IDT CONNECTOR ASSEMBLY | | | | | 17 |
| DOCUMENT NUMBER: | | CREATED / REVISED BY: | CHECKED BY: | | APPROVED BY: | | |
| SD-7720-001 | | MKIPPER | SSOUSEK | | FSMITH | | |

| MATL NO | ENG NO: | HOUSING | TERM. NO | COLOR | PLATING: | MOLDED VOID | TERMINAL VOID | |
|-----------|-----------------------|--------------|---------------|-------|----------|-------------|---------------|--|
| 022421243 | A-7720-D24HP909C-13A | 7720-D24-13 | 41512-H(P909) | GREEN | P909 | 13 | 13 | |
| 022421213 | A-7720-D21HP909C-19A | 7720-D21-19 | 41512-H(P909) | GREEN | P909 | 19 | 19 | |
| 022421223 | A-7720-D22HP909C-19A | 7720-D22-19 | 41512-H(P909) | GREEN | P909 | 19 | 19 | |
| 022421155 | A-7720-D15HP909C-5A | 7720-D15-5 | 41512-H(P909) | GREEN | P909 | 5 | 5 | |
| 022421156 | A-7720-E15HP909B-2B | 7720-E15-2 | 41138-H(P909) | GREEN | P909 | 2 | NONE | |
| 022421104 | A-7720-E10HP909B-9B | 7720-E10-9 | 41138-H(P909) | GREEN | P909 | 9 | NONE | |
| 022421124 | A-7720-E12HP909B-9B | 7720-E12-9 | 41138-H(P909) | GREEN | P909 | 9 | NONE | |
| 022421144 | A-7720-F14HP909B-51B | 7720-F14-51 | 41138-H(P909) | GREEN | P909 | 2,3,5,6 | NONE | |
| 022421233 | A-7720-F23HP909B-2B | 7720-F23-2 | 41138-H(P909) | GREEN | P909 | 2 | NONE | |
| 022421183 | A-7720-F18HP909B-2B | 7720-F18-2 | 41138-H(P909) | GREEN | P909 | 2 | NONE | |
| 022421135 | A-7720-F13HP909B-2B | 7720-F13-2 | 41138-H(P909) | GREEN | P909 | 2 | NONE | |
| 022421175 | A-7720-F17HP909B-51A | 7720-F17-51 | 41138-H(P909) | GREEN | P909 | 1,17 | 1,17 | |
| 050290032 | A-7720-E17HP909B-51A | 7720-E17-51 | 41138-H(P909) | GREEN | P909 | 1,17 | 1,17 | |
| 050291609 | A-7720-E21HP909B-51A | 7720-E21-51 | 41138-H(P909) | GREEN | P909 | 1,21 | NONE | |
| 050291615 | A-7720-E19HP909B-51A | 7720-E19-51 | 41138-H(P909) | GREEN | P909 | 1, 19 | 1, 19 | |
| 050348528 | A-7720-F03A102A-2A | 7720-F03-2 | 7691-A(102) | BROWN | 102 | 2 | 2 | |
| 050348532 | A-7720-F04A102A-51A | 7720-F04-51 | 7691-A(102) | BROWN | 102 | 2,3 | 2,3 | |
| 050362456 | A-7720-WC05FP909B-51A | 7720-WC05-51 | 41188-F(P909) | BLACK | P909 | 2,4 | 2,4 | |



| | | | |
|--|---|--|-------------------------------|
| REVISION: BA | ECR/ECN INFORMATION: EC No.: UCP2009-2291 DATE: 4/17/2009 | TITLE: KK 100 IDT CONNECTOR ASSEMBLY | SHEET No. 18 |
| DOCUMENT NUMBER: SD-7720-001 | CREATED / REVISED BY: MKIPPER | CHECKED BY: SSOUSEK | APPROVED BY: FSMITH |