

**PLEASE CHECK WWW.MOLEX.COM FOR LATEST PART INFORMATION**

**Part Number:** [0010021102](#)  
**Status:** **Active**  
**Overview:** [kk](#)  
**Description:** 5.08mm (.200") Pitch KK® PC Board Connector, Bottom Entry Mount Style B, 1.0µm (40µ") Tin (Sn), 10 Circuits

**Documents:**

[3D Model](#) [Product Specification PS-99020-0087 \(PDF\)](#)  
[Drawing \(PDF\)](#) [RoHS Certificate of Compliance \(PDF\)](#)

**Agency Certification**

CSA LR19980  
 UL E29179

**General**

Product Family PCB Receptacles  
 Series [3002](#)  
 Application Board-to-Board  
 Overview [kk](#)  
 Product Name KK®

**Physical**

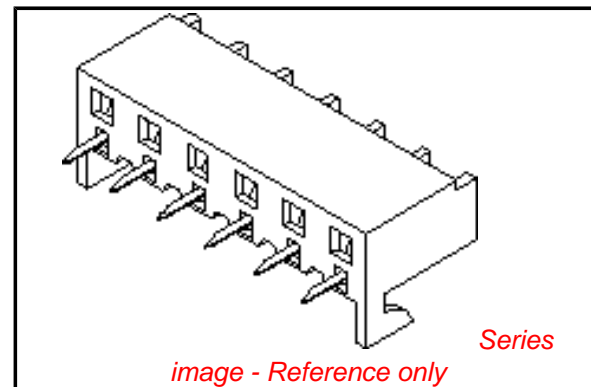
Circuits (Loaded) 10  
 Color - Resin Natural  
 Durability (mating cycles max) 25  
 Flammability 94V-2  
 Glow-Wire Compliant No  
 Material - Metal Phosphor Bronze  
 Material - Plating Mating Tin  
 Material - Plating Termination Tin  
 Material - Resin Nylon  
 Number of Rows 1  
 Orientation Bottom Entry  
 PC Tail Length (in) 0.160 In  
 PC Tail Length (mm) 4.10 mm  
 PCB Locator No  
 PCB Retention None  
 PCB Thickness Recommended (in) 0.062 In  
 PCB Thickness Recommended (mm) 1.60 mm  
 Packaging Type Tray  
 Pitch - Mating Interface (in) 0.200 In  
 Pitch - Mating Interface (mm) 5.08 mm  
 Plating min: Mating (µin) 40.00  
 Plating min: Mating (µm) 1.000  
 Plating min: Termination (µin) 40.00  
 Plating min: Termination (µm) 1.00  
 Polarized to PCB No  
 Temperature Range - Operating 0°C to +75°C  
 Termination Interface: Style Through Hole

**Electrical**

Current - Maximum per Contact 7A  
 Voltage - Maximum 250V

**Solder Process Data**

Duration at Max. Process Temperature (seconds) 5  
 Lead-free Process Capability Wave Capable (TH only)



**EU RoHS**

**ELV and RoHS Compliant**  
**REACH SVHC**  
 Not Reviewed  
**Halogen-Free Status**  
**Not Reviewed**

**China RoHS**



**Need more information on product environmental compliance?**

Email [productcompliance@molex.com](mailto:productcompliance@molex.com)  
 For a multiple part number RoHS Certificate of Compliance, [click here](#)

Please visit the [Contact Us](#) section for any non-product compliance questions.

**Search Parts in this Series**

[3002Series](#)

**Mates With**

[3003](#) , [2599](#) , [3008](#)

|   |     |
|---|-----|
| Max. Cycles at Max. Process Temperature | 1   |
| Process Temperature max. C              | 260 |

**Material Info**

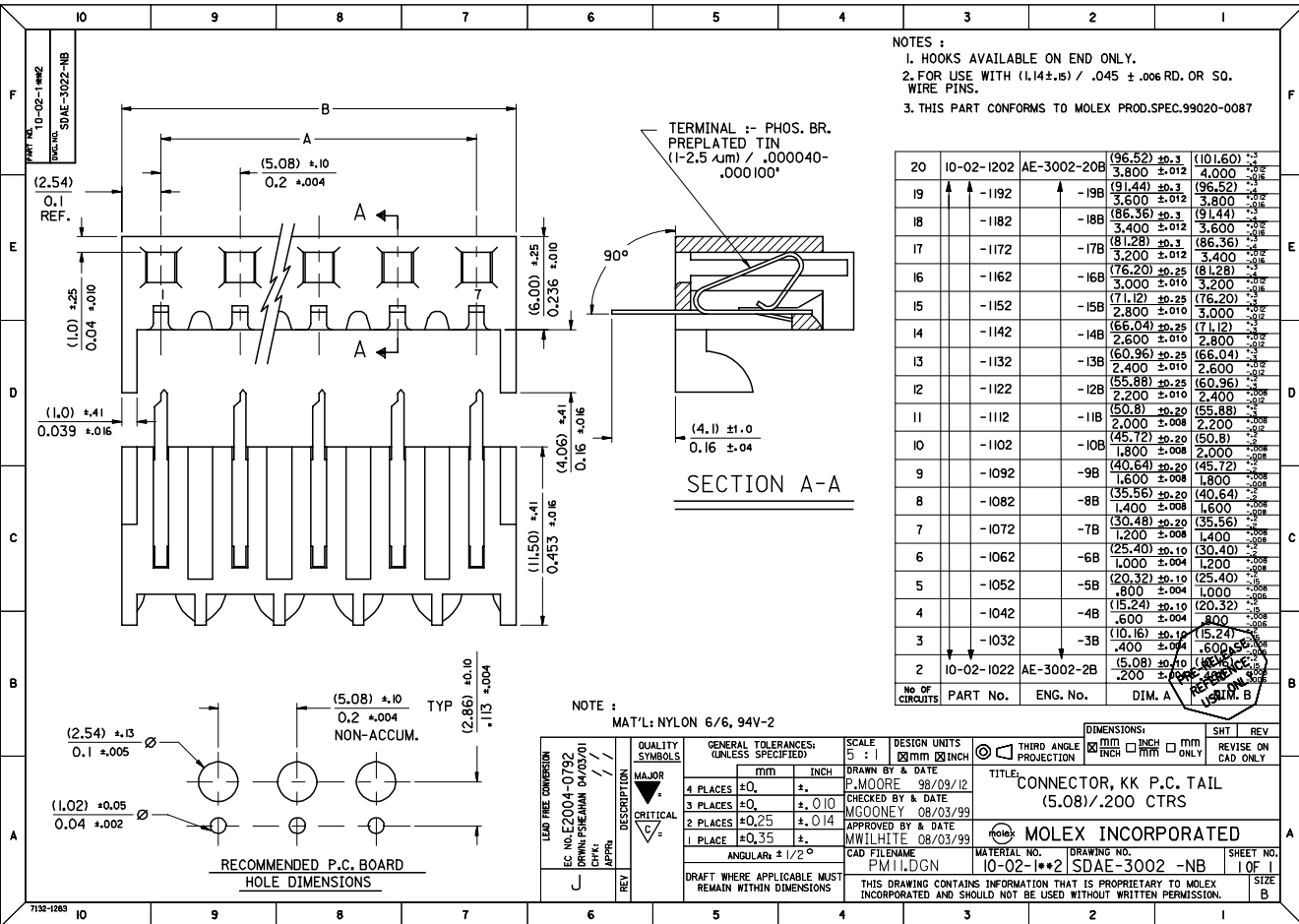
|                 |         |
|-----------------|---------|
| Old Part Number | 300210B |
|-----------------|---------|

**Reference - Drawing Numbers**

|                       |               |
|-----------------------|---------------|
| Product Specification | PS-99020-0087 |
| Sales Drawing         | SDAE-3002-NB  |

This document was generated on 05/21/2010

**PLEASE CHECK [WWW.MOLEX.COM](http://WWW.MOLEX.COM) FOR LATEST PART INFORMATION**



**NOTES :**  
 1. HOOKS AVAILABLE ON END ONLY.  
 2. FOR USE WITH (1.14±.05) / .045 ± .006 RD. OR SQ. WIRE PINS.  
 3. THIS PART CONFORMS TO MOLEX PROD.SPEC.99020-0087

| No. OF CIRCUITS | PART No.   | ENG. No.    | DIM. A        | DIM. B        |
|-----------------|------------|-------------|---------------|---------------|
| 20              | 10-02-1202 | AE-3002-20B | (96.52) ±0.3  | (101.60) ±0.3 |
|                 |            |             | 3.800 ±0.012  | 4.000 ±0.012  |
| 19              | -1192      | -19B        | (91.44) ±0.3  | (96.52) ±0.3  |
|                 |            |             | 3.600 ±0.012  | 3.800 ±0.012  |
| 18              | -1182      | -18B        | (86.36) ±0.3  | (91.44) ±0.3  |
|                 |            |             | 3.400 ±0.012  | 3.600 ±0.012  |
| 17              | -1172      | -17B        | (81.28) ±0.3  | (86.36) ±0.3  |
|                 |            |             | 3.200 ±0.012  | 3.400 ±0.012  |
| 16              | -1162      | -16B        | (76.20) ±0.25 | (81.28) ±0.3  |
|                 |            |             | 3.000 ±0.010  | 3.200 ±0.012  |
| 15              | -1152      | -15B        | (71.12) ±0.25 | (76.20) ±0.3  |
|                 |            |             | 2.800 ±0.010  | 3.000 ±0.012  |
| 14              | -1142      | -14B        | (66.04) ±0.25 | (71.12) ±0.3  |
|                 |            |             | 2.600 ±0.010  | 2.800 ±0.012  |
| 13              | -1132      | -13B        | (60.96) ±0.25 | (66.04) ±0.3  |
|                 |            |             | 2.400 ±0.010  | 2.600 ±0.012  |
| 12              | -1122      | -12B        | (55.88) ±0.25 | (60.96) ±0.3  |
|                 |            |             | 2.200 ±0.010  | 2.400 ±0.012  |
| 11              | -1112      | -11B        | (50.8) ±0.20  | (55.88) ±0.3  |
|                 |            |             | 2.000 ±0.008  | 2.200 ±0.012  |
| 10              | -1102      | -10B        | (45.72) ±0.20 | (50.8) ±0.3   |
|                 |            |             | 1.800 ±0.008  | 2.000 ±0.008  |
| 9               | -1092      | -9B         | (40.64) ±0.20 | (45.72) ±0.3  |
|                 |            |             | 1.600 ±0.008  | 1.800 ±0.008  |
| 8               | -1082      | -8B         | (35.56) ±0.20 | (40.64) ±0.3  |
|                 |            |             | 1.400 ±0.008  | 1.600 ±0.008  |
| 7               | -1072      | -7B         | (30.48) ±0.20 | (35.56) ±0.3  |
|                 |            |             | 1.200 ±0.008  | 1.400 ±0.008  |
| 6               | -1062      | -6B         | (25.40) ±0.10 | (30.48) ±0.3  |
|                 |            |             | 1.000 ±0.004  | 1.200 ±0.008  |
| 5               | -1052      | -5B         | (20.32) ±0.10 | (25.40) ±0.3  |
|                 |            |             | .800 ±0.004   | 1.000 ±0.008  |
| 4               | -1042      | -4B         | (15.24) ±0.10 | (20.32) ±0.3  |
|                 |            |             | .600 ±0.004   | .800 ±0.008   |
| 3               | -1032      | -3B         | (10.16) ±0.10 | (15.24) ±0.3  |
|                 |            |             | .400 ±0.004   | .600 ±0.008   |
| 2               | 10-02-1022 | AE-3002-2B  | (5.08) ±0.10  | (5.08) ±0.10  |
|                 |            |             | .200 ±0.004   | .200 ±0.004   |

| SHT. 1 OF 1               |      | MRI-SDAE-3002-NB |       |                |                                 |
|---------------------------|------|------------------|-------|----------------|---------------------------------|
| MODIFICATION RECORD INDEX |      |                  |       |                |                                 |
| ECN                       | ISS. | DATE             | INIT. | SHTS. AFFECTED | DESCRIPTION OF MOD.             |
| E90109                    | F    |                  |       | I              |                                 |
|                           | G    |                  |       | I              |                                 |
| E2003-0992                | H    | 03.03.27         | PS    | I              | NEW PROD.SPEC. 99020-0087 ADDED |

|   |  |                           |       |  |  |
|---|--|---------------------------|-------|--|--|
| MOLEX EUROPE  |  | REVISE ONLY ON CAD SYSTEM |       |  |  |
| THIS DRAWING CONTAINS INFORMATION THAT IS PROPRIETARY TO MOLEX INC. & SHOULD NOT BE USED WITHOUT WRITTEN PERMISSION |  | CAD/CAM FILENAME          | ISSUE |  |  |
| MF0028  |  | PM11 .DGN                 | H     |  |  |