

AM CERAMIC FILTERS WITH MATCHING COIL
Description

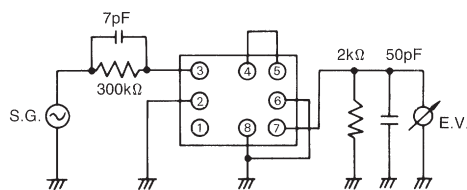
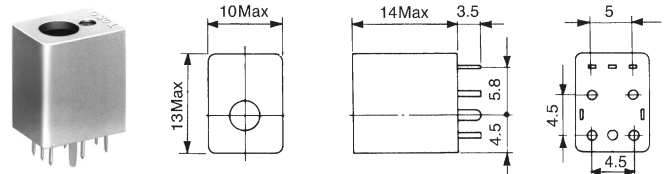
- AM IF filters combining matching coil with CFM2 type in resin case
- Center frequency range: 450 — 470kHz
- Bandwidth at 6dB: 2 — 11kHz

Features

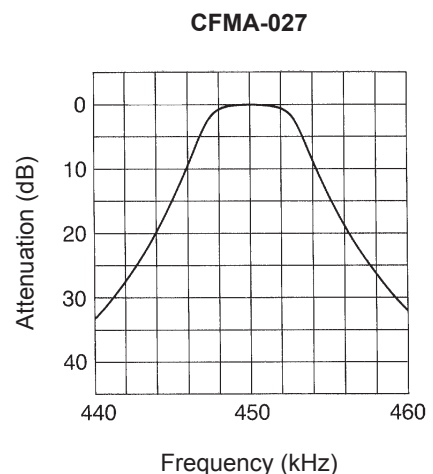
- Can be preset if required
- High selectivity, suited to a wide range of applications
- Low temperature coefficient
- Low spurious response
- Lead-free terminations

Applications

- AM radio-cassettes, AM stereo application sets
- Wireless data communication equipment

Test Circuit

Dimensions


Unit: mm

Typical Characteristics
Frequency Response

STANDARD FILTERS SELECTION GUIDE
TYPE CFMA (CERASIZER®/Triple-tuned)

TOKO Part Number	Center Frequency (kHz)	Bandwidth at 6dB (kHz)	Selectivity at $F_o \pm 9\text{kHz}$ (dB)	Ripple in Pass Band (dB)	Input Level for 0.6mV Output (dB)	Note
##CFMA-027	450±1.5	5.0 min.	25.0 min.	1.0 max.	78.5±3.0	
##CFMA-003	455±2.5	5.0 min.	25.0 min.	1.0 max.	78.5±3.0	
##CFMA-050	459±1.5	5.0 min.	25.0 min.	1.0 max.	78.5±3.0	
##CFMA-012	460±2.5	5.0 min.	25.0 min.	1.5 max.	78.5±3.0	
##CFMA-008	468±2.5	5.0 min.	25.0 min.	1.0 max.	78.5±3.0	
##PCFMA-221	450±1.0	9.5 min.	17.0 min.	0.7 max.	87.0±3.0	For AM stereo application



The information furnished by TOKO, Inc. is believed to be accurate and reliable. However, TOKO reserves the right to make changes or improvements in the design, specification or manufacture of its products without further notice. TOKO does not assume any liability arising from the application or use of any product or circuit described herein, nor for any infringements of patents or other rights of third parties which may result from the use of its products. No license is granted by implication or otherwise under any patent or patent rights of TOKO, Inc.