

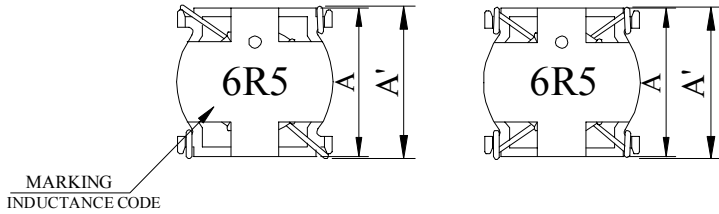
SPECIFICATION FOR APPROVAL

REF : 20070821-A

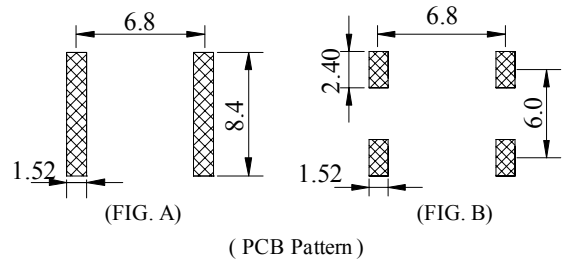
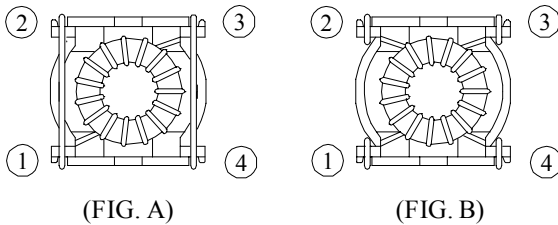
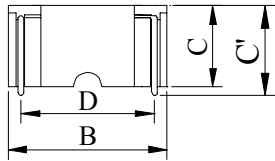
PAGE: 1

PROD. NAME	SMD TOROIDAL POWER FILTER	ABC'S DWG NO.	ST0806□□□□L□-□□□
		ABC'S ITEM NO.	

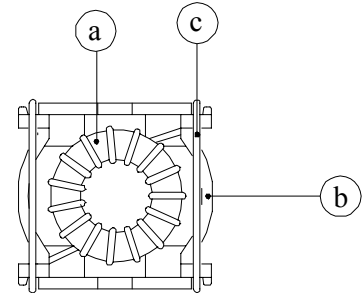
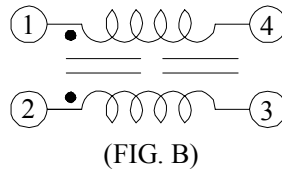
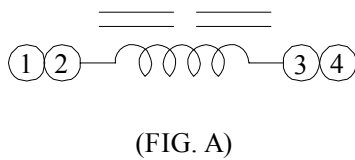
. CONFIGURATION & DIMENSIONS :



- A : 8.40 ± 0.2 m / m
- A' : 8.70 max. m / m
- B : 8.40 ± 0.3 m / m
- C : 6.10 typ. m / m
- C' : 6.70 max. m / m
- D : 6.80 typ. m / m



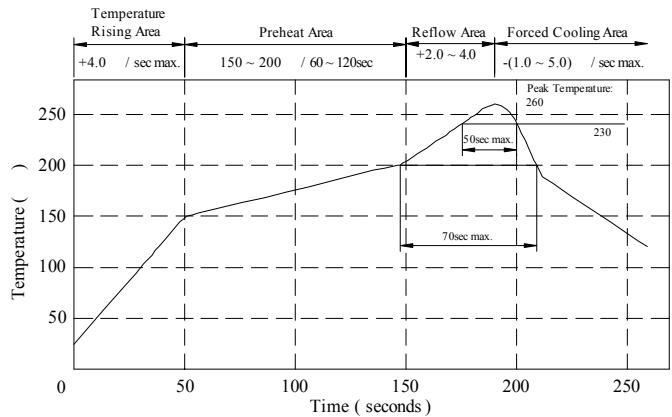
. SCHEMATIC DIAGRAM :



. MATERIALS :

- a . Core : Iron Toroidal Core
- b . Case : PPS-R7
- c . Wire : Enamelled Copper Wire (class F)
- d . Adhesive : Epoxy resin
- e . Remark : Products comply with RoHS' requirements

Peak Temp : 260 max.
 Max time above 230 : 50sec max.
 Max time above 200 : 70sec max.



. GENERAL SPECIFICATION :

- a . Temp. Rise : 40 typ.
- b . Storage Temp. : -40 ----+130
- c . Operating Temp. : -25 ----+130
- d . Resistance To Solder Heat : 260 .10 Secs.

AR-001A

SPECIFICATION FOR APPROVAL

REF : 20070821-A

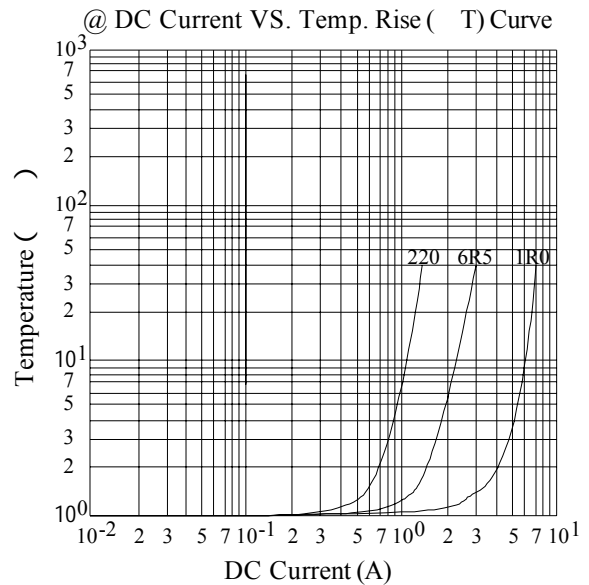
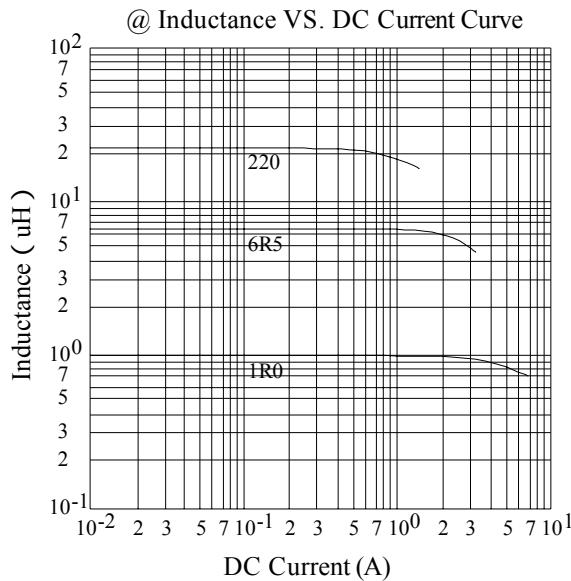
PAGE: 2

PROD. NAME	SMD TOROIDAL POWER FILTER	ABC'S DWG NO.	ST0806□□□□L□-□□□
		ABC'S ITEM NO.	

. ELECTRICAL CHARACTERISTICS :

DWG No.	Inductance @10KHz, 0.1 Vrms (μH)	RDC(mΩ) (Each Winding)		Irms(A) typ.	Isat(A) typ.	FIG.
		max.	typ.			
ST08061R0ML□-□□□	1.0 ± 20%	17.0	13.0	6.70	7.50	B
ST08066R5ML□-□□□	6.5 ± 20%	35.0	28.1	3.20	2.90	A
ST0806220ML□-□□□	22.0 ± 20%	142.0	110.0	1.40	1.50	A

- 1). □ : Packaging information ... [A]: Bulk [B]: Taping Reel
- 2). "- □□□":Reference code
- 3). Irms base on Temp. rise 40 typ.
- 4). Isat base on L/L0A=35% typ.



SPECIFICATION FOR APPROVAL

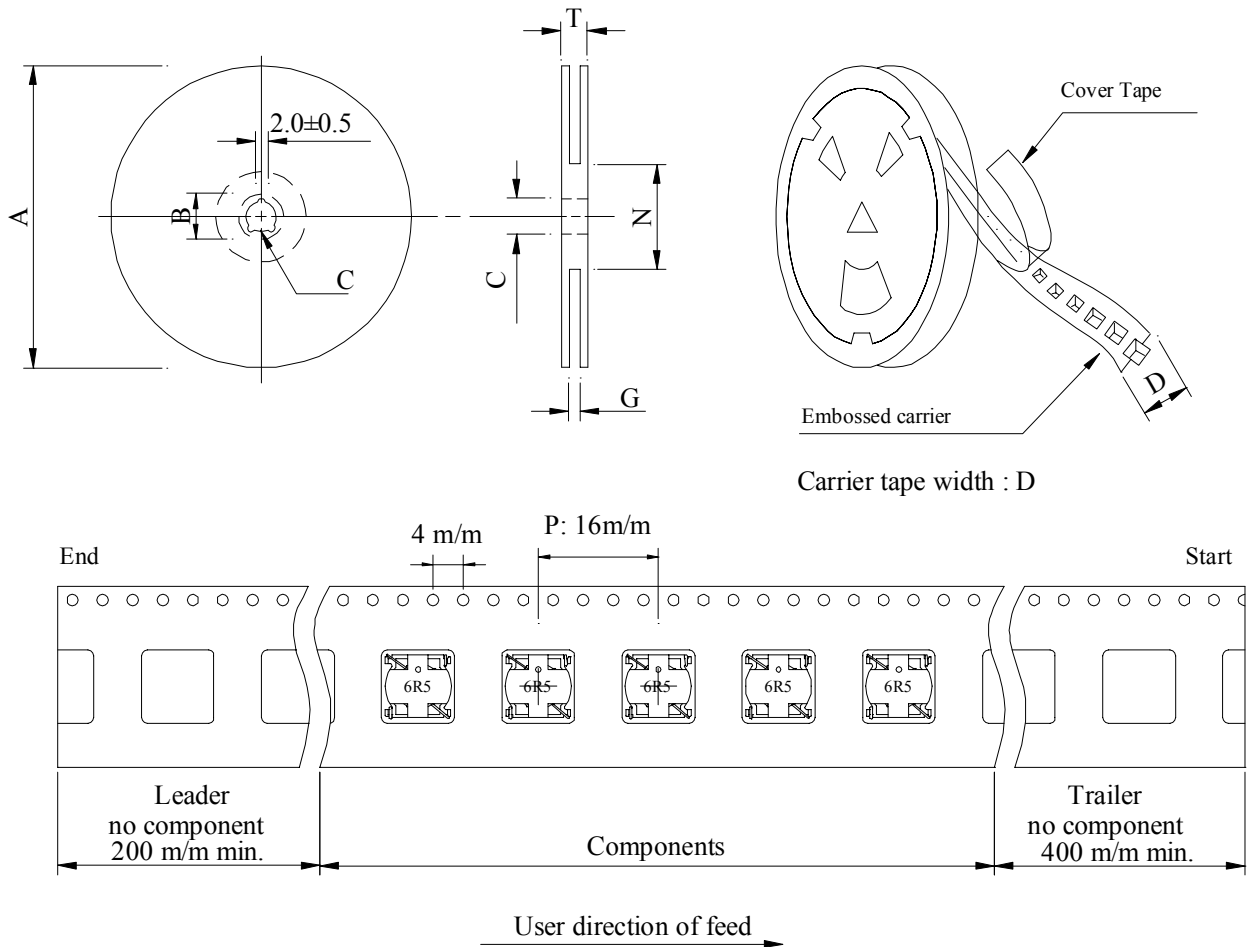
REF : 20070821-A

PAGE: 3

PROD. NAME	SMD TOROIDAL POWER FILTER	ABC'S DWG NO.	ST0806□□□□L□-□□□
		ABC'S ITEM NO.	

PACKAGING INFORMATION :

(1) Configuration



(2) Dimensions : (m/m)

Style	A	B	C	D	G	N	T
13 - 24	330	21±0.8	13±0.5	24	26 ⁺⁰	50 ⁻⁰	30.4

(3) Q'TY & G.W. Per package :

Type	Inner : Reel			Outer : Carton		
	Q'TY (pcs)	G.W. (gw)	Style	Q'TY (pcs)	G.W. (kg)	Size (cm)
ST0806	500	800	13 - 24	2000	5.0	40 x 40 x 24

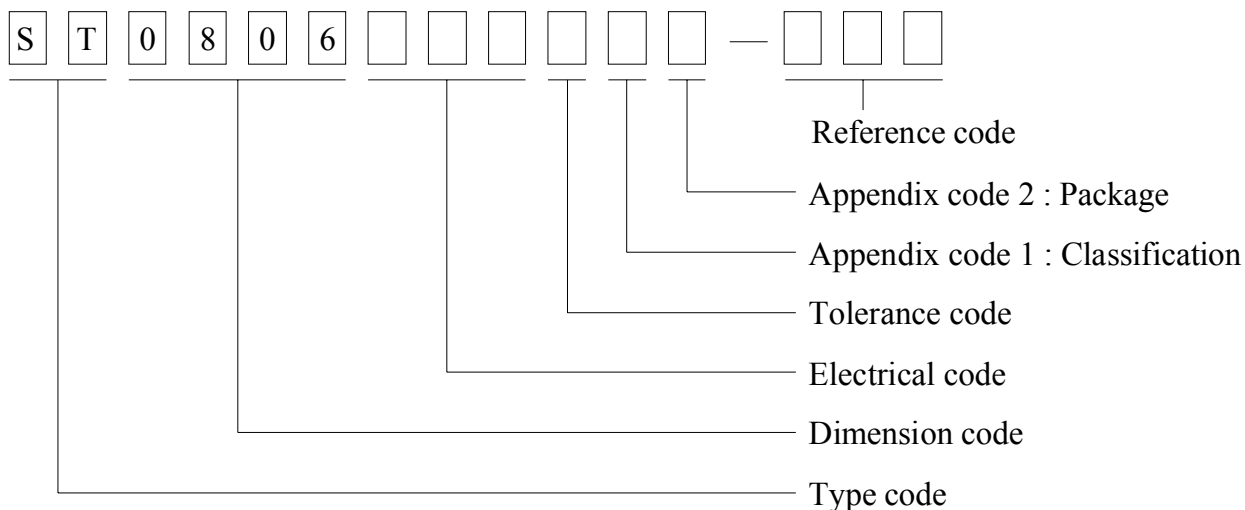
SPECIFICATION FOR APPROVAL

REF : 20070821-A

PAGE: 4

PROD. NAME	SMD POWER INDUCTOR	ABC'S DWG NO.	ST0806□□□□L□-□□□
		ABC'S ITEM NO.	

. DWGING NUMBER EXPRESSION :



Appendix code 1 : Product Classification

- L : Lead Free Standard products comply with RoHS' requirements
- 1 ~ 9 : Lead Free Special products comply with RoHS' requirements

Appendix code 2 : Package Information

Code	Inner Package	Inner Package Q'TY	Remark
A	T.B.D.	T.B.D.	
B	T / R (Reel Package)	500 pcs	

SPECIFICATION FOR APPROVAL

REF : 20070821-A

PAGE: 5

PROD. NAME	SMD TOROIDAL POWER FILTER	ABC'S DWG NO.	ST0806□□□□L□-□□□
		ABC'S ITEM NO.	

. RELIABILITY TEST :

Test item	Specification	Test condition						
Solderability	More than 95% of the terminal electrode shall be covered With fresh solder.	Preheat : 155 / 4 hours. Solder : Sn96.5 / Ag3 / Cu0.5 or equivalent Solder temp. : 235±5 Flux : Rosin Dip time : 5±0.5 seconds						
Thermal shock test (Temp. cycle)	Electrical characteristics shall not change more than ±20%	<table style="width: 100%; border: none;"> <tr> <td style="border: none;">Room temp. 15 minutes</td> <td style="border: none; text-align: center;">→</td> <td style="border: none; text-align: center;">-25 30 minutes</td> </tr> <tr> <td style="border: none;">Room temp. 15 minutes</td> <td style="border: none; text-align: center;">→</td> <td style="border: none; text-align: center;">+130 30 minutes</td> </tr> </table> <p>Total : 50 cycles</p>	Room temp. 15 minutes	→	-25 30 minutes	Room temp. 15 minutes	→	+130 30 minutes
Room temp. 15 minutes	→	-25 30 minutes						
Room temp. 15 minutes	→	+130 30 minutes						
Humidity test		Temperature : 40±2 Humidity : 90±5% Time : 1000 hours						
High temp. Resistance test		Temperature : 130±5 Applied current : Per spec. Time : 96 hours						

SPECIFICATION FOR APPROVAL

REF : 20070821-A

PAGE: 6

PROD. NAME	SMD TOROIDAL POWER FILTER	ABC'S DWG NO. ABC'S ITEM NO.	ST0806□□□□L□-□□□
---------------	---------------------------	---------------------------------	------------------

. UL CARD :

OBMW2 September 8, 2000
Magnet Wire-Component

JUNG SHING WIRE CO LTD E174837
231 CHUNG CHENG RD, SEC 3 JEN-TEH HSIANG, TAINAN
HSIEN TAIWAN

Mtl Dsg	Mark Dsg	BC	Coat Typ	OC	ANSI Type	Temp Class
AIW	—	Polyamideimide		—	MW81-C	220
CFUEWB	—	Polyurethane		—	MW75C	130
EIAIW	—	Polyesterimide		Polyamideimide	MW35C	200
EILOCKY	—	Polyesterimide		Polyamide	—	180
EILOCKW	—	Polyesterimide		Modified Epoxy	—	200
EIW	—	Polyesterimide		—	—	220
EIW-2	—	Polyesterimide		—	MW74-C	200
FL.EILOCKY	—	Modified Polyester		Polyamide	—	155
LSFFW	—	Polyurethane		—	MW79-C	155
LSUEW	—	Polyurethane		—	—	130
PEW	—	Polyester		—	—	155
PEY	—	Polyester		Nylon	MW24-C	155
SF.FLW	—	Modified Polyester		—	MW26C	155
SF.EIW	—	Polyesterimide		—	MW77C	180
SF.BY@	—	Modified Polyester		Nylon	MW27-C	155
SF.FLY@	—	Modified Polyester		Nylon	MW27-C	155
SF.BLOCKBS	—	Modified Polyester		Modified Polyamide	—	155
SF.EILOCKY#	—	Polyesterimide		Polyamide	—	180
SF.EILOCKBS	—	Polyesterimide		Modified Polyamide	—	180
SF.BW@	—	Modified Polyester		—	MW26C	155
SFFW	—	Polyurethane		—	MW79	155

287806002 Page 1 of 2

A not-for-profit organization
dedicated to public safety and
committed to quality service

Mtl Dsg	Mark Dsg	BC	Coat Typ	OC	ANSI Type	Temp Class
SFFY	—	Polyurethane		Polyamide	MW80C	155
UEW-1	—	Polyurethane		—	MW2-C	105
UEW-2	—	Polyurethane		—	—	130
UEW-4	—	Polyurethane		—	MW75C	130
UEY	—	Polyurethane		Nylon	MW28-C	130
UEY-2	—	Polyurethane		Polyamide	MW28-C	130

@-May be suffixed by LZ; # - May be suffixed by LZ, EL or LZI.
LZ - Signifies magned wires twisted together; EL - signifies base coated magnet wire laid parallel with top coat applied overall; LZL - signi-
fies base coated magnet wire twisted together and covered with top coat overall.

Marking: Company name or trademarks JSW or 聚晶電線, material designation or marked designation on packaed or reel, and
Recognized Component Mark.

See General Information Preceding These Recognitions
For use only in equipment where the acceptability of the combination is determined by Underwriters Laboratories Inc.

287806002 Page 2 of 2

OBMW2/E174837
September 8, 2000

SPECIFICATION FOR APPROVAL

REF : 20070821-A

PAGE: 7

PROD. NAME	SMD TOROIDAL POWER FILTER	ABC'S DWG NO.	ST0806□□□□L□-□□□
		ABC'S ITEM NO.	

QMFZ2		Wednesday, January 22, 2003									
Component-Plastics											
CHEVRON PHILLIPS CHEMICAL CO L P		E54700									
Mti Dsg	Col	Min Thk mm	UL94 Flame Class	Elec	RTI Imp	Mech Str	H W I	H A I	H V T R	D 4 5	C T I
Polyphenylene sulfide (PPS), glass reinterced, designated "RYTON", furnished as pellets.											
R-4-230NA	NC	0.38	V-0	130	130	130	—	—	4	5	4
		0.71	V-0	200	200	200	4	1	4	5	4
		1.5	V-0	220	200	220	0	0	4	5	4
		1.8	5VA	220	200	220	—	—	4	5	4
		3.0	V-0, 5VA	220	200	220	0	0	4	5	4
		6.0	V-0, 5VA	220	200	220	0	0	4	5	4
Report : 12/07/1982											
Sunday, August 23, 1998											
Polyphenylene sulfide (PPS), glass reinterced, mineral reinforced, designated "RYTON", furnished as pellets.											
R-7	NC,BK,TN	0.71	V-0	200	200	200	1	0	0	5	3
		1.5	V-0	220	220	220	1	0	0	5	3
		3.0	V-0	220	220	220	1	0	0	5	3
		6.0	V-0	220	220	220	—	—	0	5	3
Report : 08/30/1983											
Underwriters Laboratories Inc. ®										984485002	