

HAMAMATSU

COMPACT BENCH-TOP TYPE REGULATED DC POWER SUPPLY C9525 SERIES

Compact Bench-top Type Multipurpose Power Supply
Simultaneous Outputs of ± 5 V, ± 15 V and High Voltage

OVERVIEW

The C9525 series is a bench-top type multipurpose power supply incorporating a high voltage power supply (maximum output of +2000 V/-2000 V for a photomultiplier tube) and constant voltage power supplies (± 5 V and ± 15 V for peripheral devices such as Hamamatsu amplifier units and photon counting unit). The four digit digital voltmeter on the front panel shows the output value of high voltage with high accuracy.

FEATURES

- Compact bench-top type
- Multiple outputs of ± 5 V, ± 15 V and high voltage (+2000 V, -2000 V)
- High stability
- USB control



SPECIFICATIONS

Parameter		High Voltage Power Supply Section	± 5 V Power Supply Section	± 15 V Power Supply Section
Output Voltage	C9525/C9525-01	0 V to -2000 V (variable)	± 5 V ± 5 % (fixed)	± 15 V ± 5 % (fixed)
	C9525-50/C9525-51	0 V to +2000 V (variable)		
Specification Guaranteed Output Voltage	C9525/C9525-01	-320 V to -2000 V (variable)	± 5 V ± 5 % (fixed)	± 15 V ± 5 % (fixed)
	C9525-50/C9525-51	+320 V to +2000 V (variable)		
Maximum Output Current		2 mA	500 mA	200 mA
AC Input Voltage	C9525/C9525-50	100 V / 120 V (± 10 %) (50 Hz / 60 Hz)		
	C9525-01/C9525-51	230 V (± 10 %) (50 Hz / 60 Hz)		
Input Regulation [Ⓐ]	Max.	± 0.005 %	± 0.1 %	± 0.1 %
Load regulation [Ⓑ]	Max.	± 0.03 %	± 1 %	± 0.5 %
Ripple / noise (p-p) [Ⓒ]	Max.	0.003 %	0.06 %	0.02 %
Drift [Ⓓ]	Max.	± 0.05 %/h	± 0.05 %/h	± 0.05 %/h
Temperature Coefficient	Max.	± 0.01 %/°C	± 0.01 %/°C	± 0.005 %/°C
High Voltage Output Monitoring Accuracy	Max.	$\pm(0.1$ % +2 V)	—	—
Output Connector Receptacle		SHV Type	DIN Type (6 pins)	
Power Consumption [Ⓒ]			Approx. 40 V·A	
Operating Ambient Temperature / Humidity Range [Ⓔ]			0 °C to +40 °C, 85 % RH Max.	
Storage Temperature / Humidity Range [Ⓔ]			-20 °C to +50 °C, 90 % RH Max.	
Weight			Approx. 3.0 kg	

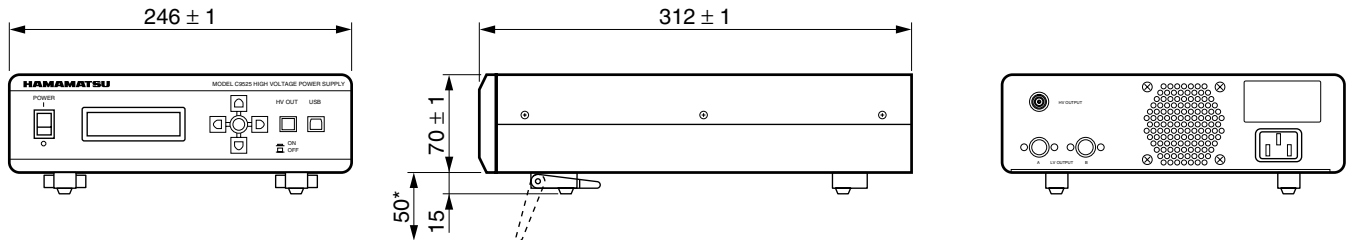
- NOTE:** [Ⓐ]For 10 % change in line voltage
[Ⓑ]For 0 % to 100 % change in load
[Ⓒ]At the maximum output
[Ⓓ]After 30 minute warm-up
[Ⓔ]No condensation

COMPACT BENCH-TOP TYPE REGULATED DC POWER SUPPLY C9525 SERIES

ACCESSORIES

- ① High voltage output cable (1.5 m long) terminated with SHV-P plugs E1168-17 1
- ② AC line cable (2 m long) 1
- ③ 3P/2P connector AC adapter 1
- ④ USB cable (1.5 m long) with filter 1
- ⑤ Low voltage power supply section DIN connector plugs 2
- ⑥ CD-R (Containing instruction manual, sample software) 1

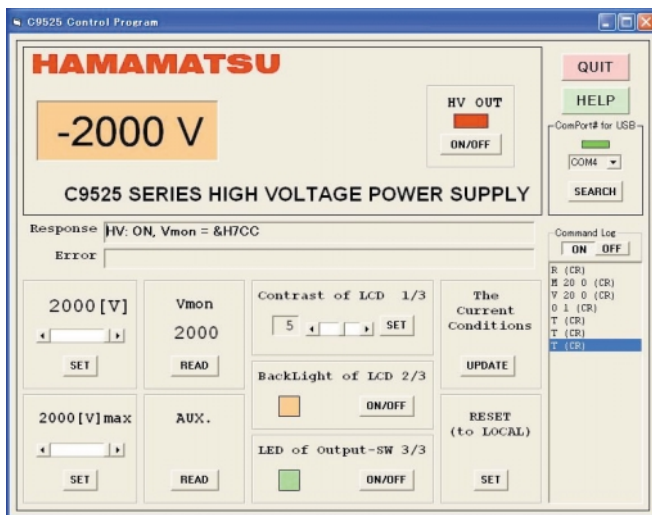
DIMENSIONAL OUTLINES (Unit: mm)



* The height of the C9525 is 120 mm with front legs extended

TACCA0290EA

SAMPLE SOFTWARE SCREEN



At -2000 V Output.

HAMAMATSU

WEB SITE www.hamamatsu.com

HAMAMATSU PHOTONICS K.K., Electron Tube Division

314-5, Shimokanzo, Iwata City, Shizuoka Pref., 438-0193, Japan, Telephone: (81)539/62-5248, Fax: (81)539/62-2205

U.S.A.: Hamamatsu Corporation: 360 Foothill Road, P. O. Box 6910, Bridgewater, N.J. 08807-0910, U.S.A., Telephone: (1)908-231-0960, Fax: (1)908-231-1218 E-mail: usa@hamamatsu.com

Germany: Hamamatsu Photonics Deutschland GmbH: Arzbergerstr. 10, D-82211 Herrsching am Ammersee, Germany, Telephone: (49)8152-375-0, Fax: (49)8152-2658 E-mail: info@hamamatsu.de

France: Hamamatsu Photonics France S.A.R.L.: 19, Rue du Saule Trapu, Parc du Moulin de Massy, 91882 Massy Cedex, France, Telephone: (33)1 69 53 71 00, Fax: (33)1 69 53 71 10 E-mail: infos@hamamatsu.fr

United Kingdom: Hamamatsu Photonics UK Limited: 2 Howard Court, 10 Tewin Road Welwyn Garden City Hertfordshire AL7 1BW, United Kingdom, Telephone: 44-(0)1707-294888, Fax: 44(0)1707-325777 E-mail: info@hamamatsu.co.uk

North Europe: Hamamatsu Photonics Norden AB: Smidesvägen 12, SE-171-41 SOLNA, Sweden, Telephone: (46)8-509-031-00, Fax: (46)8-509-031-01 E-mail: info@hamamatsu.se

Italy: Hamamatsu Photonics Italia: S.R.L.: Strada della Moia, 1/E, 20020 Arese, (Milano), Italy, Telephone: (39)02-935 81 733, Fax: (39)02-935 81 741 E-mail: info@hamamatsu.it

TACCA0290EA
JAN. 2007. IP