

Monolithic crystal filter

MQF120...180.0-1400/C



Application

- 4 pol filter
- antenna filter
- use in mobile and stationary transceivers

Limiting values

| | | Unit | Value |
|-----------------------|--------------------|------|------------------------|
| Center frequency | f_0 | MHz | 120...180.0 |
| Insertion loss | | dB | ≤ 5.0 |
| Pass band at 3.0 dB | | kHz | ± 7.00 |
| Ripple in pass band | $f_0 \pm 5.00$ kHz | dB | ≤ 1.0 |
| Stop band attenuation | $f_0 \pm 30$ kHz | dB | ≥ 20 |
| | $f_0 \pm 60$ kHz | dB | > 45 |
| Alternate attenuation | | dB | > 60 except spurious |
| Spurious responses | | dB | > 15 |

Note: The nominal frequency f_0 is determined by customer

Terminating impedance Z

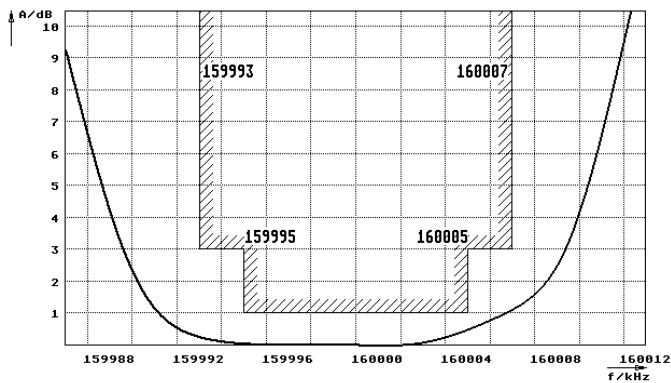
| | | |
|----------|--------|---------|
| R1 C1 | Ohm/pF | 50 0 |
| R2 C2 | Ohm/pF | 50 0 |

Operating temp. range

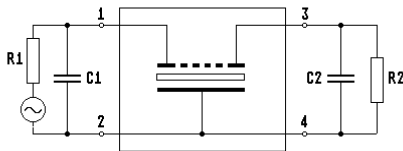
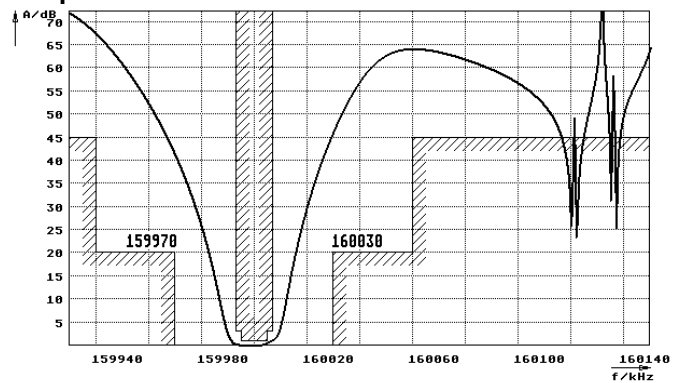
° C -20... +70

Characteristics MQF160.0-1400/C

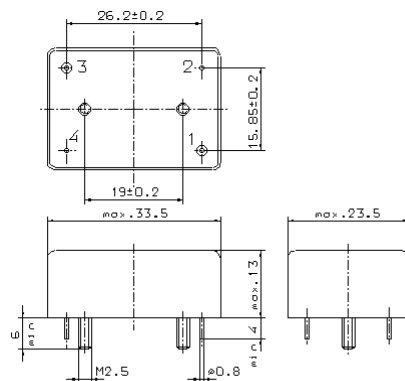
Pass band



Stop band



- Pin connections:
- 1 Input
 - 2 Ground-Input
 - 3 Output
 - 4 Ground-Output



GM 33